



LayerX Integration PowerPack

VOSS Insights Integration PowerPack version 101

Table of Contents



LayerX Integration PowerPack	3
What is the LayerX Integration PowerPack?	3
Available Event Policies	4
VOSS Insights Event Severity to SL1 Event Severity Mapping	4
Installing the LayerX Integration PowerPack	4
Configuring VOSS Insights for SL1 Event Policies	5
Configuring LayerX and SL1 Dashboards	6
Configuring VOSS Insights to Add SL1 Filters to Dashboards	7
Creating Field Groupings in VOSS Insights to Add SL1 Filters to Dashboards	7
Testing the Integration and Gathering Data to Configure SL1 Dashboards and Custom Links	9
Configuring the SL1 Classic Dashboards	10
Configuring Custom Links for LayerX	13
Defining the LayerX Dashboard Links	13
Adding the LayerX Netflow - Top Application Dashboard Custom Link	13
Adding the LayerX Netflow - Top Talkers Dashboard Custom Link	13
Dashboards	14
LayerX Top Applications by Device	14
LayerX Top Applications by Inbound Interface	15
LayerX Top Applications by Outbound Interface	15
LayerX Top Talkers by Device	16
LayerX Top Talkers by Inbound Interface	16
LayerX Top Talkers by Outbound Interface	17

LayerX Integration PowerPack

Overview

This manual describes the event policies found in this PowerPack.

Use the following menu options to navigate the SL1 user interface:

- To view a pop-out list of menu options, click the menu icon ().
- To view a page containing all of the menu options, click the Advanced menu icon ().

This chapter covers the following topics:

<i>What is the LayerX Integration PowerPack?</i>	3
<i>Available Event Policies</i>	4
<i>Installing the LayerX Integration PowerPack</i>	4
<i>Configuring VOSS Insights for SL1 Event Policies</i>	5

NOTE: ScienceLogic provides this documentation for the convenience of ScienceLogic customers. Some of the configuration information contained herein pertains to third-party vendor software that is subject to change without notice to ScienceLogic. ScienceLogic makes every attempt to maintain accurate technical information and cannot be held responsible for defects or changes in third-party vendor software. There is no written or implied guarantee that information contained herein will work for all third-party variants. See the End User License Agreement (EULA) for more information.

What is the LayerX Integration PowerPack?

The LayerX Integration PowerPack contains event policies that:

- Match alerts sent by VOSS Insights to SL1 via the API and generates an event for each VOSS Insights event.

The PowerPack also includes dashboards that integrate with LayerX and displays information about your LayerX devices.

Available Event Policies

The LayerX IntegrationPowerPack includes several pre-defined event policies for VOSS Insights events:

Event Policy Name	Description	Event Source	Severity
LayerX Critical Alert	This event policy matches alerts sent from LayerX with critical severity.	API	Critical
LayerX Major Alert	This event policy matches alerts sent from LayerX with a major severity.	API	Major
LayerX Minor Alert	This event policy matches alerts sent from LayerX with a minor severity.	API	Minor
LayerX Informational Alert	This event policy matches alerts sent from LayerX with an informational severity.	API	Notice

VOSS Insights Event Severity to SL1 Event Severity Mapping

The following table lists the different names for the aligned events in VOSS Insights and SL1:

VOSS Insights Event Severity	SL1 Event Severity
Critical	Critical
Major	Major
Minor	Minor
Informational	Notice

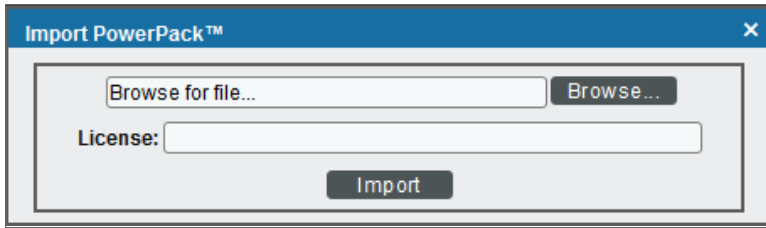
Installing the LayerX Integration PowerPack

TIP: By default, installing a new version of a PowerPack overwrites all content from a previous version of that PowerPack that has already been installed on the target system. You can use the **Enable Selective PowerPack Field Protection** setting in the **Behavior Settings** page (System > Settings > Behavior) to prevent new PowerPacks from overwriting local changes for some commonly customized fields. (For more information, see the **System Administration** manual.)

To download and install a PowerPack:

1. Download the PowerPack from the ScienceLogic Support Site at <https://support.sciencelogic.com/s/powerpacks>.

2. Go to the **PowerPack Manager** page (System > Manage > PowerPacks).
3. In the **PowerPack Manager** page, click the **[Actions]** button, then select *Import PowerPack*. The **Import PowerPack** dialog box appears:



4. Click the **[Browse]** button and navigate to the PowerPack file.
5. When the **PowerPack Installer** modal appears, click the **[Install]** button to install the PowerPack.

NOTE: If you exit the **PowerPack Installer** modal without installing the imported PowerPack, the imported PowerPack will not appear in the **PowerPack Manager** page. However, the imported PowerPack will appear in the **Imported PowerPacks** modal. This page appears when you click the **[Actions]** menu and select *Install PowerPack*.

Configuring VOSS Insights for SL1 Event Policies


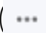
For steps on how to configure LayerX to send alerts to SL1, see the *Administration Guide* on the [LayerX Arbitrator documentation site](#).

Configuring LayerX and SL1 Dashboards

Overview

This chapter describes how to configure LayerX and SL1 to use the classic dashboards included in the *LayerX Integration PowerPack*.

Use the following menu options to navigate the SL1 user interface:

- To view a pop-out list of menu options, click the menu icon ().
- To view a page containing all of the menu options, click the Advanced menu icon ().

This chapter covers the following topics:

<i>Configuring VOSS Insights to Add SL1 Filters to Dashboards</i>	7
<i>Configuring the SL1 Classic Dashboards</i>	10
<i>Configuring Custom Links for LayerX</i>	13
<i>Dashboards</i>	14

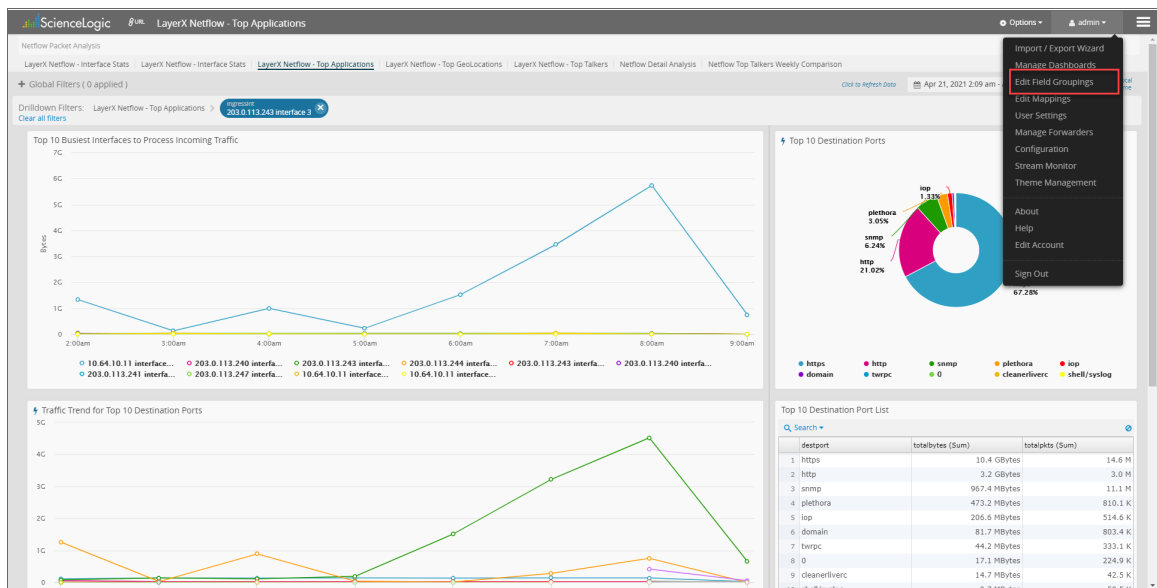
Configuring VOSS Insights to Add SL1 Filters to Dashboards

Before you can use the classic dashboards included in the *LayerX Integration PowerPack* or add Custom Links to the VOSS Insights dashboards, you must configure VOSS Insights to add SL1 filters to dashboards by creating field groupings.

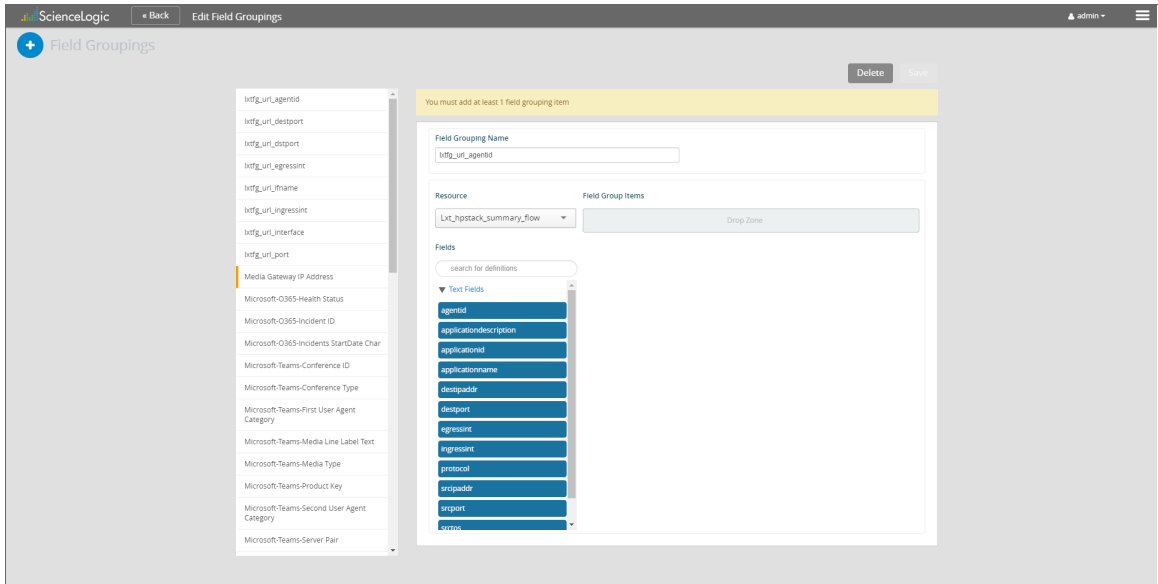
Creating Field Groupings in VOSS Insights to Add SL1 Filters to Dashboards

To configure VOSS Insights to add SL1 filters to dashboards:

1. Log in to VOSS Insights Analytix with an administrator account.
2. Select your username on the top-right of your VOSS Insights page and a drop-down menu appears. Select **[Edit Field Groupings]**:



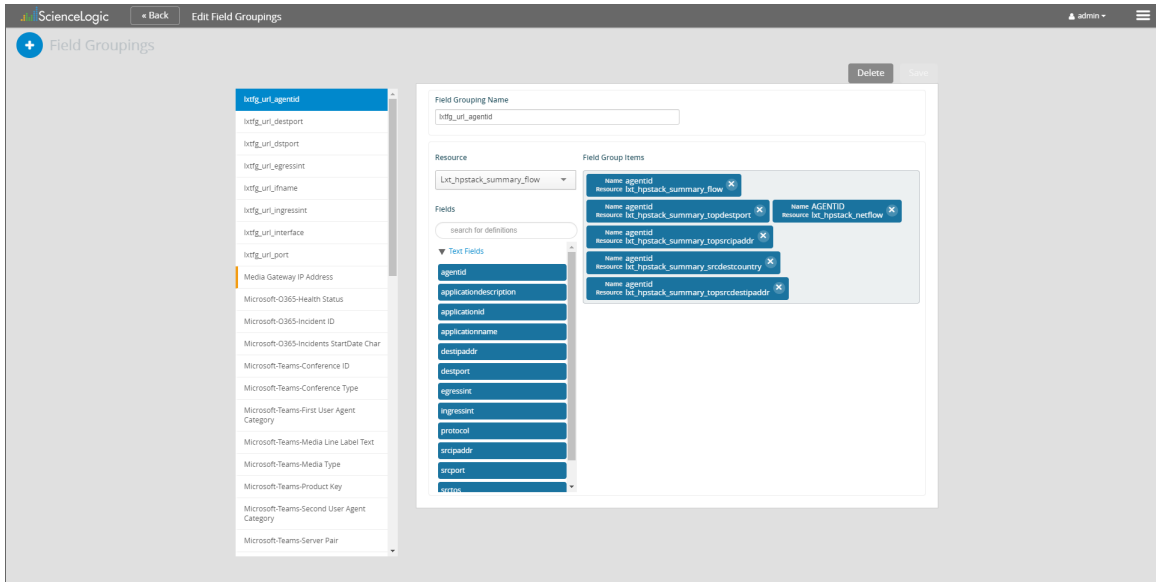
3. The **Field Grouping** page appears. Select the plus icon on the upper-left of the page to add a new field grouping:



4. Complete the following fields:
 - **Field Grouping Name.** Enter "lxtfg_url_agentid".
 - **Resource.** Select "Lxt_hpstack_summary_flow" from the drop-down.
5. Drag and drop the "agentid" field from the **Fields** list to the **Drop Zone**.
6. Repeat steps 4 and 5 but replace the values with the following Resources and Fields:

Resource	Field
lxt_hpstack_summary_topdestport	agentid
lxt_hpstack_summary_topsrcipaddr	agentid
lxt_hpstack_summary_srcdestcountry	agentid
lxt_hpstack_summary_topsrcdestipaddr	agentid
lxt_hpstack_nefflow	AGENTID

- Click **[Save]**. The completed field grouping should look like this:



- Repeat the steps in this section but replace the **Field Grouping Name**, **Resource**, and **Field** fields with the following values:

Field Grouping Name	Resource	Field
lxtfg_url_egressint	Lxt_hpstack_summary_flow	egressint
lxtfg_rul_ingressint	Lxt_hpstack_summary_flow	ingressint

Testing the Integration and Gathering Data to Configure SL1 Dashboards and Custom Links

The dashboards included in the *LayerX IntegrationPowerPack* and recommended Custom Links use the field groupings in the following VOSS Insights dashboards:

- LayerX Netflow - Top Applications
- LayerX Netflow - Top Talkers

To test the integration of SL1 with VOSS Insights and gather the information you need to configure the SL1 dashboards and custom links:

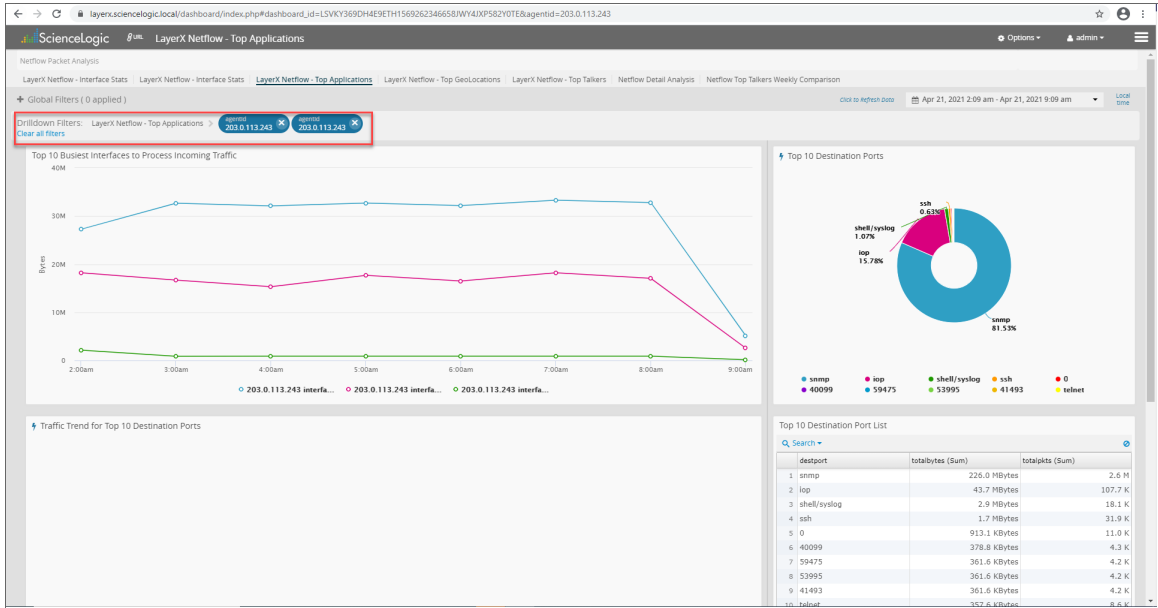
- Navigate to the "Top Applications" dashboard in VOSS Insights and copy the URL from the URL bar. You will need this URL when you configure SL1.

For example, your URL may look like this: https://layerx.sciencelogic.local/dashboard/index.php#dashboard_id=LSVKY369DH4E9ETH1569262346658JWY4JXP582Y0TE

- Note the IP address of a device that appears in the "Top Applications" dashboard.
- In the URL bar, enter "&agent_id=" and the IP address you noted to the end of the URL.

For example, if you use the above URL and the IP address is 203.0.113.243, the new URL is: https://layerx.sciencelogic.local/dashboard/index.php#dashboard_id=LSVKY369DH4E9ETH1569262346658JWY4JXP582YOTE&agentid=203.0.113.243

4. Enter the new URL in the URL bar and refresh the page. If your configuration is successful, "agentid" will appear in multiple filters in the "Drilldown Filters" section of the dashboard:



5. Repeat the steps in this section using the "LayerX Netflow - Top Talkers" dashboard.

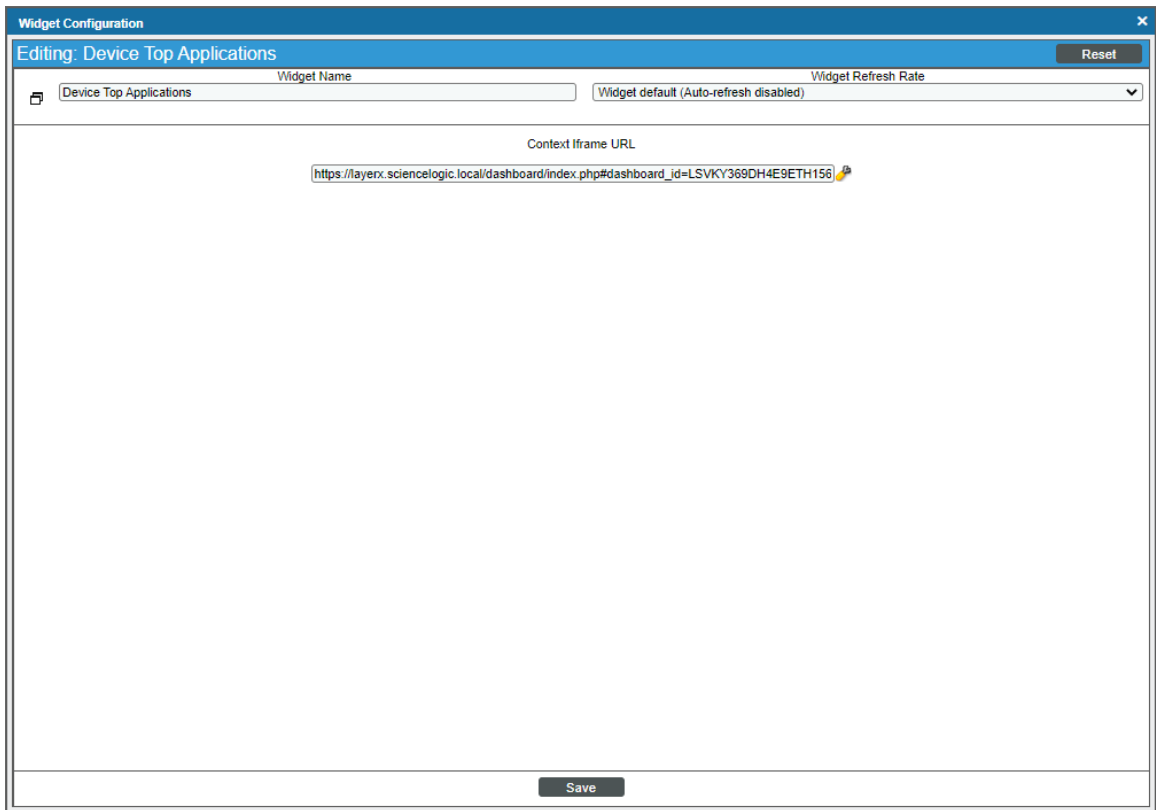
Configuring the SL1 Classic Dashboards

The *LayerX Integration PowerPack* includes device dashboards that use SL1 standard widgets that allow you to select a device or interface and provide summary information. Once successfully integrated, the main frame of the dashboard will display one of the two integrated VOSS Insights dashboards. The VOSS Insights dashboard that is displayed in the main frame is automatically filtered based on the device IP or interface you select.

To configure the SL1 dashboards:

1. In your SL1 system, click the **Dashboards** tab.
2. Select the SL1 dashboard you want to use. You may choose from the following dashboards that are included in the PowerPack:
 - LayerX Top Applications by Device
 - LayerX Top Applications by Inbound Interface
 - LayerX Top Applications by Outbound Interface
 - LayerX Top Talkers by Device

- LayerX Top Talkers by Inbound Interface
 - LayerX Top Talkers by Outbound Interface
3. Select a device in the **Filter by Device** pane or an interface in the **Top 10** pane.
 4. In the main pane that displays a VOSS Insights dashboard, hover over the arrow icon on the top right of the pane and the **Options** menu appears. Click the **Options** menu.
 5. Select [**Configure**]. The **Widget Configuration** modal page appears:



6. Edit the following field:
 - **Context Iframe URL**. Replace the URL up to the first ampersand with the URL of the corresponding VOSS Insights dashboard. For example, use the following scenario:
 - The "LayerX Top Applications by Device" SL1 dashboard uses the "LayerX Netflow - Top Applications" LayerX dashboard to populate the main pane.
 - The default value for the **Context Iframe URL** field is "https://layerx.sciencelogic.local/dashboard/index.php#dashboard_id=LSVKY369DH4E9ETH1569262346658JWY4JXP582YOTE&agentid={context.deviceObjects.last.ip}".

- If the URL from your "LayerX Netflow - Top Applications" dashboard is "https://layerx.example.com/dashboard/index.php#dashboard_id=ABC123XYZ", your new **Context Iframe URL** field should be "https://layerx.example.com/dashboard/index.php#dashboard_id=ABC123XYZ&agentid={context.deviceObjects.last.ip}"

7. Click **[Save]**.
8. Repeat the steps in this section for all dashboards included in the *LayerX Integration PowerPack*. See the table below for each SL1 dashboard included in the PowerPack and the aligned VOSS Insights dashboard.

SL1 Dashboard	LayerX Dashboard
LayerX Top Applications by Device	LayerX Netflow - Top Applications
LayerX Top Applications by Inbound Interface	LayerX Netflow - Top Applications
LayerX Top Applications by Outbound Interface	LayerX Netflow - Top Applications
LayerX Top Talkers by Device	LayerX Netflow - Top Talkers
LayerX Top Talkers by Inbound Interface	LayerX Netflow - Top Talkers
LayerX Top Talkers by Outbound Interface	LayerX Netflow - Top Talkers

The SL1 dashboards above have the following default URLs that are used when editing the **Widget Configuration** modal page:

- LayerX Top Applications by Device:


```
https://layerx.sciencelogic.local/dashboard/index.php#dashboard_id=LSVKY369DH4E9ETH1569262346658JWY4JXP582YOTE&agentid={context.deviceObjects.last.ip}
```
- LayerX Top Applications by Inbound Interface:


```
https://layerx.sciencelogic.local/dashboard/index.php#dashboard_id=LSVKY369DH4E9ETH1569262346658JWY4JXP582YOTE&ingressint={context.interfaceObjects.last.device.ip} interface {context.interfaceObjects.last.ifIndex}
```
- LayerX Top Applications by Outbound Interface:


```
https://layerx.sciencelogic.local/dashboard/index.php#dashboard_id=LSVKY369DH4E9ETH1569262346658JWY4JXP582YOTE&egressint={context.interfaceObjects.last.device.ip} interface {context.interfaceObjects.last.ifIndex}
```
- LayerX Top Talkers by Device:


```
https://layerx.sciencelogic.local/dashboard/index.php#dashboard_id=SDCVRDBF06KAQGI81567616683197W51BJBML2G0B5O&agentid={context.deviceObjects.last.ip}
```
- LayerX Top Talkers by Inbound Interface:

```
https://layerx.sciencelogic.local/dashboard/index.php#dashboard_
id=SDCVRDBF06KAQGI81567616683197W5IBJML2G0B5O&ingressint=
{context.interfaceObjects.last.device.ip} interface {context.interfaceObjects.last.ifIndex}
```

- LayerX Top Talkers by Outbound Interface:

```
https://layerx.sciencelogic.local/dashboard/index.php#dashboard_
id=SDCVRDBF06KAQGI81567616683197W5IBJML2G0B5O&egressint=
{context.interfaceObjects.last.device.ip} interface {context.interfaceObjects.last.ifIndex}
```

Configuring Custom Links for LayerX

If you are using SL1 platform version 10.2.0 or later, you can configure Custom Links from the SL1 Toolbox to VOSS Insights dashboards. ScienceLogic recommends adding links to the "LayerX Netflow - Top Talkers" and "LayerX Netflow - Top Applications" VOSS Insights dashboards.

NOTE: For more information about custom links, see the chapter on "Custom Links" in the *Customizing the User Experience* manual.

Defining the LayerX Dashboard Links

There are two mutations you must run in the GraphiQL interface to link both VOSS Insights dashboards to SL1.

Adding the LayerX Netflow - Top Application Dashboard Custom Link

To add the "LayerX Netflow - Top Application" dashboard link to SL1:

1. Type the URL or IP address for SL1 in a browser, add `/gql` to the end of the URL or IP address, and press **[Enter]**. The GraphiQL interface appears.
2. In the main query pane, type the following mutation but replace the first part of the URL, up to the ampersand, with the URL of your "LayerX Netflow - Top Applications" dashboard. For example:

```
mutation createLXTopAppCustomLink {
  createCustomLink(entity: device, url:
"https://layerx.sciencelogic.local/dashboard/index.php#dashboard_
id=LSVKY369DH4E9ETH1569262346658JWY4JXP582Y0TE&agentid={ip}", name: "LayerX Top
Applications") { id entity url name editedBy { user } dateEdited }
}
```

3. Click the **[Execute Query]** (Play) button. The mutation executes, and the results appear in your SL1 dashboards.

Adding the LayerX Netflow - Top Talkers Dashboard Custom Link

To add the "LayerX Netflow - Top Talkers" dashboard link to SL1:

1. To access the GraphiQL interface, type the URL or IP address for SL1 in a browser, add **/gql** to the end of the URL or IP address, and press **[Enter]**. The GraphiQL interface appears.
2. In the main query pane, type the following mutation but replace the first part of the URL, up to the ampersand, with the URL of your "LayerX Netflow - Top Talkers" dashboard:

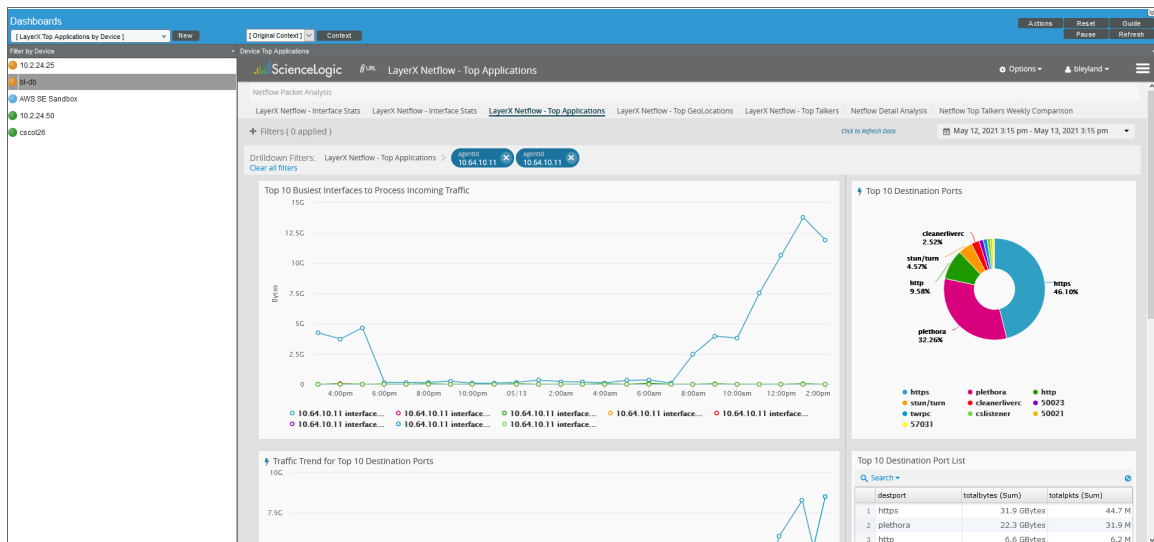
```
mutation createLXTopTalkersCustomLink {
  createCustomLink(entity: device, url:
  "https://layerx.sciencelogic.local/dashboard/index.php#dashboard_
  id=SDCVRDBF06KAQGI81567616683197W5IBJBML2G0B50&agentid={ip}", name: "LayerX Top
  Talkers") { id entity url name editedBy { user } dateEdited }
}
```

3. Click the **[Execute Query]** (Play) button. The mutation executes, and the results appear in your SL1 dashboards.

Dashboards

The *LayerX Integration PowerPack* includes dashboards that provide summary information for VOSS Insights devices. Once you have configured SL1 and VOSS Insights, the following device dashboards in the *LayerX Integration PowerPack* display information about your VOSS Insights devices.

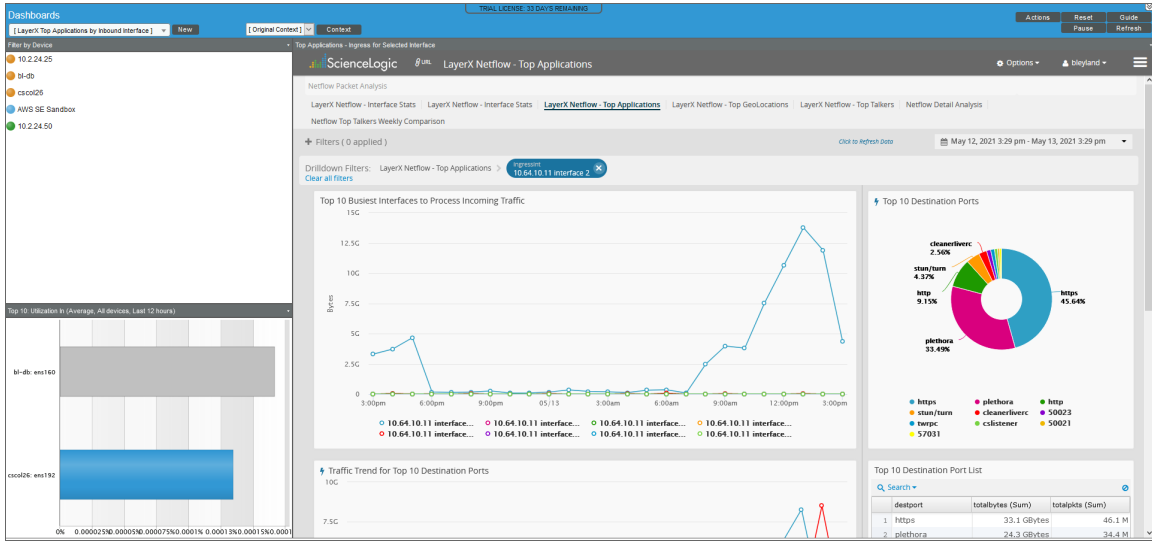
LayerX Top Applications by Device



The LayerX Top Applications by Device dashboard displays the following information:

- A widget to select a device
- The integrated LayerX Netflow - Top Applications dashboard

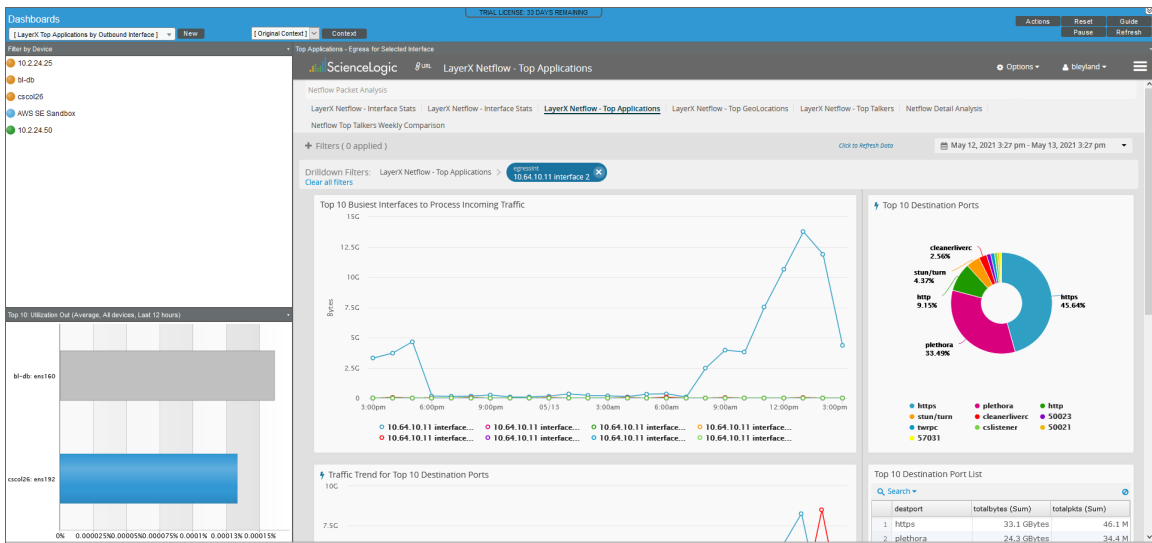
LayerX Top Applications by Inbound Interface



The LayerX Top Applications by Inbound Interface dashboard displays the following information:

- A widget to select a device
- Top ten interfaces, sorted by utilization in
- The integrated LayerX Netflow - Top Applications dashboard

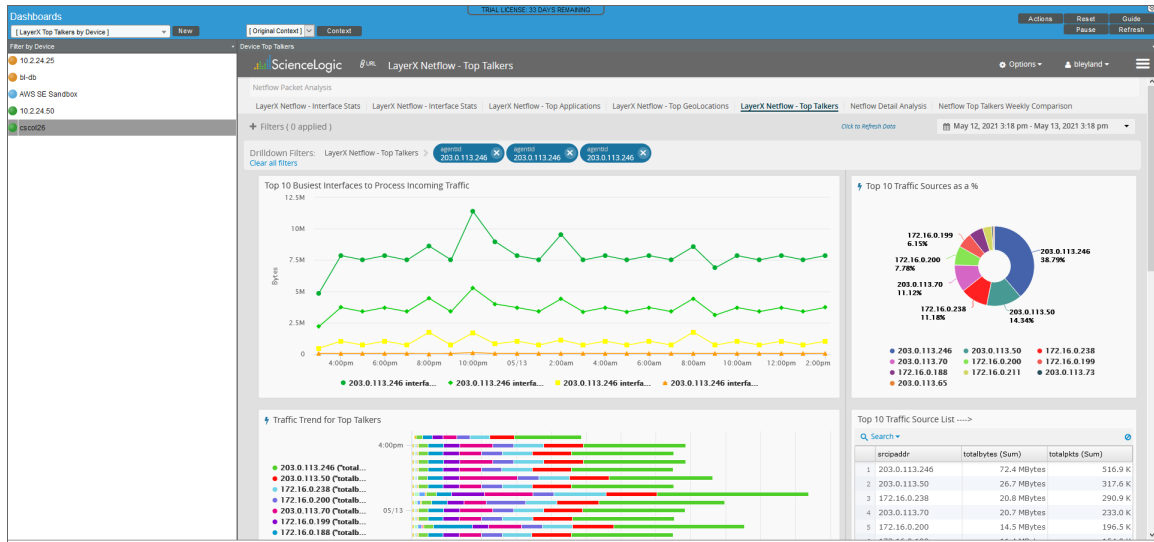
LayerX Top Applications by Outbound Interface



The LayerX Top Applications by Outbound Interface dashboard displays the following information:

- A widget to select a device
- Top ten devices, sorted by utilization out
- The integrated LayerX Nefflow - Top Applications dashboard

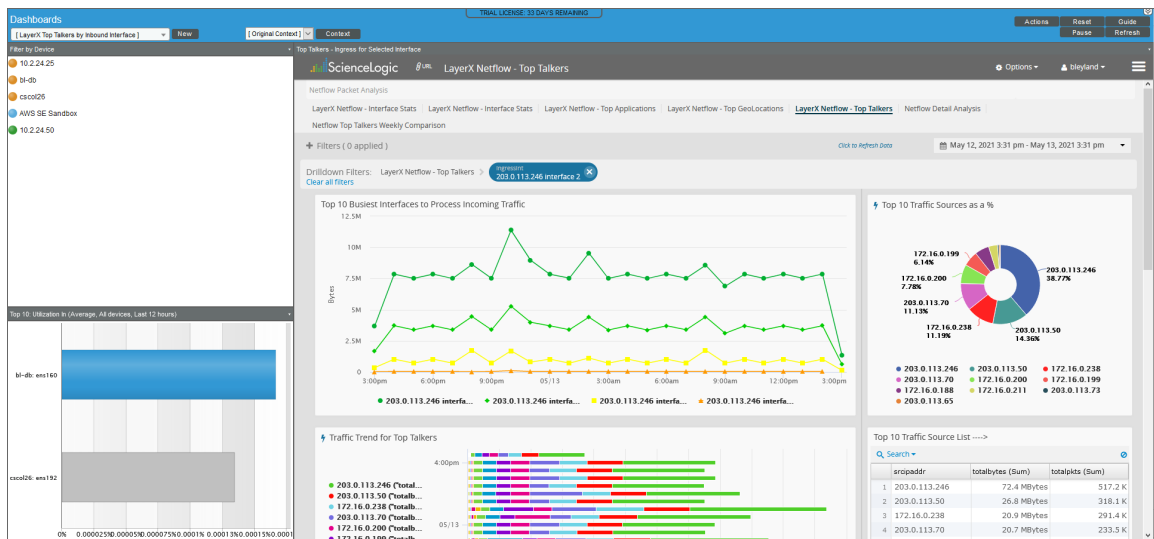
LayerX Top Talkers by Device



The LayerX Top Talkers by Device dashboard displays the following information:

- A widget to select a device
- The integrated LayerX Nefflow - Top Talkers dashboard

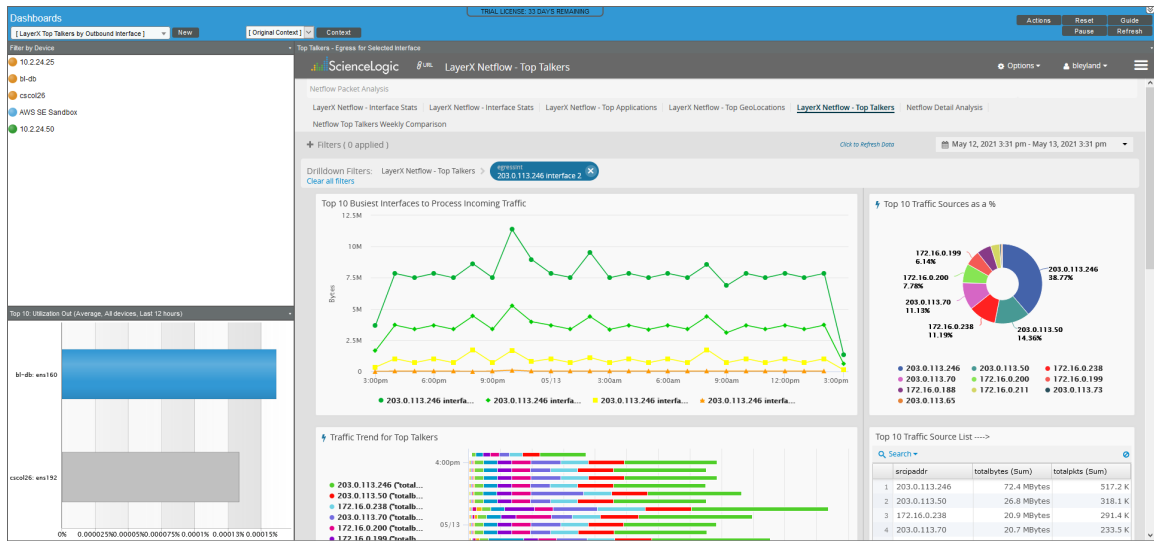
LayerX Top Talkers by Inbound Interface



The LayerX Top Talkers by Inbound Interface dashboard displays the following information:

- A widget to select a device
- Top ten devices, sorted by utilization in
- The integrated LayerX Netflow - Top Talkers dashboard

LayerX Top Talkers by Outbound Interface



The LayerX Top Talkers by Outbound Interface dashboard displays the following information:

- A widget to select a device
- Top ten devices, sorted by utilization out
- The integrated LayerX Netflow - Top Talkers dashboard

© 2003 - 2022, ScienceLogic, Inc.

All rights reserved.

LIMITATION OF LIABILITY AND GENERAL DISCLAIMER

ALL INFORMATION AVAILABLE IN THIS GUIDE IS PROVIDED "AS IS," WITHOUT WARRANTY OF ANY KIND, EITHER EXPRESS OR IMPLIED. SCIENCELOGIC™ AND ITS SUPPLIERS DISCLAIM ALL WARRANTIES, EXPRESS OR IMPLIED, INCLUDING, BUT NOT LIMITED TO, THE IMPLIED WARRANTIES OF MERCHANTABILITY, FITNESS FOR A PARTICULAR PURPOSE OR NON-INFRINGEMENT.

Although ScienceLogic™ has attempted to provide accurate information on this Site, information on this Site may contain inadvertent technical inaccuracies or typographical errors, and ScienceLogic™ assumes no responsibility for the accuracy of the information. Information may be changed or updated without notice. ScienceLogic™ may also make improvements and / or changes in the products or services described in this Site at any time without notice.

Copyrights and Trademarks

ScienceLogic, the ScienceLogic logo, and EM7 are trademarks of ScienceLogic, Inc. in the United States, other countries, or both.

Below is a list of trademarks and service marks that should be credited to ScienceLogic, Inc. The ® and ™ symbols reflect the trademark registration status in the U.S. Patent and Trademark Office and may not be appropriate for materials to be distributed outside the United States.

- ScienceLogic™
- EM7™ and em7™
- Simplify IT™
- Dynamic Application™
- Relational Infrastructure Management™

The absence of a product or service name, slogan or logo from this list does not constitute a waiver of ScienceLogic's trademark or other intellectual property rights concerning that name, slogan, or logo.

Please note that laws concerning use of trademarks or product names vary by country. Always consult a local attorney for additional guidance.

Other

If any provision of this agreement shall be unlawful, void, or for any reason unenforceable, then that provision shall be deemed severable from this agreement and shall not affect the validity and enforceability of any remaining provisions. This is the entire agreement between the parties relating to the matters contained herein.

In the U.S. and other jurisdictions, trademark owners have a duty to police the use of their marks. Therefore, if you become aware of any improper use of ScienceLogic Trademarks, including infringement or counterfeiting by third parties, report them to Science Logic's legal department immediately. Report as much detail as possible about the misuse, including the name of the party, contact information, and copies or photographs of the potential misuse to: legal@sciencelogic.com. For more information, see <https://sciencelogic.com/company/legal>.

ScienceLogic

800-SCI-LOGIC (1-800-724-5644)

International: +1-703-354-1010