



Monitoring Cisco ACI

Cisco: ACI PowerPack version 106

Table of Contents

Introduction	1
Supported Versions	2
Cisco ACI PowerPacks	2
Content in the Cisco ACI PowerPacks	2
Cisco: ACI	2
Cisco: ACI Dashboards	3
Cisco: ACI Reports	3
What Does the Cisco: ACI PowerPack Monitor?	3
Installing the Cisco ACI PowerPacks	4
Discovering a Cisco ACI System	6
Prerequisites for Monitoring Cisco ACI	6
Configuring a Credential for the Cisco ACI System	6
Discovering a Cisco ACI System	7
Viewing Information About the ACI System	10
Cisco ACI Dashboards	12
ACI Application Dashboard	12
ACI Health Dashboard	14
ACI Leaf Health Dashboard	15
ACI Overview Dashboard	16
ACI Spine Health Dashboard	17
ACI Switch Dashboard	18
ACI Switch Interface Dashboard	20
ACI Tenant Health Dashboard	21

Introduction

Overview

This manual describes how to monitor a Cisco Application Centric Infrastructure system (ACI) in the ScienceLogic platform using the *Cisco: ACI PowerPack*.

The following sections provide an overview of Cisco ACI systems and the *Cisco: ACI PowerPack*:

<i>Supported Versions</i>	2
<i>Cisco ACI PowerPacks</i>	2
<i>Content in the Cisco ACI PowerPacks</i>	2
<i>Cisco: ACI</i>	2
<i>Cisco: ACI Dashboards</i>	3
<i>Cisco: ACI Reports</i>	3
<i>What Does the Cisco: ACI PowerPack Monitor?</i>	3
<i>Installing the Cisco ACI PowerPacks</i>	4

NOTE: ScienceLogic provides this documentation for the convenience of ScienceLogic customers. Some of the configuration information contained herein pertains to third-party vendor software that is subject to change without notice to ScienceLogic. ScienceLogic makes every attempt to maintain accurate technical information and cannot be held responsible for defects or changes in third-party vendor software. There is no written or implied guarantee that information contained herein will work for all third-party variants. See the End User License Agreement (EULA) for more information.

Supported Versions

The *Cisco: ACI PowerPack* can be used to monitor versions of Cisco ACI 1.0 (3f) and later.

Cisco ACI PowerPacks

To monitor a Cisco Application Centric Infrastructure (ACI) system using the ScienceLogic platform, you must install the following PowerPack:

- *Cisco: ACI*

The following optional PowerPacks provide dashboards and reports for ACI:

- *Cisco: ACI Dashboards*
- *Cisco: ACI Reports*

Content in the Cisco ACI PowerPacks

Cisco: ACI

The *Cisco: ACI PowerPack* allows you to discover, model, and collect data from a Cisco ACI system. The *Cisco: ACI PowerPack* includes:

- An example credential you can use to create credentials to connect to the Cisco ACI system
- Dynamic Applications that discover and monitor the Cisco ACI system
- Run Book Automation Policies and Action Policies that create device records for ACI tenants and that convert a physical device to a virtual device with the same IP address and aligned Dynamic Applications
- Events for alert conditions in the Cisco ACI system
- Device Classes and Device Categories for each type of device in the Cisco ACI system
- Device dashboards for each type of discovered device

NOTE: The Run Book Actions included in the *Cisco: ACI PowerPack* can authenticate API requests using SHA256 hashing when running Federal Information Processing Standard (FIPS)-compliant installations of the ScienceLogic platform version 8.4.2 and later. The actions also support OpenSSL MD5 hashing for non-FIPS-compliant installations. For more information about authenticating API requests, see the *Using the ScienceLogic API* manual.

Cisco: ACI Dashboards

The *Cisco: ACI Dashboards* PowerPack includes pre-defined and configured dashboards that allow you to view data collected from Cisco ACI systems.

Cisco: ACI Reports

The *Cisco: ACI Reports* PowerPack includes reports that allow you to view data collected from Cisco ACI systems.

What Does the Cisco: ACI PowerPack Monitor?

The ScienceLogic platform discovers and monitors the following Cisco ACI components:

- **Clusters of hardware-based servers that host the APIC.** This is the hardware that hosts the APIC (Application Policy Infrastructure Controllers). An APIC manages the physical and virtual infrastructure of ACI. This hardware cluster has an IP address. Initially, the ScienceLogic platform uses this IP address to discover the ACI system. The ScienceLogic platform displays each cluster as a component device with an IP address.
- **Application Policy Infrastructure Controllers (APICs).** These are virtual machines that run on a cluster of hardware-based hosts. Each APIC is the unified point of automation, management, monitoring, and programmability for the ACI system. APICs control the physical and virtual infrastructure of ACI. Among other tasks, each APIC:
 - Controls policies that define ACI deployment of applications
 - Controls policies that define all automation and management
 - Hosts the API for ACI
 - Monitors the health of each component of ACI

The ScienceLogic platform displays each APIC as a component device.

- **Spine Switches (Nexus 9K-family switches).** These are hardware-based, stateless switches. These switches are the spine switches of the ACI infrastructure and provide switching and load-balancing across leaf switches. The ScienceLogic platform displays each spine switch as a component device.
- **Leaf Switches (Nexus 9K-family switches).** These are hardware-based, stateless switches. These switches are the leaf switches of the ACI infrastructure and provide switching. All devices in the ACI network communicate via leaf switches. Traffic with the source and destination on the same leaf switch is handled locally; traffic with the source and destination on two different leaf switches travels through a spine switch. The ScienceLogic platform displays each leaf switch as a component device.
- **Fabric.** A fabric is an instance of an ACI network. A fabric includes an APIC, spine switches, and leaf switches. The ScienceLogic platform displays the fabric name as the prefix to each tenant.
- **Pods.** A pod is a virtual device that is a container for all the APICs, spine switches, leaf switches, and associated descendents in an ACI infrastructure. The ScienceLogic platform displays each pod as a component device.

- **Tenants.** A tenant is a container for policies. These policies control domain-based access within the ACI network. There are three tenants for each fabric in ACI: Common, infrastructure, and management.
 - The common tenant contains policies for resources that are used by all tenants, including firewalls, load balancers, intrusion detection, and Layer 4 to Layer 7 services.
 - The infrastructure tenant contains policies that control the fabric resources (like the fabric VXLAN) and also policies that deploy resources.
 - The management tenant contains policies that control operations of the fabric and communication with the virtual machine controllers. The ScienceLogic platform displays each tenant as a virtual device.

The ScienceLogic platform displays each tenant as a virtual device. The name of each tenant is *fabric::tenant*. For example, **ACI Fabric 1::common**.

- **Endpoint Groups (EPGs).** Endpoints are devices that are connected to the network directly or indirectly (e.g., servers, virtual machines, or network-attached storage). They have an address, a location, attributes (e.g., version or patch level), and can be physical or virtual. An endpoint group is a group of endpoints that have common policy requirements, such as security, virtual machine mobility (VMM), QoS, or Layer 4 to Layer 7 services. For example, an endpoint group could contain all the endpoints in an application's web tier. Rather than configure and manage endpoints individually, they are placed in an endpoint group and are managed as a group. The ScienceLogic platform displays each endpoint group as a component device.
- **Application Network Profiles.** An Application Network Profile is a container that holds:
 - Multiple endpoint groups that are logically related to one another
 - The connections between the EPGs
 - The policies that define the connections between EPGs

Application Network Profiles can be organized by:

- The application they provide, by the function they provide (e.g., "infrastructure")
- Their location in the data center structure (for example, "DMZ")
- Any organizing principle that is required by your ACI implementation

The ScienceLogic platform displays each Application Network Profile as a component device.

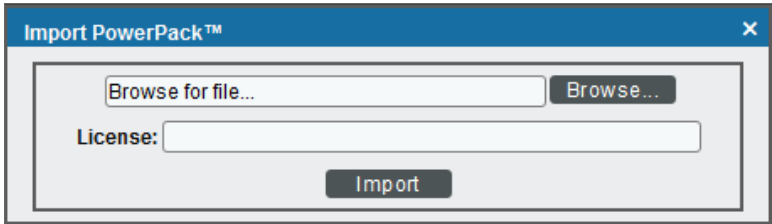
Installing the Cisco ACI PowerPacks

Before completing the steps in this manual, you must import and install the latest version of the *Cisco: ACI PowerPack*. Optionally, you can also install the *Cisco: ACI Dashboards PowerPack* and the *Cisco: ACI Reports PowerPack*.

TIP: By default, installing a new version of a PowerPack overwrites all content in that PowerPack that has already been installed on the target system. You can use the **Enable Selective PowerPack Field Protection** setting in the **Behavior Settings** page (System > Settings > Behavior) to prevent new PowerPacks from overwriting local changes for some commonly customized fields. (For more information, see the **System Administration** manual.)

To download and install a PowerPack:

1. Download the PowerPack from the [ScienceLogic Customer Portal](#).
2. Go to the **PowerPack Manager** page (System > Manage > PowerPacks).
3. In the **PowerPack Manager** page, click the **[Actions]** button, then select *Import PowerPack*.
4. The **Import PowerPack** dialog box appears:



5. Click the **[Browse]** button and navigate to the PowerPack file.
6. When the **PowerPack Installer** modal page appears, click the **[Install]** button to install the PowerPack.

NOTE: If you exit the **PowerPack Installer** modal page without installing the imported PowerPack, the imported PowerPack will not appear in the **PowerPack Manager** page. However, the imported PowerPack will appear in the **Imported PowerPacks** modal page. This page appears when you click the **[Actions]** menu and select *Install PowerPack*.

Discovering a Cisco ACI System

Overview

The following sections describe how to configure and discover Cisco Application Centric Infrastructure (ACI) component devices for monitoring by the ScienceLogic platform using the *Cisco: ACI PowerPack*:

<i>Prerequisites for Monitoring Cisco ACI</i>	6
<i>Configuring a Credential for the Cisco ACI System</i>	6
<i>Discovering a Cisco ACI System</i>	7
<i>Viewing Information About the ACI System</i>	10

Prerequisites for Monitoring Cisco ACI

To configure the ScienceLogic system to monitor a Cisco ACI system using the *Cisco: ACI PowerPack*, you must first:

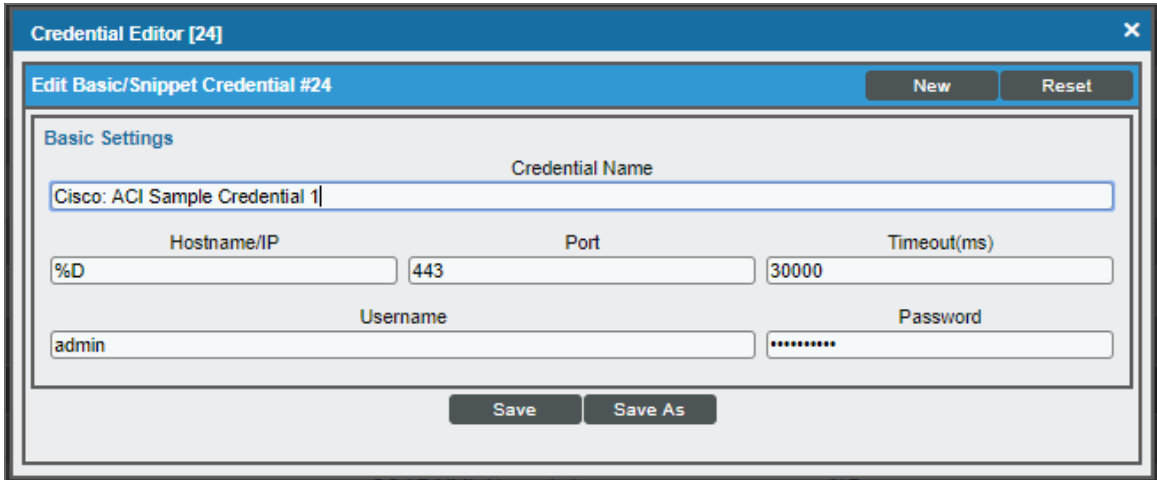
- Know the credentials (username and password) for a user account that has access to the API for the Cisco ACI system. The user account must have read-all access.
- Ensure that the APIC in your ACI system supports TLS 1.1 or TLS 1.2. The ScienceLogic platform does not support TLS 1.0.

Configuring a Credential for the Cisco ACI System

The *Cisco: ACI PowerPack* includes an example credential (*Cisco: ACI Sample Credential 1*) that you can use to create a credential for discovering your Cisco ACI system. This sample credential includes a single IP address in the **Hostname/IP** field.

To configure a credential for Cisco ACI, perform the following steps:

1. Go to the **Credential Management** page (System > Manage > Credentials).
2. Click the wrench icon (🔧) for *Cisco: ACI Sample Credential 1*. The **Credential Editor** page appears:



The screenshot shows a web-based 'Credential Editor' window. The title bar reads 'Credential Editor [24]'. Below the title bar, there's a sub-header 'Edit Basic/Snippet Credential #24' with 'New' and 'Reset' buttons. The main content area is titled 'Basic Settings' and contains several input fields: 'Credential Name' (with the value 'Cisco: ACI Sample Credential 1'), 'Hostname/IP' (with the value '%D'), 'Port' (with the value '443'), 'Timeout(ms)' (with the value '30000'), 'Username' (with the value 'admin'), and 'Password' (with masked characters '*****'). At the bottom of the form are 'Save' and 'Save As' buttons.

3. Supply values in the following fields:
 - **Credential Name**. Type a new name for the credential.
 - **Hostname/IP**. Enter "%D". You can enter the IP address of the cluster where the APIC resides, but this is not recommended.
 - **Username**. Type the username for a user account that has read-all access to the APIC API.
 - **Password**. Type the password for the username you entered in the **Username** field.
4. Click the **[Save As]** button.

Discovering a Cisco ACI System

To discover a Cisco ACI system, perform the following steps:

1. Go to the **Discovery Control Panel** page (System > Manage > Discovery).

- Click the **[Create]** button. The **Discovery Session Editor** page appears:

- Supply values in the following fields:

- **IP Address Discovery List.** Enter the IP address of one of the servers in the cluster where the APIC resides.
- **Other Credentials.** Select the credential you created for the Cisco ACI system.
- **Discover Non-SNMP.** Select this checkbox.

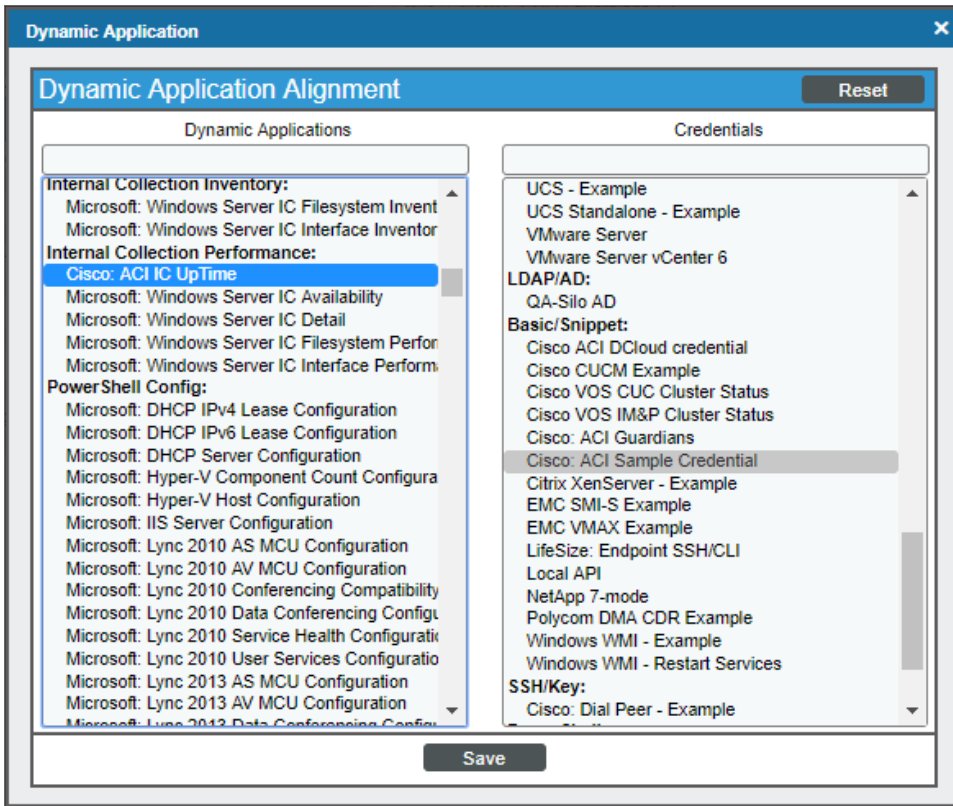
- Optionally, supply values in the other fields in this page. For a description of the fields in this page, see the **Discovery & Credentials** manual.
- Click the **[Save]** button.
- The **Discovery Control Panel** page will refresh. Click the lightning bolt icon (⚡) for the discovery session you just created.
- In the pop-up window that appears, click the **[OK]** button. The page displays the progress of the discovery session.

NOTE: If your discovery session causes an HTTP 403 error, edit the credential so that the **Hostname/IP** field contains **only a single IP address** and then re-try discovery.

The initial discovery of a Cisco ACI system will align most Dynamic Applications; however, you will need to manually align the "Cisco: ACI IC UpTime" Dynamic Application for the internal collections data to be displayed on the **Device Properties** page (Registry > Devices > wrench icon).

To manually align the "Cisco: ACI IC UpTime" Dynamic Application:

1. From the **Device Properties** page for the Cisco ACI system, click the **[Collections]** tab. The **Dynamic Application Collections** page appears.
2. In the **Dynamic Application Collections** page, click the **[Action]** button and then select *Add Dynamic Application* from the menu. The **Dynamic Application Alignment** page appears.
3. In the **Dynamic Applications** field, select *Cisco: ACI IC UpTime*.



4. In the **Credentials** field, select the credential you created for the Cisco ACI system.
5. Click the **[Save]** button.
6. After aligning the Dynamic Application, click the **[Reset]** button and then click the plus icon (+) for the Dynamic Application. If collection for the Dynamic Application was successful, the graph icons (📊) for the Dynamic Application are enabled.

Viewing Information About the ACI System

When the ScienceLogic platform performs collection for the ACI cluster, the ScienceLogic platform will create component devices for the components associated with the ACI system and align other Dynamic Applications to those component devices. Some of the Dynamic Applications aligned to the component devices will also be used to create additional component devices.

You can view all the devices, virtual devices, and component devices in the Cisco ACI system in the following places in the user interface:

- All devices, virtual devices, and component devices appear in the **Device Manager** page (Registry > Devices > Device Manager).

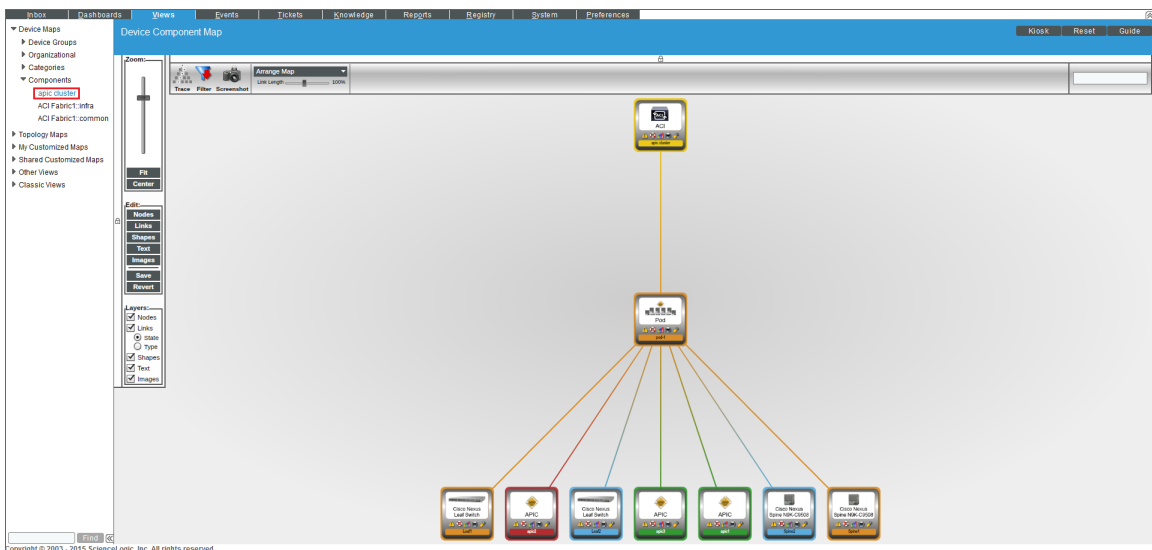
The screenshot shows the 'Device Manager' page with a table of 9 devices. The table columns are: Device Name, IP Address, Device Category, Device Class | Sub-class, DID, Organization, Current State, Collection Group, Collection State, SAMP Credential, and SAMP Version. The devices listed are: apic1, apic1, apic2, apic2, leaf1, leaf2, pod-1, spine1, and spine2. The 'Current State' column shows various status icons and labels like 'Healthy', 'Notice', 'Critical', and 'Major'.

Device Name	IP Address	Device Category	Device Class Sub-class	DID	Organization	Current State	Collection Group	Collection State	SAMP Credential	SAMP Version
1. apic1	199.18.133.200	Network.Utility	Cisco Systems ACI	1	System	Healthy	CLUG1	Active	--	--
2. apic1	--	Network.Application	Cisco Systems ACI APIC Controller	7	System	Notice	CLUG1	Active	--	--
3. apic2	--	Network.Application	Cisco Systems ACI APIC Controller	4	System	Critical	CLUG1	Active	--	--
4. apic2	--	Network.Application	Cisco Systems ACI APIC Controller	6	System	Notice	CLUG1	Active	--	--
5. leaf1	--	Network.Leaf	Cisco Systems Nexus Leaf	3	System	Major	CLUG1	Active	--	--
6. leaf2	--	Network.Leaf	Cisco Systems Nexus Leaf	5	System	Notice	CLUG1	Active	--	--
7. pod-1	--	Network.Utility	Cisco Systems ACI Pod	2	System	Notice	CLUG1	Active	--	--
8. spine1	--	Network.Spine	Cisco Systems Nexus N9K-C9508	9	System	Major	CLUG1	Active	--	--
9. spine2	--	Network.Spine	Cisco Systems Nexus N9K-C9508	8	System	Notice	CLUG1	Active	--	--

- The **Device Components** page (Registry > Devices > Device Components) displays a list of all root devices and component devices discovered by the ScienceLogic platform in an indented view, so you can easily view the hierarchy and relationships between child devices, parent devices, and root devices. To view the component devices associated with Cisco ACI, find the Cisco ACI root device and click its plus icon (+):

Device Name	IP Address	Device Category	Device Class Sub-class	DID	System	Organization	Current State	Collection Group	Collection State
1. ACI Fabric: common	--	Infrastructure	Cisco Systems ACI Tenant	11	System		Minor	CUG1	Active
1. default	--	Infrastructure	Cisco Systems ACI Application Network Profile	14	System		Major	CUG1	Unavailable
2. ACI Fabric: infra	--	Infrastructure	Cisco Systems ACI Tenant	10	System		Minor	CUG1	Active
1. access	--	Infrastructure	Cisco Systems ACI Application Network Profile	13	System		Minor	CUG1	Unavailable
3. spic cluster	198.18.133.200	Utility	Cisco Systems ACI	1	System		Minor	CUG1	Active
1. pod-1	--	Utility	Cisco Systems ACI Pod	2	System		Major	CUG1	Unavailable
1. spic1	--	Application	Cisco Systems ACI APIC Controller	7	System		Healthy	CUG1	Unavailable
2. spic2	--	Application	Cisco Systems ACI APIC Controller	4	System		Critical	CUG1	Unavailable
3. spic3	--	Application	Cisco Systems ACI APIC Controller	6	System		Healthy	CUG1	Unavailable
4. Leaf1	--	Leaf	Cisco Systems Nexus Leaf	3	System		Major	CUG1	Unavailable
5. Leaf2	--	Leaf	Cisco Systems Nexus Leaf	5	System		Notice	CUG1	Unavailable
6. Spine1	--	Spine	Cisco Systems Nexus N9K-C9508	9	System		Major	CUG1	Unavailable
7. Spine2	--	Spine	Cisco Systems Nexus N9K-C9508	8	System		Notice	CUG1	Unavailable

- The **Device Component Map** page (Views > Device Maps > Components) allows you to view devices by root node and view the relationships between root nodes, parent components, and child components in a map. This makes it easy to visualize and manage root nodes and their components. The ScienceLogic platform automatically updates the **Component Map** as new component devices are discovered. The platform also updates each map with the latest status and event information. To view the map for Cisco ACI devices, go to the **Component Map** page and select the map from the list in the left NavBar. To learn more about the **Component Map** page, see the **Views** manual.



Chapter

3

Cisco ACI Dashboards

Overview

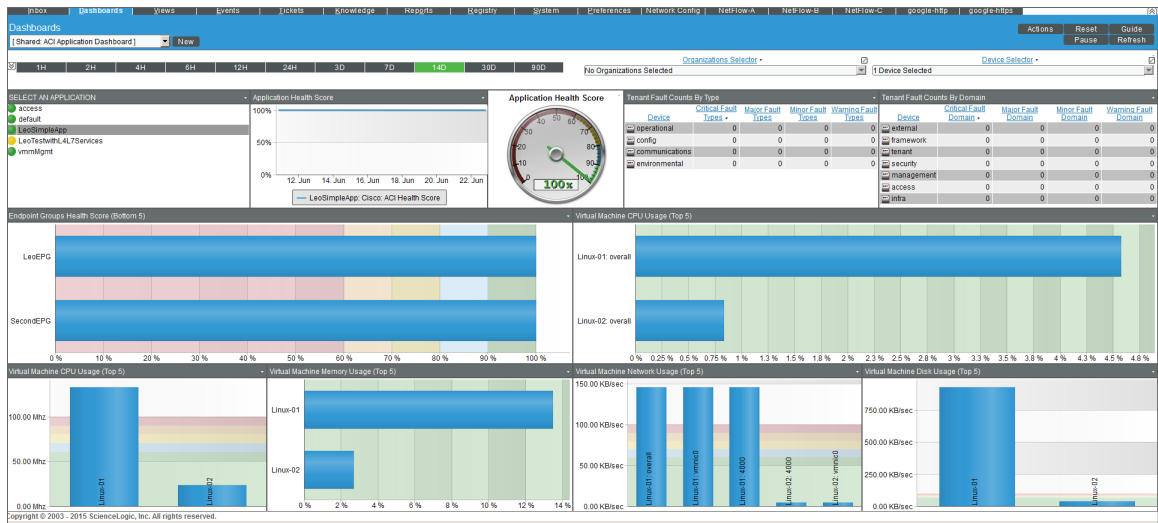
The *Cisco: ACI PowerPack* comes paired with the *Cisco: ACI Dashboards PowerPack*. The *Cisco: ACI Dashboards PowerPack* contains dashboards that present data related to different aspects of a Cisco ACI system.

The following sections describe each of these dashboards:

<i>ACI Application Dashboard</i>	12
<i>ACI Health Dashboard</i>	14
<i>ACI Leaf Health Dashboard</i>	15
<i>ACI Overview Dashboard</i>	16
<i>ACI Spine Health Dashboard</i>	17
<i>ACI Switch Dashboard</i>	18
<i>ACI Switch Interface Dashboard</i>	20
<i>ACI Tenant Health Dashboard</i>	21

ACI Application Dashboard

The ACI Application Dashboard provides an overview of a selected Application Network Profile running on a Cisco ACI system.



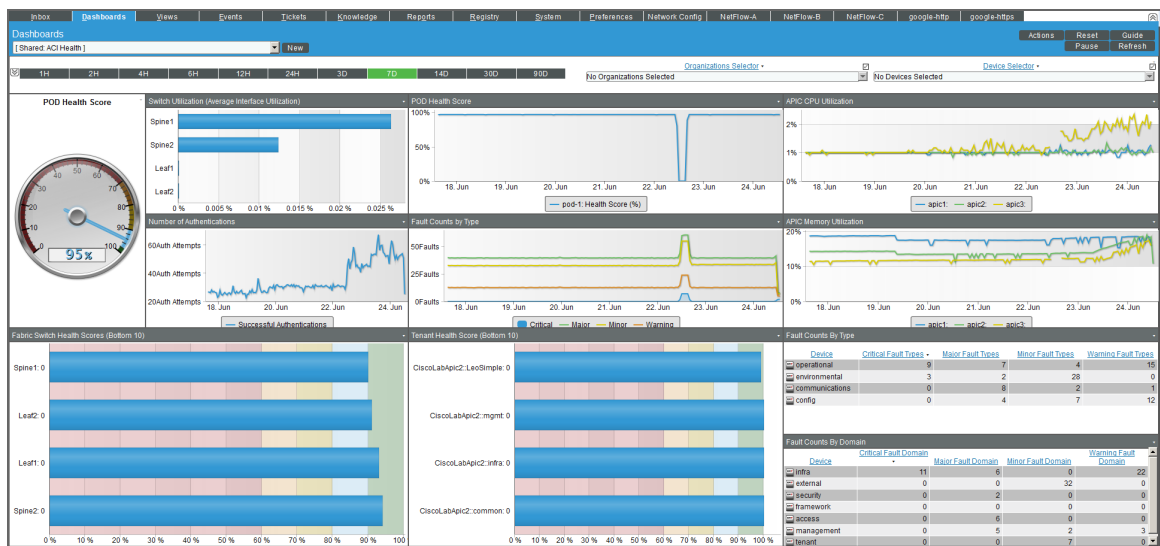
The ACI Application Dashboard displays the following widgets:

- **Context Quick Selector.** This widget allows the user to set the timespan for the dashboard.
- **SELECT AN APPLICATION.** This widget allows the user to select an Application Network Profile running on the Cisco ACI system (from a list of applications) to display in the dashboard.
- **Application Health Score (graph).** This widget displays a line graph that depicts the average Health Score for the selected Application Network Profile over time.
- **Application Health Score (gauge).** This widget displays a gauge that depicts the average Health Score for the selected application. The gauge is updated every five minutes.
- **Tenant Fault Counts by Type.** This widget displays the 10 tenants with the most faults, by fault type. The table displays a row for each type and four columns, one for each fault severity: Critical faults, major faults, minor faults, and warning faults.
- **Tenant Fault Counts by Domain.** This widget displays the 10 tenants with the most faults, by fault domain. The table displays a row for each domain and four columns, one for each fault severity: Critical faults, major faults, minor faults, and warning faults.
- **Endpoint Groups Health Score (Bottom 5).** This widget displays a bar graph that depicts the five Endpoint Groups with the lowest ACI Health Score. Each bar represents an Endpoint Group and displays the average health score in percent.
- **Virtual Machine CPU Usage (Top 5) (percent).** This widget displays a bar graph that depicts the five VMWare virtual machines (that host EPGs) with the highest average CPU usage. Each bar represents a virtual machine and displays the average CPU usage in percent.
- **Virtual Machine CPU Usage (Top 5) (mHz).** This widget displays a bar graph that depicts the five VMWare virtual machines (that host EPGs) with the highest average CPU usage. Each bar represents a virtual machine and displays the average CPU usage in mHz.
- **Virtual Machine Memory Usage (Top 5).** This widget displays a bar graph that depicts the five VMWare virtual machines (that host EPGs) with the highest average memory usage. Each bar represents a virtual machine and displays the average memory usage in percent.

- **Virtual Machine Network Usage (Top 5).** This widget displays a bar graph that depicts the five VMWare virtual machines (that host EPGs) with the highest average network usage. Each bar represents a virtual machine and displays the average network usage in KB/second.
- **Virtual Machine Disk Usage (Top 5).** This widget displays a bar graph that depicts the five VMWare virtual machines (that host EPGs) with the highest average disk usage. Each bar represents a virtual machine and displays the average disk usage in KB/second.

ACI Health Dashboard

The ACI Health dashboard provides an overview of the health of the ACI system.



The ACI Health dashboard displays the following widgets:

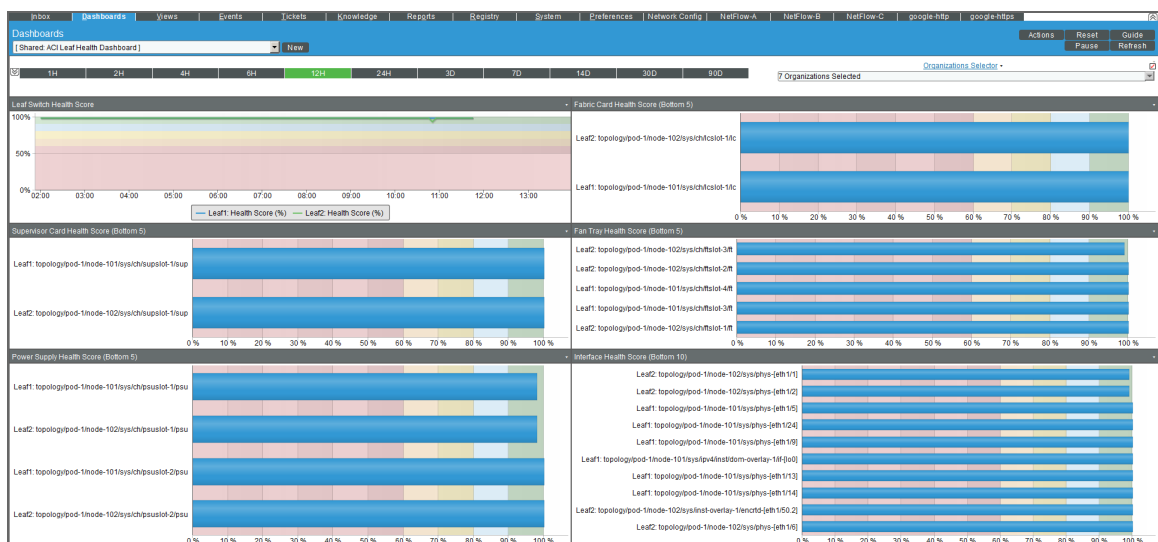
- **Context Quick Selector.** This widget allows the user to set the timespan for the dashboard.
- **Organization Selector.** This widget allows the user to specify the organization(s) to include in the dashboard.
- **Device Selector.** This widget allows the user to specify the device(s) to include in the dashboard. If the user selects one or more values in the Organization Selector widget, only devices from the selected organization (s) appear in the Device Selector.
- **Pod Health Score.** This widget displays a gauge that depicts the average Health Score for the full system under an ACI pod. The gauge is updated every five minutes.
- **Switch Utilization (Average interface Utilization).** This widget displays a bar graph that depicts the 10 switches with the highest average interface utilization. Each bar represents a switch (spine or leaf) and displays the average interface usage in percent.
- **Pod Health Score.** This widget displays a line graph that depicts the average Health Score for the full system under an ACI pod. The graph displays health in percent over time.



- **APIC CPU Utilization.** This widget displays a line graph that depicts the average CPU usage for each APIC in the ACI system. The graph displays a line for each APIC. Each line displays average CPU usage in percent over time.
- **Number of Authentications.** This widget displays a line graph that depicts the number of successful authentications to the cluster that hosts the APIC(s). The line graph displays the number of successful authentications over time.
- **Fault Counts by Type.** This widget displays a line graph that depicts the type of faults that have occurred on the cluster that hosts the APIC(s). The graph displays a line for each fault severity (critical faults, major faults, minor faults, and warning faults). Each line displays the number of faults over time.
- **APIC Memory Utilization.** This widget displays a line graph that depicts the average memory usage for each APIC in the ACI system. The graph displays a line for each APIC. Each line displays average memory usage in percent over time.
- **Fabric Switch Health Scores (Bottom 10).** This widget displays a bar graph that depicts the 10 switches (both spines and leaf) with the lowest health scores. Each bar represents a switch and displays health in percent.
- **Tenant Health Score (Bottom 10).** This widget displays a bar graph that depicts the 10 tenants with the lowest health scores. Each bar represents a tenant and displays health in percent.
- **Fault Counts by Type.** This widget displays the 10 devices with the most faults, by fault type. The table displays a row for each type and four columns, one for each fault severity: Critical faults, major faults, minor faults, and warning faults.
- **Fault Counts by Domain.** This widget displays the 10 devices with the most faults, by fault domain. The table displays a row for each domain and four columns, one for each fault severity: Critical faults, major faults, minor faults, and warning faults.

ACI Leaf Health Dashboard

The ACI Leaf Health dashboard provides an overview of the health of each leaf and its components.

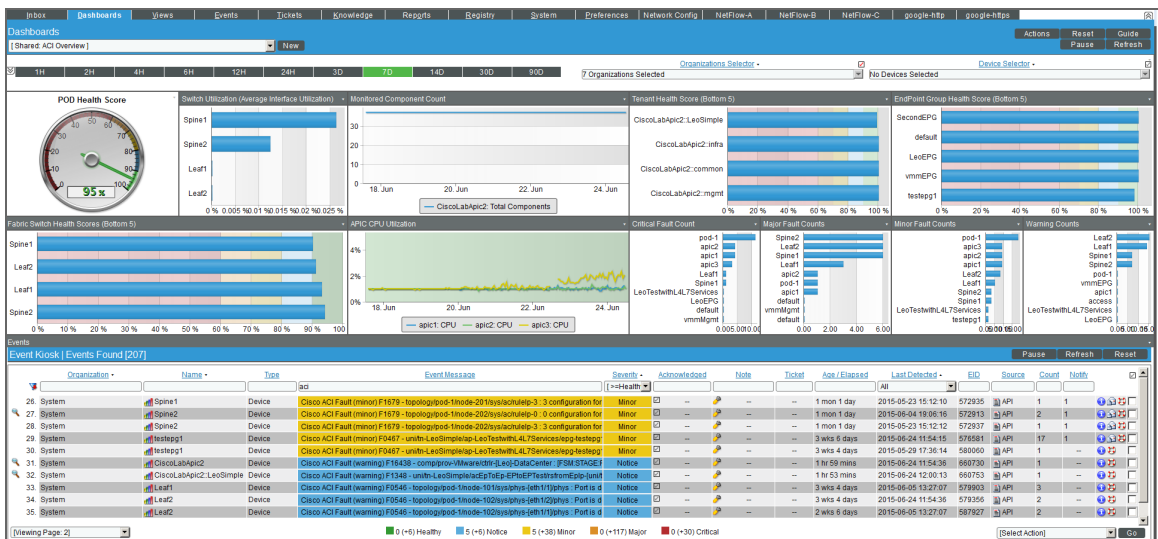


The ACI Leaf Health dashboard displays the following widgets:

- **Context Quick Selector.** This widget allows the user to set the timespan for the dashboard.
- **Organization Selector.** This widget allows the user to specify the organization(s) to include in the dashboard.
- **Leaf Switch Health Score.** This widget displays a line graph that depicts the Health Score for each leaf in the ACI system. The graph displays a line for each leaf switch. Each line displays health in percent over time.
- **Fabric Card Health Score (Bottom 5).** This widget displays a bar graph that depicts the five fabric cards (among all the leaf switches) with the lowest health scores. Each bar represents a fabric card and displays health in percent.
- **Supervisor Card Health Score (Bottom 5).** This widget displays a bar graph that depicts the five supervisor cards (among all the leaf switches) with the lowest health scores. Each bar represents a supervisor card and displays health in percent.
- **Fan Tray Health Score (Bottom 5).** This widget displays a bar graph that depicts the five fan trays (among all the leaf switches) with the lowest health scores. Each bar represents a fan tray and displays health in percent.
- **Power Supply Health Score (Bottom 5).** This widget displays a bar graph that depicts the five power supplies (among all the leaf switches) with the lowest health scores. Each bar represents a power supply and displays health in percent.
- **Interface Health Score (Bottom 10).** This widget displays a bar graph that depicts the 10 interfaces (among all the leaf switches) with the lowest health scores. Each bar represents an interface and displays health in percent.

ACI Overview Dashboard

The ACI Overview dashboard provides an overview of the status of the entire ACI system.

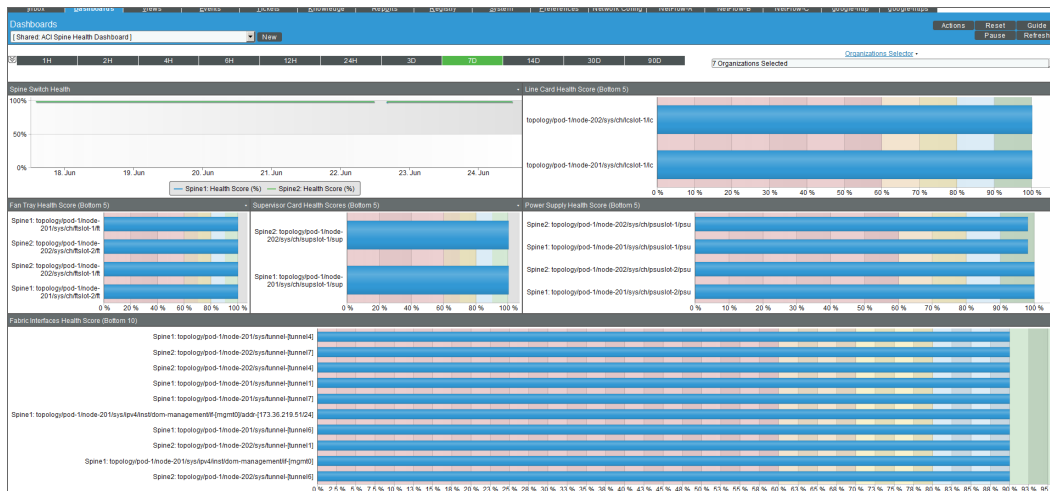


The ACI Health dashboard displays the following widgets:

- **Context Quick Selector.** This widget allows the user to set the timespan for the dashboard.
- **Organization Selector.** This widget allows the user to specify the organization(s) to include in the dashboard.
- **Device Selector.** This widget allows the user to specify the device(s) to include in the dashboard. If the user selects one or more values in the Organization Selector widget, only devices from the selected organization(s) appear in the Device Selector.
- **Pod Health Score.** This widget displays a gauge that depicts the average Health Score for the full system under an ACI pod. The gauge is updated every five minutes.
- **Switch Utilization (Average interface Utilization).** This widget displays a bar graph that depicts the 10 switches with the highest average interface utilization. Each bar represents a switch (spine or leaf) and displays the average interface usage in percent.
- **Monitored Component Count.** This widget displays a line graph that depicts the number of monitored components in the ACI system. The graph displays number of components over time.
- **Tenant Health Score (Bottom 5).** This widget displays a bar graph that depicts the five tenants with the lowest health scores. Each bar represents a tenant and displays health in percent.
- **Endpoint Group Health Score (Bottom 5).** This widget displays a bar graph that depicts the five endpoint groups with the lowest health scores. Each bar represents an endpoint group and displays health in percent.
- **Fabric Switch Health Scores (Bottom 5).** This widget displays a bar graph that depicts the five switches (both spines and leaf) with the lowest health scores. Each bar represents a switch and displays health in percent.
- **APIC CPU Utilization.** This widget displays a line graph that depicts the average CPU usage for each APIC in the ACI system. The graphs displays a line for each APIC. Each line displays average CPU usage in percent over time.
- **Critical Fault Count.** This widget displays a bar graph that depicts each part of the ACI system where a critical fault occurred. Each bar represents a component of the ACI system where a critical fault occurred and displays the number of critical faults.
- **Major Fault Count.** This widget displays a bar graph that depicts each part of the ACI system where a major fault occurred. Each bar represents a component of the ACI system where a major fault occurred and displays the number of major faults.
- **Minor Fault Count.** This widget displays a bar graph that depicts each part of the ACI system where a minor fault occurred. Each bar represents a component of the ACI system where a minor fault occurred and displays the number of minor faults.
- **Warning Fault Count.** This widget displays a bar graph that depicts each part of the ACI system where a warning fault occurred. Each bar represents a component of the ACI system where a warning fault occurred and displays the number of warning faults.
- **Event Kiosk.** This widget displays a list of all events associated with the ACI system. The interface is the same as that of the Events Console.

ACI Spine Health Dashboard

The ACI Spine Health dashboard provides an overview of the health of each spine and its components.

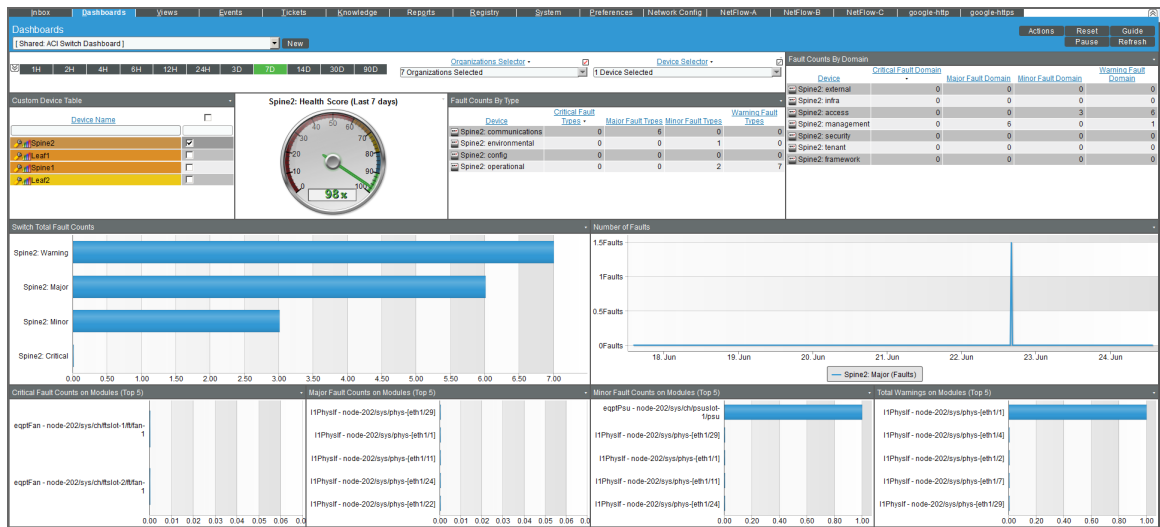


The ACI Spine Health dashboard displays the following widgets:

- **Context Quick Selector.** This widget allows the user to set the timespan for the dashboard.
- **Organization Selector.** This widget allows the user to specify the organization(s) to include in the dashboard.
- **Spine Switch Health Score.** This widget displays a line graph that depicts the Health Score for each spine in the ACI system. The graph displays a line for each spine switch. Each line displays health in percent over time.
- **Line Card Health Score (Bottom 5).** This widget displays a bar graph that depicts the five line cards (among all the spine switches) with the lowest health scores. Each bar represents a line card and displays health in percent.
- **Fan Tray Health Score (Bottom 5).** This widget displays a bar graph that depicts the five fan trays (among all the spine switches) with the lowest health scores. Each bar represents a fan tray and displays health in percent.
- **Supervisor Card Health Score (Bottom 5).** This widget displays a bar graph that depicts the five supervisor cards (among all the spine switches) with the lowest health scores. Each bar represents a supervisor card and displays health in percent.
- **Power Supply Health Score (Bottom 5).** This widget displays a bar graph that depicts the five power supplies (among all the spine switches) with the lowest health scores. Each bar represents a power supply and displays health in percent.
- **Interface Health Score (Bottom 10).** This widget displays a bar graph that depicts the 10 interfaces (among all the spine switches) with the lowest health scores. Each bar represents an interface and displays health in percent.

ACI Switch Dashboard

The ACI Switch dashboard provides an overview of the health of all the switches (spine and leaf) in the ACI system.



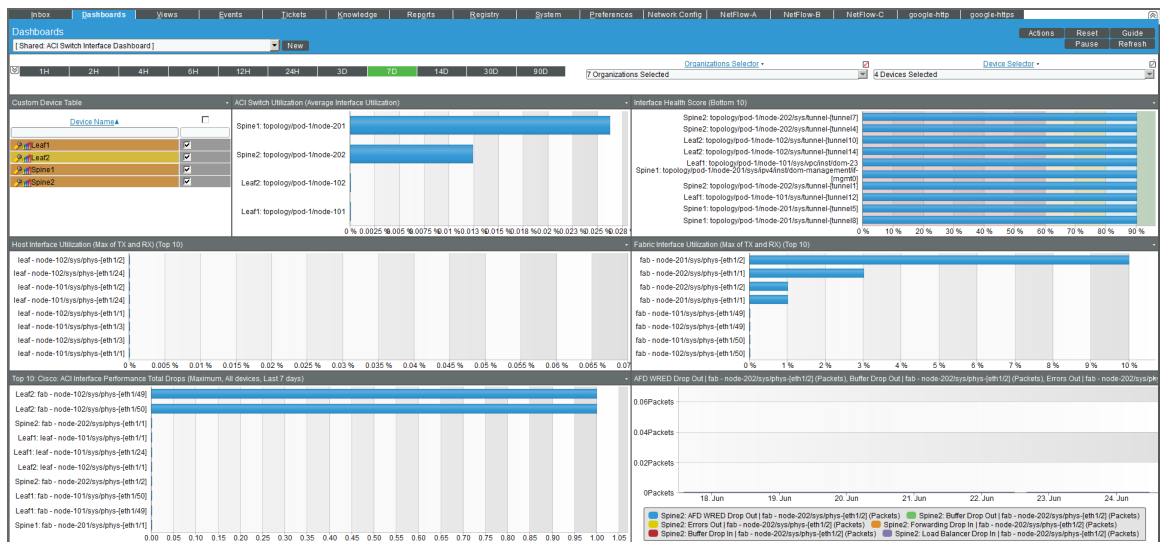
The ACI Switch dashboard displays the following widgets:

- **Context Quick Selector.** This widget allows the user to set the timespan for the dashboard.
- **Organization Selector.** This widget allows the user to specify the organization(s) to include in the dashboard.
- **Device Selector.** This widget allows the user to specify the device(s) to include in the dashboard. If the user selects one or more values in the Organization Selector widget, only devices from the selected organization(s) appear in the Device Selector.
- **Custom Device Table.** This widget displays a table that lists the spine switches and leaf switches in the ACI system. This widget allows the user to specify the switches to include in the dashboard.
- **Health Score (Last 7 days).** This widget displays a gauge that depicts the average Health Score for the previous seven days for the switch selected in the **Custom Device Table** widget. The gauge is updated every five minutes. You can view the health score for only one switch at a time.
- **Fault Counts by Type.** This widget displays a table that lists each switch and the type where faults occurred. The table displays a row for each switch/type and four columns, one for each fault severity: Critical faults, major faults, minor faults, and warning faults.
- **Fault Counts by Domain.** This widget displays a table that lists each switch and the domain where faults occurred. The table displays a row for each switch/domain and four columns, one for each fault severity: Critical faults, major faults, minor faults, and warning faults.
- **Switch Total Fault Counts.** This widget displays a bar graph that depicts each switch where a fault occurred, the severity of the fault, and the number of faults. Each bar represents a switch/fault severity and the number of times the fault occurred.
- **[Number of Faults].** This widget displays a line graph that depicts the average CPU usage for each APIC in the ACI system. The graph displays a line for each switch. Each line displays the total number of faults over time.

- **Critical Fault Count.** This widget displays a bar graph that depicts the five components of a switch where the most critical faults occurred. Each bar represents a component of a switch where a critical fault occurred and displays the number of critical faults.
- **Major Fault Count.** This widget displays a bar graph that depicts the five components of a switch where the most major faults occurred. Each bar represents component of a switch where a major fault occurred and displays the number of major faults.
- **Minor Fault Count.** This widget displays a bar graph that depicts the five components of a switch where the most minor faults occurred. Each bar represents a component of a switch where a minor fault occurred and displays the number of minor faults.
- **Warning Fault Count.** This widget displays a bar graph that depicts the five components of a switch where the most warning faults occurred. Each bar represents component of a switch where a warning fault occurred and displays the number of warning faults.

ACI Switch Interface Dashboard

The ACI Switch Interface dashboard provides an overview of the status of the interfaces on all the switches (spine and leaf) in the ACI system.



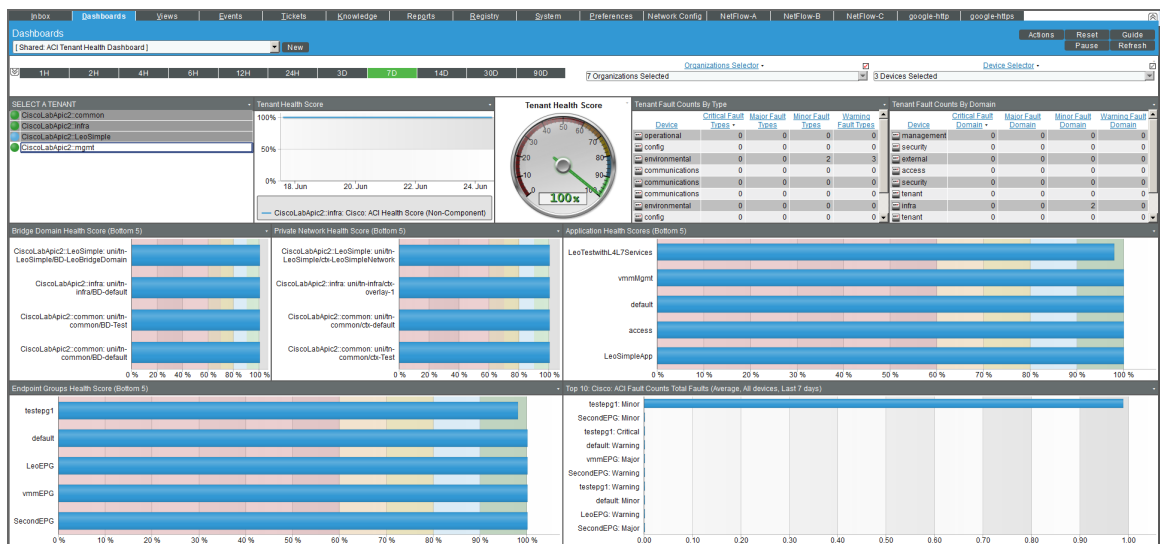
The ACI Switch Interface dashboard displays the following widgets:

- **Context Quick Selector.** This widget allows the user to set the timespan for the dashboard.
- **Organization Selector.** This widget allows the user to specify the organization(s) to include in the dashboard.
- **Device Selector.** This widget allows the user to specify the device(s) to include in the dashboard. If the user selects one or more values in the Organization Selector widget, only devices from the selected organization (s) appear in the Device Selector.

- **Custom Device Table.** This widget displays a table that lists the spine switches and leaf switches in the ACI system. This widget allows the user to specify the switches to include in the dashboard.
- **ACI Switch Utilization (Average Interface Utilization).** This widget displays a bar graph that displays the 10 switch interfaces with the highest utilization. Each bar represents an interface and displays utilization in percent.
- **Interface Health Score (Bottom 10).** This widget displays a bar graph that displays the 10 switch interfaces with the lowest health scores. Each bar represents an interface and displays health in percent.
- **Host Interface Utilization (Max of TX and RX) (Top 10).** This widget displays a bar graph that displays the 10 host-facing switch interfaces with the highest utilization. Each bar represents an interface and displays utilization in percent.
- **Fabric Interface Utilization (Max of TX and RX) (Top 10).** This widget displays a bar graph that displays the 10 fabric-facing switch interfaces with the highest utilization. Each bar represents an interface and displays utilization in percent.
- **Top 10: Cisco: ACI Interface Performance Total Drops (Maximum, All devices, Last <timespan>).** This widget displays a bar graph. The bar graph displays the 10 switch interfaces with the highest number of drops over the timespan. Each bar represents an interface and displays the total number of drops for the timespan.
- **Interface Drops and Errors (Top 5).** This widget displays a line graph that depicts drops and errors over time. The graph includes a line for each type of drop or error: SFD WRED Drop Out, Buffer Drop Out, Errors Out, Forward Drop In, Buffer Drop In, and Load Balancer Drop In. Each line displays the number of drops or errors over time.

ACI Tenant Health Dashboard

The ACI Tenant Health dashboard provides an overview of the status of a selected tenant in the ACI system.



The ACI Tenant Health dashboard displays the following widgets:

- **Context Quick Selector.** This widget allows the user to set the timespan for the dashboard.
- **Organization Selector.** This widget allows the user to specify the organization(s) to include in the dashboard.
- **Device Selector.** This widget allows the user to specify the device(s) to include in the dashboard. If the user selects one or more values in the Organization Selector widget, only devices from the selected organization (s) appear in the Device Selector.
- **SELECT A TENANT.** This widget displays a table that lists the tenants in the ACI system. This widget allows the user to specify the switches to include in the dashboard.
- **Tenant Health Score (graph).** This widget displays a line graph that depicts the average Health Score for one or more selected tenants over time. The graph includes a line for tenant. Each line displays health in percent over time.
- **Tenant Health Score (gauge).** This widget displays a gauge that depicts the average Health Score for one or more selected tenants. The gauge is updated every five minutes.
- **Tenant Fault Counts by Type.** This widget displays the 10 tenants with the most faults, by fault type. The table displays a row for each type and four columns, one for each fault severity: Critical faults, major faults, minor faults, and warning faults.
- **Tenant Fault Counts by Domain.** This widget displays the 10 tenants with the most faults, by fault domain. The table displays a row for each domain and four columns, one for each fault severity: Critical faults, major faults, minor faults, and warning faults.
- **Bridge Domain Health Score (Bottom 5).** This widget displays a bar graph that depicts the five bridge domains with the lowest ACI Health Score. Each bar represents a bridge domain and displays the average health score in percent.
- **Private Network Health Score (Bottom 5).** This widget displays a bar graph that depicts the five private networks with the lowest ACI Health Score. Each bar represents a private network and displays the average health score in percent.
- **Application Health Score (Bottom 5).** This widget displays a bar graph that depicts the five applications with the lowest ACI Health Score. Each bar represents an application and displays the average health score in percent.
- **Endpoint Groups Health Score (Bottom 5).** This widget displays a bar graph that depicts the five endpoint groups with the lowest ACI Health Score. Each bar represents an endpoint group and displays the average health score in percent.
- **Top 10: Cisco: ACI Fault Counts Total Faults (Average, All devices, Last <timespan>).** This widget displays a bar graph that depicts the ACI tenants with the highest number of total faults over the timespan. Each bar represents a tenant/fault severity and the number of times the fault occurred.

© 2003 - 2018, ScienceLogic, Inc.

All rights reserved.

LIMITATION OF LIABILITY AND GENERAL DISCLAIMER

ALL INFORMATION AVAILABLE IN THIS GUIDE IS PROVIDED "AS IS," WITHOUT WARRANTY OF ANY KIND, EITHER EXPRESS OR IMPLIED. SCIENCELOGIC™ AND ITS SUPPLIERS DISCLAIM ALL WARRANTIES, EXPRESS OR IMPLIED, INCLUDING, BUT NOT LIMITED TO, THE IMPLIED WARRANTIES OF MERCHANTABILITY, FITNESS FOR A PARTICULAR PURPOSE OR NON-INFRINGEMENT.

Although ScienceLogic™ has attempted to provide accurate information on this Site, information on this Site may contain inadvertent technical inaccuracies or typographical errors, and ScienceLogic™ assumes no responsibility for the accuracy of the information. Information may be changed or updated without notice. ScienceLogic™ may also make improvements and / or changes in the products or services described in this Site at any time without notice.

Copyrights and Trademarks

ScienceLogic, the ScienceLogic logo, and EM7 are trademarks of ScienceLogic, Inc. in the United States, other countries, or both.

Below is a list of trademarks and service marks that should be credited to ScienceLogic, Inc. The ® and ™ symbols reflect the trademark registration status in the U.S. Patent and Trademark Office and may not be appropriate for materials to be distributed outside the United States.

- ScienceLogic™
- EM7™ and em7™
- Simplify IT™
- Dynamic Application™
- Relational Infrastructure Management™

The absence of a product or service name, slogan or logo from this list does not constitute a waiver of ScienceLogic's trademark or other intellectual property rights concerning that name, slogan, or logo.

Please note that laws concerning use of trademarks or product names vary by country. Always consult a local attorney for additional guidance.

Other

If any provision of this agreement shall be unlawful, void, or for any reason unenforceable, then that provision shall be deemed severable from this agreement and shall not affect the validity and enforceability of any remaining provisions. This is the entire agreement between the parties relating to the matters contained herein.

In the U.S. and other jurisdictions, trademark owners have a duty to police the use of their marks. Therefore, if you become aware of any improper use of ScienceLogic Trademarks, including infringement or counterfeiting by third parties, report them to Science Logic's legal department immediately. Report as much detail as possible about the misuse, including the name of the party, contact information, and copies or photographs of the potential misuse to: legal@sciencelogic.com



800-SCI-LOGIC (1-800-724-5644)

International: +1-703-354-1010