



Monitoring Cisco UCS Manager

Cisco: UCS PowerPack version 106

Table of Contents

Introduction to the Cisco UCS Manager PowerPack	3
What is Cisco UCS Manager?	4
What Does the Cisco: UCS PowerPack Monitor?	4
Installing the Cisco: UCS PowerPack	4
Configuration and Discovery	6
Prerequisites for Monitoring Cisco UCS Manager	6
Configuring the UCS System	7
Creating a SOAP/XML Credential	9
Creating a SOAP/XML Credential in the Skylar One Classic User Interface	10
Discovering a UCS Manager	11
To create and run a discovery session that will discover a UCS Manager in the Skylar One classic user interface:	13
Viewing Component Devices	15
Availability for Component Devices	16
Relationships with Other Types of Component Devices	17

Chapter

1

Introduction to the Cisco UCS Manager PowerPack

Overview

This manual describes how to monitor Cisco Unified Computing System (UCS) Manager devices in Skylar One using the Dynamic Applications in the "Cisco: UCS" PowerPack.

This chapter covers the following topics:

<i>What is Cisco UCS Manager?</i>	4
<i>What Does the Cisco: UCS PowerPack Monitor?</i>	4
<i>Installing the Cisco: UCS PowerPack</i>	4

<p>NOTE: ScienceLogic provides this documentation for the convenience of ScienceLogic customers. Some of the configuration information contained herein pertains to third-party vendor software that is subject to change without notice to ScienceLogic. ScienceLogic makes every attempt to maintain accurate technical information and cannot be held responsible for defects or changes in third-party vendor software. There is no written or implied guarantee that information contained herein will work for all third-party variants. See the End User License Agreement (EULA) for more information.</p>

What is Cisco UCS Manager?

Cisco UCS Manager is a management system for all of the components in Cisco's Unified Computing System. Cisco UCS combines computing, network, and storage technologies, including fabric interconnects, blade servers, server chassis, and other components.

What Does the Cisco: UCS PowerPack Monitor?

To monitor Cisco UCS Manager using Skylar One, you must install the "Cisco: UCS" PowerPack. This PowerPack enables you to discover, model, and collect data about a UCS Manager and its component devices.

The "Cisco: UCS" PowerPack includes:

- Dynamic Applications that enable Skylar One to discover, model, and monitor Cisco UCS Manager devices
- Event policies that are triggered when Cisco UCS Manager component devices meet certain status criteria
- Device classes for each type of Cisco UCS Manager component device monitored
- A sample credential for discovering Cisco UCS Manager component devices

Installing the Cisco: UCS PowerPack

Before completing the steps in this manual, you must import and install the latest version of the "Cisco: UCS" PowerPack.

TIP: By default, installing a new version of a PowerPack overwrites all content from a previous version of that PowerPack that has already been installed on the target system. You can use the **Enable Selective PowerPack Field Protection** setting in the **Behavior Settings** page (System > Settings > Behavior) to prevent new PowerPacks from overwriting local changes for some commonly customized fields. For more information, see the section on [Global Settings](#).

NOTE: For details on upgrading Skylar One, see the relevant [Skylar One Platform Release Notes](#).

To download and install the PowerPack:

1. Search for and download the PowerPack from the **PowerPacks** page at the [ScienceLogic Support Center](#) (Skylar One > PowerPacks, login required).
2. In Skylar One, go to the **PowerPacks** page (System > Manage > PowerPacks).

3. Click the **[Actions]** button and choose *Import PowerPack*. The **Import PowerPack** dialog box appears.
4. Click **[Browse]** and navigate to the PowerPack file from step 1.
5. Select the PowerPack file and click **[Import]**. The **PowerPack Installer** modal displays a list of the PowerPack contents.
6. Click **[Install]**. The PowerPack is added to the **PowerPacks** page.

NOTE: If you exit the **PowerPack Installer** modal without installing the imported PowerPack, the imported PowerPack will not appear in the **PowerPacks** page. However, the imported PowerPack will appear in the **Imported PowerPacks** modal. This page appears when you click the **[Actions]** menu and select *Install PowerPack*.

Chapter

2

Configuration and Discovery

Overview

The following sections describe how to configure and discover a Cisco Unified Computing System (UCS) Manager and component devices for monitoring by Skylar One using the "Cisco: UCS" PowerPack.

This chapter covers the following topics:

<i>Prerequisites for Monitoring Cisco UCS Manager</i>	<i>6</i>
<i>Configuring the UCS System</i>	<i>7</i>
<i>Creating a SOAP/XML Credential</i>	<i>9</i>
<i>Discovering a UCS Manager</i>	<i>11</i>
<i>Viewing Component Devices</i>	<i>15</i>

Prerequisites for Monitoring Cisco UCS Manager

To use the Dynamic Component Mapping Dynamic Applications included in the "Cisco: UCS" PowerPack, you must log in to the UCS Manager user interface and create a user account that Skylar One can use to access the UCS web service.

When the Dynamic Component Mapping Dynamic Applications are aligned to the UCS Manager, Skylar One will collect information about all the components in the UCS system, such as UCS Chassis and Blades. Skylar One will then create a device record for each component and automatically align other Dynamic Applications from the "Cisco: UCS" PowerPack to each component device.

NOTE: Each component device created by Skylar One is included in the calculations for collector group capacity. You should check that the collector group you will use to monitor the UCS Manager has enough capacity for all components in the UCS system. For more information about collector capacity, see the *System Administration* manual.

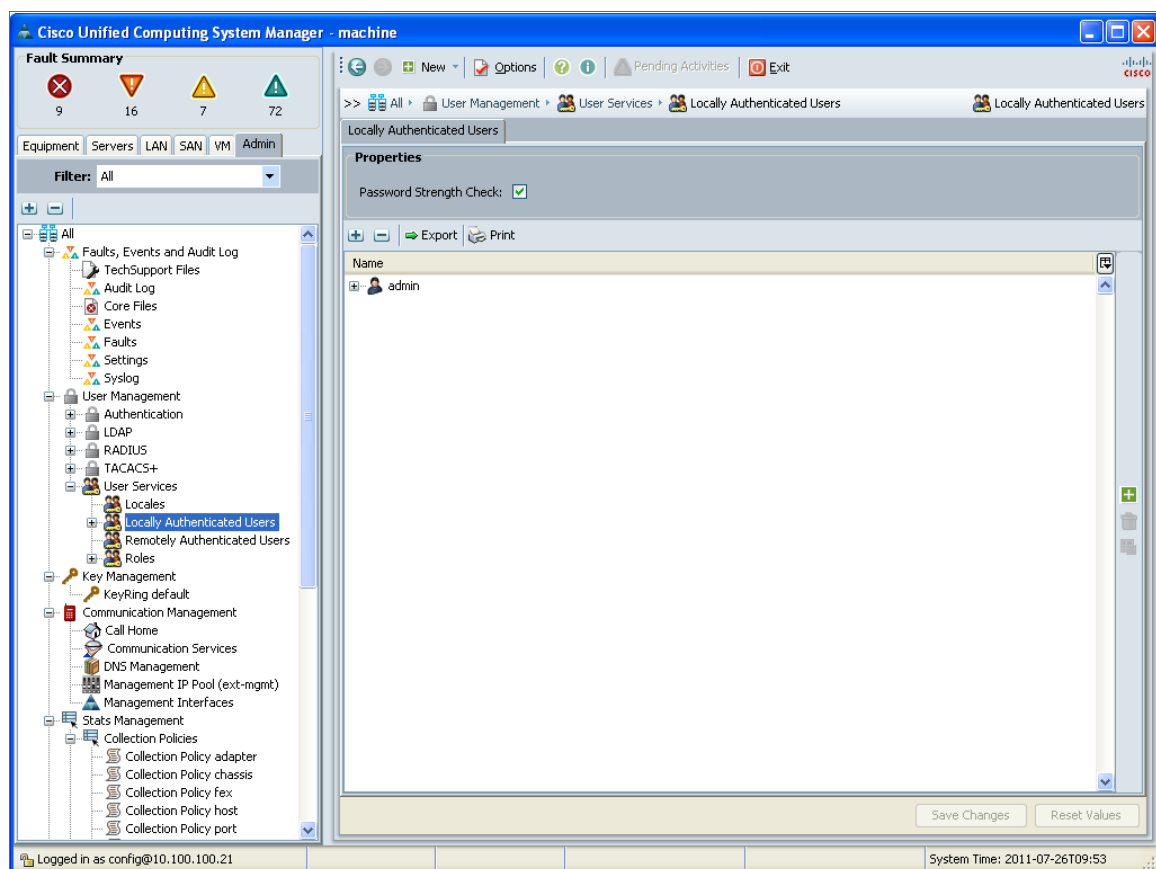
Configuring the UCS System

To configure a UCS system for monitoring by Skylar One, you must:

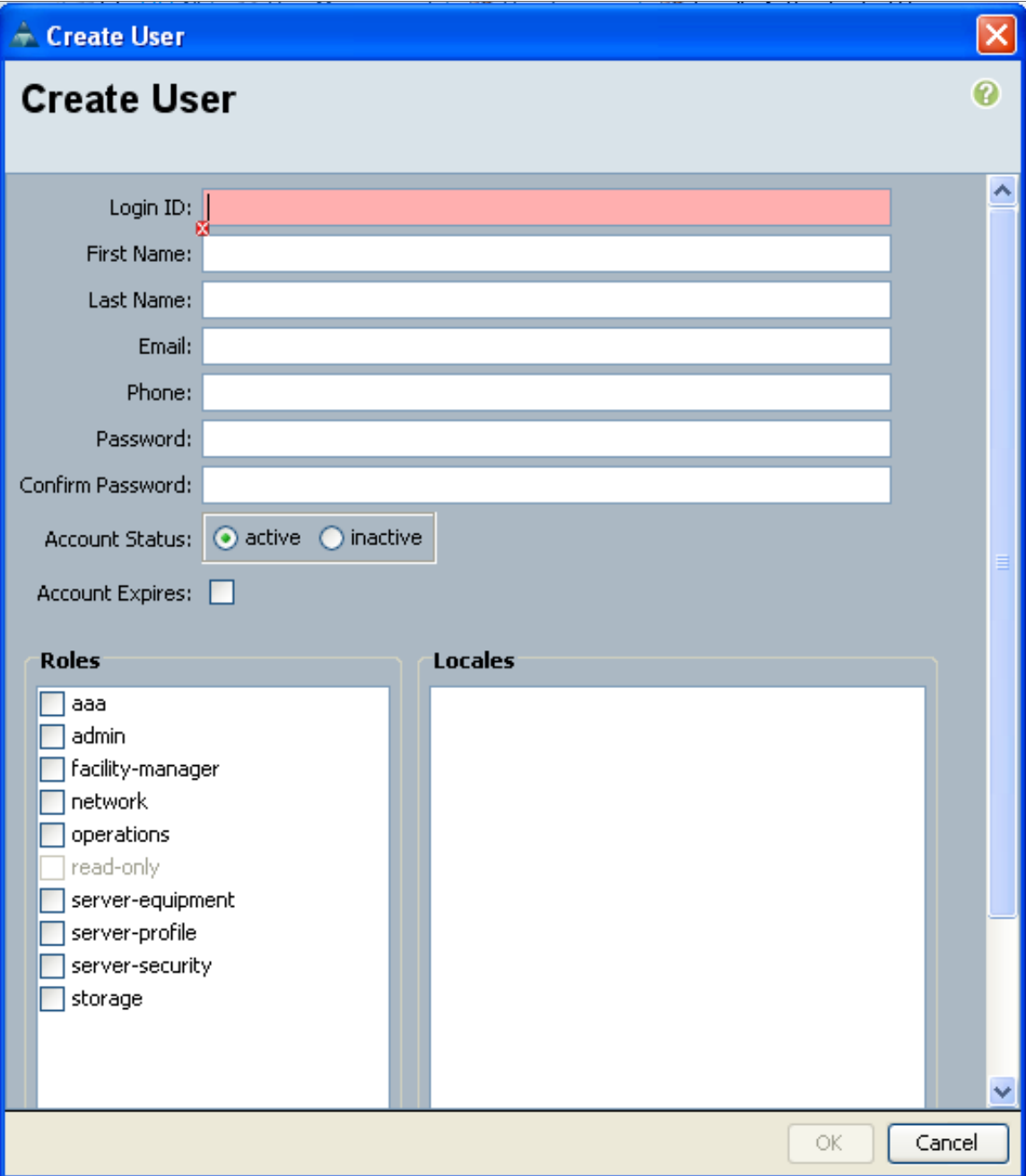
- Create a user account in UCS that Skylar One can use to access the UCS web service
- Enable the CIM XML service

Perform the following steps to complete these tasks:

1. Log in to the UCS Manager user interface as an administrator.
2. At the top of the left pane, click the **[Admin]** tab.
3. In the left pane, go to All > User Management > User Services > Locally Authenticated Users. The **Locally Authenticated Users** page appears in the right pane:



4. Click the green plus icon on the right side of the **Locally Authenticated Users** page. The **Create User** window appears:



The **Create User** dialog box is shown with a blue title bar and a light gray background. It contains several input fields and a list of roles. The **Login ID** field is highlighted with a red border and has a red 'x' icon to its left. The **Account Status** section has two radio buttons: **active** (selected) and **inactive**. The **Account Expires** checkbox is unchecked. The **Roles** list includes: **aaa**, **admin**, **facility-manager**, **network**, **operations**, **read-only**, **server-equipment**, **server-profile**, **server-security**, and **storage**. The **Locales** list is empty. The dialog has **OK** and **Cancel** buttons at the bottom right.

Create User

Create User

Login ID:

First Name:

Last Name:

Email:

Phone:

Password:

Confirm Password:

Account Status: ☒ active ☐ inactive

Account Expires: ☐

Roles

- ☐ aaa
- ☐ admin
- ☐ facility-manager
- ☐ network
- ☐ operations
- ☐ read-only
- ☐ server-equipment
- ☐ server-profile
- ☐ server-security
- ☐ storage

Locales

5. Supply values in the following fields:
 - **Login ID.** Enter a username for the user.
 - **Password.** Enter a password for the user.
 - **Confirm Password.** Re-enter the password you entered in the **Password** field.
 - **Account Status.** Select **active**.

- **Account Expires.** Make sure that this checkbox is not selected.
 - **Roles.** To create a read-only user, do not select any checkboxes.
6. Click the **[OK]** button, and then click the **[OK]** button in the confirmation pop-up window.
 7. In the left pane of the UCS Manager GUI, go to **All > Communication Management > Communication Services**. The **Communication Services** page appears in the right pane.
 8. In the **Admin State** field in the **CIM XML** section, select **Enabled**.

NOTE: Older versions of the UCS software do not include the option to disable the CIM XML service. If the option to enable/disable the CIM XML service does not appear, the service is already enabled.

9. Click the **[Save Changes]** button.

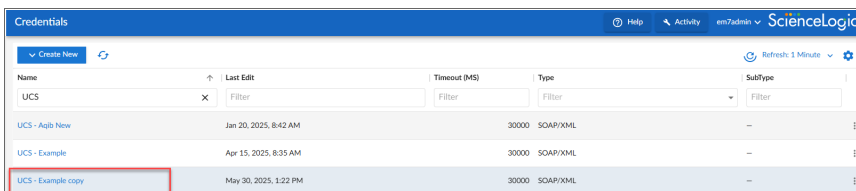
NOTE: When blade servers are replaced in a UCS chassis, and the old blade servers are not properly decommissioned, UCS Manager does not assign new Internal IDs to the new blade servers when they are inserted in the chassis. Instead, UCS Manager assigns an Internal ID of "none" to the new blade servers. This does not cause an error in Skylar One if it occurs with only a single blade; however, if more than one blade that you are monitoring is replaced without being decommissioned, multiple blades will have the same Internal ID of "none", which in turn can cause blades to appear under the incorrect chassis or not appear at all in Skylar One. If this occurs, decommission the affected blades and then reinsert them. For more information, see the section on "Guidelines for Removing and Decommissioning Blade Servers" in the [Cisco UCS documentation](#).

Creating a SOAP/XML Credential

To configure Skylar One to monitor Cisco UCS Manager, you must first create a SOAP/XML credential. This credential allows the Dynamic Applications in the "Cisco: UCS Manager" PowerPack to communicate with Skylar One. An example SOAP/XML credential that you can edit for your own use is included in the PowerPack.

To create a SOAP/XML credential:

1. Go to the **Credentials** page (Manage > Credentials).
2. Locate the "UCS - Example" credential, then click its **[Actions]** icon (⋮) and select **Duplicate** from the drop-down field. The "UCS - Example copy" credential appears.



Name	Last Edit	Timeout (MS)	Type	Subtype
UCS - Aqib New	Jan 20, 2025, 8:42 AM	30000	SOAP/XML	—
UCS - Example	Apr 15, 2025, 8:35 AM	30000	SOAP/XML	—
UCS - Example copy	May 30, 2025, 1:22 PM	30000	SOAP/XML	—

3. Click the **[Action]** icon (⋮) for the "UCS - Example copy" credential and then select *Edit*. The **Edit Credential** page appears.


The screenshot shows the 'Edit Credential' dialog box. The left pane contains the following fields: Name (UCS - Example copy), All Organizations (toggle on), Timeout (30000), Current Encoding (application/soap+xml), Method (POST), HTTP Version (http/1.1), URL (https://%D/nuova), HTTP Auth User, Proxy Hostname/IP, Proxy User, Embedded Password [%P], and four Embed Value [%1] to [%4] fields. It also has an HTTP Headers section with an 'Add Header' button and a CURL Options section with a 'Select Option' dropdown. The right pane contains the 'Credential Tester' section with a 'Select Credential test' dropdown, a 'Select Collector' dropdown (CUG | abhishah-dev-151: 10.2.21.151), and a field for 'IP or Hostname to test' with a 'Test Connection' button. A 'Close' button is at the bottom right of the dialog.

4. Enter values in the following fields:
 - **Name.** Type a new name for the credential.
 - **All Organizations.** Toggle on (blue) to align the credential to all organizations, or toggle off (gray) and then select one or more specific organizations from the **Select the organizations the credential belongs to** drop-down field to align the credential with those specific organizations.
 - **Timeout.** Keep the default.
 - **URL.** Keep the default value of https://%D/nuova.
 - **Embed Value [%1].** Type the username for the user account that you configured in the UCS Manager.
 - **Embed Password [%P].** Type the password for the user account that you configured in the UCS Manager.
5. Click **[Save & Close]** to update your credential.

Creating a SOAP/XML Credential in the Skylar One Classic User Interface

To use the Dynamic Applications in the "Cisco: UCS" PowerPack, you must configure a SOAP/XML credential for the UCS Manager web service. The "Cisco: UCS" PowerPack includes a template for a SOAP/XML credential that you can edit for use with your UCS system.

To create a new UCS credential using the example credential:

1. Go to the **Credential Management** page (System > Manage > Credentials).
2. Click the wrench icon () for the "UCS - Example" credential. The **Credential Editor** modal window appears.
3. Supply values in the following fields:
 - **Profile Name**. Type a new name for the credential.
 - **URL**. Keep the default value: **https://%D/nuova**
 - **Embed Value [%1]**. Type the username for the user account that you configured in the UCS Manager.

NOTE: If your user account does not use the default UCS Manager authentication realm, then you must prefix the username entered in this field with the authentication realm name for that user. In this scenario, the username should be in the following format: `ucs-[realm name]\[username]`.

For example, if your UCS Manager username is "EM7admin" and it is authenticated in the "Local" realm (i.e., "Local" is the realm in which the user "EM7admin" is authenticated), you would enter the following value in this field:


```
ucs-Local\EM7admin
```

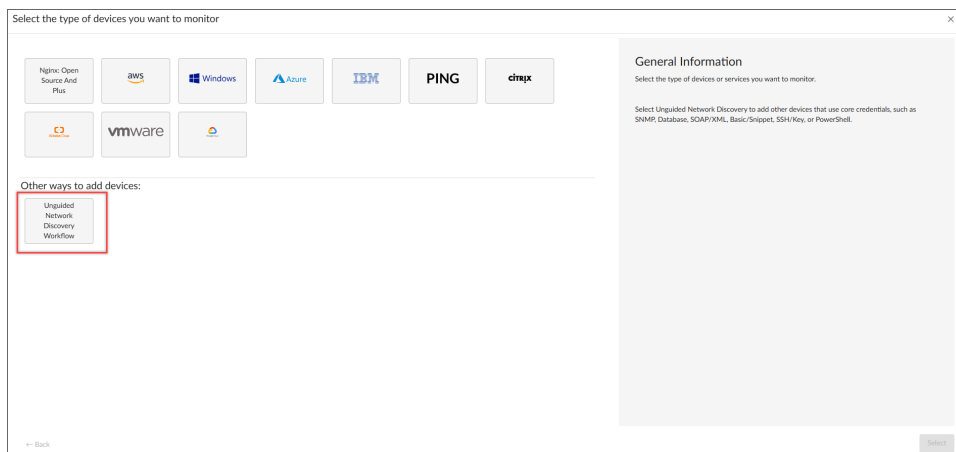
UCS Manager authentication realm names are case-sensitive.

- **Embedded Password [%P]**. Type the password for the user account that you configured in the UCS Manager.
4. Click the **[Save As]** button.

Discovering a UCS Manager

To create and run a discovery session that will discover a UCS Manager:

1. Go to the **Devices** page () or the **Discovery Session** page (Devices > Discovery Sessions) and click the **[Add Devices]** button.
2. Click the **[Unguided Network Discovery Workflow]** button. Additional information about that requirements for discovery appears in the **General Information** pane to the right.



3. Click **[Select]**. The **Add Devices** page appears.
4. Complete the following fields:
 - **Discovery Session Name**. Type a unique name for this discovery session. This name is displayed in the list of discovery sessions on the **[Discovery Session]** tab.
 - **Description**. Optional. Type a short description of the discovery session. You can use the test in this description to search for the discovery session on the **[Discovery Session]** tab.
 - **Select the organization to add discovered devices to**. Select the name of the organization to which you want to add the discovered devices.
5. Click **[Next]**. The **Credentials** page of the **Add Devices** wizard appears.
6. On the **Credentials** page, locate and select the SOAP/XML credential you created for UCS Manager appliances.
7. Click **[Next]**. The **Discovery Session** page of the **Add Devices** wizard appears.
8. Complete the following fields:
 - **List of IP/Hostnames**. Type the IP address for the UCS Manager appliance.
 - **Which collector will monitor these devices?**. Required. Select an existing collector to monitor the discovered devices.
 - **Run after save**. Select this option to run this discovery session as soon as you save the session.
 - **Advanced options**. Click the down arrow (▼) to complete the following fields:
 - **Discover Non-SNMP**. Enable this setting.
 - **Model Devices**. Enable this setting.
 - **Select Device Template**. If you configured a UCS Manager device template, select it here. Otherwise, leave the default selection.
9. If you enabled the **Run after save** option, click the **[Save and Run]** button. The discovery session will run and the **Discovery Logs** page will display any relevant log messages. If the discovery session locates and adds any devices, the **Discovery Logs** page will include a link to the **Device Investigator** page for the discovered device.

10. If you did not enable the **Run after save** option, click the **[Save and Close]** button. The **Discovery Session** page (Devices > Discovery Sessions) will display the new discovery session.

To create and run a discovery session that will discover a UCS Manager in the Skylar One classic user interface:

1. Go to the **Discovery Control Panel** page (System > Manage > Classic Discovery or System > Manage > Discovery in the classic user interface).
2. Click the **[Create]** button to create a new discovery session. The **Discovery Session Editor** window appears.
3. Enter values in the following fields:
 - **IP Address Discovery List.** Enter the IP address for the UCS Manager.
 - **SNMP Credentials.** UCS Manager does not support SNMP. Do not select any credentials in this field.
 - **Other Credentials.** Select the Cisco UCS credential you created.
 - **Initial Scan Level.** Select **5. Deep Discovery**. The *Cisco: UCS* PowerPack includes a "UCS Manager" device class. The "UCS Manager" device class is a **Non-SNMP** device class that is aligned only during deep discovery. If you do not select **5. Deep Discovery** in this field, the UCS Manager will be discovered and assigned a device class for a Linux pingable device.
 - **Detection Method & Port.** Select **443 - HTTPS**. You can select additional ports, but must include port 443 - HTTPS.
 - **Discover Non-SNMP.** Because UCS Manager does not support SNMP, you must select this checkbox.
4. Optionally, you can enter values in the other fields on this page. For more information about the other fields on this page, see the **Discovery & Credentials** manual.
5. Click the **[Save]** button and then close the **Discovery Session Editor** window.
6. The discovery session you created will display at the top of the **Discovery Control Panel** page. Click its lightning-bolt icon (⚡) to run the discovery session.
7. The **Discovery Session** window appears.

NOTE: After the discovery session completes, ScienceLogic recommends running the discovery session a second time to ensure that the "Cisco: UCS Cluster Information" Dynamic Application aligns with the UCS Manager root device.


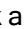
8. When the UCS Manager is discovered, click its device icon (🖥️) to view the **Device Properties** page for the UCS Manager server.

To verify that Skylar One has automatically aligned the correct Dynamic Applications during discovery:

NOTE: It can take several minutes after discovery for Dynamic Applications to display on the **Dynamic Application Collections** page. If the listed Dynamic Applications do not display on this page, try clicking the **[Reset]** button.

1. From the **Device Properties** page for the UCS Manager, click the **[Collections]** tab. The **Dynamic Application Collections** page appears.
2. The following Dynamic Applications should display in the list of Dynamic Applications aligned to the UCS Manager:
 - "Cisco: UCS Chassis Discovery"
 - "Cisco: UCS Compute Rack Unit Discovery"
 - "Cisco: UCS Fabric Discovery"
 - "Cisco: UCS FEX Discovery"
 - "Cisco: UCS Root Cache"
 - "Cisco: UCS Cluster Information"

If the listed Dynamic Applications have not been automatically aligned, you can align them manually. To do so:

1. For the "Cisco: UCS Root Cache" Dynamic Application, click the **[Action]** button in the **Dynamic Application Collections** page of the device and then select *Add Dynamic Application* from the menu. The **Dynamic Application Alignment** page appears.
2. In the **Dynamic Applications** field, select *Cisco: UCS Root Cache*.
3. In the **Credentials** field, select the SOAP/XML credential you configured for the UCS Manager.
4. Click the **[Save]** button.
5. Repeat steps 1-4 for each of the following Dynamic Applications:
 - Cisco: UCS Chassis Discovery
 - Cisco: UCS Compute Rack Unit Discovery
 - Cisco: UCS Fabric Discovery
 - Cisco: UCS FEX Discovery
 - Cisco: UCS Cluster Information
6. After aligning the Dynamic Applications, click the **[Reset]** button and then click the plus icon (+) for the Dynamic Application. If collection for the Dynamic Application was successful, the graph icons () for the Dynamic Application are enabled.
7. Click a graph icon () to view the collected data. The **Configuration Report** page will display the number of components of each type and the total number of components managed by the device.

NOTE: In addition to the Dynamic Applications that might need to be manually aligned to the UCS Manager, you can also opt to manually align the "Cisco: UCS Fault Configuration" Dynamic Application to UCS C-Series Rack Mount Server component devices. Doing so allows fault alerts to appear in the device log for those rack units.

Viewing Component Devices

When Skylar One performs collection for the "UCS Chassis Discovery" and "UCS Fabric Discovery" Dynamic Applications, Skylar One will create component devices for the components in the UCS system and align other Dynamic Applications to those component devices. Some of the Dynamic Applications aligned to the component devices will also be used to create additional component devices. All component devices display on the **Device Manager** page just like devices discovered using the ScienceLogic discovery process.

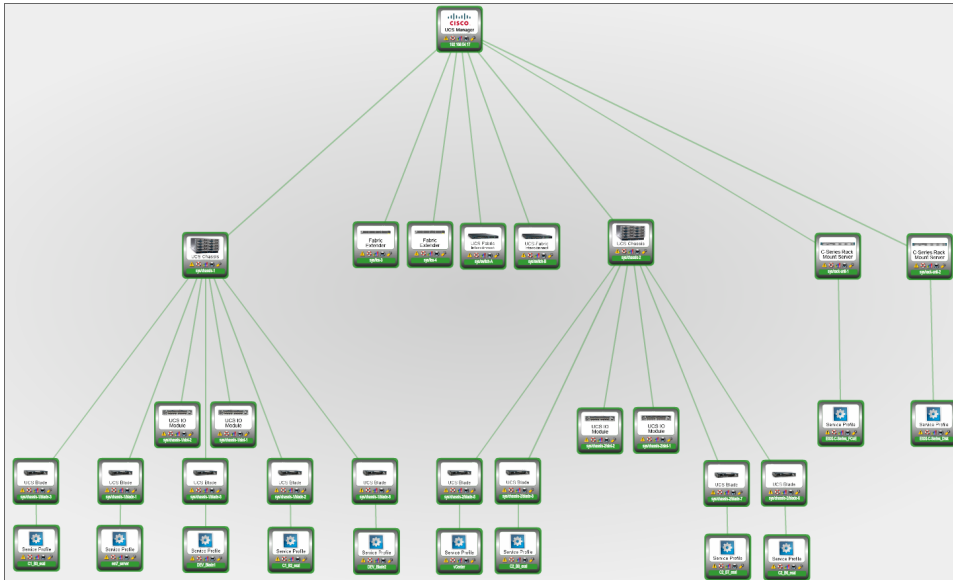
NOTE: It can take several minutes after initial collection of the "UCS Chassis Discovery" and "UCS Fabric Discovery" Dynamic Applications for all component devices to be discovered.

In addition to the **Device Manager** page, you can view the UCS Manager and all associated component devices in the following places in Skylar One:

- The **Device Components** page (Devices > Device Components) displays a list of all root devices and component devices discovered by Skylar One. The **Device Components** page displays all root devices and component devices in an indented view, so you can easily view the hierarchy and relationships between child devices, parent devices, and root devices. To view the component devices associated with a UCS Manager, find the UCS Manager and select its plus icon (+):

Device Name	IP Address	Device Category	Device Class / Sub-class	DID	System	Organization	Current State	Collection Group	Collection State
192.168.54.17	192.168.54.17	Servers	Cisco Systems UCS Manager	2	System		Healthy	CUG	Active
syschassis-1	--	Chassis	Cisco Systems UCS Chassis	3	System		Healthy	CUG	Active
syschassis-1blade-1	--	RackUnit	Cisco Systems UCS Blade	12	System		Healthy	CUG	Active
syschassis-1blade-2	--	RackUnit	Cisco Systems UCS Blade	14	System		Healthy	CUG	Active
syschassis-1blade-3	--	RackUnit	Cisco Systems UCS Blade	11	System		Healthy	CUG	Active
syschassis-1blade-4	--	RackUnit	Cisco Systems UCS Blade	13	System		Healthy	CUG	Active
syschassis-1blade-5	--	RackUnit	Cisco Systems UCS Blade	15	System		Healthy	CUG	Active
syschassis-1blade-6	--	Modules	Cisco Systems UCS IO Module	17	System		Healthy	CUG	Active
syschassis-1blade-7	--	Modules	Cisco Systems UCS IO Module	16	System		Healthy	CUG	Active
syschassis-2	--	Chassis	Cisco Systems UCS Chassis	4	System		Healthy	CUG	Active
sysflex-3	--	Modules	Cisco Systems UCS Fabric Extender	10	System		Healthy	CUG	Active
sysflex-4	--	Modules	Cisco Systems UCS Fabric Extender	9	System		Healthy	CUG	Active
sysrack-unit-1	--	RackUnit	Cisco Systems UCS C-Series Rack Mount	7	System		Healthy	CUG	Active
ESW-C-Series_FCode	--	Utility	Cisco Systems UCS Service Profile	24	System		Healthy	CUG	Active
sysrack-unit-2	--	RackUnit	Cisco Systems UCS C-Series Rack Mount	8	System		Healthy	CUG	Active
sysswitch-A	--	FabricInterconn	Cisco Systems UCS Fabric Interconnect	5	System		Healthy	CUG	Active
sysswitch-B	--	FabricInterconn	Cisco Systems UCS Fabric Interconnect	6	System		Healthy	CUG	Active

- The **Component Map** page (Classic Maps > Device Maps > Components) allows you to view devices by root node and view the relationships between root nodes, parent components, and child components in a map. This makes it easy to visualize and manage root nodes and their components. Skylar One automatically updates the **Component Map** as new component devices are discovered. Skylar One also updates each map with the latest status and event information. To view the map for a UCS Manager, go to Classic Maps > Device Maps > Components and select the map from the list in the left NavBar. To learn more about the **Component Map** page, see the **Views** manual.



Availability for Component Devices

The Dynamic Applications that discover the component devices in a UCS system include collection objects that define the availability status of those component devices.

The following types of component devices are considered unavailable if the UCS system does not include information about those components in the appropriate response:

- Blade
- Chassis
- Compute Rack Unit
- Fabric Extender
- Fabric Interconnect
- IO Module
- Service Profile

Relationships with Other Types of Component Devices

In addition to the parent/child relationships between component devices, the Dynamic Applications in the "Cisco: UCS" PowerPack automatically create relationships between the following Cisco UCS component devices:

- UCS Blades and UCS IO Modules
- UCS Compute Rack Units and UCS Fabric Extenders
- UCS Fabric Interconnects and UCS Fabric Extenders
- UCS Fabric Interconnects and UCS IO Modules

Additionally, Skylar One can automatically build relationships between Cisco UCS component devices and other associated devices. If you discover one or more of the following:

- A Cisco Hyperflex cluster using the Dynamic Applications in the "Cisco: Hyperflex" PowerPack
- A Cisco Nexus switch using the Dynamic Applications in the "Cisco Base Pack" PowerPack
- An EMC VNX LUN using the Dynamic Applications in the "EMC: VNX" PowerPack
- An EMC XtremIO LUN using the Dynamic Applications in the "Dell EMC: XtremIO" PowerPack
- A NetApp device using the Dynamic Applications in the "NetApp Base Pack" PowerPack
- A vCenter device using the Dynamic Applications in the "VMware: vSphere Base Pack" PowerPack

Skylar One will automatically create relationships between the following types of component devices, where appropriate:

- Cisco Hyperflex clusters and UCS Rack Servers
- Cisco Nexus switches and UCS Fabric Interconnects
- EMC VNX LUNs and UCS Service Profiles
- EMC XtremIO LUNs and UCS Service Profiles
- NetApp LUNs and UCS Service Profiles
- NetApp Volumes and UCS Service Profiles
- VMware Hosts and UCS Service Profiles

© 2003 - 2025, ScienceLogic, Inc.

All rights reserved.

ScienceLogic™, the ScienceLogic logo, and ScienceLogic's product and service names are trademarks or service marks of ScienceLogic, Inc. and its affiliates. Use of ScienceLogic's trademarks or service marks without permission is prohibited.

ALL INFORMATION AVAILABLE IN THIS GUIDE IS PROVIDED "AS IS," WITHOUT WARRANTY OF ANY KIND, EITHER EXPRESS OR IMPLIED. SCIENCELOGIC™ AND ITS SUPPLIERS DISCLAIM ALL WARRANTIES, EXPRESS OR IMPLIED, INCLUDING, BUT NOT LIMITED TO, THE IMPLIED WARRANTIES OF MERCHANTABILITY, FITNESS FOR A PARTICULAR PURPOSE OR NON-INFRINGEMENT.

Although ScienceLogic™ has attempted to provide accurate information herein, the information provided in this document may contain inadvertent technical inaccuracies or typographical errors, and ScienceLogic™ assumes no responsibility for the accuracy of the information. Information may be changed or updated without notice. ScienceLogic™ may also make improvements and / or changes in the products or services described herein at any time without notice.



800-SCI-LOGIC (1-800-724-5644)

International: +1-703-354-1010