



Monitoring Nutanix

Nutanix: Base Pack PowerPack version 103

Table of Contents

Introduction	3
What is Nutanix?	3
What Does the Nutanix Base Pack PowerPack Monitor?	4
Installing the Nutanix PowerPack	4
Configuration and Discovery	6
Configuring the Nutanix Credentials	6
Discovering Nutanix Systems	7
Verifying Discovery and Dynamic Application Alignment	9
Viewing Nutanix Component Devices	10
Dashboards	12
Nutanix: Cluster Summary	13
Nutanix: Container Performance	14
Device Dashboards	15
Nutanix Cluster Dashboard	15
Nutanix CVM Dashboard	16
Nutanix Hard Disk Dashboard	17
Nutanix Nodes/Hypervisor Dashboard	18
Nutanix Storage Container Dashboard	19
Nutanix Storage Pool Dashboard	20
Nutanix Workload VM Dashboard	21

Chapter

1

Introduction

Overview

This manual describes how to monitor Nutanix systems and their components in SL1 using the *Nutanix Base Pack PowerPack*.

The following sections provide an overview of Nutanix and the *Nutanix Base Pack PowerPack*:

<i>What is Nutanix?</i>	3
<i>What Does the Nutanix Base Pack PowerPack Monitor?</i>	4
<i>Installing the Nutanix PowerPack</i>	4

NOTE: ScienceLogic provides this documentation for the convenience of ScienceLogic customers. Some of the configuration information contained herein pertains to third-party vendor software that is subject to change without notice to ScienceLogic. ScienceLogic makes every attempt to maintain accurate technical information and cannot be held responsible for defects or changes in third-party vendor software. There is no written or implied guarantee that information contained herein will work for all third-party variants. See the End User License Agreement (EULA) for more information.

What is Nutanix?

The Nutanix Virtual Computing Platform converges server and storage resources into an easy-to-deploy integrated appliance. Data center capacity can be easily expanded one node at a time, delivering linear and predictable scale-out with pay-as-you-grow flexibility.

Nutanix delivers "invisible" infrastructure for next generation enterprise computing by natively converging compute, storage, and virtualization into a turnkey hyper-converged solution.

What Does the Nutanix Base Pack PowerPack Monitor?

The *Nutanix Base Pack PowerPack* includes Dynamic Applications that can monitor performance metrics and collect configuration data for all Nutanix devices.

In addition to Dynamic Applications, the PowerPack includes the following features:

- Event Policies and corresponding alerts that are triggered when Nutanix component devices meet certain status criteria
- Device Classes for each of the Nutanix devices monitored
- A sample Credential for discovering Nutanix devices
- Dashboards that display information about Nutanix instances and component devices
- A Run Book Action and an Automation policy to assign the proper device class to the Nutanix root device

Installing the Nutanix PowerPack

Before completing the steps in this manual, you must import and install the latest version of the *Nutanix Base Pack PowerPack*.

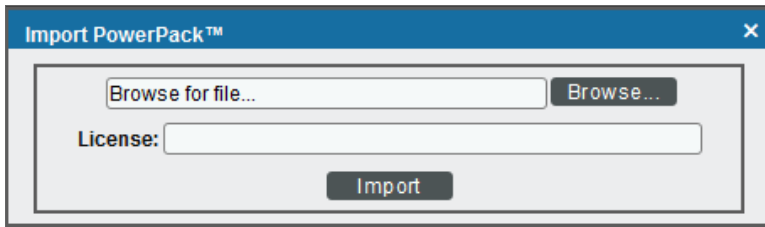
NOTE: If you are upgrading from an earlier version of the PowerPack, see the [Release Notes](#) for the version you are installing for upgrade instructions.

TIP: By default, installing a new version of a PowerPack overwrites all content from a previous version of that PowerPack that has already been installed on the target system. You can use the **Enable Selective PowerPack Field Protection** setting in the **Behavior Settings** page (System > Settings > Behavior) to prevent new PowerPacks from overwriting local changes for some commonly customized fields. (For more information, see the **System Administration** manual.)

To download and install a PowerPack:

1. Download the PowerPack from the [ScienceLogic Customer Portal](#).
2. Go to the **PowerPack Manager** page (System > Manage > PowerPacks).
3. In the **PowerPack Manager** page, click the **[Actions]** button, then select *Import PowerPack*.

4. The **Import PowerPack** dialog box appears:



5. Click the **[Browse]** button and navigate to the PowerPack file.
6. When the **PowerPack Installer** modal page appears, click the **[Install]** button to install the PowerPack.

NOTE: If you exit the **PowerPack Installer** modal without installing the imported PowerPack, the imported PowerPack will not appear in the **PowerPack Manager** page. However, the imported PowerPack will appear in the **Imported PowerPacks** modal. This page appears when you click the **[Actions]** menu and select *Install PowerPack*.

Chapter

2

Configuration and Discovery

Overview

The following sections describe how to configure and discover your Nutanix system for monitoring by SL1 using the *Nutanix Base Pack PowerPack*:

<i>Configuring the Nutanix Credentials</i>	6
<i>Discovering Nutanix Systems</i>	7
<i>Verifying Discovery and Dynamic Application Alignment</i>	9
<i>Viewing Nutanix Component Devices</i>	10

Configuring the Nutanix Credentials

To use the Dynamic Applications in the *Nutanix Base Pack PowerPack*, you must first configure the credential in SL1. This credential allows SL1 to communicate with the Nutanix API. The PowerPack includes the "Nutanix API | Example" credential that you can use as a template.

To configure the Nutanix credential:

1. Go to the **Credential Management** page (System > Manage > Credentials).

2. Locate the **Nutanix API | Example** credential and click its wrench icon (🔧). The **Credential Editor** modal page appears:

The screenshot shows a 'Credential Editor' window with the following fields and values:

- Credential Name:** Nutanix API | Example
- Hostname/IP:** %D
- Port:** 9440
- Timeout(ms):** 20000
- Username:** <USERNAME>
- Password:** (masked with dots)

Buttons: Save, Save As

3. Enter values in the following fields:
 - **Credential Name.** Type a new name for your Nutanix credential.
 - **Hostname/IP.** Type %D.
 - **Username.** Type the username that SL1 will use to connect to the Nutanix system.
 - **Password.** Type the password for the username you entered.

NOTE: You can use the default values for the remaining fields.

4. Click the **[Save As]** button, and then click **[OK]**.

Discovering Nutanix Systems

To create and run a discovery session that will discover your Nutanix system, perform the following steps:

1. Go to the **Discovery Control Panel** page (System > Manage > Discovery).

2. Click the **[Create]** button to create a new discovery session. The **Discovery Session Editor** window appears:

The screenshot shows the 'Discovery Session Editor | Editing Session [3]' window. It is divided into several sections:

- Identification Information:** Name field contains 'Nutanix Discovery'. Description field is empty.
- IP and Credentials:**
 - IP Address/Hostname Discovery List:** Text field contains '10.128.80.56'. Below it are 'Upload File' and 'Browse...' buttons.
 - SNMP Credentials:** A list box with 'SNMP Public V2' selected. Other items include Dell EMC Isilon, EM7 Default V2/V3, IPSLA, NetApp 8.3/9.3, and Nutanix Public V1.
 - Other Credentials:** A list box with 'Nutanix API | Example' selected. Other items include Citrix XenServer, EMC SMI-S, EMC VMAX, Local API, and NetApp 7-mode.
- Detection and Scanning:**
 - Initial Scan Level:** [System Default (recommended)]
 - Scan Throttle:** [System Default (recommended)]
 - Port Scan All IPs:** [System Default (recommended)]
 - Port Scan Timeout:** [System Default (recommended)]
 - Detection Method & Port:** A list box with 'Default Method' selected. Other items include UDP: 161 SNMP, TCP: 1 - tcpmux, TCP: 2 - compressnet, TCP: 3 - compressnet, TCP: 5 - rje, TCP: 7 - echo, TCP: 9 - discard, TCP: 11 - systat, TCP: 13 - daytime, and TCP: 15 - netstat.
 - Interface Inventory Timeout (ms):** 600000
 - Maximum Allowed Interfaces:** 10000
 - Bypass Interface Inventory:**
- Basic Settings:**
 - Discover Non-SNMP:**
 - Model Devices:**
 - DHCP:**
 - Device Model Cache TTL (h):** 2
 - Collection Server PID:** 1
 - Organization:** [Nutanix Guardians Organization]
 - Add Devices to Device Group(s):** A list box with 'None Servers' selected.
 - Apply Device Template:** [Choose a Template]

At the bottom, there are 'Save' and 'Save As' buttons, and a 'Log All' checkbox which is checked.



3. Enter values in the following fields:

- **IP Address Discovery List.** Type the IP addresses for the Nutanix systems you want to discover.

NOTE: Do not include both Prism Element and Prism Central devices in the **IP Address Discovery List** field. The *Nutanix: Base Pack PowerPack* supports discovery of individual Prism Element clusters, OR a Prism Central device with multiple Prism Element clusters. It is recommended that customers use only one of these options.

- **SNMP Credentials.** Select *SNMP Public V2* if applicable.
- **Other Credentials.** Select the credential that you configured in the previous section.
- **Discover Non-SNMP.** If you are not using an SNMP credential, ensure that this checkbox is selected.
- **Organization.** Select your organization.

4. You can enter values in the other fields on this page, but are not required to and can simply accept the default values. For more information about the other fields on this page, see the **Discovery & Credentials** manual.
5. Click the **[Save]** button and then close the **Discovery Session Editor** window.

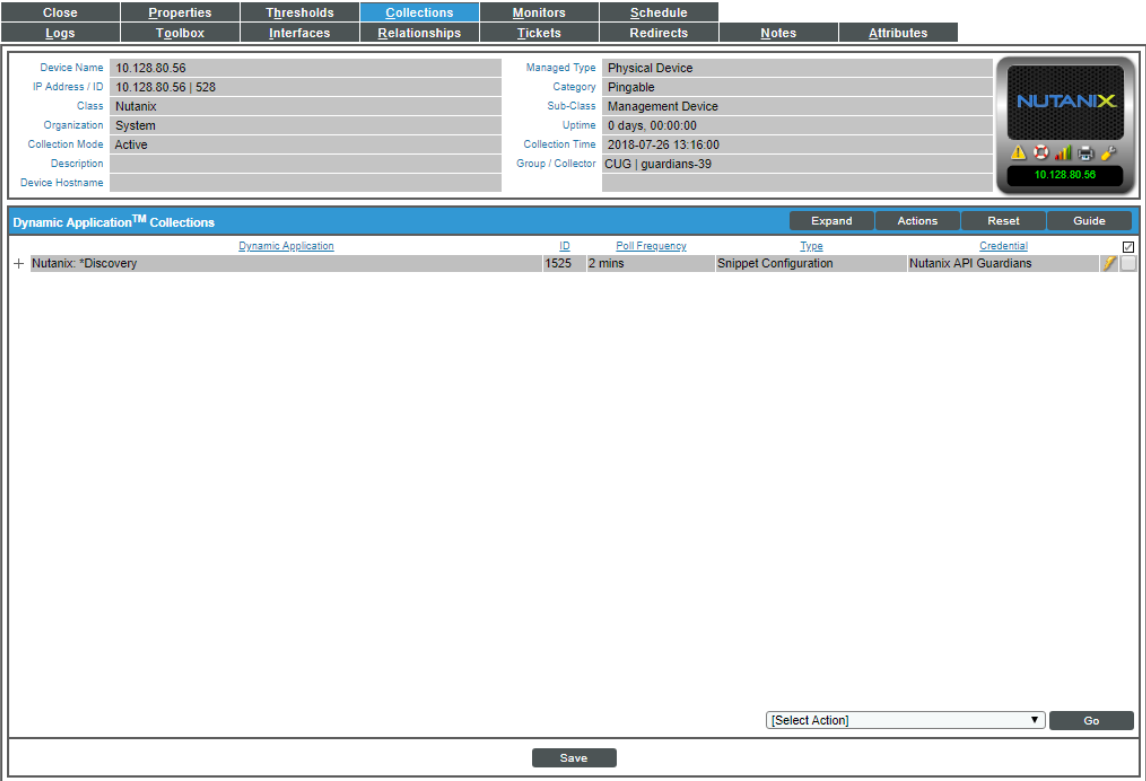
- The discovery session you created will appear at the top of the **Discovery Control Panel** page. Click its lightning-bolt icon () to run the discovery session.
- The **Discovery Session** window will be displayed.
- When the Nutanix system is discovered, click its device icon () to view the **Device Properties** page for the Nutanix system.
- After the Nutanix system is discovered, the child components and devices associated with that system will also appear in the **Device Manager** page.

NOTE: It can take up to 30 minutes for the Dynamic Applications and device class to align.

Verifying Discovery and Dynamic Application Alignment

To verify that SL1 has automatically aligned the correct Dynamic Applications during discovery:

- From the **Device Properties** page for the Nutanix system, click the **[Collections]** tab. The **Dynamic Application Collections** page appears.
- The "Nutanix: *Discovery" Dynamic Application should be displayed in the list of Dynamic Applications aligned to the Nutanix system:




Close	Properties	Thresholds	Collections	Monitors	Schedule		
Logs	Toolbox	Interfaces	Relationships	Tickets	Redirects	Notes	Attributes
Device Name	10.128.80.56		Managed Type	Physical Device			
IP Address / ID	10.128.80.56 528		Category	Pingable			
Class	Nutanix		Sub-Class	Management Device			
Organization	System		Uptime	0 days, 00:00:00			
Collection Mode	Active		Collection Time	2018-07-26 13:16:00			
Description			Group / Collector	CUG guardians-39			
Device Hostname							

Dynamic Application™ Collections							Expand	Actions	Reset	Guide
	Dynamic Application	ID	Poll Frequency	Type	Credential					
+ Nutanix: *Discovery		1525	2 mins	Snippet Configuration	Nutanix API Guardians					

[Select Action]

Viewing Nutanix Component Devices

In addition to the **Device Manager** page (Registry > Devices > Device Manager), you can view the Nutanix system and all associated component devices in the following places in the user interface:

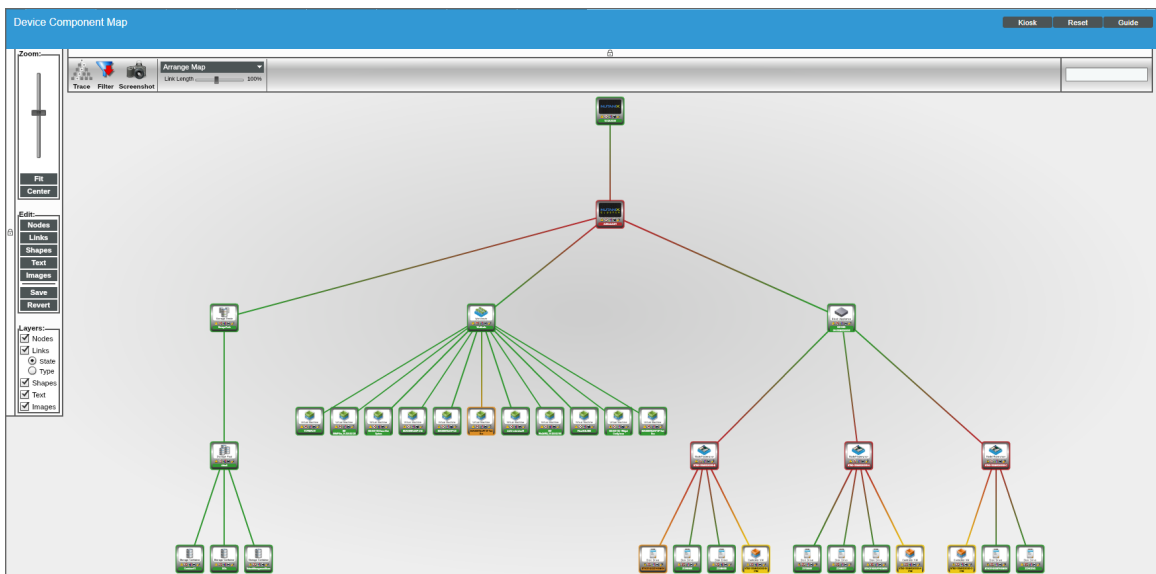
- The **Device View** modal page (click the bar-graph icon  for a device, then click the **Topology** tab) displays a map of a particular device and all of the devices with which it has parent-child relationships. Double-clicking any of the devices listed reloads the page to make the selected device the primary device:



- The **Device Components** page (Registry > Devices > Device Components) displays a list of all root devices and component devices discovered by SL1 in an indented view, so you can easily view the hierarchy and relationships between child devices, parent devices, and root devices. To view the component devices associated with a Nutanix system, find the Nutanix device and click its plus icon (+):

Device Name	IP Address	Device Category	Device Class Sub-class	DID	Organization	Current State	Collection Group	Collection State
10.128.80.56	10.128.80.56	Pingable	Nutanix Management Device	528	System	Healthy	CUG	Active
dc2hwibk8101	--	Cluster	Nutanix Cluster	529	System	Critical	CUG	Active
NX-1065-G4-15SM5250085	--	Appliance	Nutanix Block Appliance	546	System	Healthy	CUG	Active
Storage Pools	--	Group	Nutanix Virtual Storage	530	System	Healthy	CUG	Active
Workloads	--	Group	Nutanix Workload Group	531	System	Healthy	CUG	Active
BD-AIO-112 - Widget Config Issue	--	Workloads	Nutanix Workload VM	545	System	Healthy	CUG	Active
BD-AIO-113 Demo-Dev System	--	Workloads	Nutanix Workload VM	538	System	Healthy	CUG	Active
BD-SNMPsim_10.128.82.128	--	Workloads	Nutanix Workload VM	537	System	Healthy	CUG	Active
BD-Win2k8R2_10.128.82.192	--	Workloads	Nutanix Workload VM	543	System	Healthy	CUG	Active
BDAGENTLSAP 6.42	--	Workloads	Nutanix Workload VM	539	System	Healthy	CUG	Active
BDAGENTLSAP SP Test Box	--	Workloads	Nutanix Workload VM	541	System	Major	CUG	Unavailable
BDAGENTLSAP SP Test Box	--	Workloads	Nutanix Workload VM	561	System	Healthy	CUG	Active
BDAGENTLSAP-6.5	--	Workloads	Nutanix Workload VM	540	System	Healthy	CUG	Active
dc2-b-rfb-ubun01	--	Workloads	Nutanix Workload VM	542	System	Healthy	CUG	Active
PowerSCILORD	--	Workloads	Nutanix Workload VM	544	System	Healthy	CUG	Active
TCPREPLAY	--	Workloads	Nutanix Workload VM	536	System	Healthy	CUG	Active

- The **Component Map** page (Views > Device Maps > Components) allows you to view devices by root node and view the relationships between root nodes, parent components, and child components in a map. This makes it easy to visualize and manage root nodes and their components. SL1 automatically updates the **Component Map** as new component devices are discovered. The platform also updates each map with the latest status and event information. To view the map for a Nutanix system, go to the **Component Map** page and select the map from the list in the left NavBar. To learn more about the **Component Map** page, see the **Views** manual.



Chapter

3

Dashboards

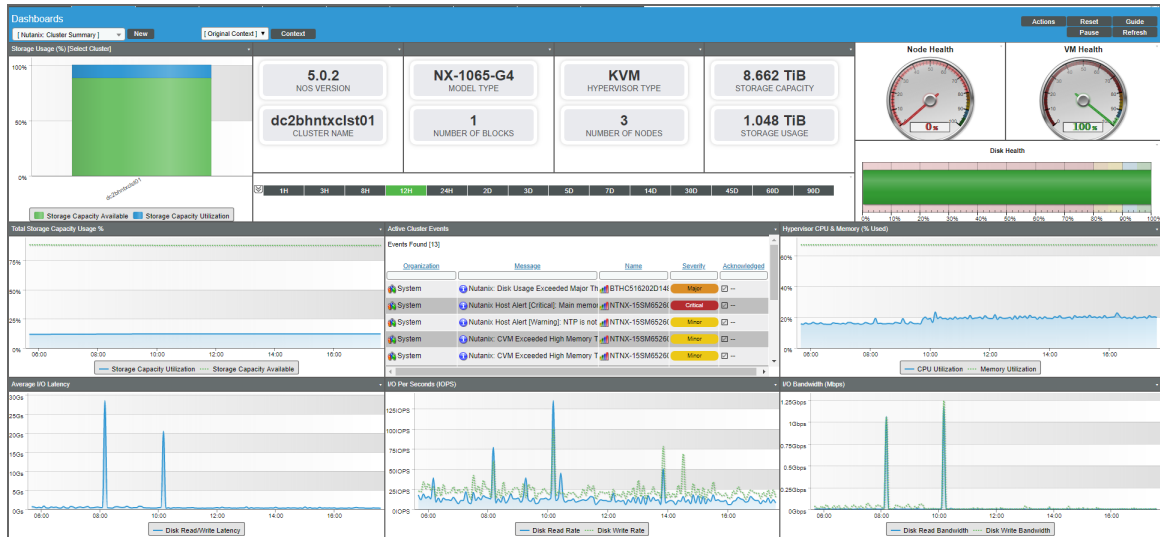
Overview

The following sections describe the two built-in dashboards and the device dashboards that are included in the *Nutanix: Base Pack PowerPack*:

<i>Nutanix: Cluster Summary</i>	13
<i>Nutanix: Container Performance</i>	14
Device Dashboards	15
<i>Nutanix Cluster Dashboard</i>	15
<i>Nutanix CVM Dashboard</i>	16
<i>Nutanix Hard Disk Dashboard</i>	17
<i>Nutanix Nodes/Hypervisor Dashboard</i>	18
<i>Nutanix Storage Container Dashboard</i>	19
<i>Nutanix Storage Pool Dashboard</i>	20
<i>Nutanix Workload VM Dashboard</i>	21

Nutanix: Cluster Summary

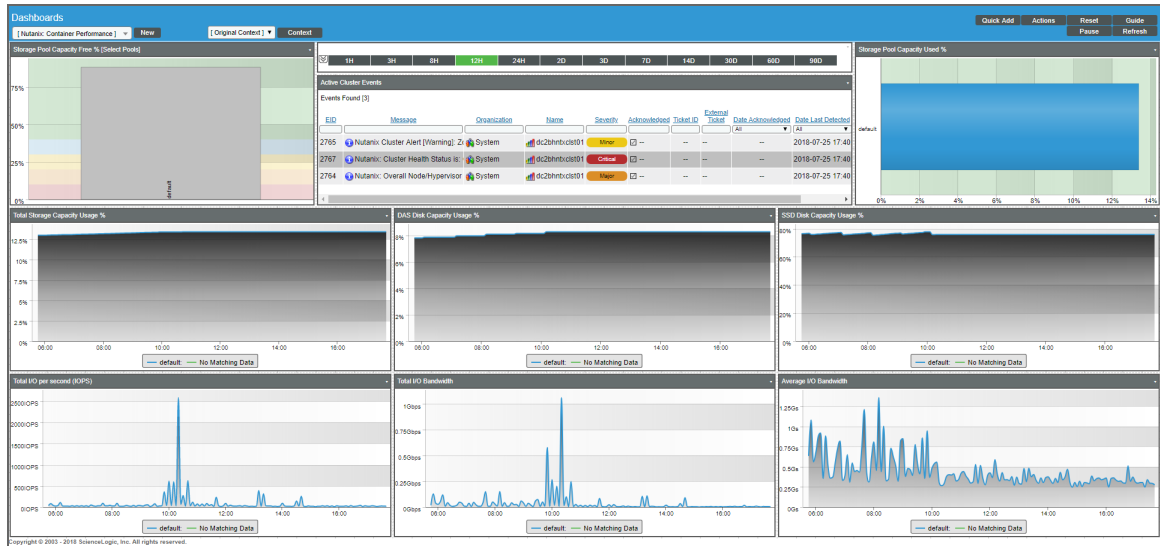
The "Nutanix: Cluster Summary" dashboard displays the following information:



- A widget that displays the available storage capacity and storage capacity utilization. You must select one of the clusters (bars) in this widget to display information about that cluster in the remaining widgets.
- Informational widgets that include:
 - NOS Version and Cluster Name
 - Model Type and Number of Blocks
 - Hypervisor Type and Number of Nodes
 - Storage Capacity and Storage Usage
- Gauges for Node Health and VM Health, and a bar representing Disk Health
- Total storage capacity usage over a period of time
- A list of events associated with the cluster
- Hypervisor CPU and memory used over a period of time
- Average I/O latency over a period of time
- I/O per second over a period of time
- I/O bandwidth over a period of time

Nutanix: Container Performance

The "Nutanix: Container Performance" dashboard displays the following information:



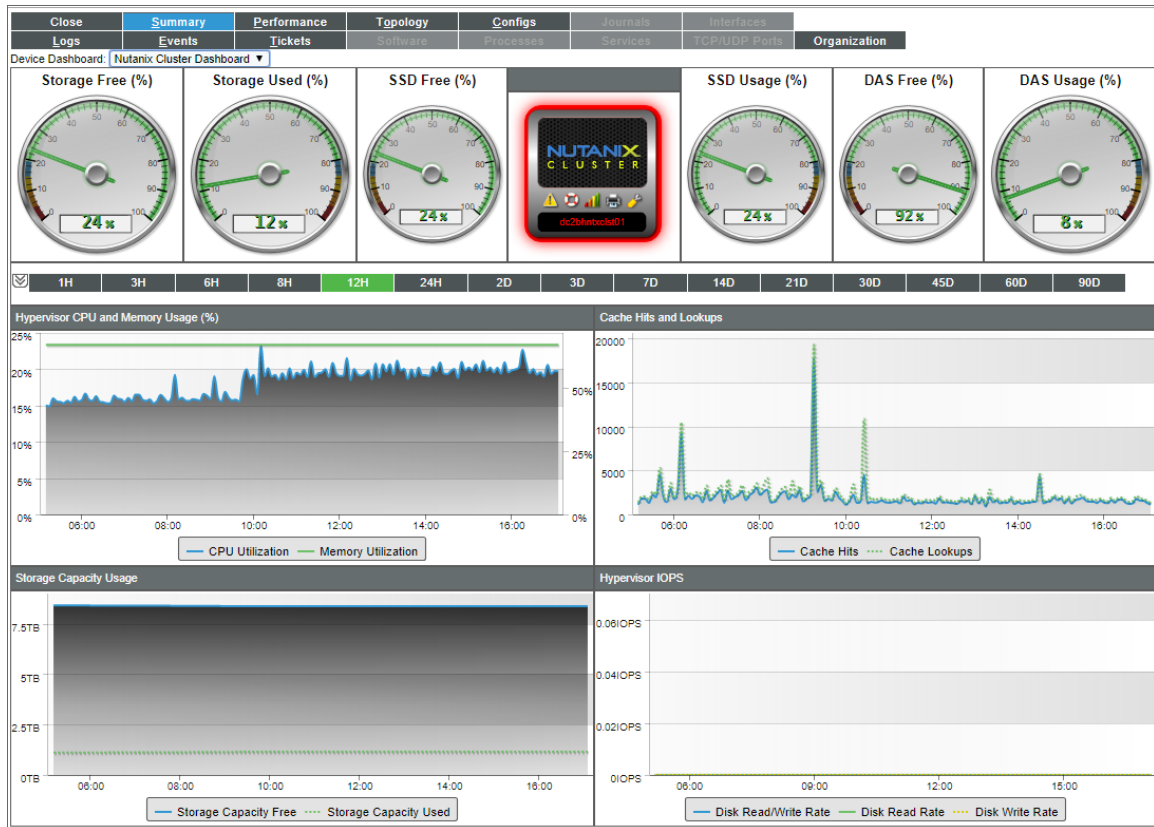
- A widget that displays the available storage pool capacity. You must select one of the pools (bars) in this widget to display information about that pool in the remaining widgets.
- A list of events associated with the storage pool
- A bar graph depicting storage pool capacity used
- Total storage capacity usage over a period of time
- DAS disk capacity usage over a period of time
- SSD disk capacity usage over a period of time
- Total I/O per second over a period of time
- Total I/O bandwidth over a period of time
- Average I/O bandwidth over a period of time

Device Dashboards

The *Nutanix Base Pack PowerPack* includes device dashboards that provide summary information for Nutanix devices.

Nutanix Cluster Dashboard

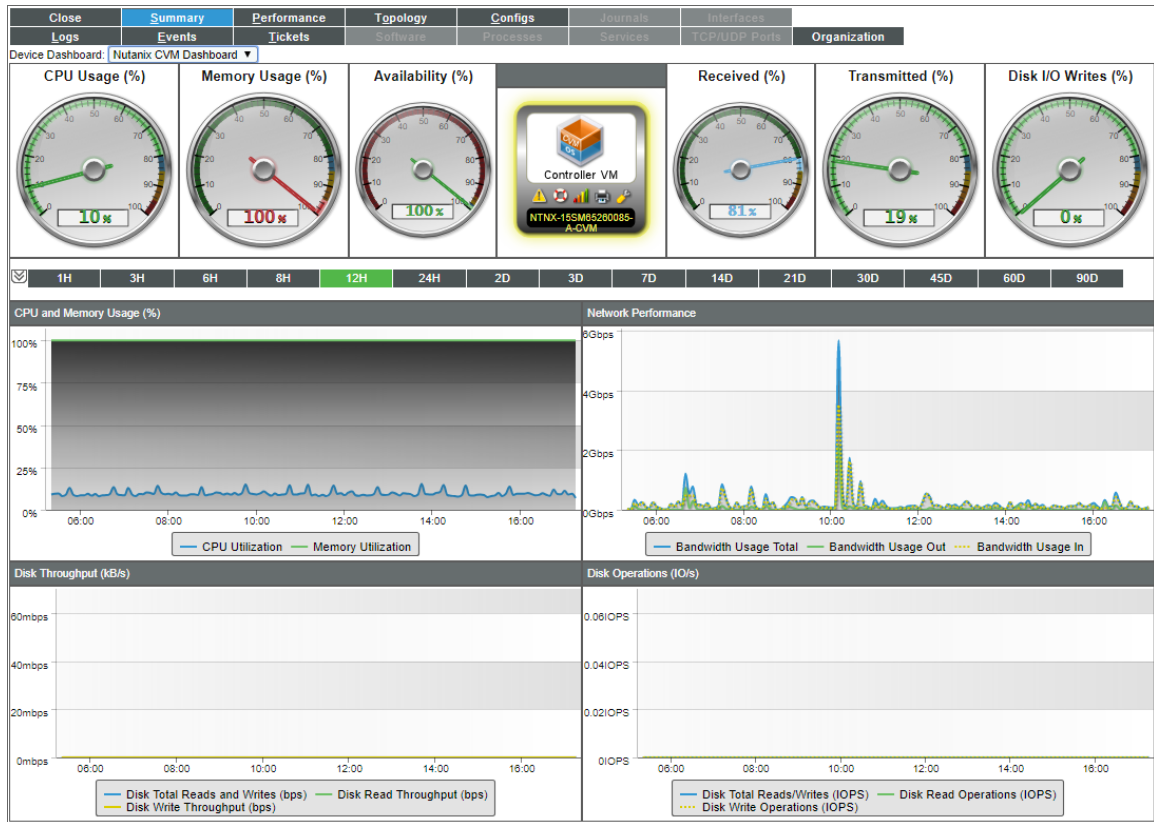
The "Nutanix Cluster" device dashboard displays the following information:



- Hypervisor CPU and memory usage over a specified period of time
- Storage capacity usage over a specified period of time
- Cache hit ratio over a specified period of time
- Hypervisor IOPs over a period of time
- Percentage of free and used storage, SSD, and DAS

Nutanix CVM Dashboard

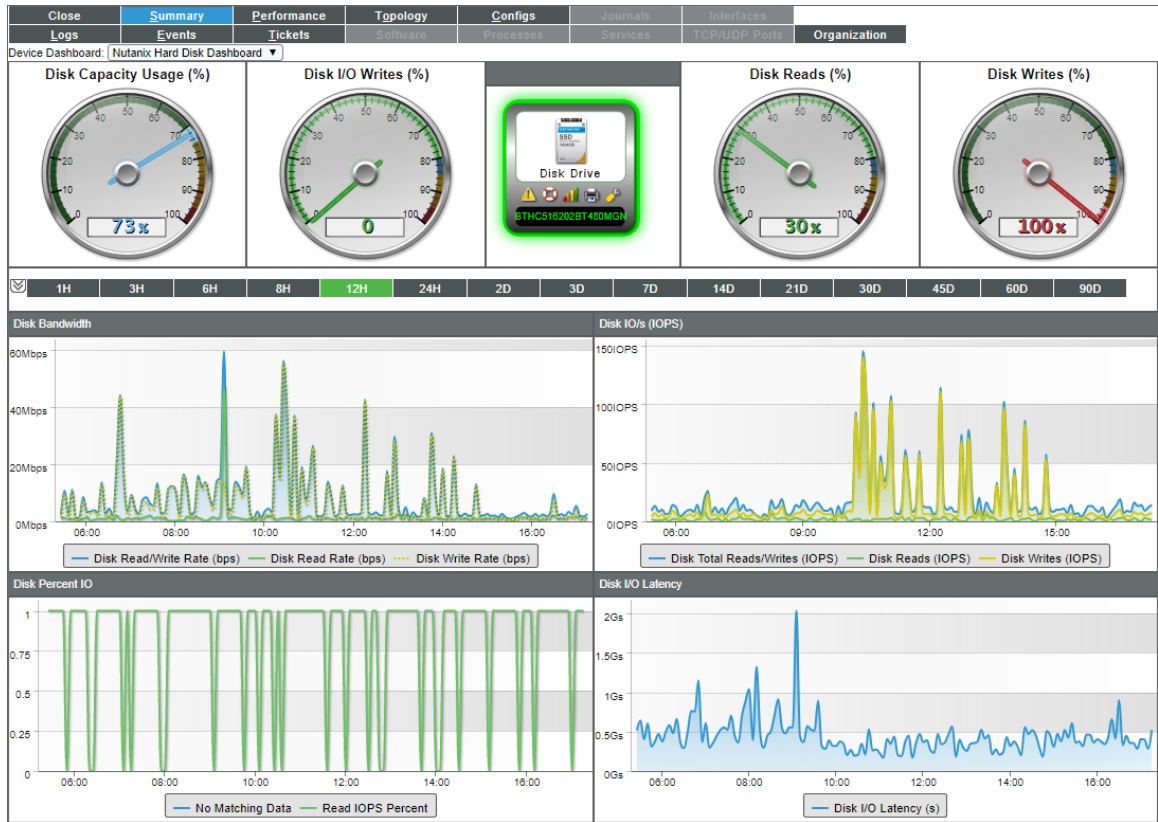
The "Nutanix CVM" device dashboard displays the following information:



- A number of gauges that display the following:
 - CPU Usage
 - Memory Usage
 - Availability
 - Received and Transmitted data
 - Disk I/O Wires
- CPU and Memory usage over a period of time
- Network performance over a period of time
- Disk throughput over a period of time
- Disk operations over a period of time

Nutanix Hard Disk Dashboard

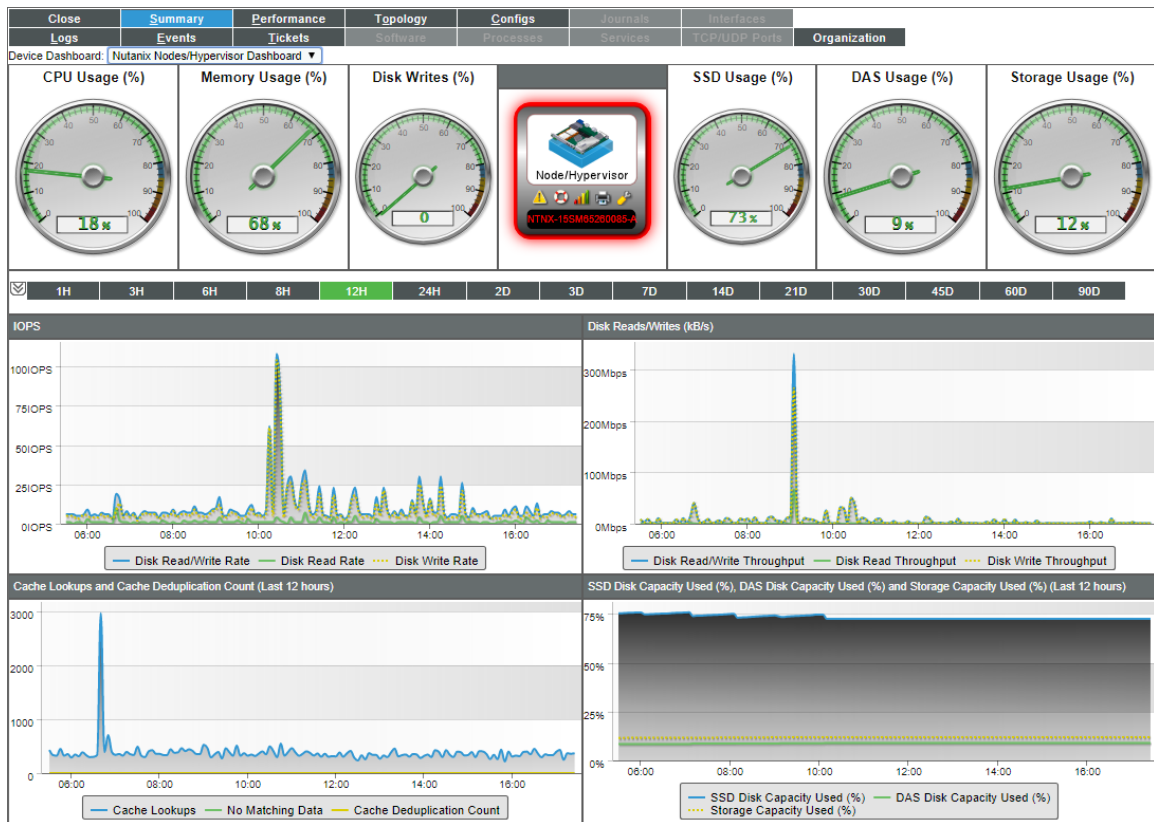
The "Nutanix Hard Disk" device dashboard displays the following information:



- A number of gauges that display the following:
 - Disk Capacity Usage
 - Disk I/O Writes
 - Disk Reads
 - Disk Writes
- Disk bandwidth over a period of time
- Disk IO/s over a period of time
- Disk percent I/O over a period of time
- Disk I/O latency over a period of time

Nutanix Nodes/Hypervisor Dashboard

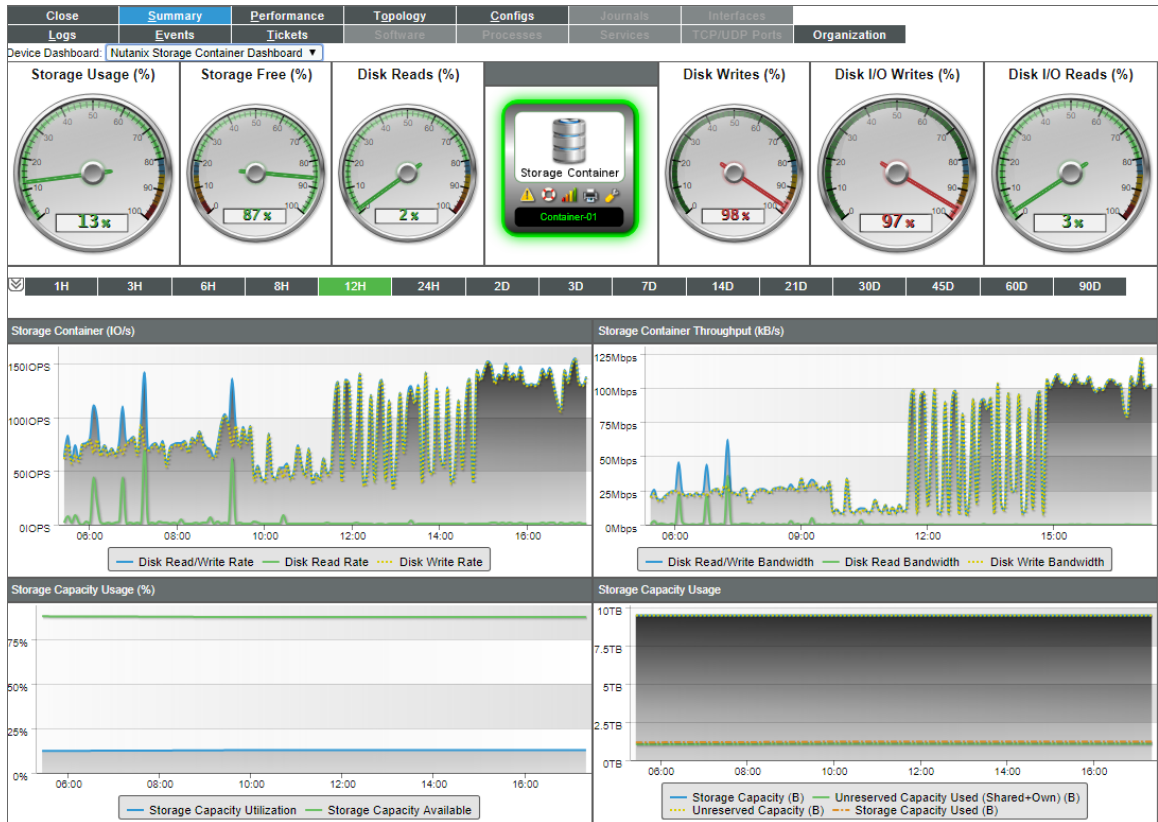
The "Nutanix Nodes/Hypervisor" device dashboard displays the following information:



- A number of gauges that display the following:
 - CPU Usage
 - Memory Usage
 - Disk Writes
 - SSD Usage
 - DAS Usage
 - Storage Usage
- IOPS over a period of time
- Disk reads and writes over a period of time
- Cache lookups and deduplication counts over a period of time
- SSD disk capacity used and storage capacity used over a period of time

Nutanix Storage Container Dashboard

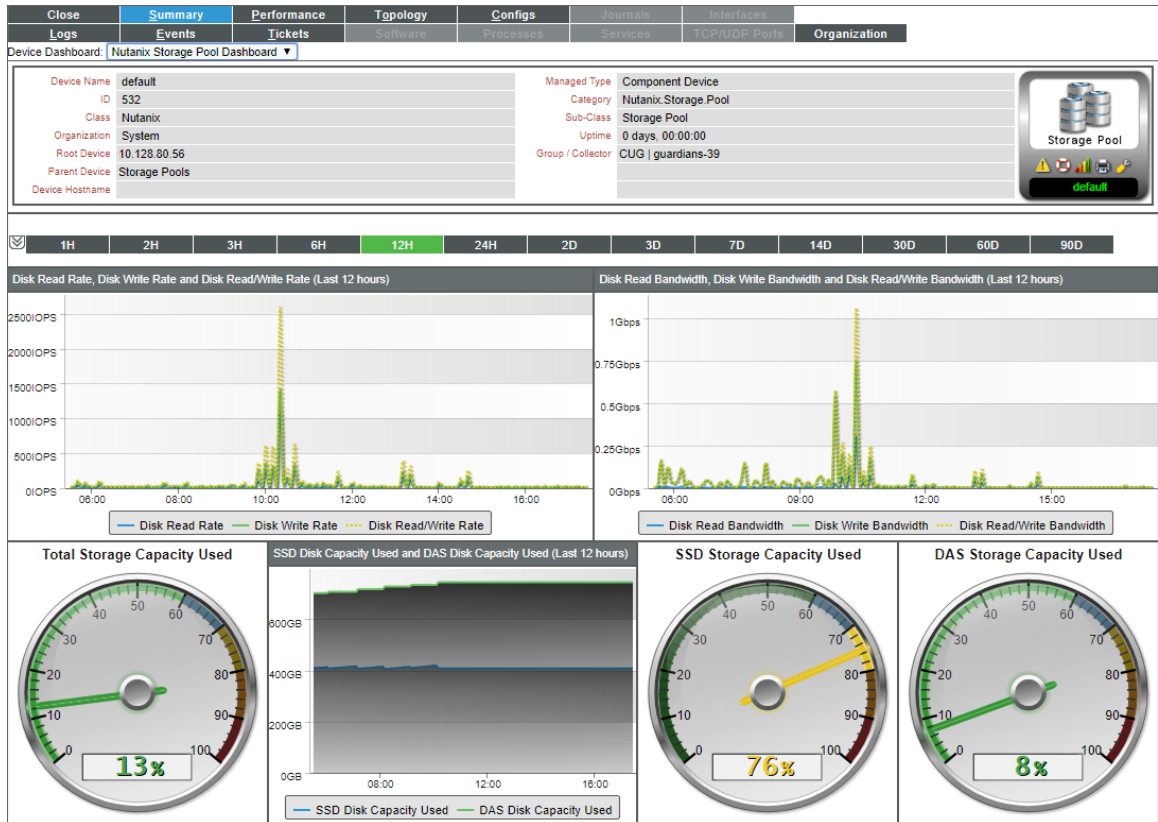
The "Nutanix Storage Container" device dashboard displays the following information:



- A number of gauges that display the following:
 - Storage Usage and Storage Free
 - Disk Reads and Disk Writes
 - Disk I/O Writes and Disk I/O Reads
- Storage container IO/s over a period of time
- Storage container throughput over a period of time
- Storage capacity usage over a period of time
- Storage capacity and unreserved capacity over time

Nutanix Storage Pool Dashboard

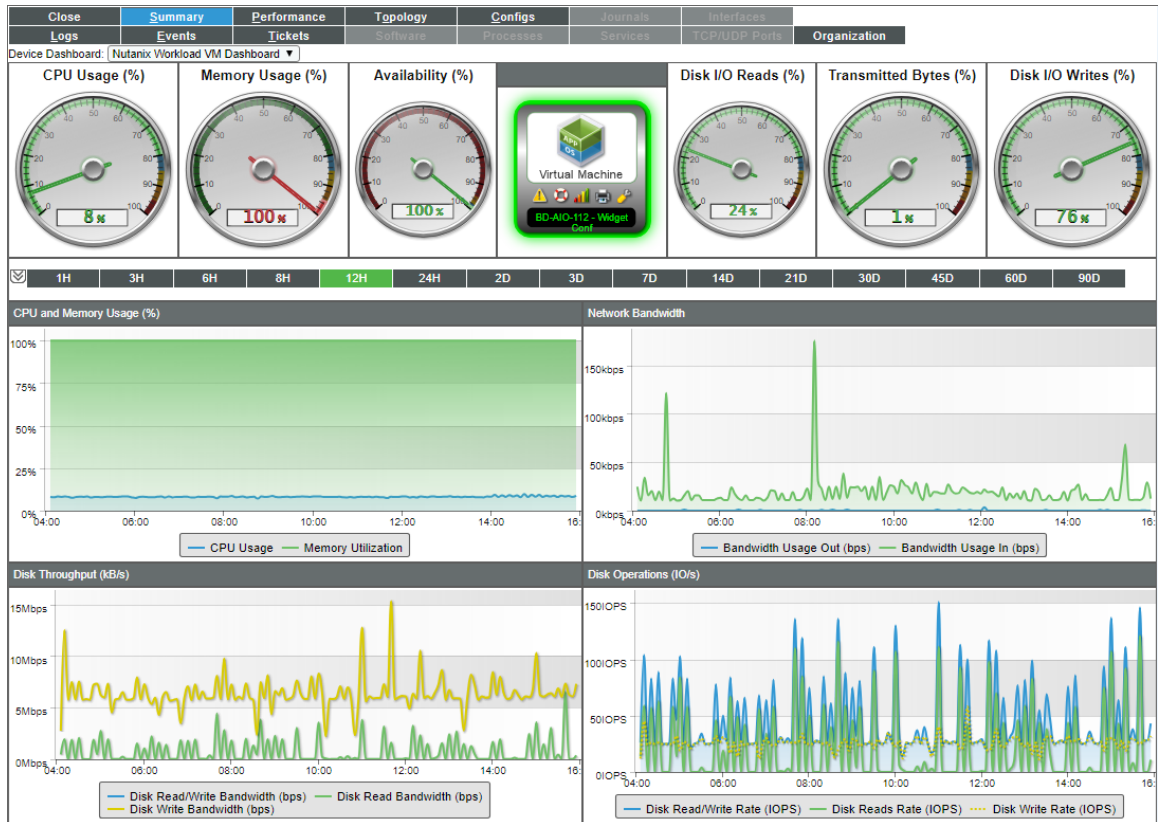
The "Nutanix Storage Pool" device dashboard displays the following information:



- A number of gauges that display the following:
 - Total Storage Capacity Used
 - SSD Capacity Used
 - DAS Storage Capacity Used
- Disk read rate and write rate over a period of time
- Disk read and write bandwidth over a period of time
- SSD disk capacity used over a period of time
- Storage capacity and unreserved capacity over time

Nutanix Workload VM Dashboard

The "Nutanix Workload VM" device dashboard displays the following information:



- A number of gauges that display the following:
 - CPU Usage, Memory Usage, and Availability
 - Disk I/O Reads and Disk I/O Writes
 - Transmitted Bytes
- CPU and memory usage over a period of time
- Network bandwidth over a period of time
- Disk throughput over a period of time
- Disk operations over a period of time

© 2003 - 2020, ScienceLogic, Inc.

All rights reserved.

LIMITATION OF LIABILITY AND GENERAL DISCLAIMER

ALL INFORMATION AVAILABLE IN THIS GUIDE IS PROVIDED "AS IS," WITHOUT WARRANTY OF ANY KIND, EITHER EXPRESS OR IMPLIED. SCIENCELOGIC™ AND ITS SUPPLIERS DISCLAIM ALL WARRANTIES, EXPRESS OR IMPLIED, INCLUDING, BUT NOT LIMITED TO, THE IMPLIED WARRANTIES OF MERCHANTABILITY, FITNESS FOR A PARTICULAR PURPOSE OR NON-INFRINGEMENT.

Although ScienceLogic™ has attempted to provide accurate information on this Site, information on this Site may contain inadvertent technical inaccuracies or typographical errors, and ScienceLogic™ assumes no responsibility for the accuracy of the information. Information may be changed or updated without notice. ScienceLogic™ may also make improvements and / or changes in the products or services described in this Site at any time without notice.

Copyrights and Trademarks

ScienceLogic, the ScienceLogic logo, and EM7 are trademarks of ScienceLogic, Inc. in the United States, other countries, or both.

Below is a list of trademarks and service marks that should be credited to ScienceLogic, Inc. The ® and ™ symbols reflect the trademark registration status in the U.S. Patent and Trademark Office and may not be appropriate for materials to be distributed outside the United States.

- ScienceLogic™
- EM7™ and em7™
- Simplify IT™
- Dynamic Application™
- Relational Infrastructure Management™

The absence of a product or service name, slogan or logo from this list does not constitute a waiver of ScienceLogic's trademark or other intellectual property rights concerning that name, slogan, or logo.

Please note that laws concerning use of trademarks or product names vary by country. Always consult a local attorney for additional guidance.

Other

If any provision of this agreement shall be unlawful, void, or for any reason unenforceable, then that provision shall be deemed severable from this agreement and shall not affect the validity and enforceability of any remaining provisions. This is the entire agreement between the parties relating to the matters contained herein.

In the U.S. and other jurisdictions, trademark owners have a duty to police the use of their marks. Therefore, if you become aware of any improper use of ScienceLogic Trademarks, including infringement or counterfeiting by third parties, report them to Science Logic's legal department immediately. Report as much detail as possible about the misuse, including the name of the party, contact information, and copies or photographs of the potential misuse to: legal@sciencelogic.com



800-SCI-LOGIC (1-800-724-5644)

International: +1-703-354-1010