



---

# Monitoring VMware Systems

VMware: vSphere Base Pack PowerPack version 209

---

# Table of Contents

<b>Introduction</b> .....	<b>3</b>
What is VMware vSphere? .....	4
What Does the VMware: vSphere Base Pack PowerPack Monitor? .....	4
Installing the VMware: vSphere Base Pack PowerPack .....	4
Version Requirements and Limitations .....	5
<b>Configuring VMware vCenter Server for Monitoring</b> .....	<b>7</b>
Prerequisites for Monitoring VMware vCenter Servers .....	7
Ensuring the VMware vCenter Web Service is Running .....	8
Creating a Read-Only User Account .....	11
Configuring a SOAP/XML Credential .....	15
Testing the VMware Credential .....	17
Configuring a VMware Device Template .....	18
<b>Discovering a vCenter Server</b> .....	<b>20</b>
Discovering a vCenter Server .....	20
Configuring the VMware Dynamic Applications .....	22
Configuring the "VMware: Events" Dynamic Application .....	22
Configuring the Polling Frequency for VMware Performance Dynamic Applications .....	23
Configuring the "VMware: Remove Session Cookies" Dynamic Application .....	24
Viewing Component Devices .....	25
Relationships with Other Types of Component Devices .....	28
Determining Availability for Component Devices .....	28
<b>VMware Dashboards</b> .....	<b>35</b>
Installing the VMware: vSphere Dashboards PowerPack .....	36
VMware Host Performance Dashboard .....	37
VMware vCenter Overview Dashboard .....	39
VMware Device Dashboards .....	41
VMware: Cluster .....	42
VMware: Datastore .....	43
VMware: Datastore Cluster .....	44
VMware: Host .....	45
VMware: Resource Pool .....	46
VMware: Virtual App .....	47
VMware: Virtual Machine .....	48

## Introduction

---

### Overview

This manual describes how to monitor VMware vCenter Servers in the ScienceLogic platform using the VMware: vSphere Base Pack PowerPack.

The following sections provide an overview of VMware and the VMware: vSphere Base Pack PowerPack:

<i>What is VMware vSphere?</i> .....	4
<i>What Does the VMware: vSphere Base Pack PowerPack Monitor?</i> .....	4
<i>Installing the VMware: vSphere Base Pack PowerPack</i> .....	4
<i>Version Requirements and Limitations</i> .....	5

**NOTE:** ScienceLogic provides this documentation for the convenience of ScienceLogic customers. Some of the configuration information contained herein pertains to third-party vendor software that is subject to change without notice to ScienceLogic. ScienceLogic makes every attempt to maintain accurate technical information and cannot be held responsible for defects or changes in third-party vendor software. There is no written or implied guarantee that information contained herein will work for all third-party variants. See the End User License Agreement (EULA) for more information.

---

## What is VMware vSphere?

vSphere is VMware's cloud virtualization platform that enables users to deploy and manage VMware cloud-based resources using a suite of components, including the vCenter Server centralized management application and ESX/ESXi host servers.

**TIP:** To familiarize yourself with VMware terminology, see the VMware Master Glossary:  
[http://www.vmware.com/pdf/master\\_glossary.pdf](http://www.vmware.com/pdf/master_glossary.pdf).

---

## What Does the VMware: vSphere Base Pack PowerPack Monitor?

To monitor VMware virtual infrastructure using the ScienceLogic platform, you must install the *VMware: vSphere Base Pack PowerPack*. This PowerPack enables you to discover, model, and collect data about all aspects of VMware vSphere, including datacenters, clusters, virtual machines, and datastores.

The *VMware: vSphere Base Pack PowerPack* includes:

- Two example credentials you can use as templates to create SOAP/XML credentials to connect to the VMware devices you want to monitor
- Dynamic Applications to discover, model, and monitor performance metrics and/or collect configuration data for VMware devices.
- Device Classes for each of the VMware devices the ScienceLogic platform monitors
- A Device Template that enables you to easily align multiple Dynamic Applications to VMware devices
- Event Policies and corresponding alerts that are triggered when VMware devices meet certain status criteria
- Device dashboards for several of the discoverable VMware component devices

**NOTE:** The *VMware: vSphere Dashboards PowerPack* contains additional dashboards that display data collected from VMware systems. To view these dashboards, you must install the *VMware: vSphere Dashboards PowerPack* on your ScienceLogic system. (For more information, see the chapter on [VMware Dashboards](#).)

---

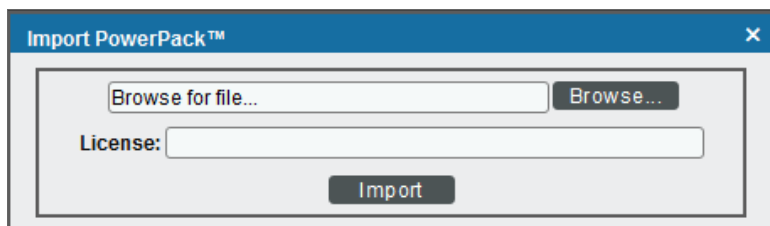
## Installing the VMware: vSphere Base Pack PowerPack

Before completing the steps in this manual, you must import and install the latest version of the *VMware: vSphere Base Pack PowerPack*.

**TIP:** By default, installing a new version of a PowerPack overwrites all content in that PowerPack that has already been installed on the target system. You can use the **Enable Selective PowerPack Field Protection** setting in the **Behavior Settings** page (System > Settings > Behavior) to prevent new PowerPacks from overwriting local changes for some commonly customized fields. (For more information, see the **System Administration** manual.)

To download and install a PowerPack:

1. Download the PowerPack from the [ScienceLogic Customer Portal](#).
2. Go to the **PowerPack Manager** page (System > Manage > PowerPacks).
3. In the **PowerPack Manager** page, click the **[Actions]** button, then select *Import PowerPack*.
4. The **Import PowerPack** dialog box appears:



5. Click the **[Browse]** button and navigate to the PowerPack file.
6. When the **PowerPack Installer** modal page appears, click the **[Install]** button to install the PowerPack.

**NOTE:** If you exit the **PowerPack Installer** modal page without installing the imported PowerPack, the imported PowerPack will not appear in the **PowerPack Manager** page. However, the imported PowerPack will appear in the **Imported PowerPacks** modal page. This page appears when you click the **[Actions]** menu and select *Install PowerPack*.

## Version Requirements and Limitations

The following limitations and requirements apply to specific functionality in the VMware: vSphere Base Pack PowerPack:

- To collect I/O and latency metrics for datastores, you must enable Storage I/O Control. For information about Storage I/O Control, see the [VMware knowledge base](#).
- Datastore Storage Performance Statistics are available only from vCenter systems running vSphere API 4.1.2 or later. The ScienceLogic platform will not collect Datastore Storage Performance Statistics if the Dynamic Applications that use Dynamic Component Mapping are used to monitor ESX or ESXi servers directly.
- Datastore Performance Statistics are unavailable for NFS datastores.

- If VMware Tools is not installed on a guest VM, the ScienceLogic platform cannot collect all performance statistics for that guest VM.
- Because no truly unique identifier is provided by the VMware vSphere API, it is possible that duplicate component devices could be created in the ScienceLogic platform when a virtual machine vMotions between separately monitored ESX/ESXi servers. (This issue does not affect vMotion events that occur within the same component tree, such as between two ESX/ESXi servers that are monitored through the same vCenter server.) Therefore, ScienceLogic recommends monitoring VMware servers through vCenter. In addition to accommodating vMotion events, monitoring through vCenter prevents performance issues on ESX/ESXi servers caused by API use.
- If you want to delete and reinstall version 203 or higher of the VMware: *vSphere Base Pack PowerPack*, you should first delete any existing copies of the Device Template included in the PowerPack and then create new versions of them after reinstalling the PowerPack. Doing so ensures that any copies of the Device Template included in the PowerPack will work properly after installation. You should then assign the new Device Template(s) to any existing Discovery Sessions that were linked to the previous versions of the template(s).

## Configuring VMware vCenter Server for Monitoring

---

### Overview

The following sections describe how to configure VMware vCenter resources for monitoring by the ScienceLogic platform using the VMware: vSphere Base Pack PowerPack:

<i>Prerequisites for Monitoring VMware vCenter Servers</i> .....	7
<i>Ensuring the VMware vCenter Web Service is Running</i> .....	8
<i>Creating a Read-Only User Account</i> .....	11
<i>Configuring a SOAP/XML Credential</i> .....	15
<i>Testing the VMware Credential</i> .....	17
<i>Configuring a VMware Device Template</i> .....	18

---

### Prerequisites for Monitoring VMware vCenter Servers

Before performing the steps for configuring a vCenter server, you must:

- Install and configure a VMware vCenter server that monitors your ESXi and ESX servers.
- Install the VMware vCenter web service. The VMware vCenter web service is installed by default on VMware vCenter servers. For more information about the installation of the VMware vCenter web service, see the [Web Service FAQs page on the VMware website](#).

- Create a user account that the platform can use to access the web service. For vCenter 5.0 and earlier, the VMware vCenter web service uses the user groups and/or active directory users configured on the Windows Server on which vCenter is installed. For vCenter 5.1, the VMware vCenter web service uses the user groups and/or active directory users configured on the VMware SSO server. You might want to create a user account that is used by only the ScienceLogic platform. This chapter includes instructions on how to grant read-only permissions to a vCenter user.
- Have access to the vCenter server using the vSphere client.

If the Windows Server that hosts the vCenter server is SNMP-enabled, you must also configure your ESXi or ESX servers for communication using SNMP. To do so, you must:

- Install the vSphere Command-Line Interface so you can communicate with the ESXi or ESX server. For more information, see <http://www.vmware.com/support/developer/vcli/>.
- Configure SNMP community strings, traps, and polling on the ESXi or ESX server. Assign the server at least one SNMP community string. For more information, see VMware's documentation for [Configuring SNMP for ESXi 5.x and 6.x](#) or [Configuring SNMP for ESX 4.x and ESXi 4.x](#).

---

## Ensuring the VMware vCenter Web Service is Running

Using the default VMware configuration, the VMware vCenter Web Service is automatically started on VMware vCenter servers.

To verify that the web service is available, navigate to the following URL in a browser window:

```
https://ip-address-of-vcenter-server/sdk/vimService.wsdl
```

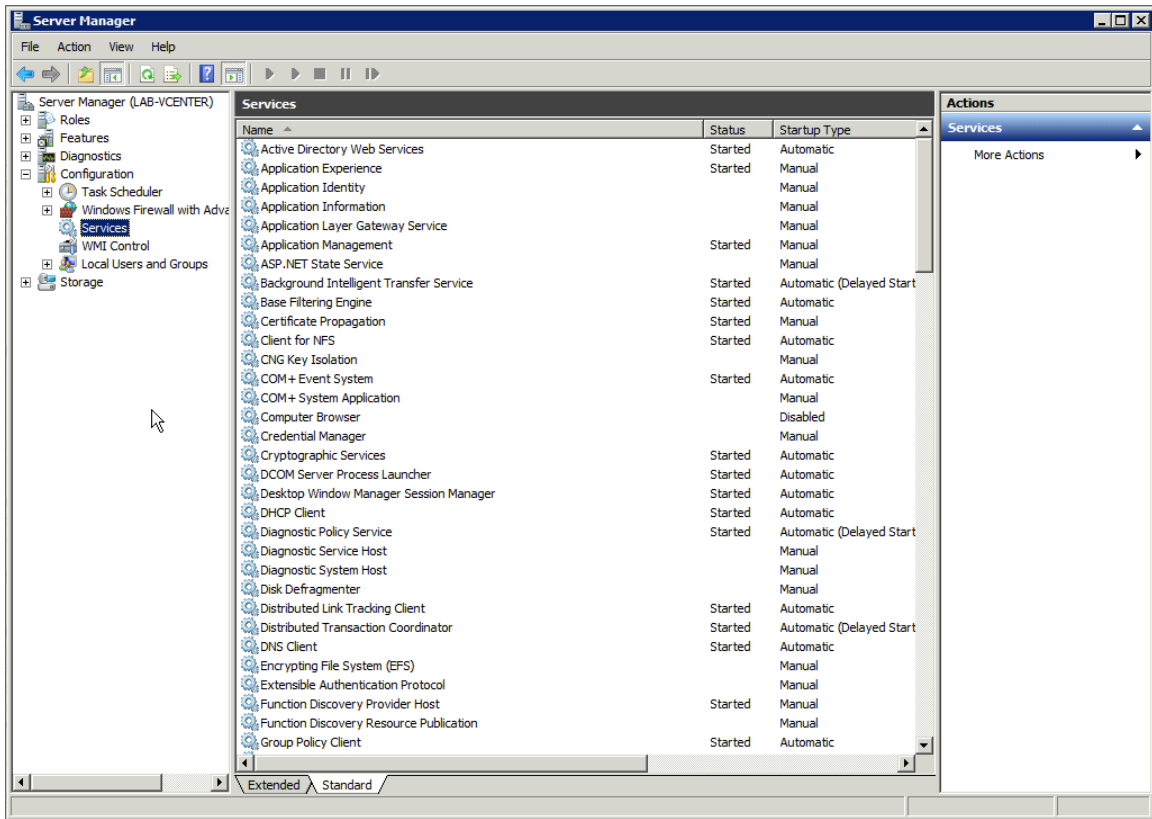
- If the web service is running, an XML document will be returned.
- If a connection error is displayed, the web service might not be running.

To verify the web service is running:

1. Log in to the Windows Server that hosts vCenter Server.
2. Open the **Server Manager**.



- In the left pane, expand the **Configuration** entry and select **Services**.



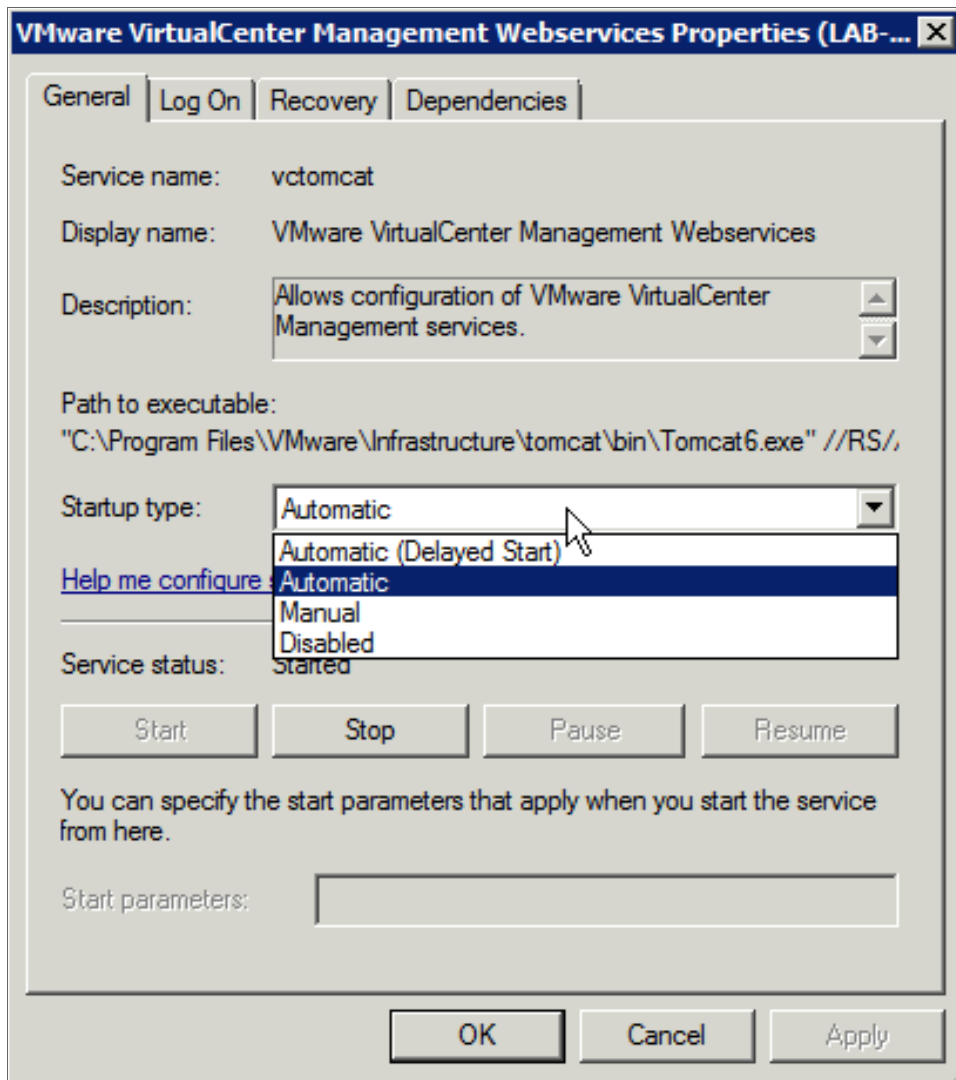
2

- Locate the *VMware VirtualCenter Management Webservices* service. If the web service is configured and started correctly, the **Status** should be *Started* and the **Startup Type** should be *Automatic*.



- If the **Status** is not *Started*, right click on the *VMware vCenter Management Webservices* service, then select *Start*.

6. If the **Startup Type** is not *Automatic*, right click on the VMware vCenter Management Webservices service, then select *Properties*. The general properties for the service are displayed.



7. In the **Startup type** drop-down list, select *Automatic* and then click the [OK] button.

After the web service starts, try navigating to the URL again. If a connection error is still displayed, your network's firewall may be blocking access to port 443 (HTTPS), which is required to use the VMware vCenter web service.

If the computer on which you navigated to the URL does not have access to port 443 on the ESX server, but the Data Collector responsible for monitoring the ESX server does, you can verify connectivity from the console of the Data Collector. Issue the following command from the console of the Data Collector:

```
curl -k "https://ip-address-of-vcenter-server/sdk/vimService.wsdl"
```

If the web service is running and the port is not blocked by a firewall, an XML document will be returned.

## Creating a Read-Only User Account

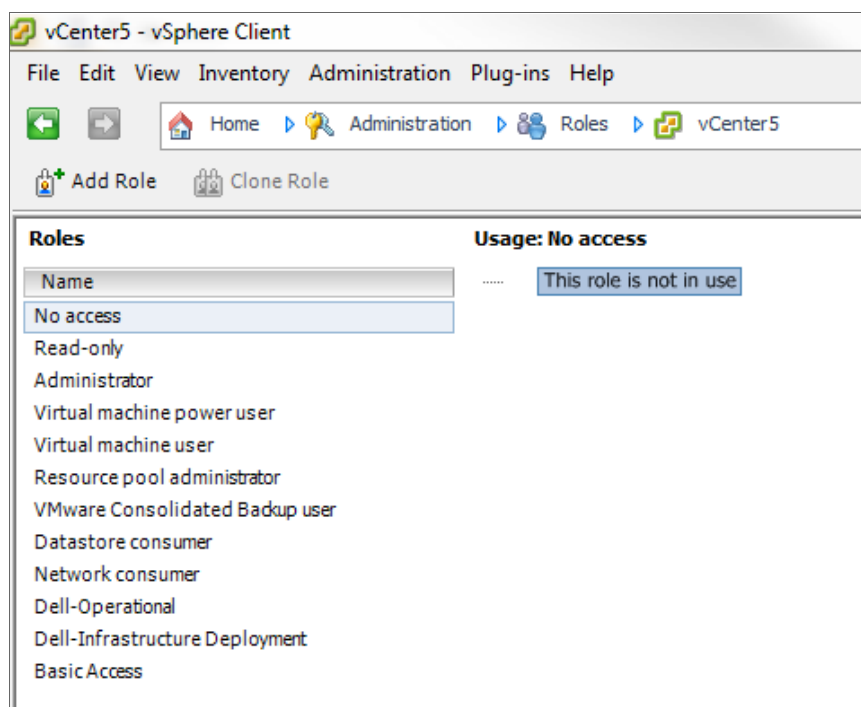
For vCenter 5.0 and earlier, the VMware vCenter web service uses the user groups and/or active directory users configured on the Windows Server on which vCenter is installed.

For vCenter 5.1, the VMware vCenter web service uses the user groups and/or active directory users configured on the VMware SSO server.

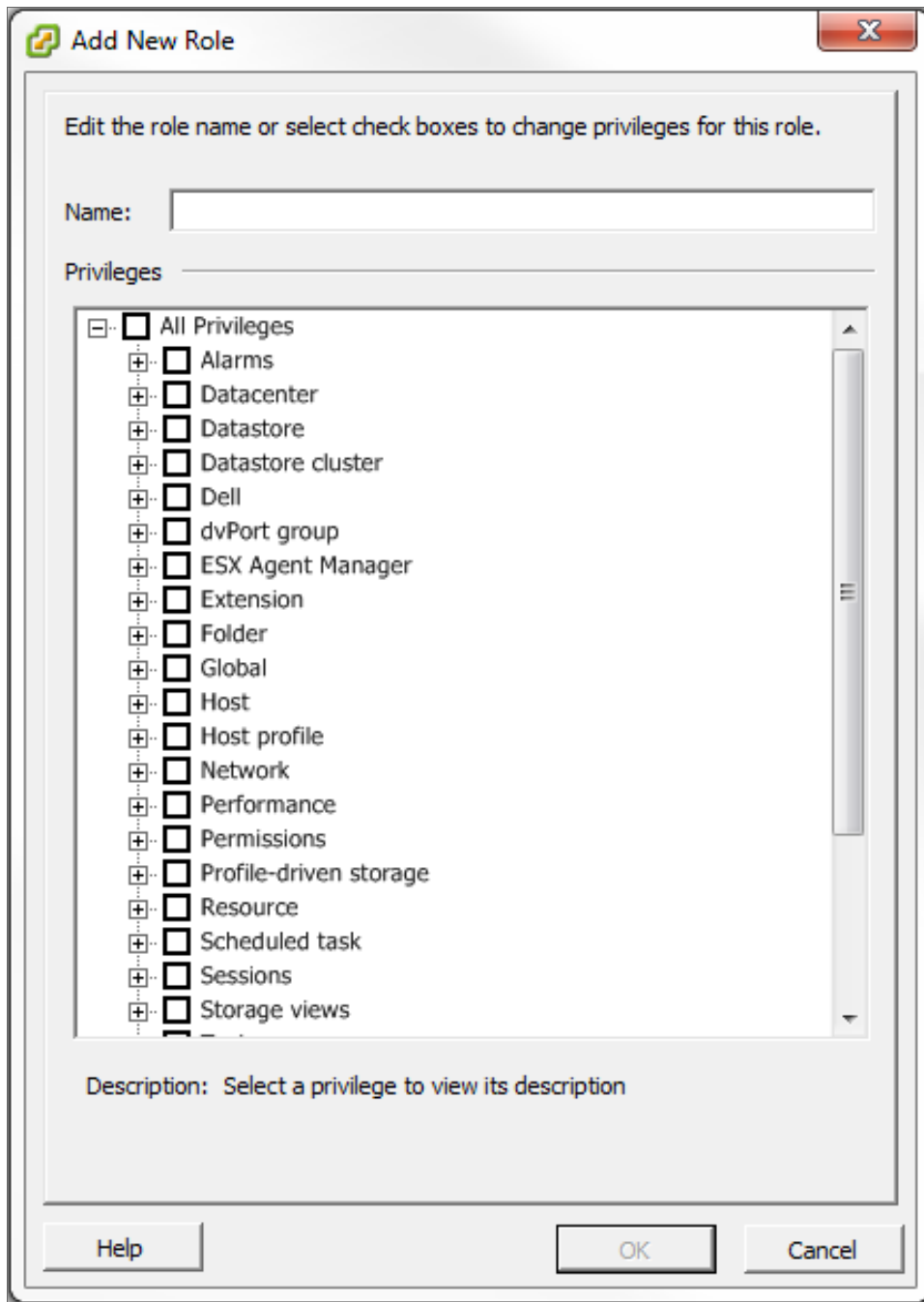
Administrative users are the only default user type that have the level of access the ScienceLogic platform requires to collect data from the VMware vCenter web service. If you do not want to use the username and password of an administrative user in the SOAP/XML credential, you can set up a custom user role with the specific read-only access the ScienceLogic platform requires to the VMware vCenter web service.

To create a custom user role that grants the read-only access the ScienceLogic platform requires, perform the following steps:

1. Log in to the vCenter server as an administrator using the VMware vSphere client.
2. In the menu at the top of the page, click View > Administration > Roles. The **Roles** page appears:



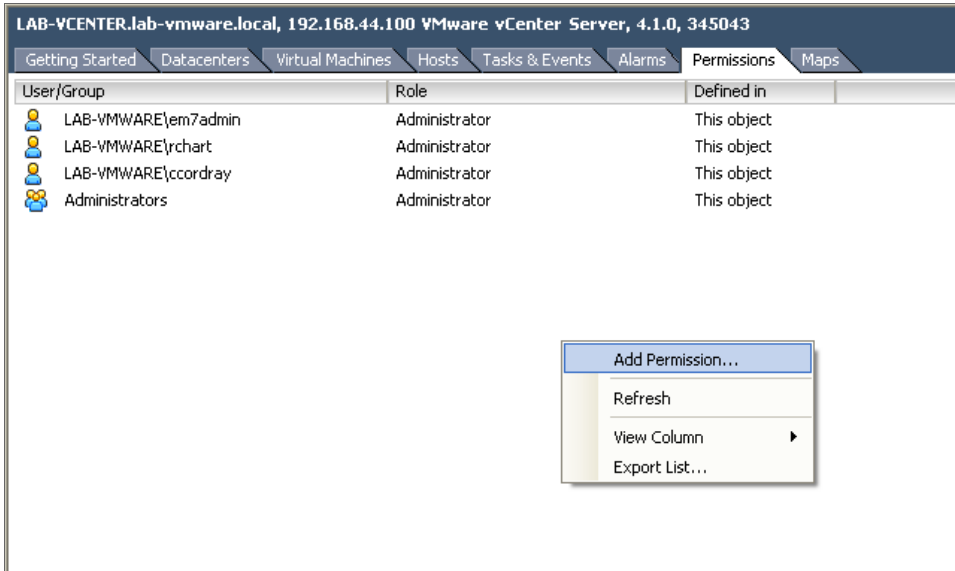
3. Click the [Add Role] button. The **Add New Role** page appears:



4. Enter "ScienceLogic" in the **Name** field.
5. Expand the **Storage views** section in the **Privileges** pane and select the **View** checkbox.
6. Click the [OK] button.

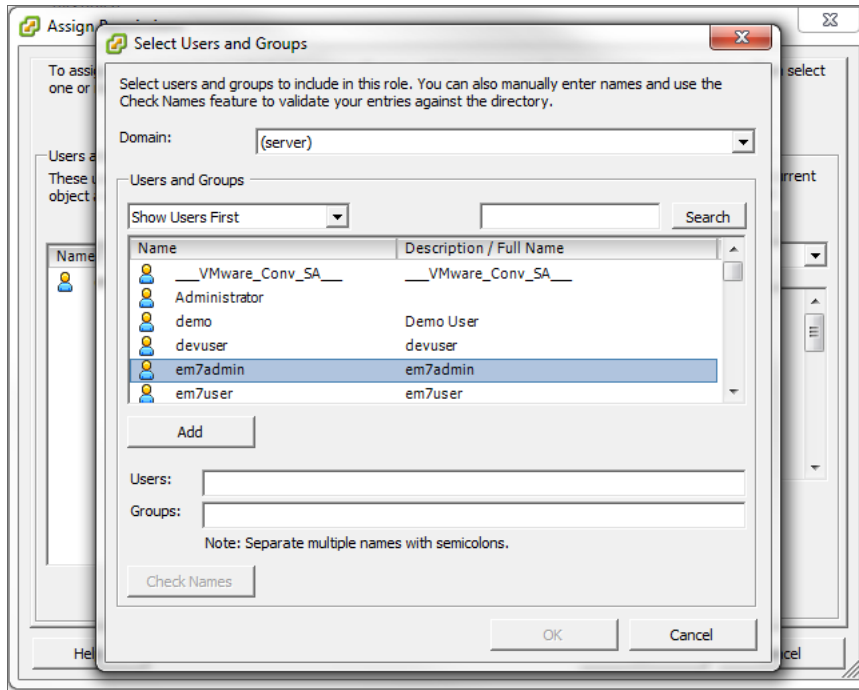
To assign the custom role to a user account, perform the following steps:

1. Log in to the vCenter server as an administrator using the VMware vSphere client.
2. In the vSphere client, ensure the vCenter server is selected in the left pane.
3. Click the **[Permissions]** tab in the main pane.

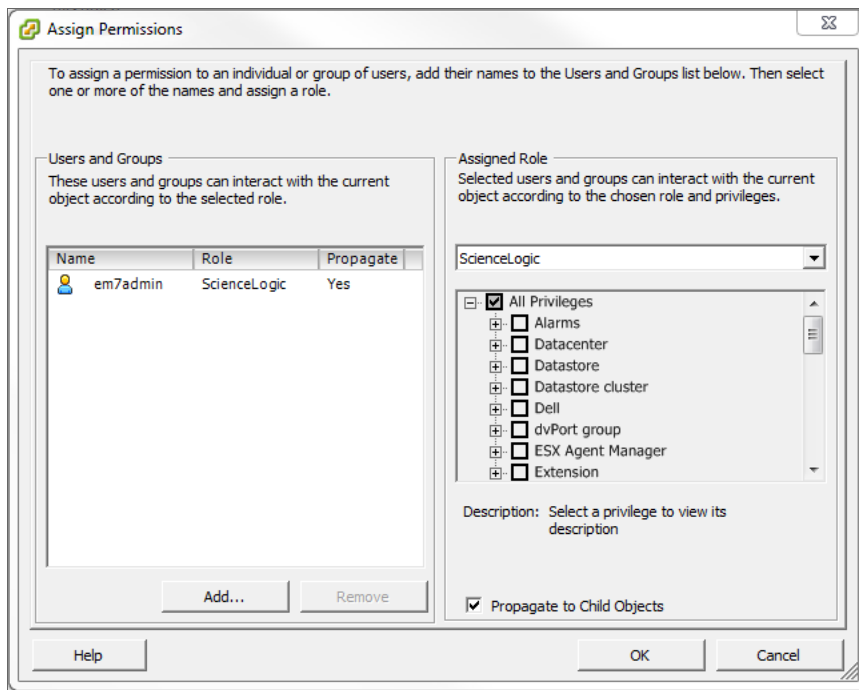


4. Right click in the main pane, then select *Add Permission...*. The **Assign Permissions** window appears.

- In the **Assigned Role** drop-down list, select the *ScienceLogic* role that you created in the previous section. Click the **[Add]** button. The **Select Users and Groups** window appears.



- From the list of users, select the user or group you want to assign the required permissions to, then click the **[Add]** button, followed by the **[OK]** button. The **Select Users and Groups** pop-up window closes.



7. In the **Assign Permissions** pop-up window, ensure that the user or group you selected is highlighted in the **Users and Groups** select list, and that the **Propagate to Child Objects** checkbox is checked.
8. Click the **[OK]** button.

To test that the user that you configured works with the VMware web service, navigate to the following URL in a browser window:

```
https://ip-address-of-vmware-server/mob
```

When prompted, enter the username and password you created for the platform to access the VMware Web Service. If the user is configured correctly, the following page appears:

Home		Logout
Managed Object Type: <b>ManagedObjectReference:ServiceInstance</b> Managed Object ID: <b>ServiceInstance</b>		
<b>Properties</b>		
NAME	TYPE	VALUE
capability	Capability	<a href="#">capability</a>
content	ServiceContent	<a href="#">content</a>
serverClock	dateTime	"2012-04-13T21:23:28.391016Z"
<b>Methods</b>		
RETURN TYPE	NAME	
dateTime	<a href="#">CurrentTime</a>	
HostVMotionCompatibility[]	<a href="#">QueryVMotionCompatibility</a>	
ServiceContent	<a href="#">RetrieveServiceContent</a>	
ProductComponentInfo[]	<a href="#">RetrieveProductComponents</a>	
Event[]	<a href="#">ValidateMigration</a>	

If the user is not configured correctly, you will be prompted again for a username and password.


## Configuring a SOAP/XML Credential

To use the Dynamic Applications in the *VMware: vSphere Base Pack PowerPack*, you must configure a SOAP/XML credential for the VMware web service. The *VMware: vSphere Base Pack PowerPack* includes the following templates for SOAP/XML credentials that you can edit for use with your vCenter server:

- VMware Server Example (for use with vCenter Server versions 4.x and 5.x)
- VMware Server vCenter 6 Example (for use with vCenter Server version 6.x)

To modify either of the templates, perform the following steps:

1. Go to the **Credential Management** page (System > Manage > Credentials).

- Click the wrench icon (  ) for the "VMware Server Example" or "VMware Server vCenter 6 Example" credential. The **Credential Editor** modal page appears:

- Supply values in the following fields:

- **Profile Name**. Enter a new name for the credential.
- **Embed Value [%1]**. Enter the username the platform will use to connect to the VMware web service.
- **Embedded Password [%P]**. Enter the password the platform will use to connect to the VMware web service.
- **Embed Value [%3]**. Do one of the following, based on the vCenter system that you want to monitor:
  - If you are monitoring a vCenter 6.x system that uses SSO for authentication, enter "https://<sso-server ip-address>/sts/STSService/vc6.local" in this field, replacing "<sso-server ip-address>" with the IP address of the SSO server used by the vCenter system.
  - If you are monitoring a vCenter 5.x system that uses SSO for authentication, enter "https://<sso-server ip-address>:7444/ims/STSService" in this field, replacing "<sso-server ip-address>" with the IP address of the SSO server used by the vCenter system.
  - If you are monitoring a vCenter 5.x system and want to use the traditional, non-SSO authentication method, do not enter a value in this field.

**NOTE:** In some cases, the SSO server IP address will be the same as the vCenter server.

- Click the **[Save As]** button to save your changes as a new credential.



## Testing the VMware Credential

The ScienceLogic platform includes a Credential Test for VMware. Credential Tests define a series of steps that the platform can execute on demand to validate whether a credential works as expected.

The VMware Credential Test can be used to test a SOAP/XML credential for monitoring VMware using the Dynamic Applications in the VMware: vSphere Base Pack PowerPack. The VMware Credential Test performs the following steps:

- **Test Reachability.** Attempts to reach the vCenter server using ICMP.
- **Attempt VMware Connection.** Attempts to connect to the VMware service using the account specified in the credential.

To test the VMware credential:

1. Go to the **Credential Test Management** page (System > Customize > Credential Tests).
2. Locate the **VMware Credential Test** and click its lightning bolt icon (⚡). The **Credential Tester** modal page appears:


3. Supply values in the following fields:
  - **Test Type.** This field is pre-populated with the credential test you selected.
  - **Credential.** Select the credential to test. This drop-down list includes only credentials that you have access to that can be tested using the selected credential test.
  - **Hostname/IP.** Type the IP address for the vCenter server.
  - **Collector.** Select the All-In-One Appliance or Data Collector that will run the test.
4. Click the **[Run Test]** button. The **Test Credential** window appears, displaying a log entry for each step in the credential test. The steps performed are different for each credential test. The log entry for each step includes the following information:
  - **Step.** The name of the step.
  - **Description.** A description of the action performed during the step.
  - **Log Message.** The result of the step for this credential test.

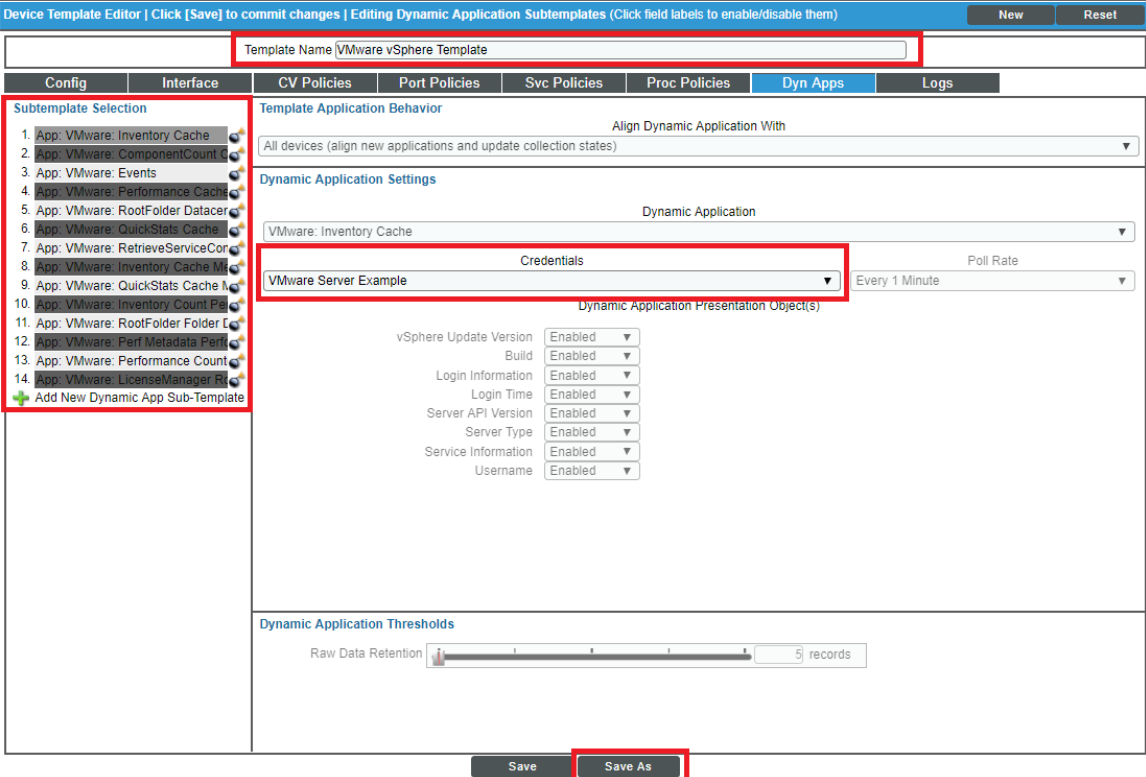
- **Status.** Whether the result of this step indicates the credential or the network environment is configured correctly (Passed) or incorrectly (Failed).
- **Step Tip.** Hover over the question mark icon ( ? ) with your mouse to display the tip text. The tip text recommends what to do to change the credential or the network environment if the step has a status of "Failed".

## Configuring a VMware Device Template

A **device template** allows you to save a device configuration and apply it to multiple devices. The VMware: vSphere Base Pack PowerPack includes the "VMware vSphere Template." If you configure and apply this device template when you discover your vCenter server, the ScienceLogic platform aligns the appropriate Dynamic Applications to the discovered vCenter server device.

To configure the VMware device template:

1. Go to the **Configuration Templates** page (Registry > Devices > Templates).
2. Locate the "VMware vSphere Template" and click its wrench icon (  ). The **Device Template Editor** page appears.
3. Click the **[Dyn Apps]** tab. The **Editing Dynamic Application Subtemplates** page appears.
4. Complete the following fields:



The screenshot shows the "Device Template Editor" interface for the "VMware vSphere Template". The "Dyn Apps" tab is active, displaying the "Editing Dynamic Application Subtemplates" page. The interface includes a "Subtemplate Selection" list on the left, a "Template Application Behavior" section with a dropdown for "Align Dynamic Application With" (set to "All devices"), and a "Dynamic Application Settings" section. In the "Dynamic Application Settings", the "Dynamic Application" is set to "VMware: Inventory Cache", the "Credentials" are set to "VMware Server Example", and the "Poll Rate" is "Every 1 Minute". Below this, there are several "Dynamic Application Presentation Object(s)" with "Enabled" status for vSphere Update Version, Build, Login Information, Login Time, Server API Version, Server Type, Service Information, and Username. At the bottom, there is a "Dynamic Application Thresholds" section with a "Raw Data Retention" slider set to 5 records. The "Save" and "Save As" buttons are highlighted with red boxes.

- **Template Name.** Type a new name for the device template.
  - **Credentials.** Select the SOAP/XML credential that you created for VMware.
5. Click the next Dynamic Application listed in the **Subtemplate Selection** section on the left side of the page and then select the VMware SOAP/XML credential in the **Credentials** field.
  6. Repeat step 5 until the you have selected the VMware SOAP/XML credential in the **Credentials** field for all of the Dynamic Applications listed in the **Subtemplate Selection** section.
  7. Click [**Save As**].

## Discovering a vCenter Server

---

### Overview

The following sections describe how to discover a vCenter server and component devices for monitoring by the ScienceLogic platform using the VMware: vSphere Base Pack PowerPack.

<i>Discovering a vCenter Server</i> .....	20
<i>Configuring the VMware Dynamic Applications</i> .....	22
<i>Configuring the "VMware: Events" Dynamic Application</i> .....	22
<i>Configuring the Polling Frequency for VMware Performance Dynamic Applications</i> .....	23
<i>Configuring the "VMware: Remove Session Cookies" Dynamic Application</i> .....	24
<i>Viewing Component Devices</i> .....	25
<i>Relationships with Other Types of Component Devices</i> .....	28
<i>Determining Availability for Component Devices</i> .....	28

---

### Discovering a vCenter Server


To create and run a discovery session that will discover a vCenter server, perform the following steps:


1. Go to the **Discovery Control Panel** page (System > Manage > Discovery).

- Click the **[Create]** button to create a new discovery session. The **Discovery Session Editor** modal page appears:

- Enter values in the following fields:

- IP Address Discovery List.** Type the IP address for the vCenter server.
- SNMP Credentials.** If the Windows server that hosts the vCenter server is SNMP-enabled, then select the SNMP credential for the vCenter server in this field. If you do not select an SNMP credential in this field, then you must select the **Discover Non-SNMP** checkbox.
- Other Credentials.** Select the SOAP/XML credential that you created for VMware.
- Discover Non-SNMP.** If the Windows server that hosts the vCenter server is not SNMP-enabled, then you must select this checkbox.
- Apply Device Template.** Select the device template that you created for VMware.

- Optionally, you can enter values in the other fields on this page. For more information about the other fields on this page, see the **Discovery & Credentials** manual.
- Click the **[Save]** button and then close the **Discovery Session Editor** modal page.
- The discovery session you created will appear at the top of the **Discovery Control Panel** page. Click its lightning-bolt icon (  ) to run the discovery session.

7. The **Discovery Session** window appears. When the vCenter server is discovered, click its device icon () to view the **Device Properties** page for the vCenter server.

---

## Configuring the VMware Dynamic Applications

The following sections describe how to configure some of the Dynamic Applications in the *VMware: vSphere Base Pack PowerPack*.

### Configuring the "VMware: Events" Dynamic Application

The "VMware: Events" Dynamic Application is designed to collect events from VMware devices using the VMware API and insert those events into the device log of the aligned vCenter server.



For the platform to insert VMware events into the device log, the Data Collector that monitors the vCenter server must be configured to process API events. For instructions on how to configure a Data Collector to process API events, see the **Global Settings** chapter in the **System Administration** manual.

You can specify which types of events the "VMware: Events" Dynamic Application collects by editing the event dictionary Python script located in the "VMware Event Collection" snippet of the "VMware: Events" Dynamic Application. This event dictionary includes a series of rows that look like this:

```
"ClusterStatusChangedEvent": {"count": 0, "countAll": 0, "collect": True},
```

Each row begins with an event type. This event type value must match the "eventTypeid" value the VMware API uses in its "EventFilterSpec" data object to indicate which events should be collected. For more information, see [VMware's documentation on the "EventFilterSpec" data object](#).

To specify which events the "VMware: Events" Dynamic Application collects:

1. Go to the **Dynamic Applications Manager** page (System > Manage > Applications).
2. Click the wrench icon () for the "VMware: Events" Dynamic Application. The **Dynamic Applications Properties Editor** page appears.
3. Click the **[Snippets]** tab. The **Dynamic Applications Snippet Editor & Registry** page appears.
4. Click the wrench icon () for the "VMware Event Collection" snippet.

5. Locate the section that looks like this:

```
event_dict = {
    "AlarmStatusChangedEvent": {"count": 0, "countAll": 0, "collect": True},
    "ClusterStatusChangedEvent": {"count": 0, "countAll": 0, "collect": True},
    "HostStatusChangedEvent": {"count": 0, "countAll": 0, "collect": True},
    "UserLoginSessionEvent": {"count": 0, "countAll": 0, "collect": True},
    "UserLogoutSessionEvent": {"count": 0, "countAll": 0, "collect": True},
    "VmEvent": {"count": 0, "countAll": 0, "collect": True},
    "VmMigratedEvent": {"count": 0, "countAll": 0, "collect": True},
    "other": {"count": 0, "countAll": 0, "collect": True},
}
```

6. Following the format shown above, add new rows for any additional event types you want to include in the event dictionary or delete the rows of any event types you want to remove from the event dictionary.

7. For each event type listed in the event dictionary:

- If you want the Dynamic Application to collect that event type, change the "collect" value to "True". For example:

```
"AlarmStatusChangedEvent": {"count": 0, "countAll": 0, "collect": True},
```

- If you do not want the Dynamic Application to collect that event type, change the "collect" value to "False". For example:

```
"UserLoginSessionEvent": {"count": 0, "countAll": 0, "collect": False},
```

- If you want the Dynamic Application to collect all event types, locate the "other" line and change the "collect" value to "True". For example:

```
"other": {"count": 0, "countAll": 0, "collect": True},
```

**NOTE:** Changing the "other" "collect" value to "True" overrides any event types with a "collect" value of "False". If you do not want to collect all event types, then you must either remove the "other" row or change its "collect" value to "False".


8. Click the **[Save]** button.

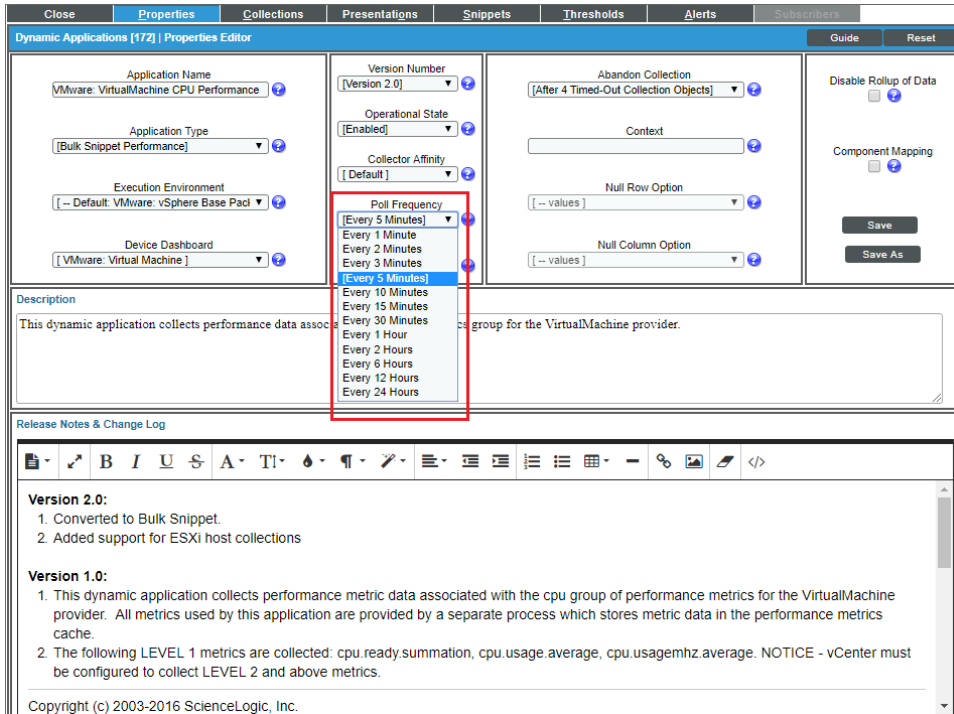
**TIP:** If you have edited the "VMware Event Collection" snippet and want to maintain your event\_dict settings the next time the PowerPack is upgraded, you must copy the event dictionary Python script, install the new version of the PowerPack, and then follow the steps in this section to paste the settings into the "VMware Event Collection" snippet in the upgraded version of the "VMware: Events" Dynamic Application.

## Configuring the Polling Frequency for VMware Performance Dynamic Applications

In the *VMware: vSphere Base Pack PowerPack*, some of the Dynamic Applications of require that their **Poll Frequency** be set to a specific time.

To set the polling frequency:

1. Go to the **Dynamic Applications Manager** page (System > Manage > Applications).
2. Search for the Dynamic Application whose polling frequency you want to update and click on its wrench icon (  ).
3. In the **Dynamic Applications Properties Editor**, use the drop-down in the **Poll Frequency** field to select the polling frequency.



4. The polling frequency should be set as follows for the following Dynamic Applications:
  - **VMware: VirtualMachine CPU Performance.** 5 minutes.
  - **VMware: VirtualMachine Datastore Performance.** 5 minutes.
  - **VMware: VirtualMachine Disk Performance.** 5 minutes.
  - **VMware: QuickStats Cache.** 5 minutes.
  - **VMware: Inventory Cache.** 1 minute.
  - **VMware: Datastore Space Performance.** No lower than 15 minutes.

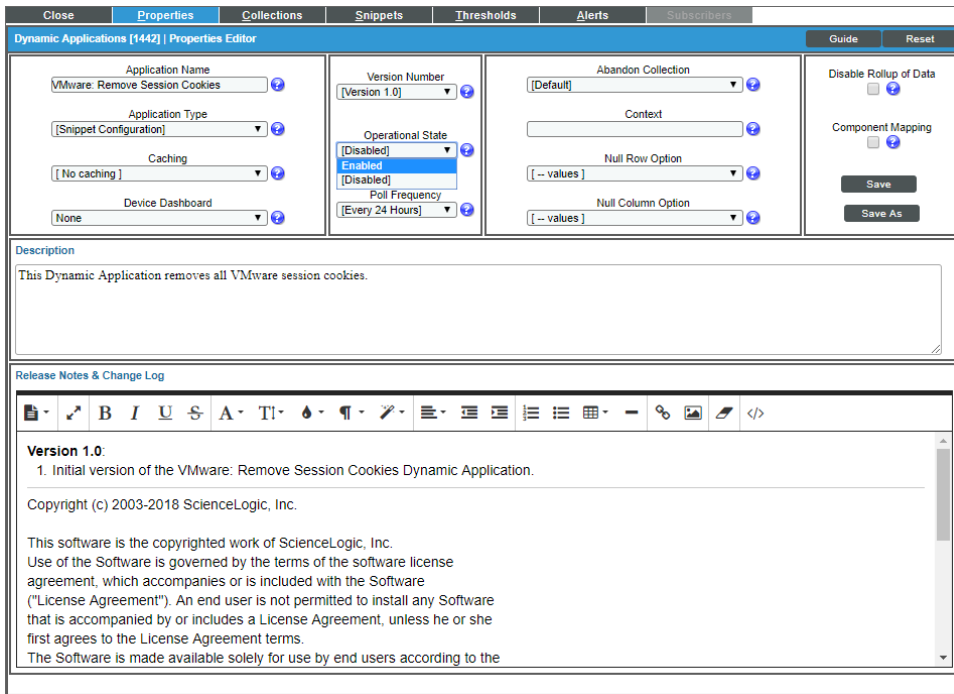
## Configuring the "VMware: Remove Session Cookies" Dynamic Application

The "VMware: Remove Session Cookies" Dynamic Application allows users to force a new API session to collect new objects.

To execute the Dynamic Application:



1. Go to the **Dynamic Applications Manager** page (System > Manage > Applications).
2. Find the "VMware: Remove Session Cookies" Dynamic Application and click on its wrench icon (🔧).
3. In the **Dynamic Applications Properties Editor** page, click the **Operational State** drop-down and select *Enabled*.




4. Align the "VMware: Remove Session Cookies" Dynamic Application to any VMware root device.
5. On the root device, go to the **[Collections]** tab on the **Device Properties** page and run the "VMware: Remove Session Cookies" Dynamic Application you just aligned by clicking the lightning bolt icon (⚡).
6. After running the Dynamic Application, check the session logs. If you get an "Failed to retrieve security token from vSphere SSO server" error, run the Dynamic Application again.
7. When the "VMware: Remove Session Cookies" Dynamic Application has successfully run, change its **Operational State** back to *Disabled*.

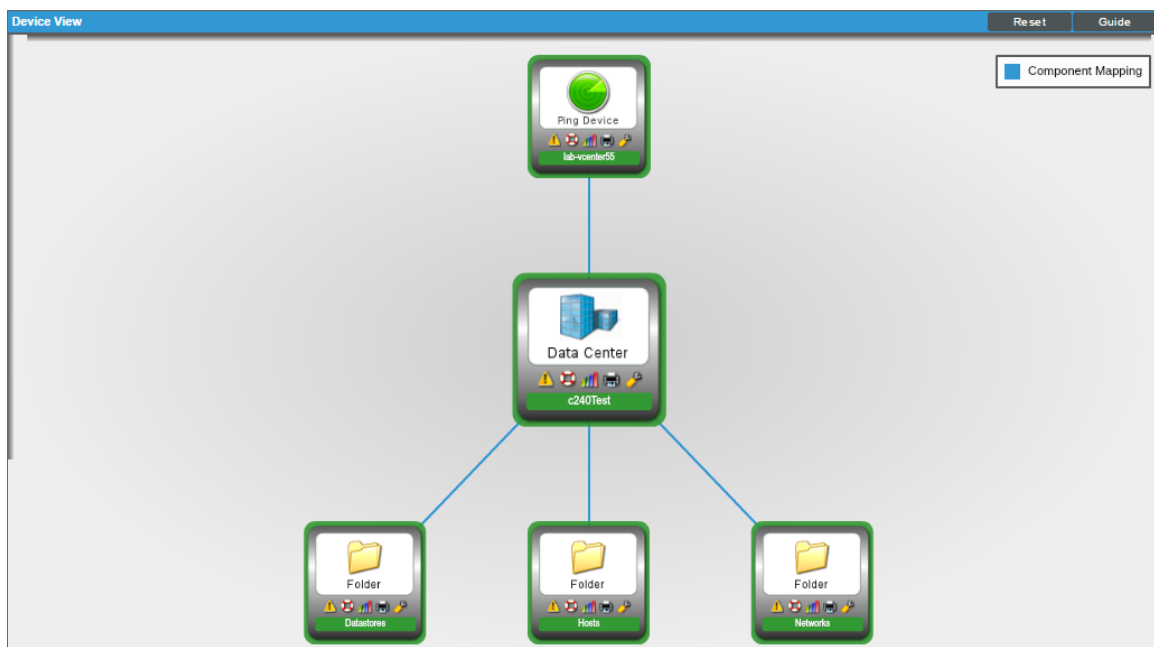
## Viewing Component Devices

When the platform performs collection for the "VMware: RootFolder Datacenter Discovery" Dynamic Application, the platform will create component devices for the components managed by the vCenter server and align other Dynamic Applications to those component devices. Some of the Dynamic Applications aligned to the component devices are also used to create additional component devices. All component devices appear on the **Device Manager** page.

**NOTE:** During initial discovery, the ScienceLogic platform requests information about 200 devices per poll period until all component devices are discovered. After initial discovery, the ScienceLogic platform requests only the changes from the previously collected topology. If you have a large VMware infrastructure, it can take several collection cycles after the initial collection of the "VMware: RootFolder Datacenter Discovery" Dynamic Application for all component devices to be discovered.

In addition to the **Device Manager** page, you can view the vCenter server and all associated component devices in the following places in the user interface:

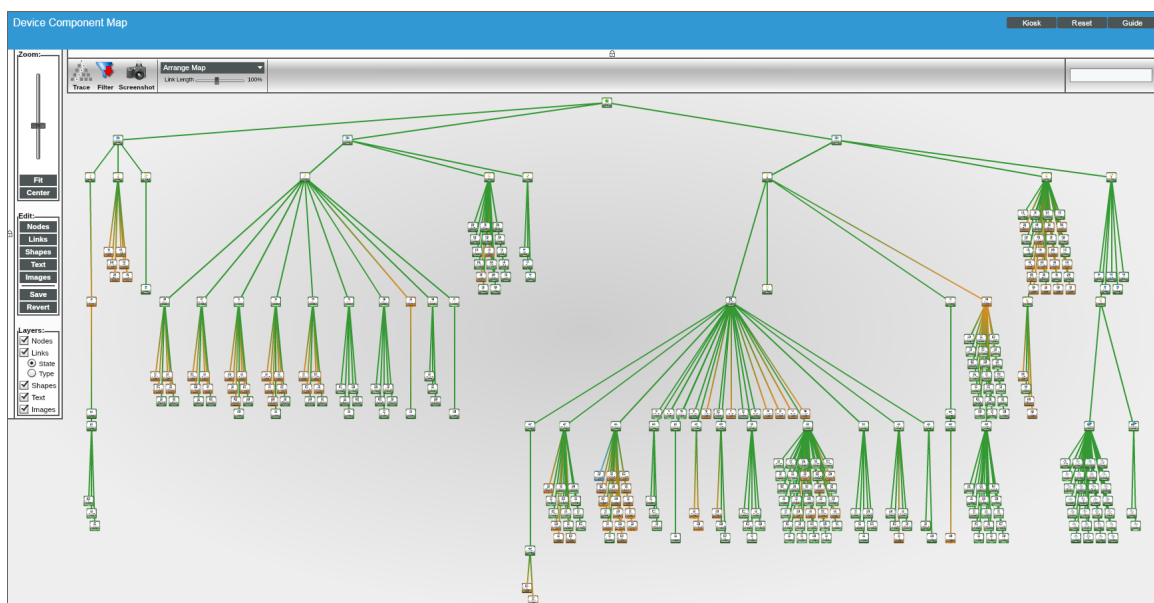
- The **Device View** modal page (click the bar-graph icon  for a device, then click the **Topology** tab) displays a map of a particular device and all of the devices with which it has parent-child relationships. Double-clicking any of the listed devices reloads the page to make the selected device the primary device:



- The **Device Components** page (Registry > Devices > Device Components) displays a list of all root devices and component devices discovered by the platform. The **Device Components** page displays all root devices and component devices in an indented view, so you can easily view the hierarchy and relationships between child devices, parent devices, and root devices. To view the component devices associated with a vCenter server, find the vCenter server and click its plus icon (+):

Device Name	IP Address	Device Category	Device Class   Sub-class	DID	Organization	Current State	Collection Group	Collection State
lab-vcenter55	10.0.0.55	Pingable	Ping   ICMP	98	TestOrg_VMware	Healthy	CUG_Automation	Active
c240Test	--	Infrastructure	VMware   Datacenter	101	TestOrg_VMware	Healthy	CUG_Automation	Active
Datastores	--	Infrastructure	VMware   Folder	109	TestOrg_VMware	Healthy	CUG_Automation	Active
Hosts	--	Infrastructure	VMware   Folder	108	TestOrg_VMware	Healthy	CUG_Automation	Active
istheshsbc01.eng.sciencelogic.local	--	VMware	VMware   Host Server	126	TestOrg_VMware	Healthy	CUG_Automation	Active
istheshsbc02.eng.sciencelogic.local	--	VMware	VMware   Host Server	124	TestOrg_VMware	Major	CUG_Automation	Active
istheshsbc03.eng.sciencelogic.local	--	VMware	VMware   Host Server	128	TestOrg_VMware	Healthy	CUG_Automation	Active
istheshsbc04.eng.sciencelogic.local	--	VMware	VMware   Host Server	120	TestOrg_VMware	Healthy	CUG_Automation	Active
istheshsbc05.eng.sciencelogic.local	--	VMware	VMware   Host Server	122	TestOrg_VMware	Healthy	CUG_Automation	Active
istheshsbc06.eng.sciencelogic.local	--	VMware	VMware   Host Server	1001	TestOrg_VMware	Healthy	CUG_Automation	Active
istheshsbc07.eng.sciencelogic.local	--	VMware	VMware   Host Server	1002	TestOrg_VMware	Healthy	CUG_Automation	Active
istheshsbc08.eng.sciencelogic.local	--	VMware	VMware   Host Server	1000	TestOrg_VMware	Healthy	CUG_Automation	Active
istheshsbc09.eng.sciencelogic.local	--	VMware	VMware   Host Server	1008	TestOrg_VMware	Healthy	CUG_Automation	Active
istheshsbc10.eng.sciencelogic.local	--	VMware	VMware   Host Server	1007	TestOrg_VMware	Healthy	CUG_Automation	Active
Networks	--	Infrastructure	VMware   Folder	110	TestOrg_VMware	Healthy	CUG_Automation	Active
FlexPod	--	Infrastructure	VMware   Datacenter	99	TestOrg_VMware	Healthy	CUG_Automation	Active
Migration	--	Infrastructure	VMware   Datacenter	100	TestOrg_VMware	Healthy	CUG_Automation	Active

- The **Component Map** page (Views > Device Maps > Components) allows you to view devices by root node and view the relationships between root nodes, parent components, and child components in a map. This makes it easy to visualize and manage root nodes and their components. The ScienceLogic platform automatically updates the **Component Map** as new component devices are discovered. The platform also updates each map with the latest status and event information. To view the map for a vCenter server, go to the **Component Map** page and select the map from the list in the left NavBar. To learn more about the **Component Map** page, see the **Views** manual.



## Relationships with Other Types of Component Devices

In addition to the parent/child relationships between component devices, the following relationships are automatically created by the Dynamic Applications in the *VMware: vSphere Base Pack PowerPack*:

- VMware Virtual Machines and VMware Datastores
- VMware Virtual Machines and VMware Networks
- VMware Virtual Machines and Cisco Cloud Center
- VMware VirtualApps and VMware Networks
- VMware Hosts and VMware Datastores
- VMware Hosts and VMware Networks
- VMware Hosts and VMware Virtual Machines
- VMware Datastore Clusters and VMware Virtual Machines
- VMware Datastore Clusters and VMware Host Clusters
- VMware Datastore Clusters and VMware Hosts

The ScienceLogic platform can also automatically build relationships between VMware component devices and other associated devices. If you discover one or more of the following:

- An EMC VNX device using the Dynamic Applications in the *EMC: VNX PowerPack*
- A NetApp device using the Dynamic Applications in the *NetApp Base Pack PowerPack*
- A UCS device using the Dynamic Applications in the *Cisco: UCS PowerPack*

The platform automatically creates relationships between the following types of component devices, where appropriate:

- EMC VNX LUNs and VMware Datastores
- NetApp LUNs and VMware Datastores
- NetApp Volumes and VMware Datastores
- VMware Hosts and UCS Service Profiles

---

## Determining Availability for Component Devices

The Dynamic Applications that discover the component devices managed by a vCenter server include collection objects that define the availability status of those component devices.

The following types of component devices are considered unavailable if a vCenter server reports that the power state is off:

- Compute Resource

- Host Server (i.e., ESX and ESXi Servers)
- Virtual Machine

The following types of component devices are considered unavailable if a vCenter server loses its connection to an ESXi hypervisor host server:

- Host Server
- Virtual Machine

The following types of component devices are considered unavailable if a vCenter server does not include information about those components in the appropriate response:

- Distributed Virtual Switch
- Distributed Virtual Portgroup
- Folder
- Network
- Resource Pool

The following types of component devices are considered unavailable based on other conditions:

- **Datastore.** A datastore is considered unavailable if it is not accessible. A datastore is not accessible if no hosts have successfully mounted the datastore volume.
- **Cluster.** A cluster is considered unavailable if no hosts are associated with the cluster or all hosts associated with the cluster are powered off.

When a VMware device is shut down, an event is created to alert the user that the device is unavailable. If you turn off VMware devices intentionally, you can suppress these availability events.

To suppress these events:

- Create a device group that contains the VMware devices for which you want to suppress availability events.
- Suppress that device group in the relevant Event Policies.

To create the device group:

1. Go to the **Device Groups** page (Registry > Devices > Device Groups).

2. Click the **[Create]** button. The **Device Group Editor** page appears:

The screenshot shows the 'Device Group Editor' interface with the following components:

- Device Group Name:** A text input field.
- Force Child Visibility?:** A dropdown menu currently set to '[ No ]'.
- Sharing Permissions:** A dropdown menu currently set to '[ Private (visible to you only) ]'.
- Icon:** A cloud icon.
- Visibility:** A list of options including Maps/Views, Config Policies/Bulk Edit, Notification/Automation, Discovery, Device Schedules, Event Suppression, and RSS Feeds.
- Permission Keys:** A list of keys including EM7 System Administration, Grant All, Ticket Alt Test, IT Services, lb\_ITSM, and mh-IT Services - View.
- Static Devices and Groups:** A table with columns for Device Name, Class | Sub-class, ID, Organization, Device Group Name, ID, Devices, Groups, and Rules. It shows 'No devices in current device group.' and 'No sub-groups in current device group.'
- Dynamic Rules:** A section for 'Dynamic Rules | Rules Found [0]' with a 'Selector Type' field and 'Selector Targets' field. It shows 'No dynamic rules in current device group.'
- Buttons:** 'Save' at the bottom center, 'Matched' at the bottom right, and 'Del' and 'Add' buttons for the lists.

3. Enter values in the following fields:

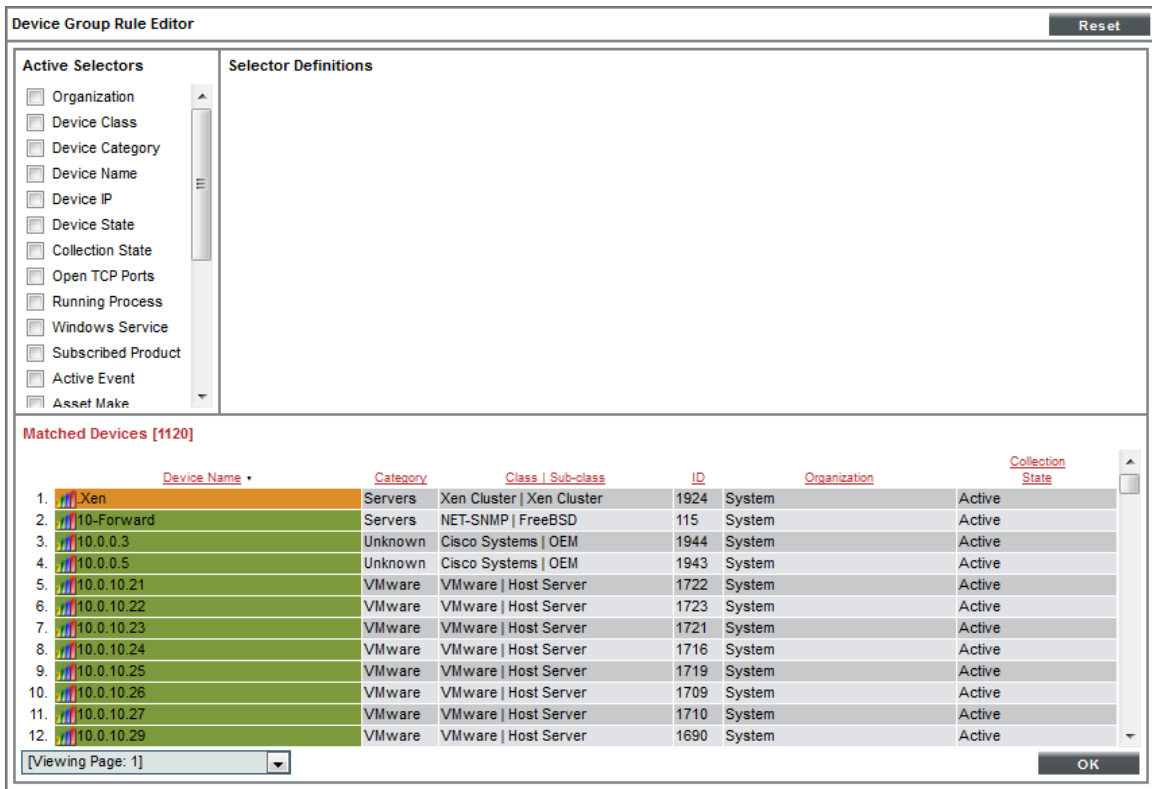
- **Device Group Name.** In this field you can enter a customized Device Group Name. For example, "Event Suppressed VMs".
- **Visibility.** Select *Event Suppression*.

- If you want to suppress one or a few individual devices, click the **[Add]** button under the **Static Devices and Groups** pane and select *Add Devices*. The **Device Alignment** modal page appears:

	Device Name	IP Address	Category	Class   Sub-class	ID	Organization	<input type="checkbox"/>	Action
1.	Xen	--	Servers	Xen Cluster   Xen Cluster	1924	System	<input type="checkbox"/>	
2.	10-Forward	10.20.30.195	Servers	NET-SNMP   FreeBSD	115	System	<input type="checkbox"/>	
3.	10.0.0.3	10.0.0.3	Unknown	Cisco Systems   OEM	1944	System	<input type="checkbox"/>	
4.	10.0.0.5	10.0.0.5	Unknown	Cisco Systems   OEM	1943	System	<input type="checkbox"/>	
5.	10.0.10.21	--	VMware	VMware   Host Server	1722	System	<input type="checkbox"/>	
6.	10.0.10.22	--	VMware	VMware   Host Server	1723	System	<input type="checkbox"/>	
7.	10.0.10.23	--	VMware	VMware   Host Server	1721	System	<input type="checkbox"/>	
8.	10.0.10.24	--	VMware	VMware   Host Server	1716	System	<input type="checkbox"/>	
9.	10.0.10.25	--	VMware	VMware   Host Server	1719	System	<input type="checkbox"/>	
10.	10.0.10.26	--	VMware	VMware   Host Server	1709	System	<input type="checkbox"/>	
11.	10.0.10.27	--	VMware	VMware   Host Server	1710	System	<input type="checkbox"/>	
12.	10.0.10.29	--	VMware	VMware   Host Server	1690	System	<input type="checkbox"/>	
13.	10.0.10.30	--	VMware	VMware   Host Server	1712	System	<input type="checkbox"/>	
14.	10.0.10.31	--	VMware	VMware   Host Server	1714	System	<input type="checkbox"/>	
15.	10.0.10.32	--	VMware	VMware   Host Server	1927	System	<input type="checkbox"/>	
16.	10.0.10.33	--	VMware	VMware   Host Server	1912	System	<input type="checkbox"/>	
17.	10.0.10.33	--	VMware	VMware   Host Server	1711	System	<input type="checkbox"/>	
18.	10.0.10.34	--	VMware	VMware   Host Server	1708	System	<input type="checkbox"/>	
19.	10.0.10.40	--	VMware	VMware   Host Server	1922	System	<input type="checkbox"/>	
20.	10.0.9.180	--	VMware	VMware   Host Server	1657	System	<input type="checkbox"/>	
21.	10.0.9.180	--	VMware	VMware   Host Server	1408	System	<input type="checkbox"/>	
22.	10.0.9.181	--	VMware	VMware   Host Server	1411	System	<input type="checkbox"/>	
23.	10.0.9.181	--	VMware	VMware   Host Server	1656	System	<input type="checkbox"/>	
24.	10.0.9.182	--	VMware	VMware   Host Server	1558	System	<input type="checkbox"/>	
25.	10.0.9.182	--	VMware	VMware   Host Server	1409	System	<input type="checkbox"/>	
26.	10.0.9.183	--	VMware	VMware   Host Server	1414	System	<input type="checkbox"/>	
27.	10.0.9.183	--	VMware	VMware   Host Server	1646	System	<input type="checkbox"/>	
28.	10.0.9.184	--	VMware	VMware   Host Server	1645	System	<input type="checkbox"/>	
29.	10.0.9.184	--	VMware	VMware   Host Server	1412	System	<input type="checkbox"/>	
30.	10.0.9.186	--	VMware	VMware   Host Server	1410	System	<input type="checkbox"/>	

- In the **Device Alignment** modal page, perform a search in the **Class | Sub-class** column for "Virtual Machine" to bring up the available VMware devices.
- Find the device(s) for which you want to suppress availability events and select their checkbox ()
- Click the **[Add/Remove]** button to add the device(s).

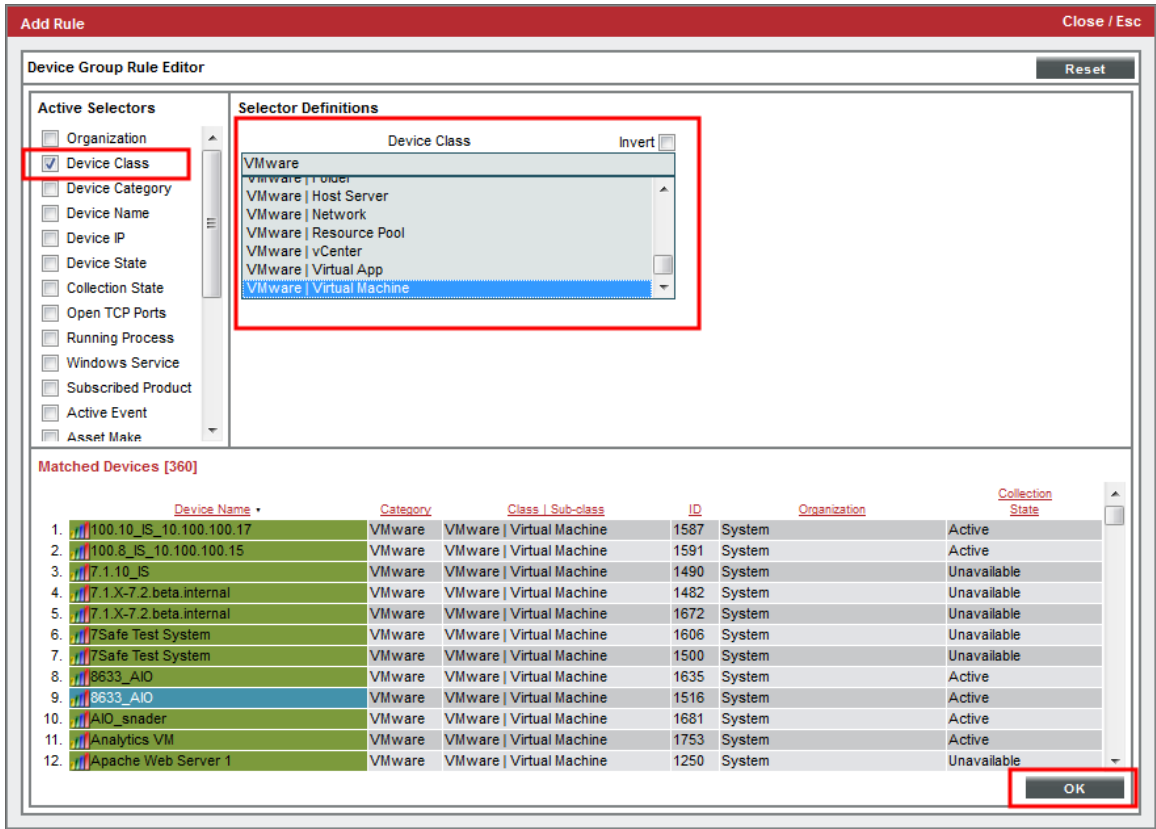
- To add all VM devices to the device group, click the **[Add]** button in the **Dynamic Rules** pane of the **Device Group Editor** page. The **Device Group Rule Editor** page appears:



- In the **Device Group Rule Editor** page, select the checkbox () for **Device Class** in the **Active Selectors** pane.



- In the **Selector Definitions** pane, the **Device Class** field appears. Perform a search for "VMware" in the **Device Class** field, and select **VMware | Virtual Machine**. All virtual machines will appear in the **Matched Devices** pane:

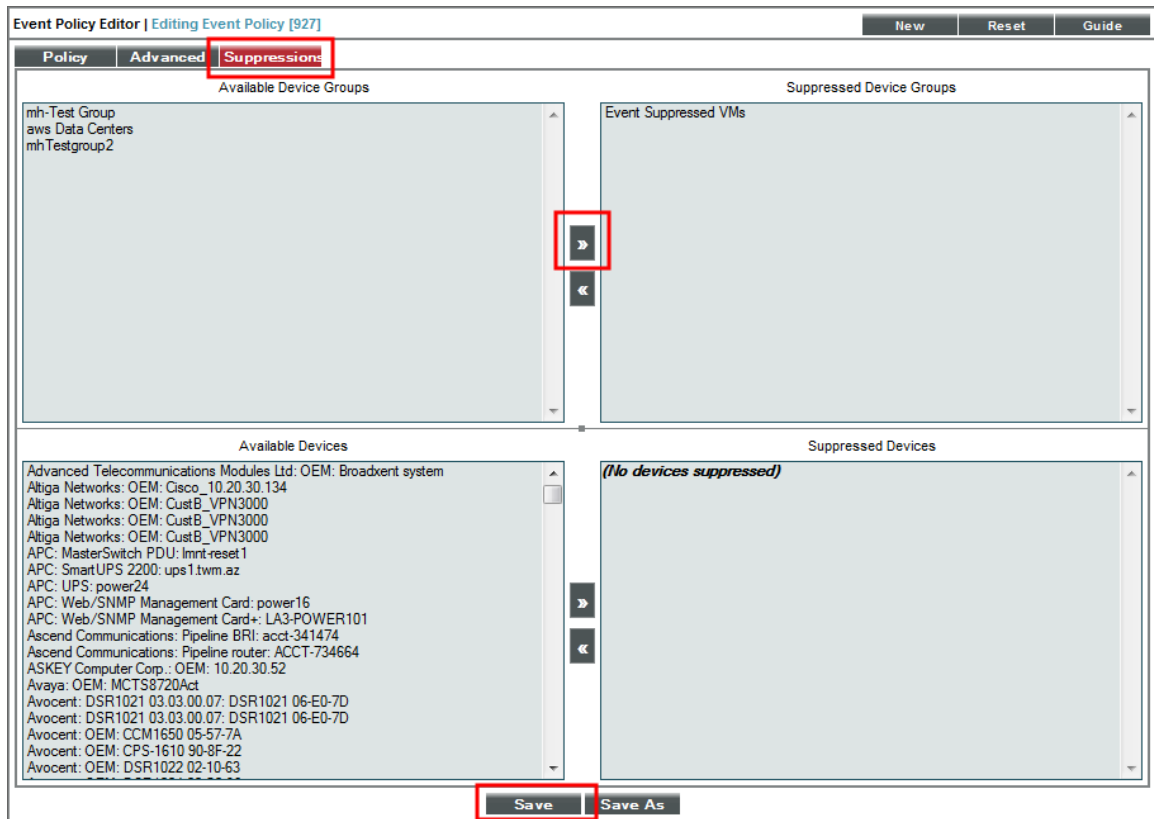


- Click the **[OK]** button. The Device Class will appear in the **Dynamic Rules** pane.

Next, you need to suppress two Event Policies for this Device Group. To do this:

- Go to the **Event Policy Manager** page (Registry > Events > Event Manager).
- Perform a search in the **Event Policy Name** column for "Availability".

3. Click the wrench icon (  ) for the **Poller: Availability Check Failed** policy. The **Event Policy Editor** page appears:



4. Click the **[Suppressions]** tab in the **Event Policy Editor** page.
5. In the **Available Device Groups** field, select the device group you created. In this example, you would select *Event Suppressed VMs*.
6. Click the right arrow button, [**>>**], and the device group moves to the **Suppressed Device Groups** field.
7. Click the **[Save]** button.
8. Repeat these steps for the **Poller: Availability Healthy** event policy to suppress events that will occur when a VMware device is turned back on again.

## VMware Dashboards

---

### Overview

The ScienceLogic platform includes the *VMware: vSphere Dashboards PowerPack*, which contains dashboards that display data collected from VMware systems.

In addition, the *VMware: vSphere Base Pack PowerPack* includes device dashboards that provide summary information for VMware component devices. Each of these device dashboards is aligned as the default device dashboard for its equivalent device class.

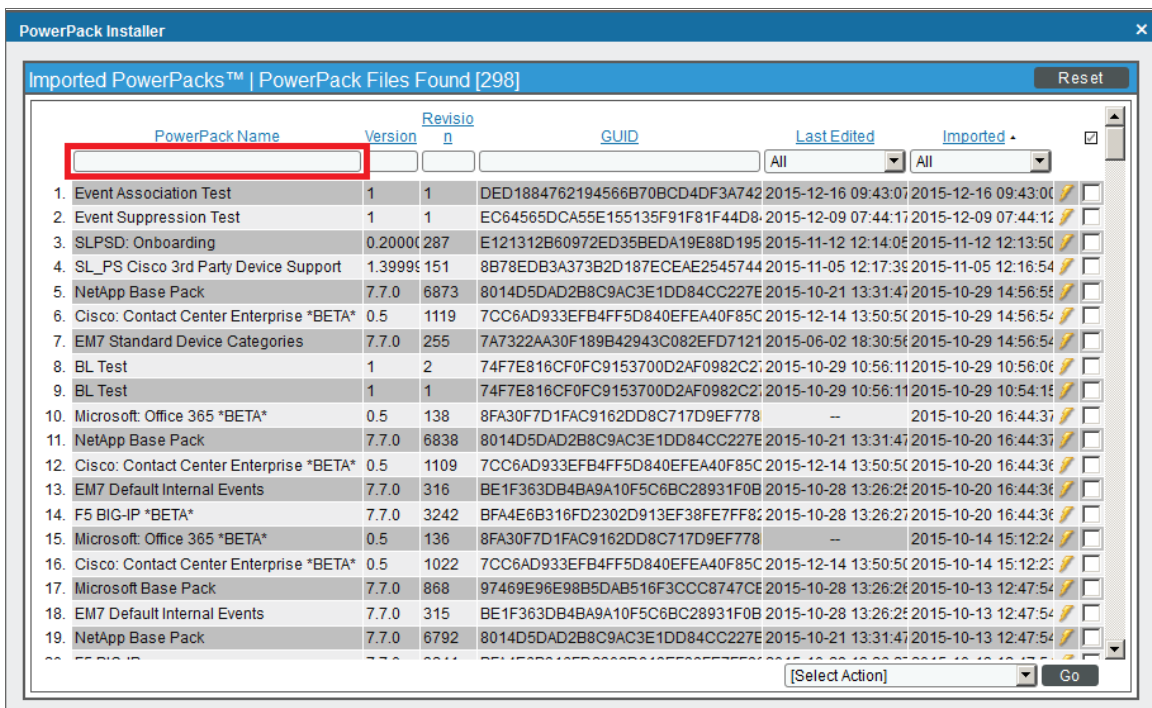
The following sections describe how to install the *VMware: vSphere Dashboards PowerPack* and a description of each dashboard that is included in the *VMware: vSphere Dashboards* and *VMware: vSphere Base Pack PowerPacks*:


<i>Installing the VMware: vSphere Dashboards PowerPack</i> .....	36
<i>VMware Host Performance Dashboard</i> .....	37
<i>VMware vCenter Overview Dashboard</i> .....	39
<i>VMware Device Dashboards</i> .....	41
<i>VMware: Cluster</i> .....	42
<i>VMware: Datastore</i> .....	43
<i>VMware: Datastore Cluster</i> .....	44
<i>VMware: Host</i> .....	45
<i>VMware: Resource Pool</i> .....	46
<i>VMware: Virtual App</i> .....	47
<i>VMware: Virtual Machine</i> .....	48

# Installing the VMware: vSphere Dashboards PowerPack

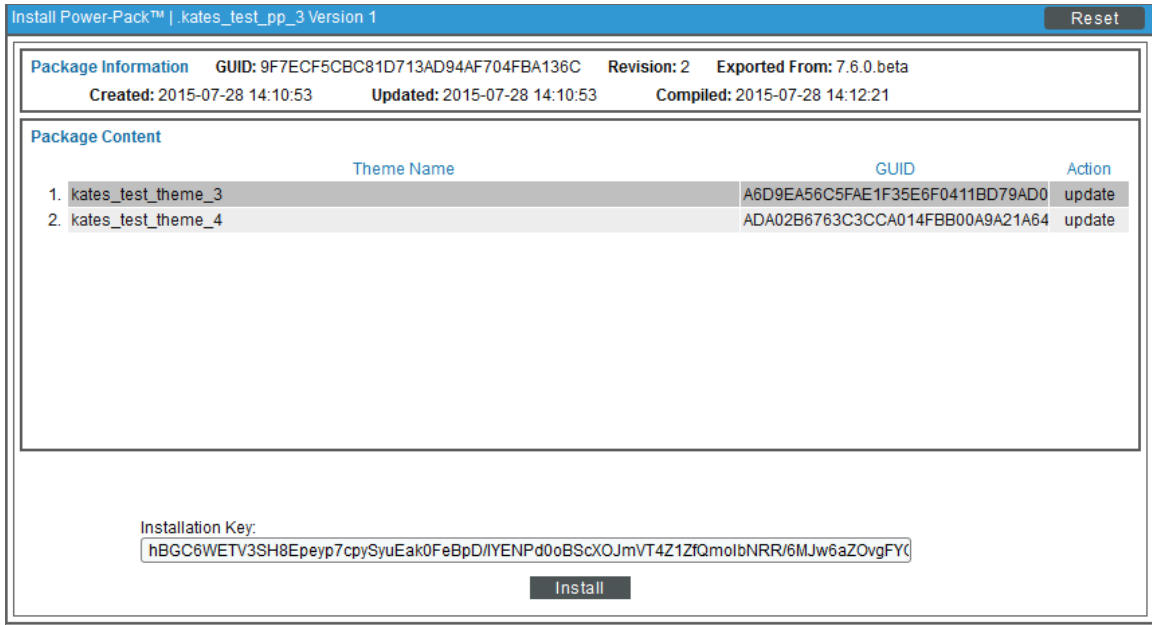
Before you can view the VMware Host Performance or VMware vCenter Overview dashboards in the ScienceLogic platform, you must first install the VMware: vSphere Dashboards PowerPack. To do so:

1. Go to the **PowerPack Manager** page (System > Manage > PowerPacks).
2. Click the **[Actions]** button, then select *Install PowerPack*. The **Imported PowerPacks** modal page appears.
3. Use the search filter in the **PowerPack Name** column heading to locate the PowerPack you want to install. To do so, enter text to match, including special characters, and the **Imported PowerPacks** modal page displays only PowerPacks that have a matching name.



4. Click the lightning-bolt icon (  ) for the PowerPack that you want to install.

- The **Install PowerPack** modal page appears. To install the PowerPack, click **[Install]**.

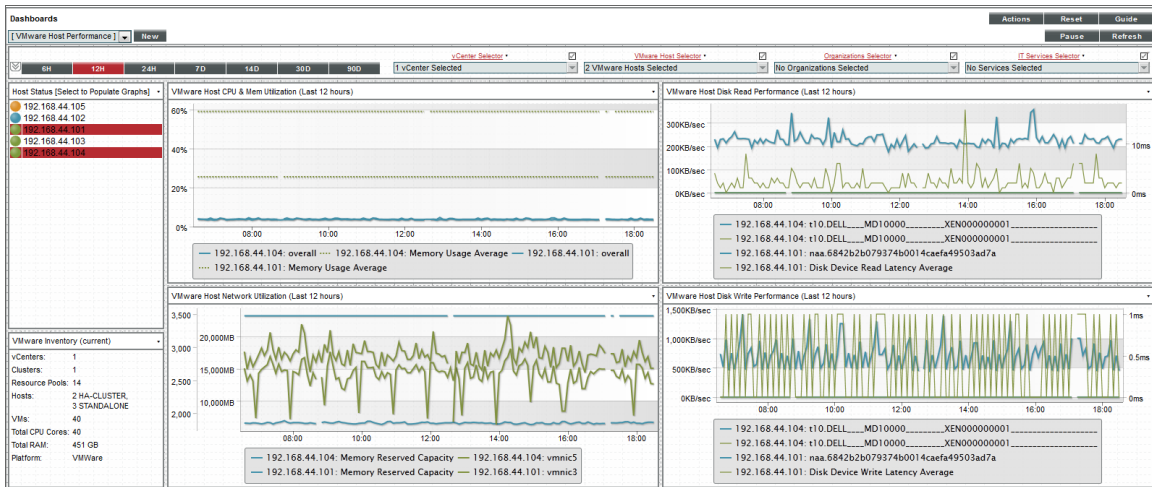


- The PowerPack now appears in the **PowerPack Manager** page. The contents of the PowerPack are automatically installed in your ScienceLogic system.

## VMware Host Performance Dashboard

The VMware Host Performance dashboard allows service providers to monitor VMware hosts and diagnose problems with those hosts. The dashboard can include data from up to four hosts in each graph. This allows users to find correlations between hosts in data drops or spikes, making it easier for users to identify and diagnose issues.

The dashboard displays the following widgets:



**Context Quick Selector.** This widget is located along the top of the dashboard and contains:

- *Time span presets.* Users select the time span over which they want to view data. Selections range from 6 hours to 90 days.
- *vCenter Selector.* If a user has multiple vCenters, this drop-down list allows the user to select one or several vCenters for which they want to view data.
- *Organizations Selector.* This drop-down list allows a user to select specific organizations for which they want to view data.
- *IT Services Selector.* If a user has an ITSM service (for example, for e-commerce), the IT Services Selector drop-down list allows them to select an IT service for which they want to view data.

**Host Status.** Displays the IP address of each VMware ESX/ESXi server and its status with a color-coded "traffic light" icon. When you select one or more VMware ESX/ESXi server, the four performance widgets are populated with data from that host server(s). The status of each host is indicated as follows:

- **Critical.** Host has a serious problem that requires immediate attention.
- **Major.** Host has a problem that requires immediate attention.
- **Minor.** Host has a less-serious problem.
- **Notice.** Host has an informational event associated with it.
- **Healthy.** Host is running with no problems.

**NOTE:** More than four hosts can be selected in the **Host Status** widget, but the dashboard will only display data from the first four that have been selected.

**VMware Inventory.** This widget displays information based on the user's credentials. The widget displays inventory information about the following:

- vCenters
- Clusters
- Resource Pools
- Hosts
- VMs
- Total CPU Cores
- Total RAM
- Platform

The following four widgets measure different aspects of VMware performance. Select one or more hosts in the **Host Status** widget to view data in these widgets:

- **VMware Host CPU & Memory Utilization.** Displays overall and average CPU and Memory Utilization in percent. Displays a line graph with a line each for CPU Utilization and Memory Utilization over the time period selected in the Context Quick Selector by percent.

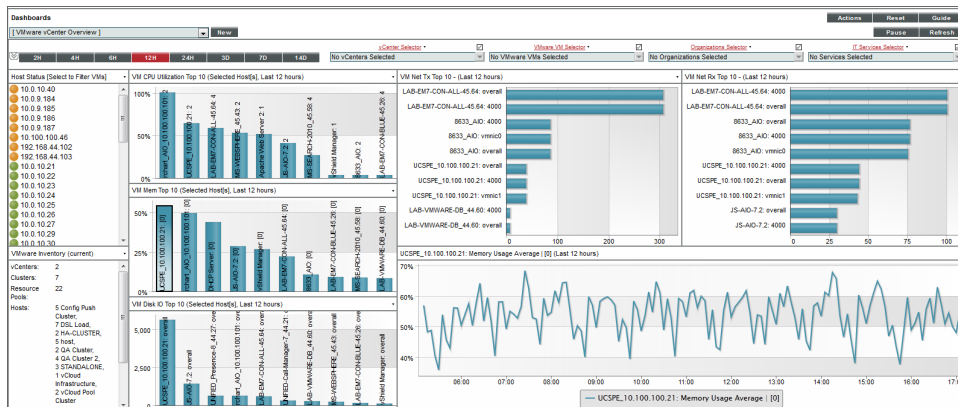
- **VMware Host Disk Read Performance.** Displays the Disk Read Performance of the selected host in a line graph.
- **VMware Host Network Utilization.** Displays the Network Utilization of the selected host in a line graph.
- **VMware Host Disk Write Performance.** Displays the Disk Write Performance of the selected host in a line graph.

Each of the four performance widgets has the following features:

- The X-axis of each widget displays time selected in the Context Quick Selector by hours or days.
- For the selected VMware ESX/ESXi server, the Y-axis displays either performance or utilization by percentage or in a format that is auto-converted to the most consumable value based on the server.
- You can hide a data series by selecting the label in the legend that appears at the bottom of the widget. To show a hidden data series, select the label again.
- You can zoom in on a section of the graph by clicking, holding, and dragging your mouse across the section you want to view. If you are zoomed in on a section of the graph, you can revert to the original time span by selecting *Reset zoom* in the top-right corner of the graph.
- Hovering the cursor over a single line reveals details about specific data points. If you select a data point, the **Device Performance** page will open in a separate window with the graph for the selected metric displayed.

## VMware vCenter Overview Dashboard

The VMware vCenter Overview dashboard allows users to have visibility into their VMware environment. Users can view how their VMs and hosts are performing over a given period of time. The dashboard allows diagnostics with its overlay capability. By selecting up to four hosts, the usage average of those devices and hosts can reveal correlations in spikes or drops in data, allowing the user to quickly diagnose issues.



**Context Quick Selector.** This widget contains the time span presets buttons, vCenter Selector, VMware VM Selector, Organizations Selector, and IT Services Selector.

- **Time span presets.** Users select the time span over which they want to view data. Selections range from 6 hours to 90 days.

- *vCenter Selector*. If a user has multiple vCenters, this drop-down list allows the user to select one or several vCenters for which they want to view data
- *VMware Host Selector*. This drop-down list allows a user to select up to four VMware Hosts for which they want to view data.
- *Organizations Selector*. This drop-down list allows a user to select specific organizations for which they want to view data
- *IT Services Selector*. If a user has an ITSM service for e-commerce, for example, the IT Services Selector drop-down list allows them to select an IT service for which they want to view data.

**Host Status.** Displays the IP address of each VMware server and its status with a color-coded "traffic light" icon. When one or more are selected, the graphs will be populated with data from that host server(s). The status of each host is indicated as follows:

- **Critical.** Host has a serious problem that requires immediate attention.
- **Major.** Host has a problem that requires immediate attention.
- **Minor.** Host has a less-serious problem.
- **Notice.** Host has an informational event associated with it.
- **Healthy.** Host is running with no problems.

**NOTE:** More than four hosts can be selected in the **Host Status** widget, but the dashboard will only display data from the first four that have been selected. It is recommended that you select VMware devices from the **VMware VM Selector** drop-down list in the **Quick Context Selector** widget.

**VMware Inventory.** This widget displays information based on the user's credentials. The widget displays inventory information about the following:

- vCenters
- Clusters
- Resource Pools
- Hosts
- VMs
- Total CPU Cores
- Total RAM
- Platform

**VM CPU Utilization.** Displays the 10 guest VMs with the highest average CPU utilization over the selected time period. The widget displays a bar graph with percentage utilized as the Y-axis.

**VM Memory Top 10.** Displays the 10 guest VMs with the highest average memory utilization over the selected time period. The widget displays a bar graph with percentage utilized as the Y-axis.



**VM Disk IO Top 10.** Displays the 10 guest VMs with the highest average disk usage over the selected time period. The widget displays a bar graph with disk utilization as the Y-axis.

**VM Network Transmit Top 10.** Displays the 10 guest VMs with the highest average outbound network utilization over the selected time period. The widget displays a bar graph with outbound network utilization as the Y-axis.

**VM Network Receive Top 10.** Displays the 10 guest VMs with the highest average inbound network utilization over the selected time period. The widget displays a bar graph with inbound network utilization as the Y-axis.

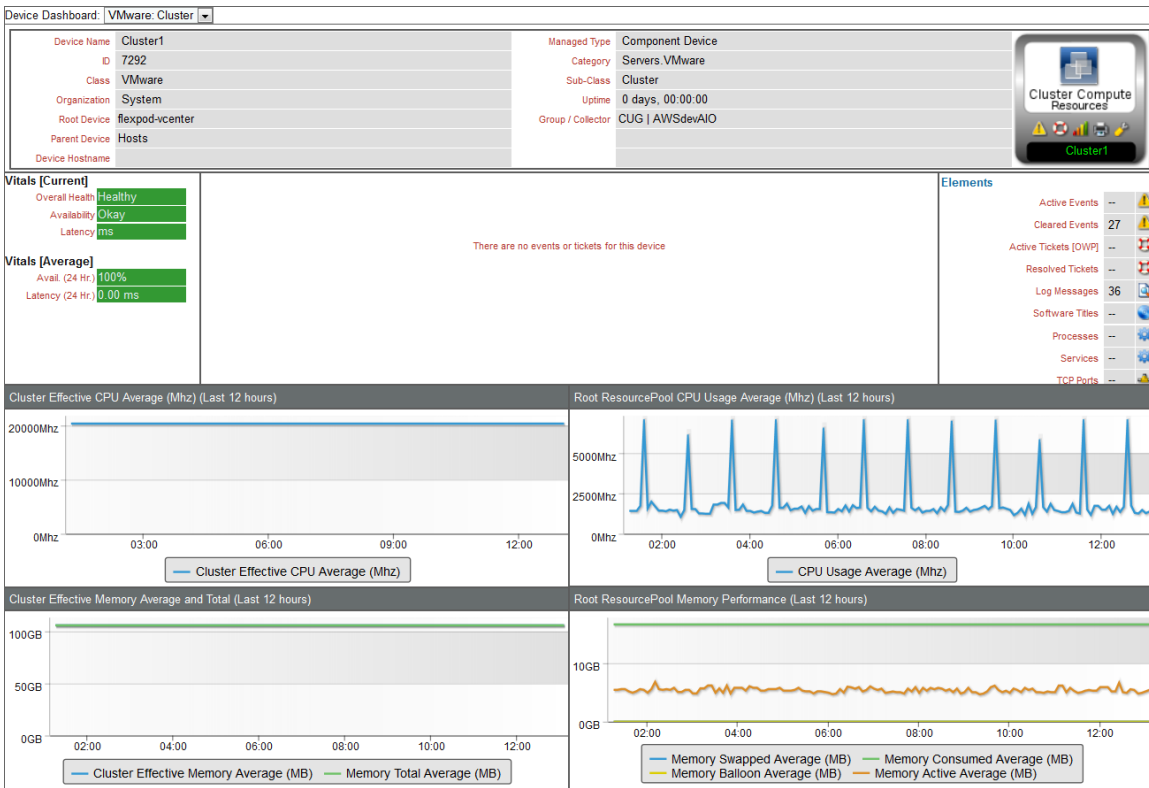
**Detailed Performance Graph.** The widget in the bottom-right of the dashboard displays data when a bar on any of the other graphs in this dashboard is selected. When a bar is selected, it displays the selected metric over time. You can select up to eight metrics to display in this graph by holding down the **<Ctrl>** key when you select each bar.

---

## VMware Device Dashboards

The *VMware: vSphere Base Pack PowerPack* includes device dashboards that provide summary information for VMware component devices. Each of these device dashboards is aligned as the default device dashboard for its equivalent device class.

# VMware: Cluster



The VMware: Cluster device dashboard displays the following information:

- The basic information about the cluster
- The current health, availability, and latency for the cluster
- A list of active events and open tickets associated with the cluster
- A count of, and links to, the elements associated with the cluster
- Four instances of the Multi-series Performance Widget that display the following metrics trended over the last 12 hours:
  - Cluster Effective CPU Average
  - CPU Usage Average
  - Cluster Effective Memory Average
  - Memory Total Average
  - Memory Swapped Average
  - Memory Consumed Average

- Memory Balloon Average
- Memory Active Average

## VMware: Datastore



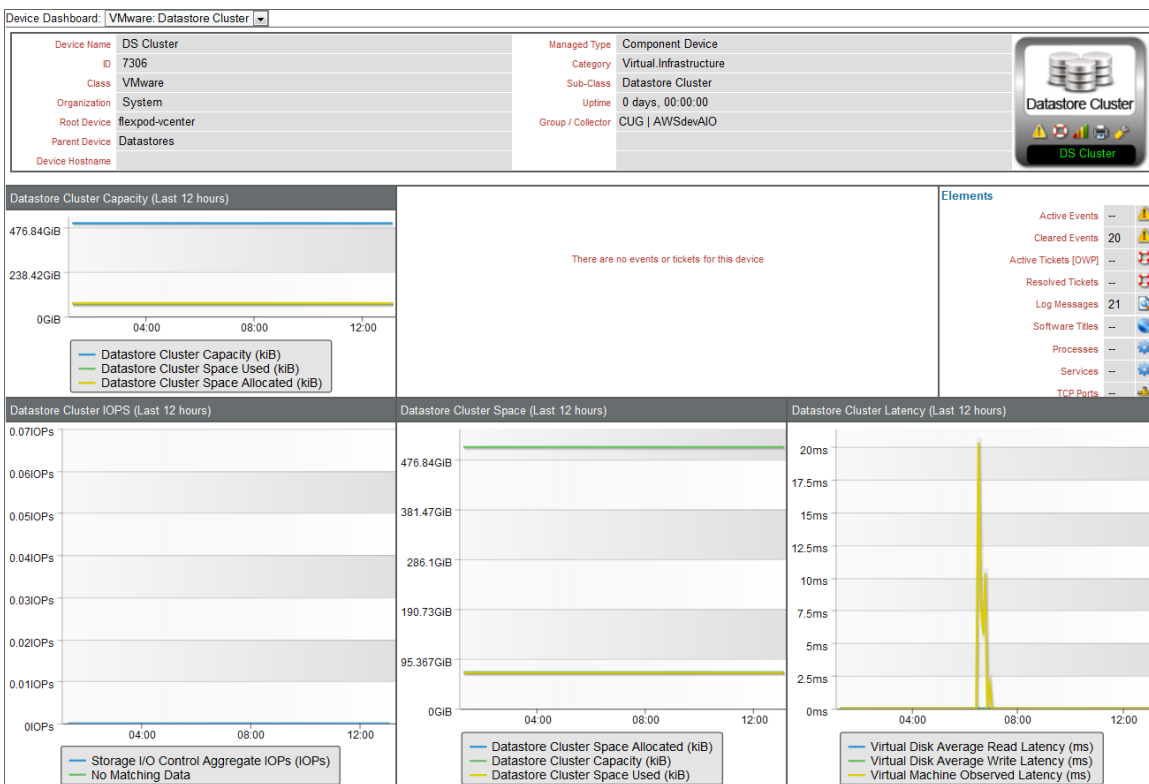
4

The VMware: Datastore device dashboard displays the following information:

- The basic information about the datastore
- The current health, availability, and latency for the datastore
- A list of active events and open tickets associated with the datastore
- A count of, and links to, the elements associated with the datastore
- Six instances of the Multi-series Performance Widget that display the following metrics trended over the last 12 hours:
  - Datastore Throughput Usage
  - Datastore Throughput Contention
  - Datastore Capacity
  - Datastore Free Space
  - Datastore Space Used
  - Datastore Uncommitted Space

- Datastore Utilization
- Datastore Host Total IOPS
- Datastore Host Read IOPS
- Datastore Host Write IOPS
- Datastore VM Total IOPS
- Datastore VM Read IOPS
- Datastore VM Write IOPS
- Storage I/O Control Aggregate IOPS
- Virtual Disk Average Read IOPS
- Virtual Disk Average Write IOPS

## VMware: Datastore Cluster

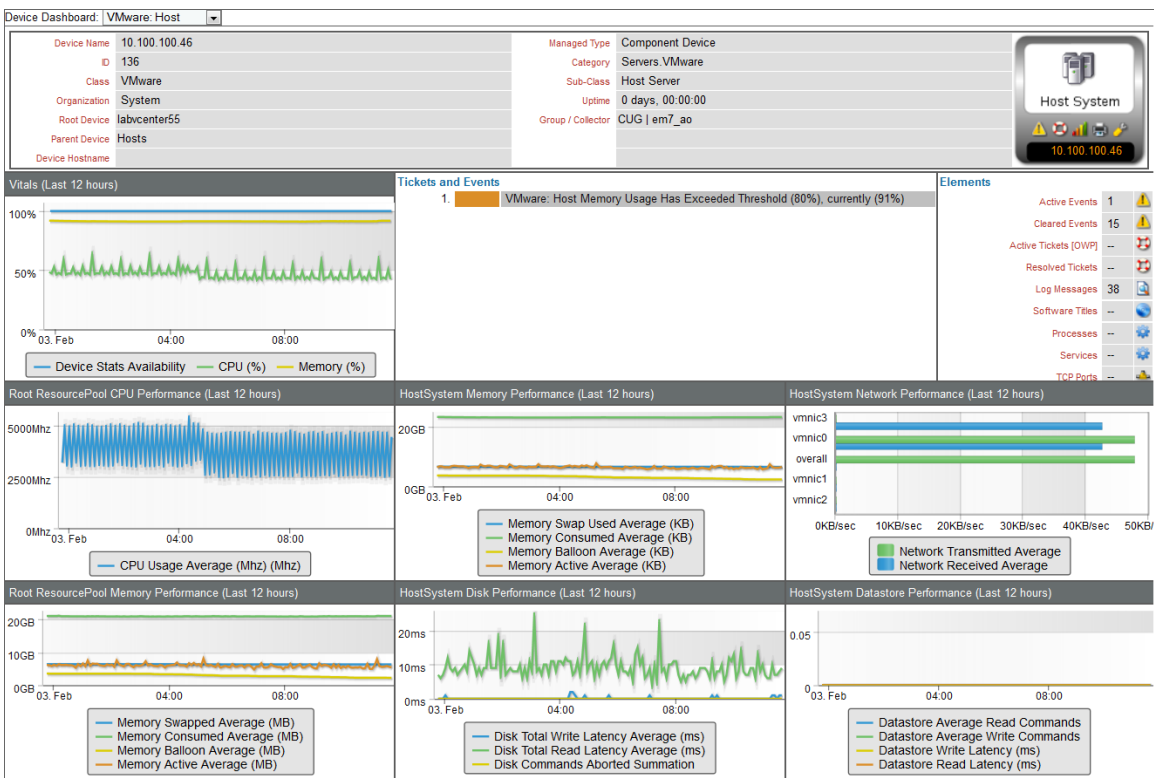


The VMware: Datastore Cluster device dashboard displays the following information:

- The basic information about the datastore cluster
- A list of active events and open tickets associated with the datastore cluster
- A count of, and links to, the elements associated with the datastore cluster

- Four instances of the Multi-series Performance Widget that display the following metrics trended over the last 12 hours:
  - Datastore Cluster Capacity
  - Datastore Cluster Space Used
  - Datastore Cluster Space Allocated
  - Storage I/O Control Aggregate IOPS
  - Virtual Disk Average Read Latency
  - Virtual Disk Average Write Latency
  - Virtual Machine Observed Latency

## VMware: Host

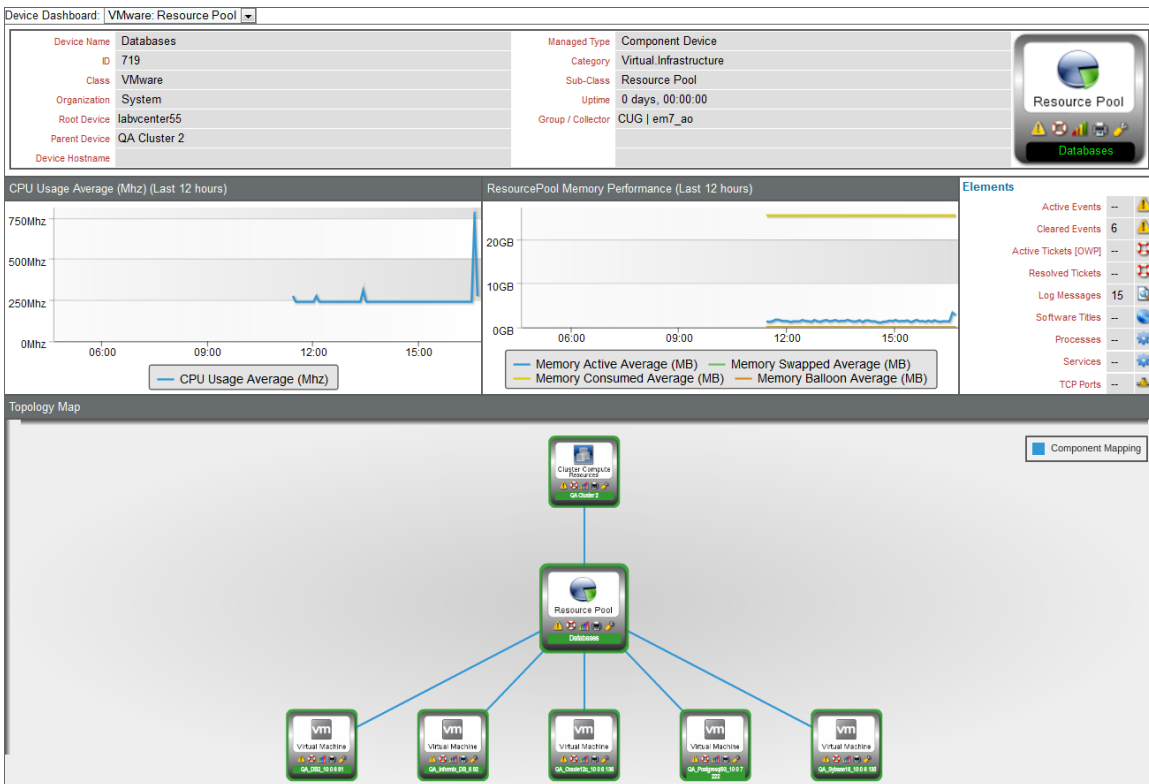


The VMware: Host device dashboard displays the following information:

- The basic information about the host
- A list of active events and open tickets associated with the host
- A count of, and links to, the elements associated with the host
- Seven instances of the Multi-series Performance Widget that display the following metrics trended over the last 12 hours:
  - Availability

- CPU (%)
- Memory (%)
- CPU Usage Average
- Memory Swap Used Average
- Memory Consumed Average
- Memory Balloon Average
- Memory Active Average
- Network Transmitted Average
- Network Received Average
- Disk Total Write Latency Average
- Disk Total Read Latency Average
- Disk Commands Aborted Summation
- Datastore Average Read Commands
- Datastore Average Write Commands
- Datastore Write Latency
- Datastore Read Latency

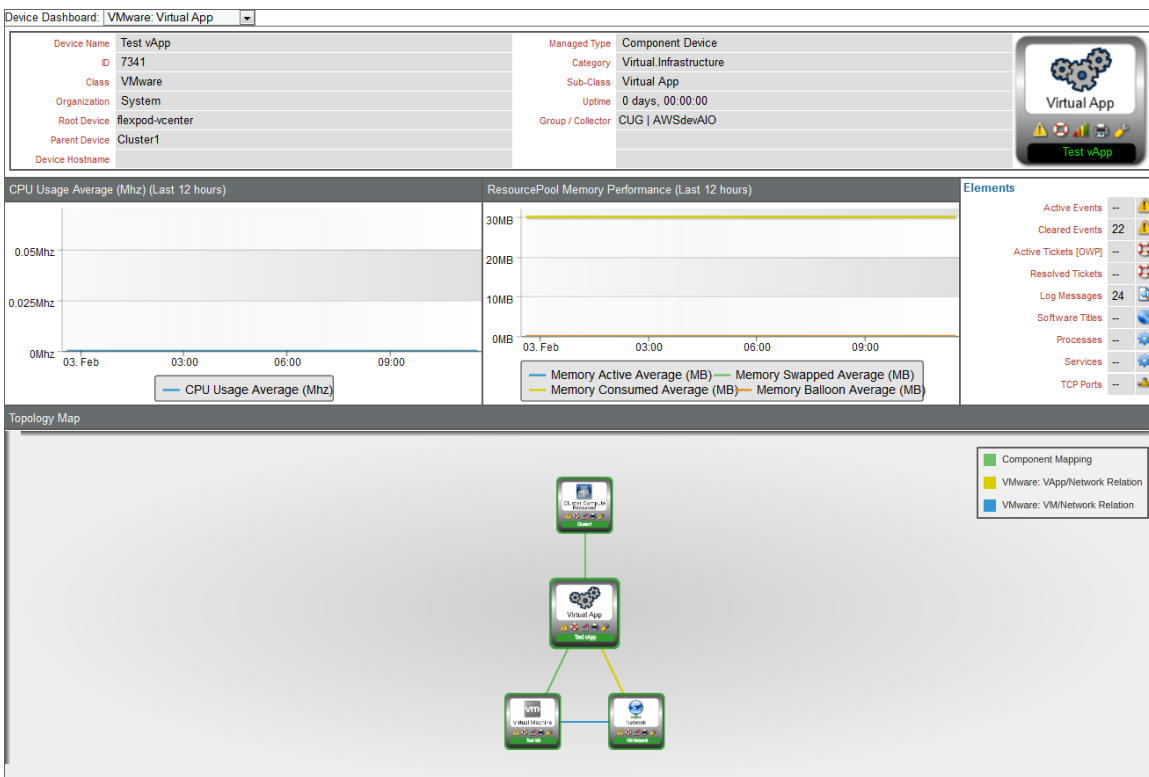
## VMware: Resource Pool



The VMware: Resource Pool device dashboard displays the following information:

- The basic information about the resource pool
- A count of, and links to, the elements associated with the resource pool
- Two instances of the Multi-series Performance Widget that display the following metrics trended over the last 12 hours:
  - CPU Usage Average
  - Memory Active Average
  - Memory Swap Used Average
  - Memory Consumed Average
  - Memory Balloon Average
- A topology map that shows the devices that are directly related to the resource pool

## VMware: Virtual App

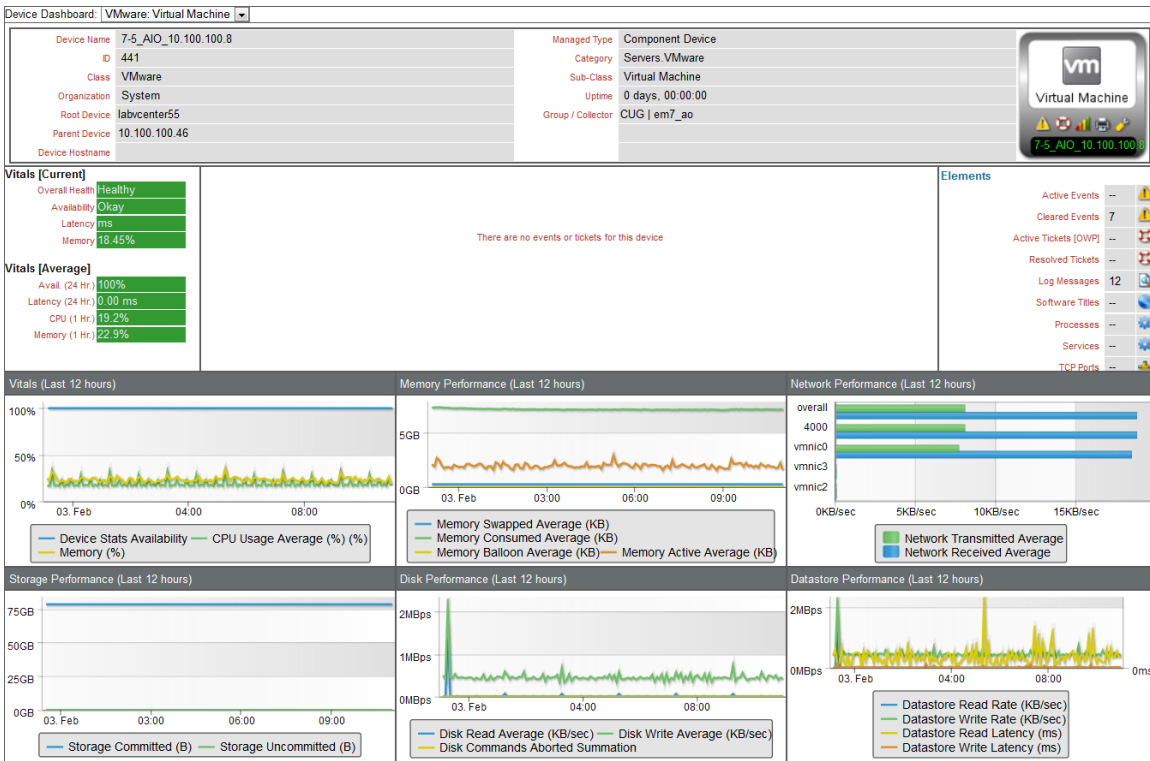


The VMware: Virtual App device dashboard displays the following information:

- The basic information about the virtual app
- A count of, and links to, the elements associated with the virtual app

- Two instances of the Multi-series Performance Widget that display the following metrics trended over the last 12 hours:
  - CPU Usage Average
  - Memory Active Average
  - Memory Swap Used Average
  - Memory Consumed Average
  - Memory Balloon Average
- A topology map that shows the devices that are directly related to the virtual app

## VMware: Virtual Machine



The VMware: Virtual Machine device dashboard displays the following information:

- The basic information about the virtual machine
- The current health, availability, latency, CPU, and memory for the virtual machine
- A list of active events and open tickets associated with the virtual machine
- A count of, and links to, the elements associated with the virtual machine
- Six instances of the Multi-series Performance Widget that display the following metrics trended over the last 12 hours:
  - Availability



- CPU (%)
- Memory (%)
- Memory Swapped Average
- Memory Consumed Average
- Memory Balloon Average
- Memory Active Average
- Network Transmitted Average
- Network Received Average
- Storage Committed
- Storage Uncommitted
- Disk Read Average
- Disk Write Average
- Disk Commands Aborted Summation
- Datastore Read Rate
- Datastore Write Rate
- Datastore Read Latency
- Datastore Write Latency

© 2003 - 2018, ScienceLogic, Inc.

All rights reserved.

#### LIMITATION OF LIABILITY AND GENERAL DISCLAIMER

ALL INFORMATION AVAILABLE IN THIS GUIDE IS PROVIDED "AS IS," WITHOUT WARRANTY OF ANY KIND, EITHER EXPRESS OR IMPLIED. SCIENCELOGIC™ AND ITS SUPPLIERS DISCLAIM ALL WARRANTIES, EXPRESS OR IMPLIED, INCLUDING, BUT NOT LIMITED TO, THE IMPLIED WARRANTIES OF MERCHANTABILITY, FITNESS FOR A PARTICULAR PURPOSE OR NON-INFRINGEMENT.

Although ScienceLogic™ has attempted to provide accurate information on this Site, information on this Site may contain inadvertent technical inaccuracies or typographical errors, and ScienceLogic™ assumes no responsibility for the accuracy of the information. Information may be changed or updated without notice. ScienceLogic™ may also make improvements and / or changes in the products or services described in this Site at any time without notice.

#### Copyrights and Trademarks

ScienceLogic, the ScienceLogic logo, and EM7 are trademarks of ScienceLogic, Inc. in the United States, other countries, or both.

Below is a list of trademarks and service marks that should be credited to ScienceLogic, Inc. The ® and ™ symbols reflect the trademark registration status in the U.S. Patent and Trademark Office and may not be appropriate for materials to be distributed outside the United States.

- ScienceLogic™
- EM7™ and em7™
- Simplify IT™
- Dynamic Application™
- Relational Infrastructure Management™

The absence of a product or service name, slogan or logo from this list does not constitute a waiver of ScienceLogic's trademark or other intellectual property rights concerning that name, slogan, or logo.

Please note that laws concerning use of trademarks or product names vary by country. Always consult a local attorney for additional guidance.

#### Other

If any provision of this agreement shall be unlawful, void, or for any reason unenforceable, then that provision shall be deemed severable from this agreement and shall not affect the validity and enforceability of any remaining provisions. This is the entire agreement between the parties relating to the matters contained herein.

In the U.S. and other jurisdictions, trademark owners have a duty to police the use of their marks. Therefore, if you become aware of any improper use of ScienceLogic Trademarks, including infringement or counterfeiting by third parties, report them to Science Logic's legal department immediately. Report as much detail as possible about the misuse, including the name of the party, contact information, and copies or photographs of the potential misuse to: [legal@sciencelogic.com](mailto:legal@sciencelogic.com)



800-SCI-LOGIC (1-800-724-5644)

International: +1-703-354-1010