



SL1 Microsoft Azure: SL1 Dashboards PowerPack Release Notes

Version 102

Overview

Version 102 of the *Microsoft Azure: SL1 Dashboards PowerPack* includes autoselect for context-driving widgets and the addition of forecast widgets to some dashboards.

NOTE: These dashboards are intended for use only in the new SL1 user interface and will not load in the classic ScienceLogic platform user interface.

- **Minimum Required Platform Version:** 8.12.1
- **Minimum Required AP2 Version:** 5.125.44
- **Minimum Required Widget Components Version:** 2.175.0
- **Minimum Required Microsoft: Azure PowerPack Version:** 110

This document includes the following topics:

<i>Before You Install or Upgrade</i>	2
<i>Installation or Upgrade Process</i>	3
<i>Features</i>	3
<i>Enhancements and Issues Addressed</i>	17
<i>Known Issues</i>	17

Before You Install or Upgrade

Before installing *Microsoft Azure: SL1 Dashboards PowerPack* version 102, you must first ensure that you are running version 8.12.1 or later of SL1, AP2 version 5.125.44 or later, and Widget Components version 2.175.0 or later.

NOTE: For details on upgrading SL1, see the appropriate [Release Notes](#).

You must also import and install the *Microsoft: AzurePowerPack* version 110 or later before installing the PowerPack.

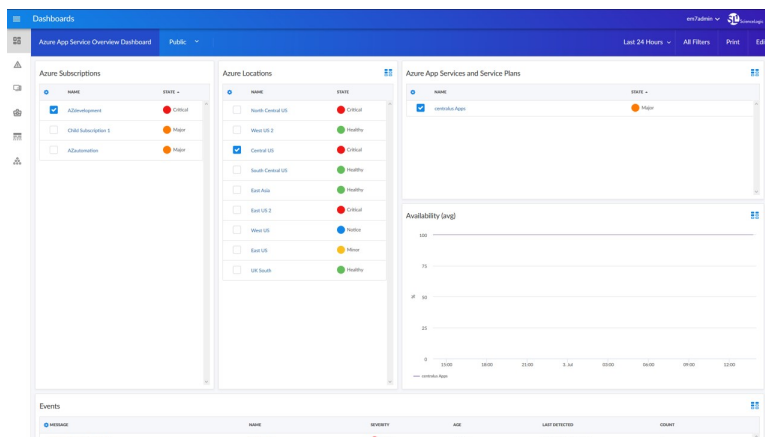
Installation or Upgrade Process

To install or upgrade the *Microsoft Azure: SL1 Dashboards* PowerPack, perform the following steps:

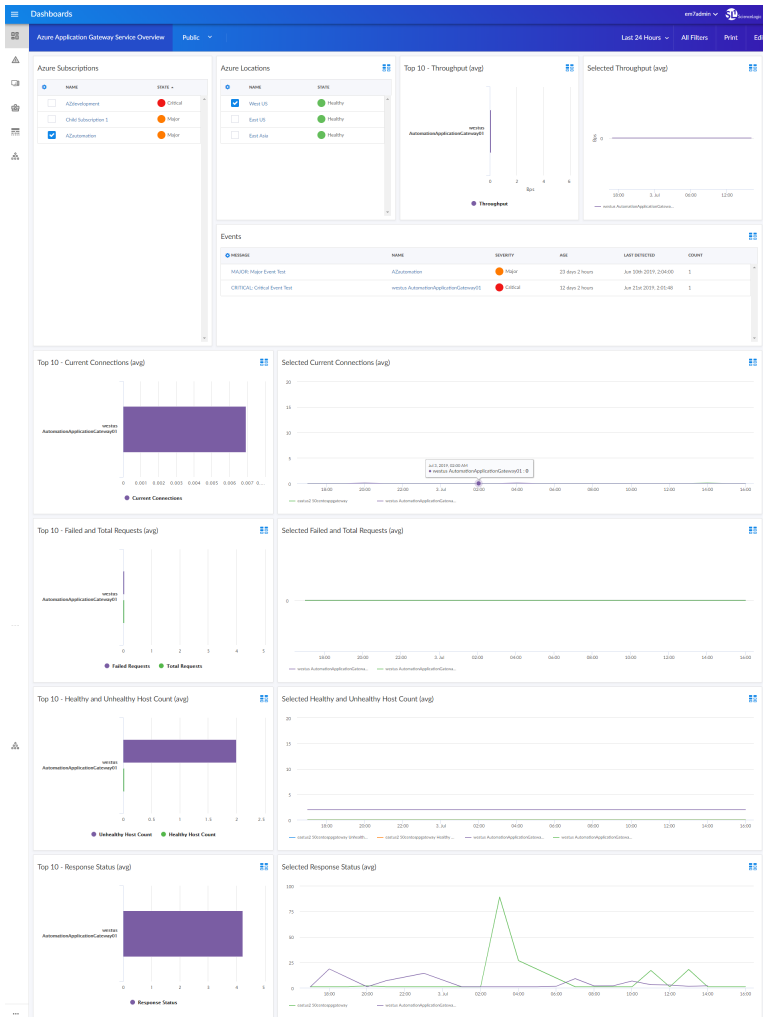
1. Familiarize yourself with the [Known Issues](#) for this release.
2. See the [Before You Install or Upgrade](#) section. If you have not done so already, upgrade your system to the 8.12.1 or later release.
3. Download *Microsoft Azure: SL1 Dashboards* version 102 from the Support Site to a local computer.
4. Go to the **PowerPack Manager** page (System > Manage > PowerPacks). Click the **[Actions]** menu and choose *Import PowerPack*. When prompted, import *Microsoft Azure: SL1 Dashboards* version 102.
5. Click the **[Install]** button. For details on installing PowerPacks, see the chapter on *Installing a PowerPack* in the **PowerPacks** manual.

Features

The following dashboards are included in version 102 of the *Microsoft Azure: SL1 Dashboards* PowerPack:

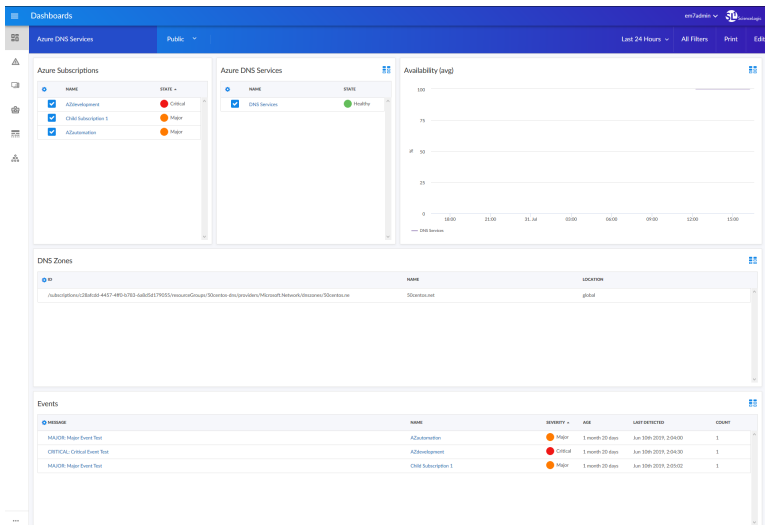


- An "Azure App Service Overview" dashboard, which includes the following widgets that display overview data about your Microsoft Azure applications:
 - Azure Subscriptions
 - Azure Locations
 - Azure App Services and Service Plans
 - Availability (avg)
 - Events

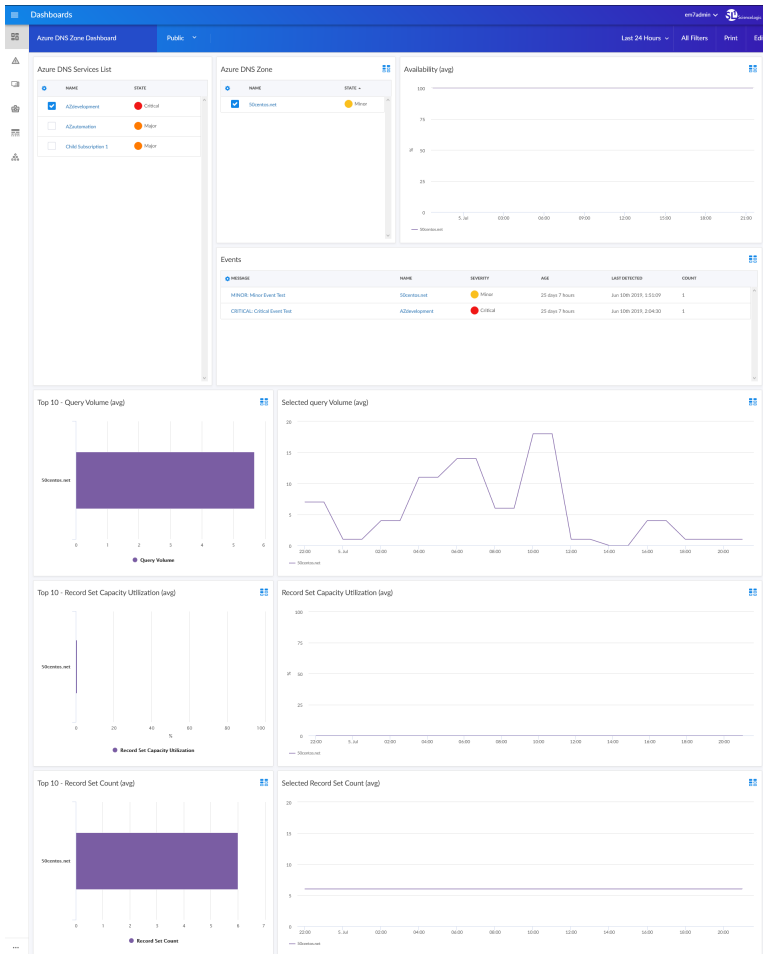


- An "Azure Application Gateway Service Overview" dashboard, which includes the following widgets that display overview data about your Microsoft Azure applications:
 - Azure Subscriptions
 - Azure Locations
 - Top 10 - Throughput (avg)
 - Selected Throughput (avg)
 - Events
 - Top 10 - Current Connections (avg)
 - Selected Current Connections (avg)
 - Top 10 - Failed and Total Requests (avg)
 - Selected Failed and Total Requests (avg)
 - Top 10 - Healthy and Unhealthy Host Count (avg)
 - Selected Healthy and Unhealthy Host Count (avg)

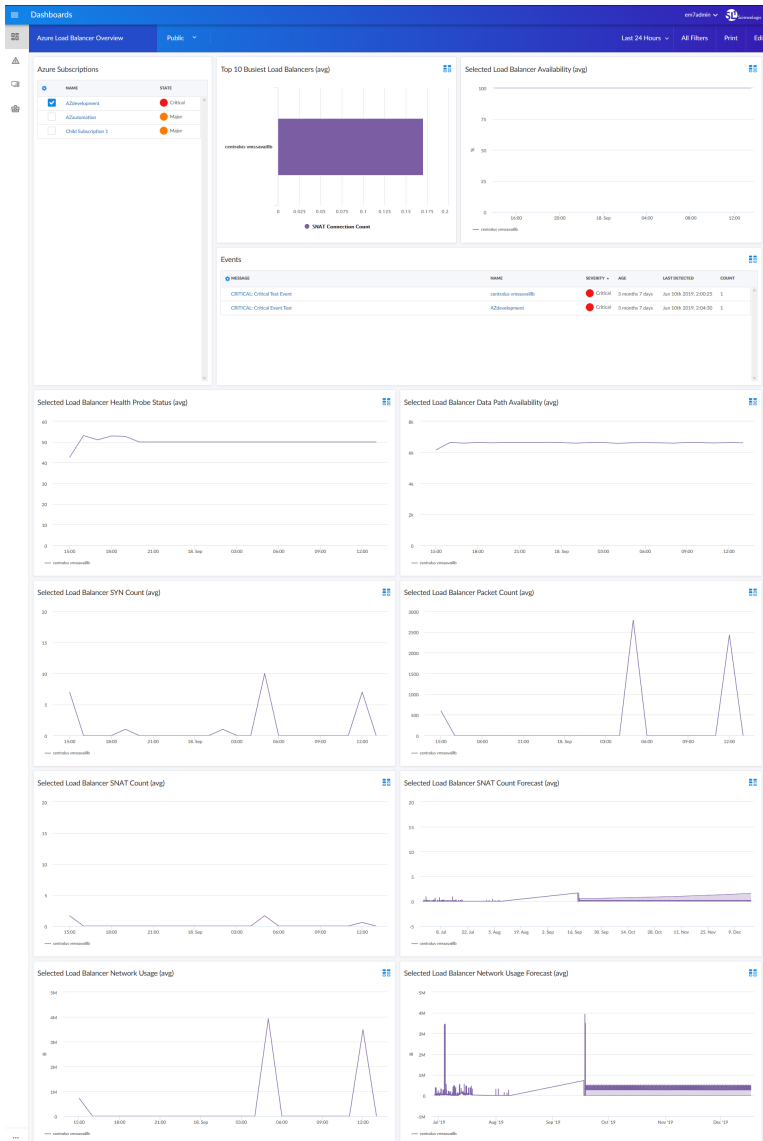
- Top 10 - Response Status (avg)
- Selected Response Status (avg)



- An "Azure DNS Services" dashboard, which includes the following widgets that display data about your Microsoft Azure services:
 - Azure Subscriptions
 - Azure DNS Services
 - Availability (avg)
 - DNS Zones
 - Events

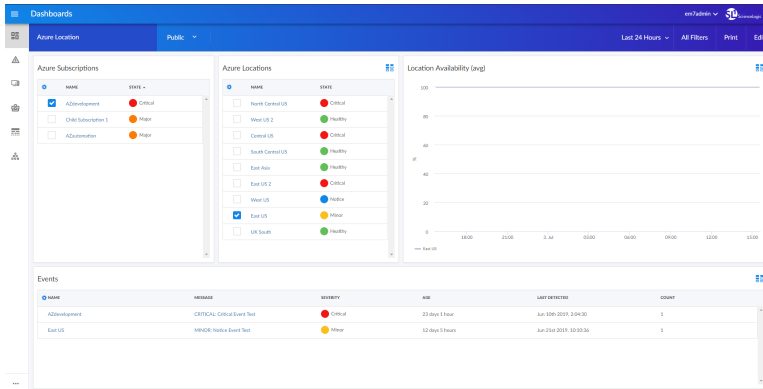


- An "Azure DNS Zone" dashboard, which includes the following widgets that display data about your Microsoft Azure zones:
 - Azure DNS Services List
 - Azure DNS Zone
 - Availability (avg)
 - Events
 - Top 10 - Query Volume (avg)
 - Selected Query Volume (avg)
 - Top 10 - Record Set Capacity Utilization (avg)
 - Record Set Capacity Utilization (avg)
 - Top 10 - Record Set Count (avg)
 - Selected Record Set Count (avg)

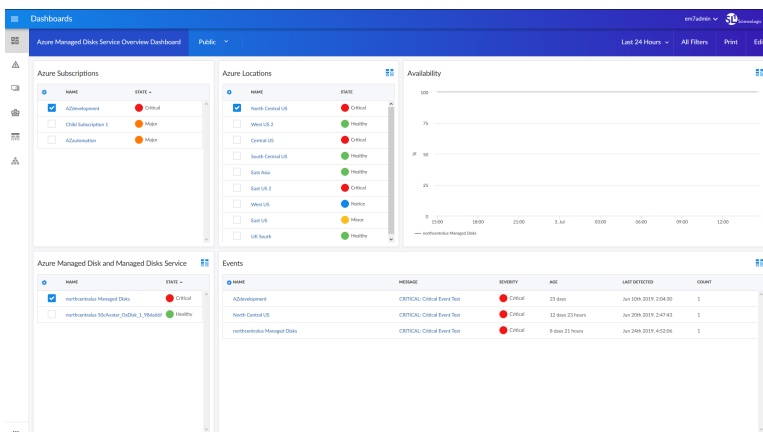


- An "Azure Load Balancer Overview" dashboard, which includes the following widgets that display overview data about your Microsoft Azure load balancers:
 - Azure Subscriptions
 - Top 10 Busiest Load Balancers (avg)
 - Selected Load Balancer Availability (avg)
 - Events
 - Selected Load Balancer Health Probe Status (avg)
 - Selected Load Balancer Data Path Availability (avg)
 - Selected Load Balancer SYN Count (avg)
 - Selected Load Balancer Packet Count (avg)

- Selected Load Balancer SNAT Count (avg)
- Selected Load Balancer SNAT Count Forecast (avg)
- Selected Load Balancer Network Usage (avg)
- Selected Load Balancer Network Forecast (avg)

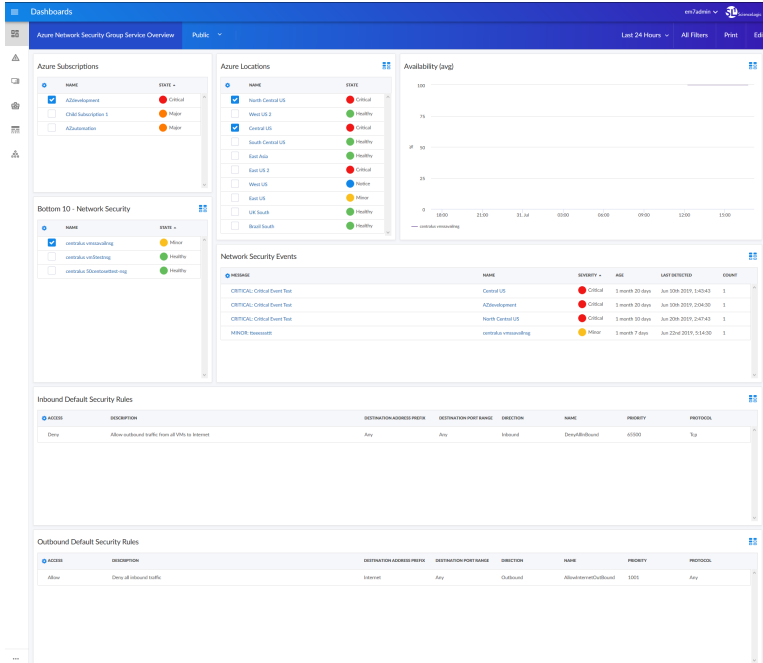


- An "Azure Location" dashboard, which includes the following widgets that display data about your Microsoft Azure locations:
 - Azure Subscriptions
 - Azure Locations
 - Location Availability (avg)
 - Events

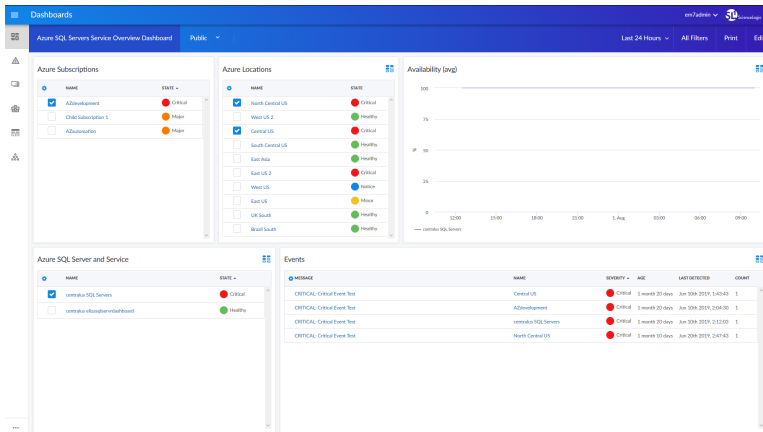


- An "Azure Managed Disks Service Overview" dashboard, which includes the following widgets that display overview data about your Microsoft Azure disks:
 - Azure Subscriptions
 - Azure Locations

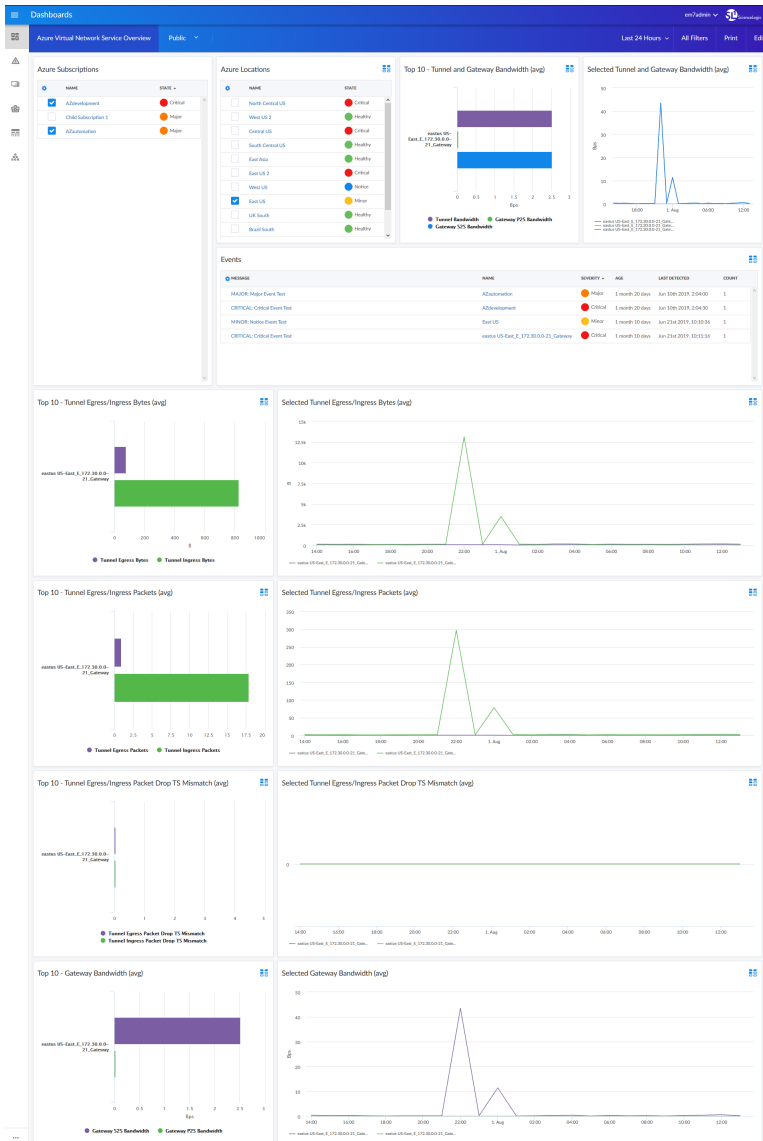
- Availability
- Azure Managed Disk and Managed Disks Service
- Events



- An "Azure Network Security Group Service Overview" dashboard, which includes the following widgets that display overview data about your Microsoft Azure network security:
 - Azure Subscriptions
 - Azure Locations
 - Availability (avg)
 - Bottom 10 - Network Security
 - Network Security Events
 - Inbound Default Security Rules
 - Outbound Default Security Rules

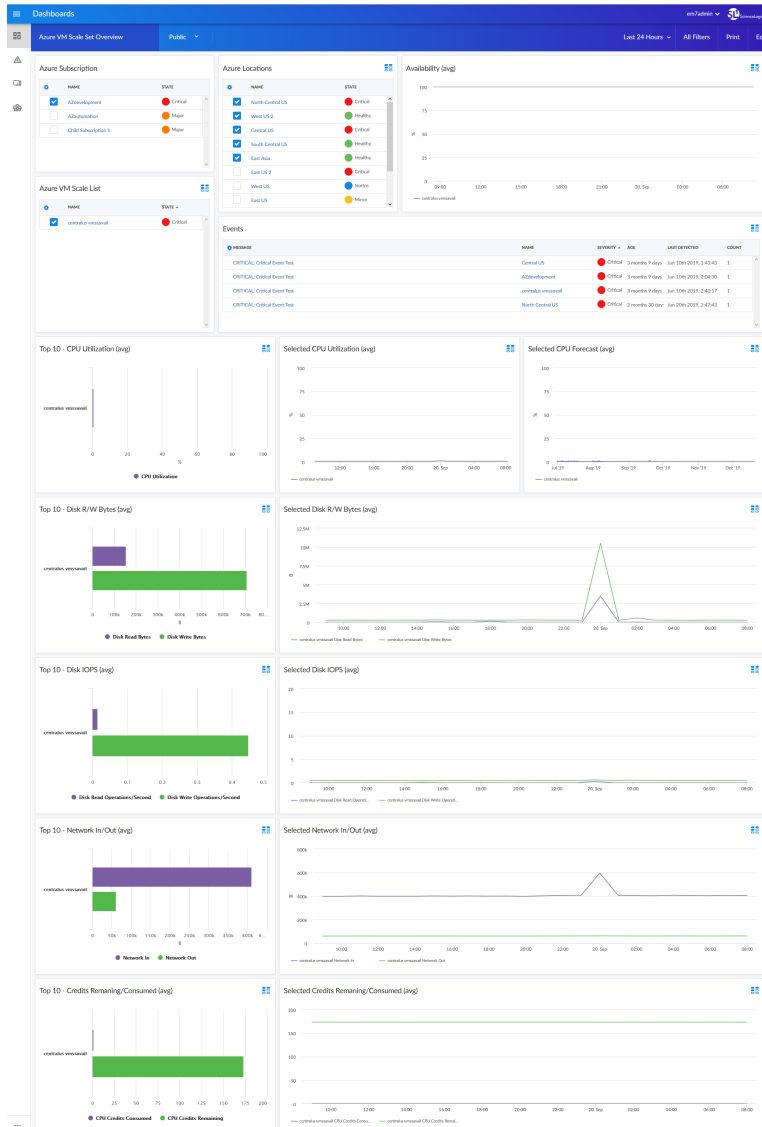


- An "Azure SQL Servers Service Overview" dashboard, which includes the following widgets that display overview data about your Microsoft Azure servers:
 - Azure Subscriptions
 - Azure Locations
 - Availability (avg)
 - Azure SQL Server and Service
 - Events



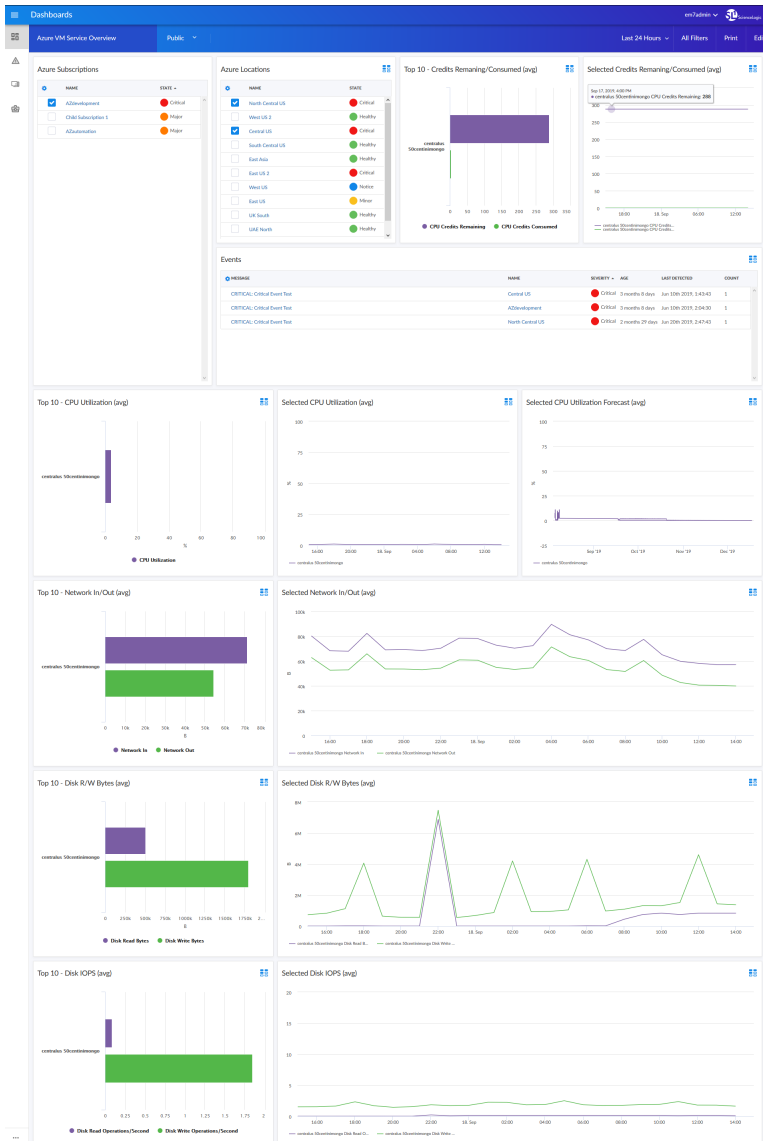
- An "Azure Virtual Network Service Overview" dashboard, which includes the following widgets that display overview data about your Microsoft Azure network service:
 - Azure Subscriptions
 - Azure Locations
 - Events
 - Top 10 - Tunnel and Gateway Bandwidth (avg)
 - Selected Tunnel and Gateway Bandwidth (avg)
 - Top 10 - Tunnel Egress/Ingress Bytes (avg)
 - Selected Tunnel Egress/Ingress Bytes (avg)
 - Top 10 - Tunnel Egress/Ingress Packets (avg)

- Selected Tunnel Egress/Ingress Packets (avg)
- Top 10 - Tunnel Egress/Ingress Packet Drop TS Mismatch (avg)
- Selected Tunnel egress/Ingress Packet Drop TS Mismatch (avg)
- Top 10 - Gateway Bandwidth (avg)
- Selected Gateway Bandwidth (avg)



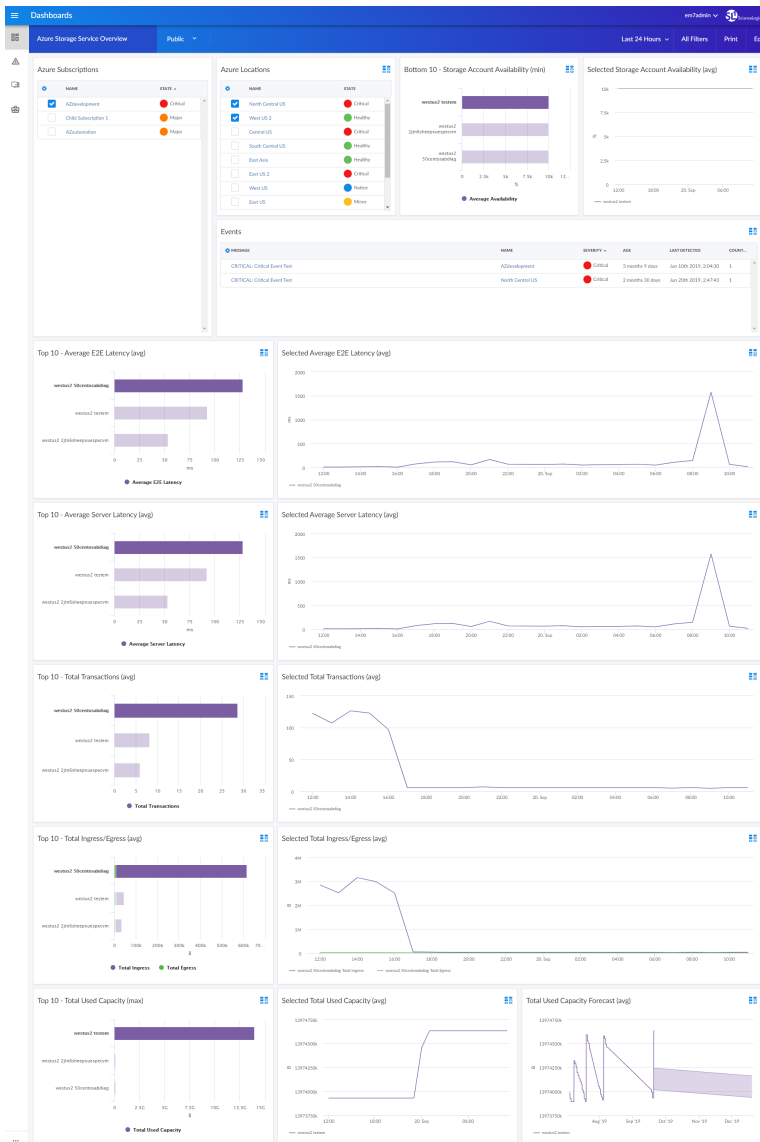
- An "Azure VM Scale Set Overview" dashboard, which includes the following widgets that display overview data about your Microsoft Azure scales:
 - Azure Subscriptions
 - Azure Locations

- Availability (avg)
- Azure VM Scale List
- Events
- Top 10 - CPU Utilization (avg)
- Selected CPU Utilization (avg)
- Selected CPU Utilization Forecast (avg)
- Top 10 - Disk R/W Bytes (avg)
- Selected Disk R/W Bytes (avg)
- Top 10 - Disk IOPS (avg)
- Selected Disk IOPS (avg)
- Top 10 - Network In/Out (avg)
- Selected Network In/Out (avg)
- Top 10 - Credits Remaining/Consumed (avg)
- Selected Credits Remaining/Consumed (avg)



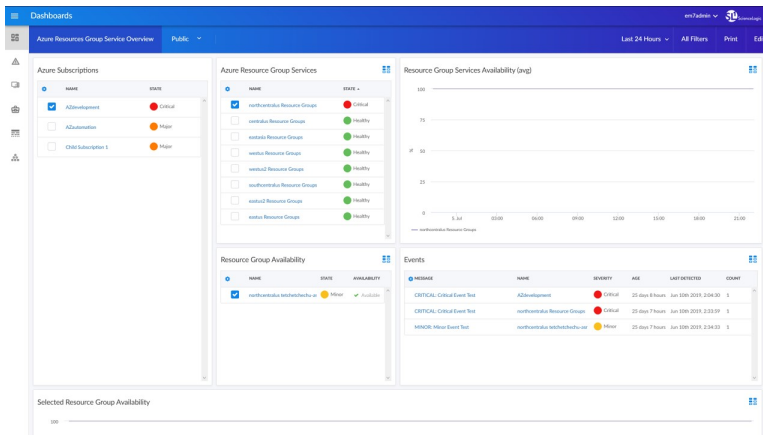
- An "Azure VM Service Overview" dashboard, which includes the following widgets that display overview data about your Microsoft Azure services:
 - Azure Subscriptions
 - Azure Locations
 - Top 10 - Credits Remaining/Consumed (avg)
 - Selected Credits Remaining/Consumed (avg)
 - Events
 - Top 10 - CPU Utilization (avg)
 - Selected CPU Utilization (avg)
 - Selected CPU Utilization Forecast (avg)

- Top 10 - Network In/Out (avg)
- Selected Network In/Out (avg)
- Top 10 - Disk R/W Bytes (avg)
- Selected Disk R/W Bytes (avg)
- Top 10 - Disk IOPS (avg)
- Selected Disk IOPS (avg)



- An "Azure Storage Service Overview" dashboard, which includes the following widgets that display overview data about your Microsoft Azure services:

- Azure Subscriptions
- Azure Locations
- Bottom 10 - Storage Account Availability (min)
- Selected Storage Account Availability (avg)
- Events
- Top 10 - Average E2E Latency (avg)
- Selected Average E2E Latency (avg)
- Top 10 - Average Server Latency (avg)
- Selected Average Server Latency (avg)
- Top 10 - Total Transactions (avg)
- Selected Total Transactions (avg)
- Top 10 - Total Ingress/Egress (avg)
- Selected Total Ingress/Egress (avg)
- Top 10 - Total Used Capacity (max)
- Selected Total Used Capacity (avg)
- Total Used Capacity Forecast (avg)



- An "Azure Resources Group Service Overview" dashboard, which includes the following widgets that display overview data about your Microsoft Azure services:
 - Azure Subscriptions
 - Azure Resource Group Services
 - Resource Group Services Availability (avg)
 - Resource Group Availability
 - Events
 - Selected Resource Group Availability

Enhancements and Issues Addressed

The following enhancements and addressed issues are included in version 102 of the *Microsoft Azure: SL1 Dashboards* PowerPack:

- Autoselect for context-driving widgets has been enabled in all dashboards.
- The Selected Load Balancer SNAT Count Forecast and Selected Load Balancer Network Usage Forecast widgets were added to the "Azure Load Balancer Overview" dashboard.
- The Selected CPU Utilization Forecast widget was added to the "Azure VM Service Overview" dashboard.
- The Total Used Capacity Forecast widget was added to the "Azure Storage Service Overview" dashboard.
- The Selected CPU Utilization Forecast widget was added to the "Azure VM Scale Set Overview" dashboard.

Known Issues

Version 102 of the *Microsoft Azure: SL1 Dashboards* PowerPack does not have any known issues.

© 2003 - 2021, ScienceLogic, Inc.

All rights reserved.

LIMITATION OF LIABILITY AND GENERAL DISCLAIMER

ALL INFORMATION AVAILABLE IN THIS GUIDE IS PROVIDED "AS IS," WITHOUT WARRANTY OF ANY KIND, EITHER EXPRESS OR IMPLIED. SCIENCELOGIC™ AND ITS SUPPLIERS DISCLAIM ALL WARRANTIES, EXPRESS OR IMPLIED, INCLUDING, BUT NOT LIMITED TO, THE IMPLIED WARRANTIES OF MERCHANTABILITY, FITNESS FOR A PARTICULAR PURPOSE OR NON-INFRINGEMENT.

Although ScienceLogic™ has attempted to provide accurate information on this Site, information on this Site may contain inadvertent technical inaccuracies or typographical errors, and ScienceLogic™ assumes no responsibility for the accuracy of the information. Information may be changed or updated without notice. ScienceLogic™ may also make improvements and / or changes in the products or services described in this Site at any time without notice.

Copyrights and Trademarks

ScienceLogic, the ScienceLogic logo, and EM7 are trademarks of ScienceLogic, Inc. in the United States, other countries, or both.

Below is a list of trademarks and service marks that should be credited to ScienceLogic, Inc. The ® and ™ symbols reflect the trademark registration status in the U.S. Patent and Trademark Office and may not be appropriate for materials to be distributed outside the United States.

- ScienceLogic™
- EM7™ and em7™
- Simplify IT™
- Dynamic Application™
- Relational Infrastructure Management™

The absence of a product or service name, slogan or logo from this list does not constitute a waiver of ScienceLogic's trademark or other intellectual property rights concerning that name, slogan, or logo.

Please note that laws concerning use of trademarks or product names vary by country. Always consult a local attorney for additional guidance.

Other

If any provision of this agreement shall be unlawful, void, or for any reason unenforceable, then that provision shall be deemed severable from this agreement and shall not affect the validity and enforceability of any remaining provisions. This is the entire agreement between the parties relating to the matters contained herein.

In the U.S. and other jurisdictions, trademark owners have a duty to police the use of their marks. Therefore, if you become aware of any improper use of ScienceLogic Trademarks, including infringement or counterfeiting by third parties, report them to Science Logic's legal department immediately. Report as much detail as possible about the misuse, including the name of the party, contact information, and copies or photographs of the potential misuse to: legal@sciencelogic.com



800-SCI-LOGIC (1-800-724-5644)

International: +1-703-354-1010