



Cisco ACI: SL1 Dashboards PowerPack Release Notes

Version 102

Table of Contents

Overview	3
Before You Install	3
Installation Process	3
Included Features	5
Enhancements and Issues Addressed	15

Overview

Version 102 of the *Cisco ACI: SL1 Dashboards PowerPack* includes autoselect for context-driving widgets and the addition of forecast widgets to some dashboards.

NOTE: These dashboards are intended for use only in the new user interface for SL1 and will not load in the classic ScienceLogic platform user interface.

- **Minimum Required SL1 Version:** 8.12.1
- **Minimum Required AP2 Version:** 5.125.44
- **Minimum Required Widget Components Version:** 2.174.3
- **Minimum Required Cisco: ACI PowerPack Version:** 106
- **Support Status:** Beta

This document describes:

- [Pre-install information](#)
- [The installation process for the PowerPack](#)
- [The features included in version 102](#)
- [The enhancements and issues addressed in version 102](#)

Before You Install

Before installing the *Cisco ACI: SL1 Dashboards PowerPack* version 102, you must first ensure that you are running version 8.12.1 or later of SL1, AP2 version 5.125.44 or later, and Widget Components version 2.174.3 or later.

NOTE: For details on upgrading SL1, see the appropriate SL1 [Release Notes](#).

You must also import and install the *Cisco: ACI PowerPack* version 106 or later before installing the *Cisco ACI: SL1 Dashboards PowerPack* version 102.

Installation Process

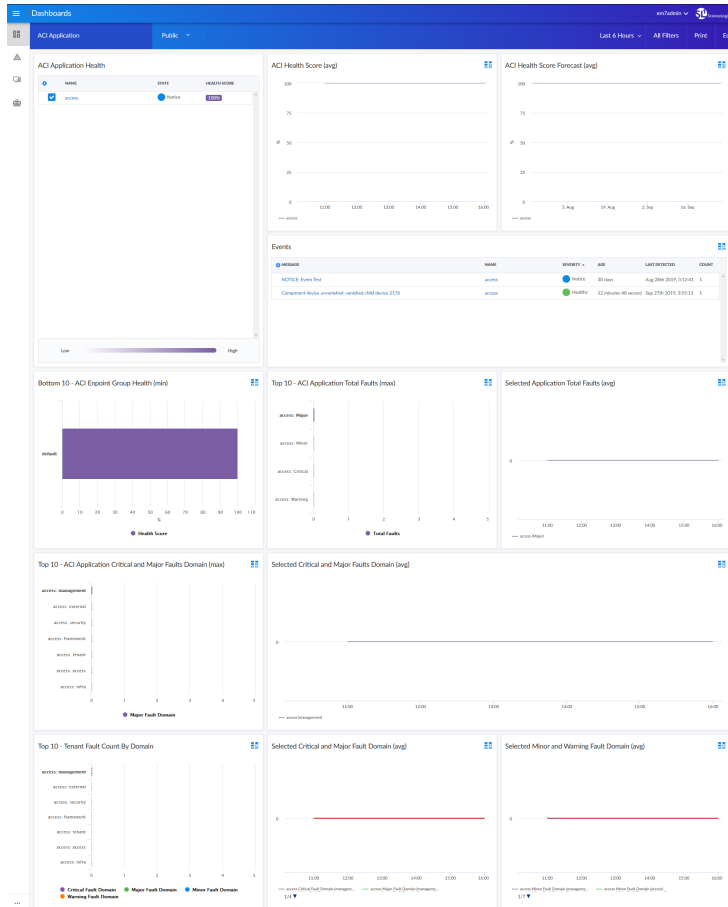
To install version 102 of the *Cisco ACI: SL1 Dashboards PowerPack*, perform the following steps:

1. If you have not done so already, upgrade your SL1 system to the 8.12.1 or later release.
2. If you have not done so already, install the *Cisco: ACI PowerPack* version 106 or greater.

3. Download version 102 of the *Cisco ACI: SL1 Dashboards* PowerPack from the Customer Portal to a local computer.
4. Go to the **PowerPack Manager** page (System > Manage > PowerPacks). Click the **[Actions]** menu and choose *Import PowerPack*. When prompted, import version 102 of the *Cisco ACI: SL1 Dashboards* PowerPack.
5. After importing the PowerPack, you will be prompted to install the PowerPack. Click the **[Install]** button to install the PowerPack.

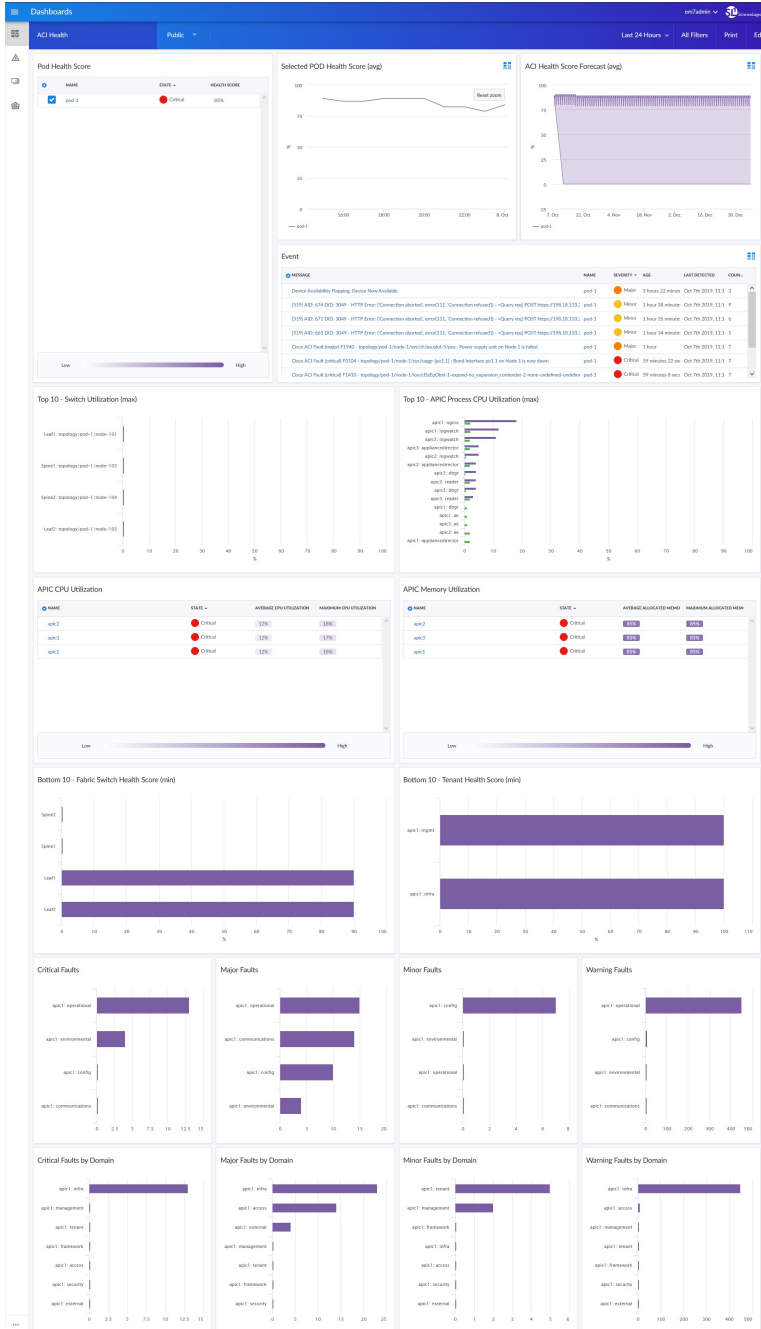
Included Features

The following dashboards are included in version 102 of the *Cisco ACI: SLI Dashboards PowerPack*:



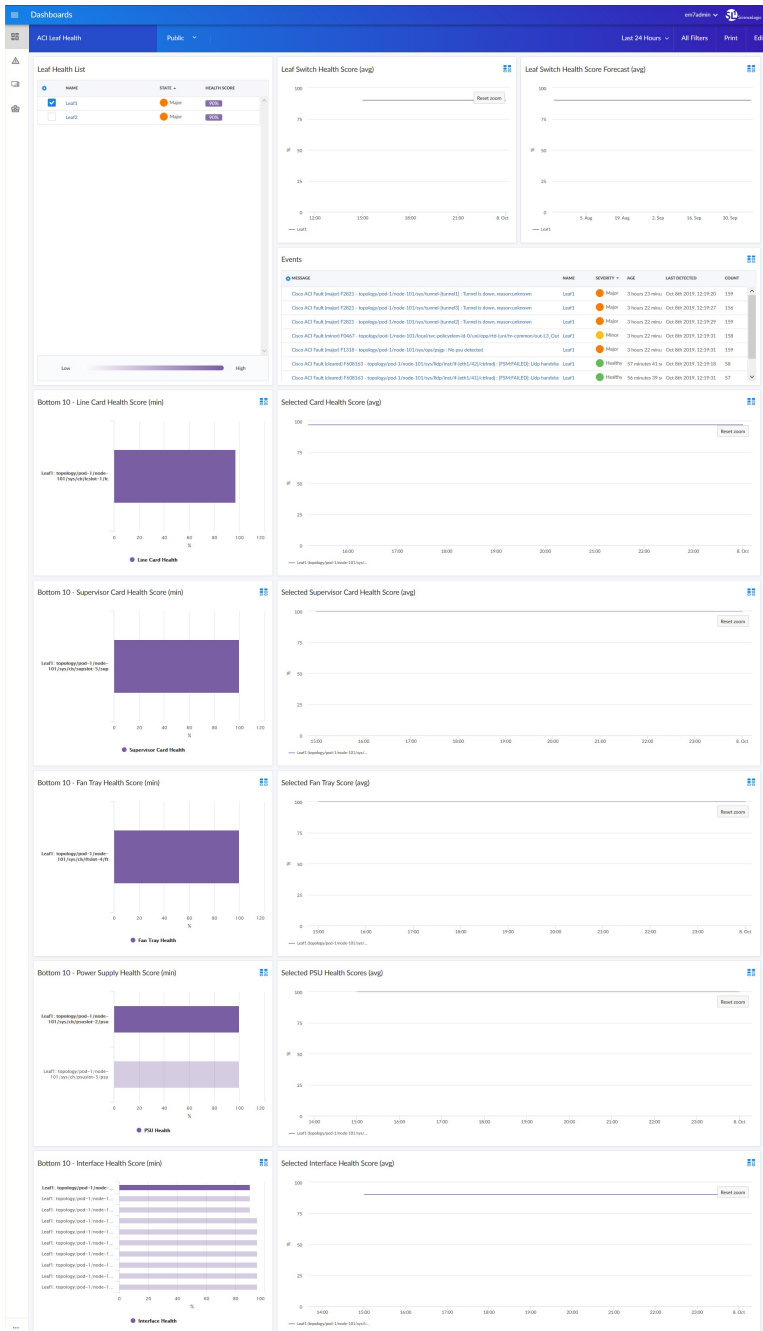
- An "ACI Application" dashboard, which includes the following widgets that display overview data about your ACI applications:
 - ACI Application Health
 - ACI Health Score (avg)
 - ACI Health Score Forecast (avg)
 - Events
 - Bottom 10 - ACI Endpoint Group Health (min)
 - Top 10 - ACI Application Total Faults (max)
 - Selected Application Total Faults (avg)
 - Top 10 - ACI Application Critical and Major Faults Domain (max)
 - Selected Critical and Major Faults Domain (avg)

- Top 10 - Tenant Fault count by Domain
- Selected Critical and Major Fault Domain (avg)
- Selected Minor and Warning Fault Domain (avg)



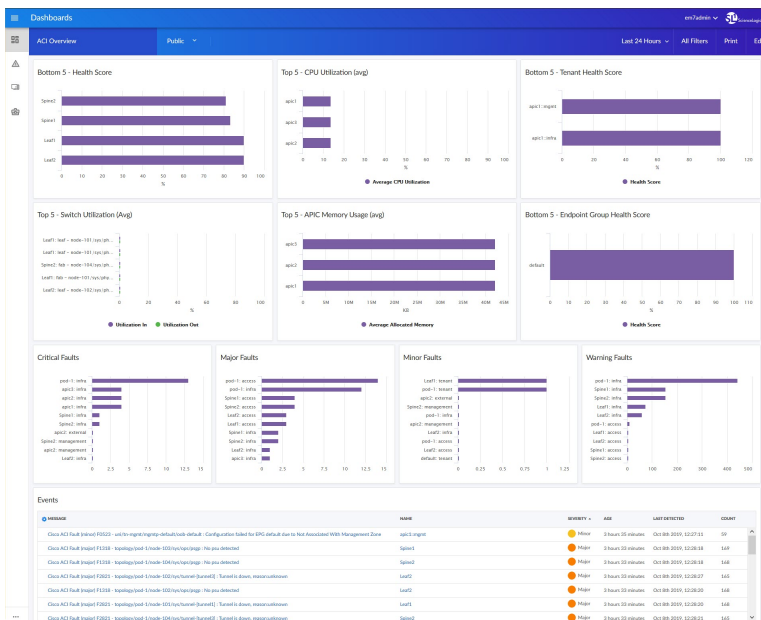
- An "ACI Health" dashboard, which includes the following widgets that display data about your ACI devices:

- Pod Health Score
- Selected Pod Health Score (avg)
- ACI Health Score Forecast (avg)
- Events
- Top 10 - APIC Process CPU Utilization (max)
- Top 10 - Switch Utilization (max)
- APIC CPU Utilization
- APIC Memory Utilization
- Bottom 10 - Fabric Switch Health Score (min)
- Bottom 10 - Tenant Health Score (min)
- Critical Faults
- Major Faults
- Minor Faults
- Warning Faults
- Critical Faults by Domain
- Major Faults by Domain
- Minor Faults by Domain
- Warning Faults by Domain



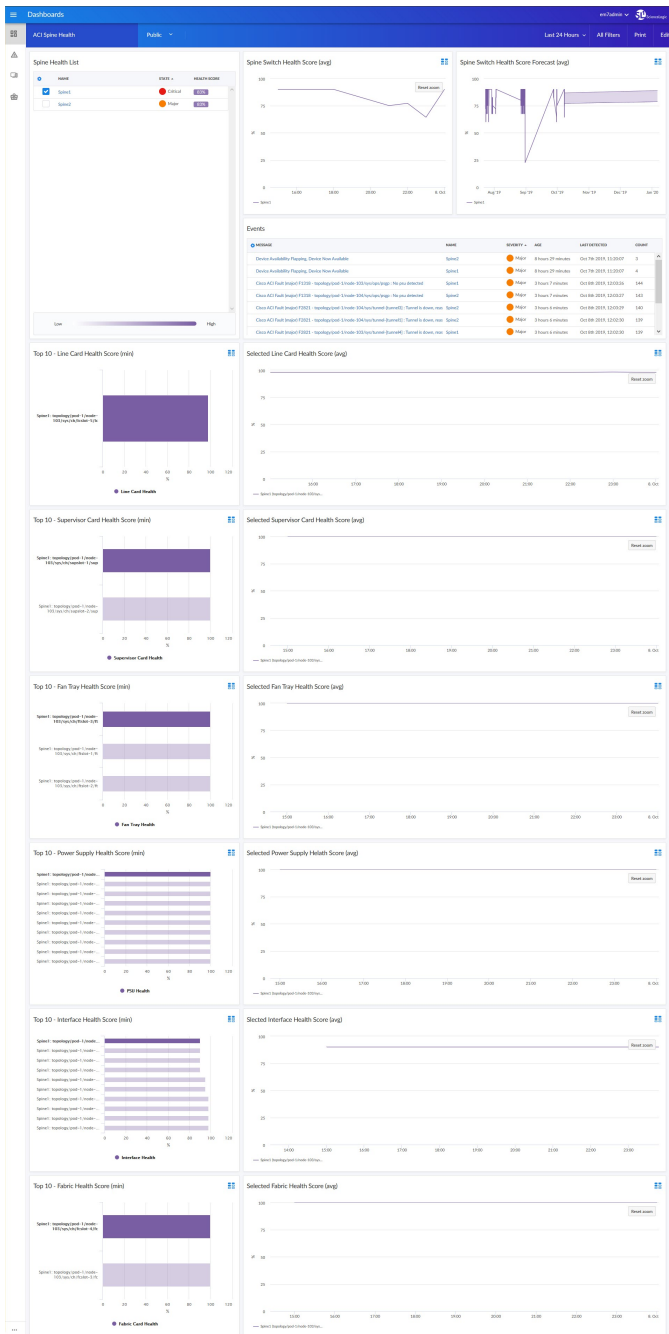
- An "ACI Leaf Health" dashboard, which includes the following widgets that display data about your ACI leafs:
 - Leaf Health List
 - Leaf Switch Health Score (avg)
 - Leaf Switch Health Score Forecast (avg)
 - Events
 - Bottom 10 - Line Card Health Score (min)

- Selected Card Health Score (avg)
- Bottom 10 - Supervisor Card Health Score (min)
- Selected Supervisor Card Health Score (avg)
- Bottom 10 - Fan Tray Health Score (min)
- Selected Fan Tray Score (avg)
- Bottom 10 - Power Supply Health Score (min)
- Selected PSU Health Score (avg)
- Bottom 10 - Interface Health Score (min)
- Selected Interface Health Score (avg)



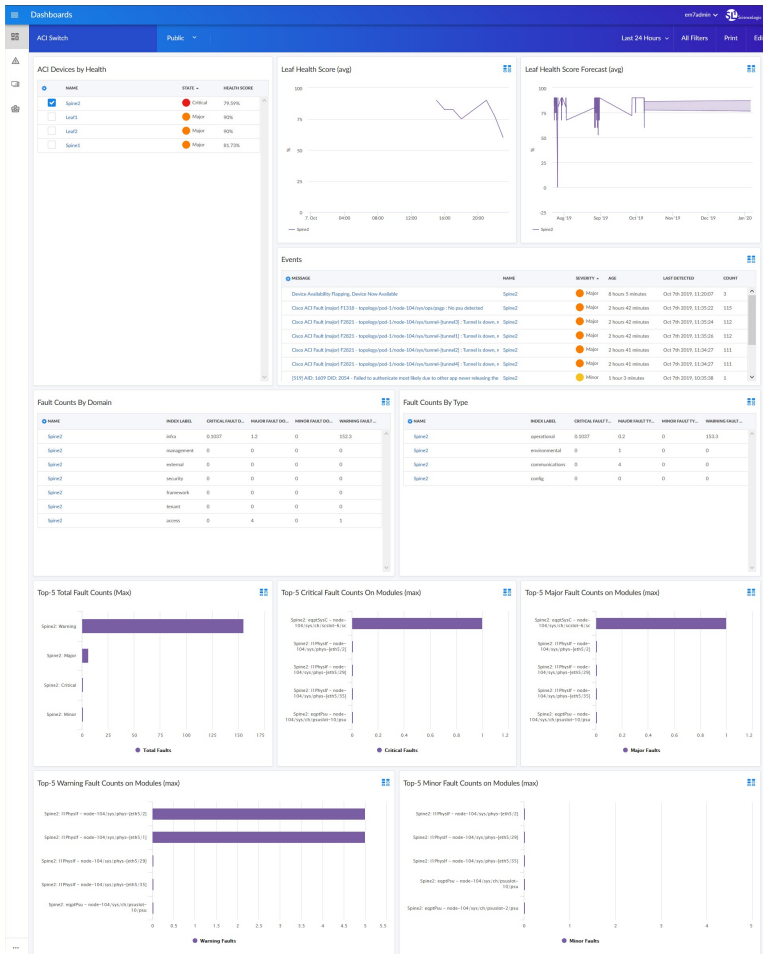
- An "ACI Overview" dashboard, which includes the following widgets that display data about your ACI devices:
 - Bottom 5 - Health Score
 - Top 5 - CPU Utilization (avg)
 - Bottom 5 - Tenant Health Score
 - Top 5 - Switch Utilization (avg)
 - Top 5 - APIC Memory Usage (avg)
 - Bottom 5 - Endpoint Group Health Score
 - Critical Faults
 - Major Faults
 - Minor Faults

- Warning Faults
- Events

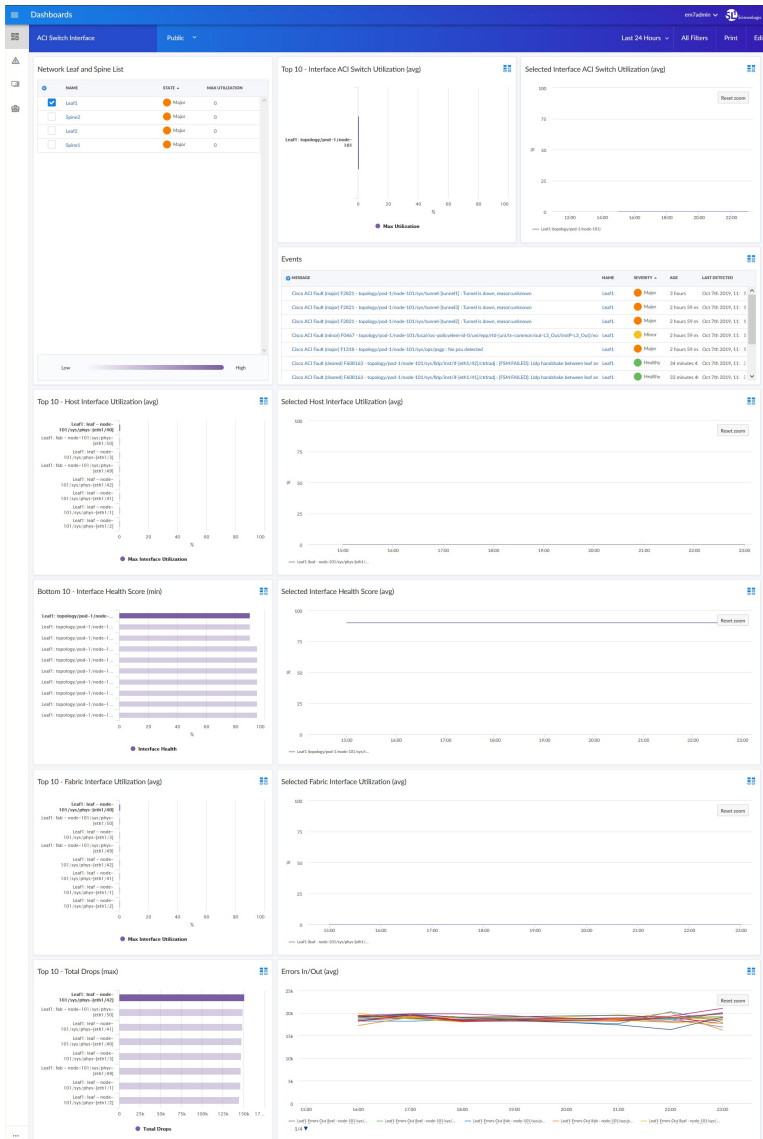


- An "ACI Spine Health" dashboard, which includes the following widgets that display data about your ACI spines:

- Spine Health List
- Spine Switch Health Score (avg)
- Spine Switch Health Score Forecast (avg)
- Events
- Top 10 - Line Card Health Score (min)
- Selected Line Card Health Score (avg)
- Top 10 - Supervisor Card Health Score (min)
- Selected Supervisor Card Health Score (avg)
- Top 10 - Fan Tray Health Score (min)
- Selected Fan Tray Health Score (avg)
- Top 10 - Power Supply Health Score (min)
- Selected Power Supply Health Score (avg)
- Top 10 - Interface Health Score (min)
- Selected Interface Health Score (avg)
- Top 10 - Fabric Health Score (min)
- Selected Fabric Health Score (avg)

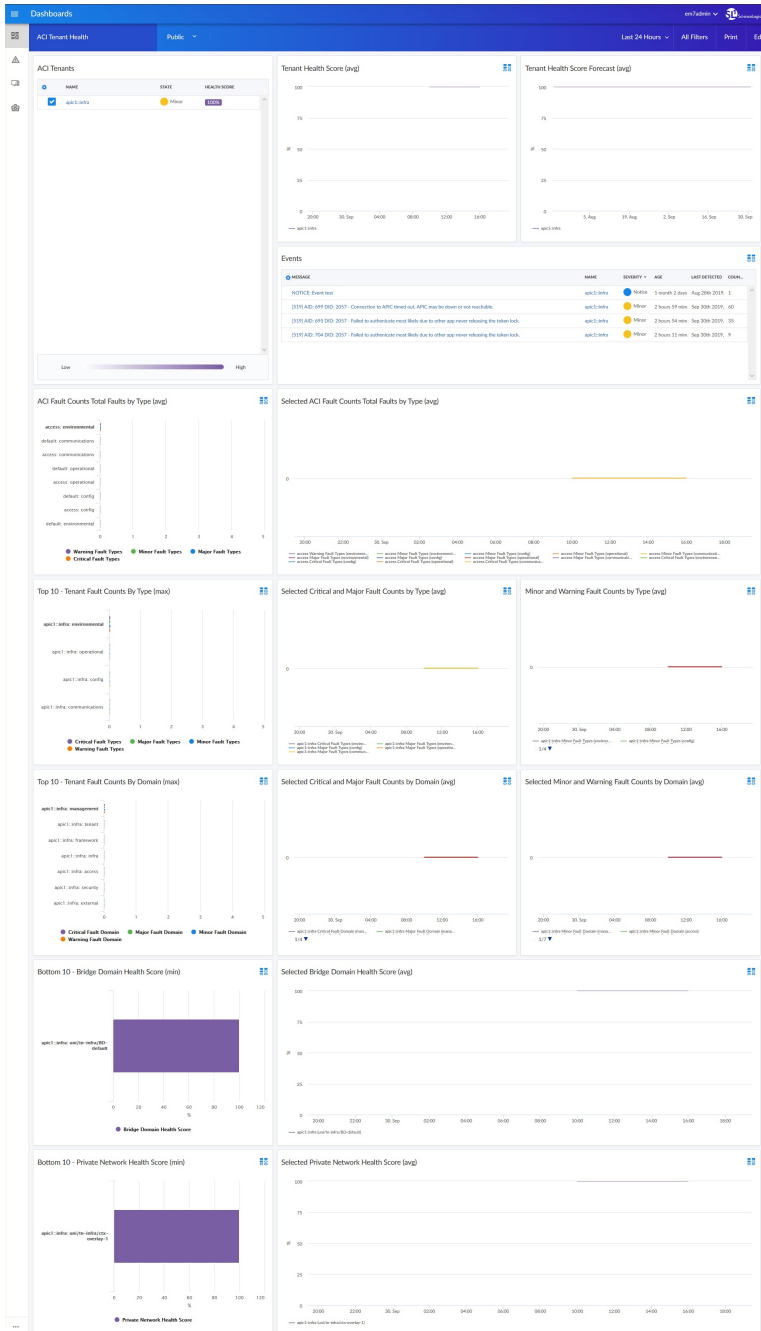


- An "ACI Switch" dashboard, which includes the following widgets that display data about your ACI switches:
 - ACI Devices by Health
 - Leaf Health Score (avg)
 - Leaf Health Score Forecast (avg)
 - Events
 - Fault Counts by Domain
 - Fault Counts by Type
 - Top 5 - Total Fault Counts (max)
 - Top 5 - Critical Fault Counts on Modules (max)
 - Top 5 - Major Fault Counts on Modules (max)
 - Top 5 - Warning Fault Counts on Modules (max)
 - Top 5 - Minor Fault Counts on Modules (max)



- An "ACI Switch Interface" dashboard, which includes the following widgets that display data about your ACI switch interfaces:
 - Network Leaf and Spine List
 - Top 10 - Interface ACI Switch Utilization (avg)
 - Selected Interface ACI Switch Utilization (avg)
 - Events
 - Top 10 - Host Interface Utilization (avg)
 - Selected Host Utilization (avg)
 - Bottom 10 - Interface Health Score (min)
 - Selected Interface Health Score (avg)

- Top 10 - Fabric Interface Utilization (avg)
- Selected Fabric Interface Utilization (avg)
- Top 10 - Total Drops (max)
- Errors In/Out (avg)



- An "ACI Tenant Health" dashboard, which includes the following widgets that display data about your ACI tenants:

- ACI Tenants
- Tenant Health Score (avg)
- Tenant Health Score Forecast (avg)
- Events
- ACI Total Fault Counts By Type (avg)
- Selected ACI Fault Counts Total Faults By Type (avg)
- Top 10 - Total Fault Counts By Type (max)
- Selected Critical and Major Fault Counts by Type (avg)
- Minor and Warning Fault Counts by Type (avg)
- Top 10 - Tenant Fault Counts By Domain (max)
- Selected Critical and Major Fault Counts By Domain (avg)
- Selected Minor and Warning Fault Counts By Domain (avg)
- Bottom 10 - Bridge Domain Health Score (min)
- Selected Bridge Domain Health Score (avg)
- Bottom 10 - Private Network Health Score (min)
- Selected Private Network Health Score (avg)

Enhancements and Issues Addressed

The following enhancements and addressed issues are included in version 102 of the *Cisco ACI: SL1 Dashboards PowerPack*:

- Autoselect for context-driving widgets has been enabled in all dashboards in the PowerPack.
- The ACI Health Score Forecast widget was added to the "ACI Application" dashboard.
- The ACI Health Score Forecast and Events widgets were added to the "ACI Health" dashboard.
- The Leaf Switch Health Score Forecast widget was added to the "ACI Leaf Health" dashboard.
- The Spine Switch Health Score Forecast widget was added to the "ACI Spine Health" dashboard.
- The Leaf Health Score Forecast widget was added to the "ACI Switch" dashboard.
- The Events widget was added to the "ACI Switch Interface" dashboard.
- The Tenant Health Score Forecast widget was added to the "ACI Tenant Health" dashboard.

© 2003 - 2019, ScienceLogic, Inc.

All rights reserved.

LIMITATION OF LIABILITY AND GENERAL DISCLAIMER

ALL INFORMATION AVAILABLE IN THIS GUIDE IS PROVIDED "AS IS," WITHOUT WARRANTY OF ANY KIND, EITHER EXPRESS OR IMPLIED. SCIENCELOGIC™ AND ITS SUPPLIERS DISCLAIM ALL WARRANTIES, EXPRESS OR IMPLIED, INCLUDING, BUT NOT LIMITED TO, THE IMPLIED WARRANTIES OF MERCHANTABILITY, FITNESS FOR A PARTICULAR PURPOSE OR NON-INFRINGEMENT.

Although ScienceLogic™ has attempted to provide accurate information on this Site, information on this Site may contain inadvertent technical inaccuracies or typographical errors, and ScienceLogic™ assumes no responsibility for the accuracy of the information. Information may be changed or updated without notice. ScienceLogic™ may also make improvements and / or changes in the products or services described in this Site at any time without notice.

Copyrights and Trademarks

ScienceLogic, the ScienceLogic logo, and EM7 are trademarks of ScienceLogic, Inc. in the United States, other countries, or both.

Below is a list of trademarks and service marks that should be credited to ScienceLogic, Inc. The ® and ™ symbols reflect the trademark registration status in the U.S. Patent and Trademark Office and may not be appropriate for materials to be distributed outside the United States.

- ScienceLogic™
- EM7™ and em7™
- Simplify IT™
- Dynamic Application™
- Relational Infrastructure Management™

The absence of a product or service name, slogan or logo from this list does not constitute a waiver of ScienceLogic's trademark or other intellectual property rights concerning that name, slogan, or logo.

Please note that laws concerning use of trademarks or product names vary by country. Always consult a local attorney for additional guidance.

Other

If any provision of this agreement shall be unlawful, void, or for any reason unenforceable, then that provision shall be deemed severable from this agreement and shall not affect the validity and enforceability of any remaining provisions. This is the entire agreement between the parties relating to the matters contained herein.

In the U.S. and other jurisdictions, trademark owners have a duty to police the use of their marks. Therefore, if you become aware of any improper use of ScienceLogic Trademarks, including infringement or counterfeiting by third parties, report them to Science Logic's legal department immediately. Report as much detail as possible about the misuse, including the name of the party, contact information, and copies or photographs of the potential misuse to: legal@sciencelogic.com



800-SCI-LOGIC (1-800-724-5644)

International: +1-703-354-1010