



Cisco CUCM: SL1 Dashboards PowerPack Release Notes

Version 102

Table of Contents

Overview	3
Before You Install	3
Installation Process	4
Included Features	5
Enhancements and Issues Addressed	14

Overview

Version 102 of the *Cisco CUCM: SL1 Dashboards PowerPack* includes autoselect for context-driving widgets and the addition of events and forecast widgets to some dashboards.

NOTE: These dashboards are intended for use only in the new SL1 user interface and will not load in the classic ScienceLogic platform user interface.

- **Minimum Required SL1 Version:** 8.12.1
- **Minimum Required AP2 Version:** 5.125.44
- **Minimum Required Widget Components Version:** 2.175.0
- **Minimum Required Cisco: CUCM Cisco Unified Communications Manager PowerPack Version:** 111
- **Support Status:** Beta

This document describes:

- [Pre-install information](#)
- [The installation process for the PowerPack](#)
- [The features included in version 102](#)
- [The enhancements and issues addressed in version 102](#)

Before You Install

Before installing the *Cisco CUCM: SL1 Dashboards PowerPack* version 102, you must first ensure that you are running version 8.12.1 or later of SL1, AP2 version 5.125.44 or later, and Widget Components version 2.175.0 or later.

NOTE: For details on upgrading SL1, see the appropriate SL1 [Release Notes](#).

You must also import and install the *Cisco: CUCM Cisco Unified Communications Manager PowerPack* version 111 or later before installing the *Cisco CUCM: SL1 Dashboards PowerPack* version 102.

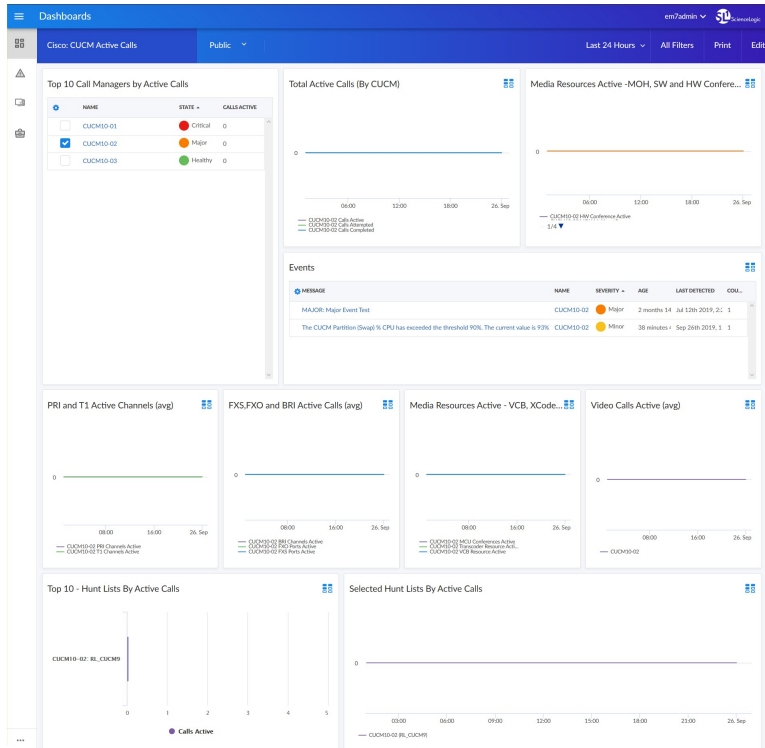
Installation Process

To install version 102 of the *Cisco CUCM: SL1 Dashboards PowerPack*, perform the following steps:

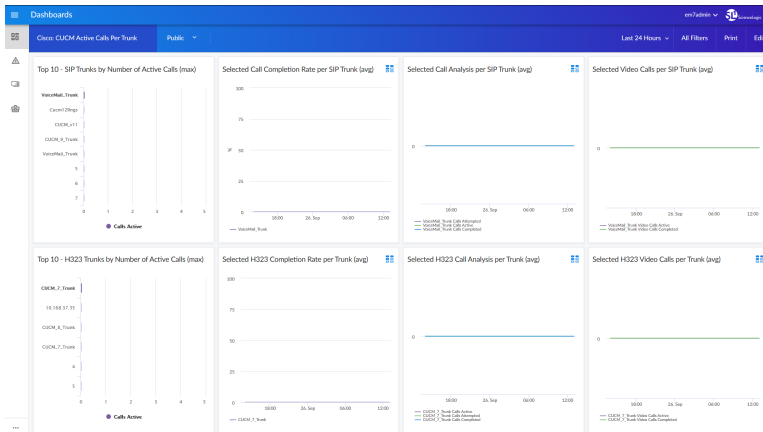
1. If you have not done so already, upgrade your SL1 system to the 8.12.1 or later release.
2. If you have not done so already, install the *Cisco: CUCM Cisco Unified Communications Manager PowerPack* version 111 or greater.
3. Download version 102 of the *Cisco CUCM: SL1 Dashboards PowerPack* from the Customer Portal to a local computer.
4. Go to the **PowerPack Manager** page (System > Manage > PowerPacks). Click the **[Actions]** menu and choose *Import PowerPack*. When prompted, import version 102 of the *Cisco CUCM: SL1 Dashboards PowerPack*.
5. After importing the PowerPack, you will be prompted to install the PowerPack. Click the **[Install]** button to install the PowerPack.

Included Features

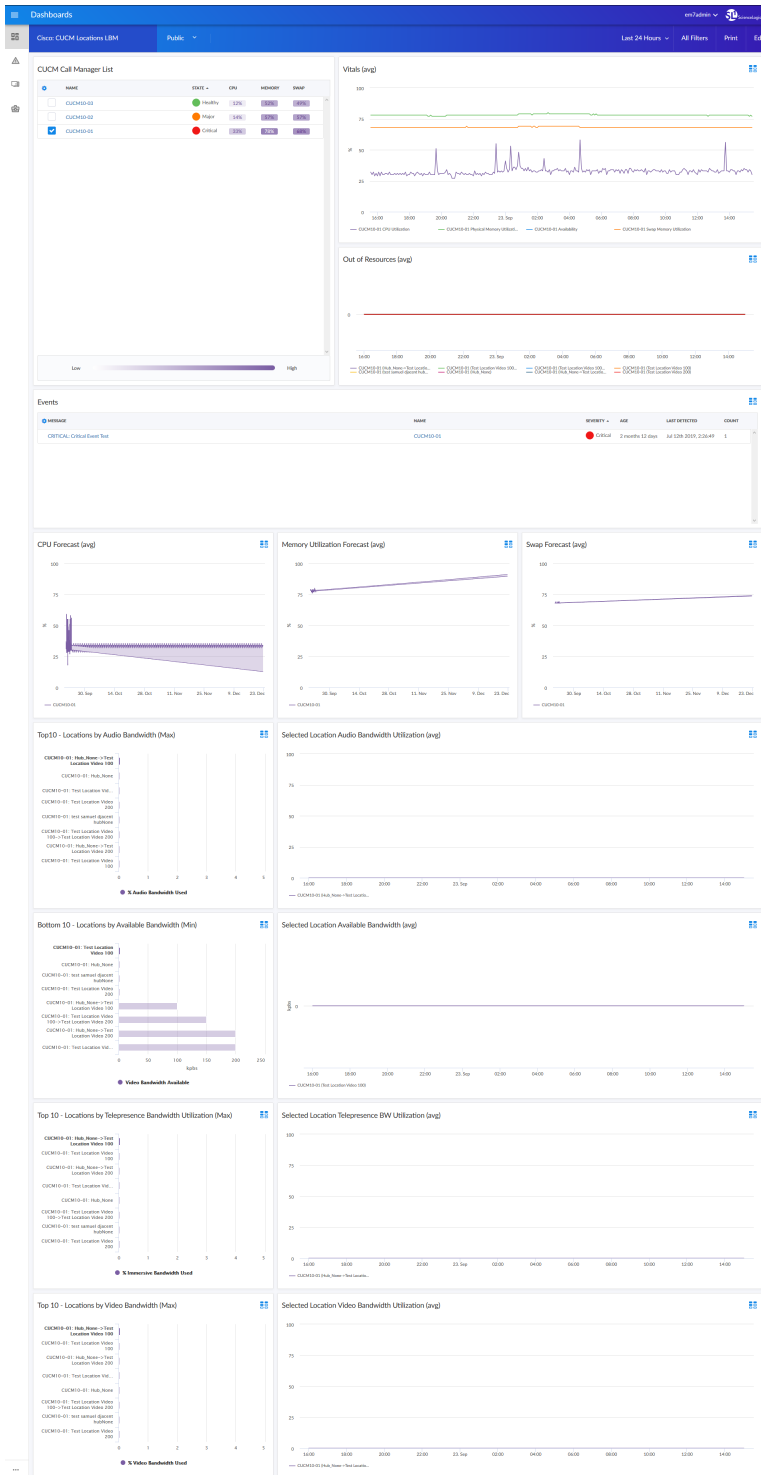
The following dashboards are included in version 102 of the *Cisco CUCM: SL1 Dashboards PowerPack*:



- A "Cisco: CUCM Active Calls" dashboard, which includes the following widgets that display overview data about your active CUCM calls:
 - Top 10 Call Managers by Active Calls
 - Total Active Calls by CUCM
 - Media Resources Active - MOH, SW, and HW Conference
 - Events
 - PRI and T1 Active Channels (avg)
 - FXS, FXO, and BRI Active Calls (avg)
 - Media Resources Active - VCB, XCode, MCU Conferences
 - Video Calls Active (avg)
 - Top 10 Hunt List by Active Calls
 - Selected Hunt Lists by Active Calls

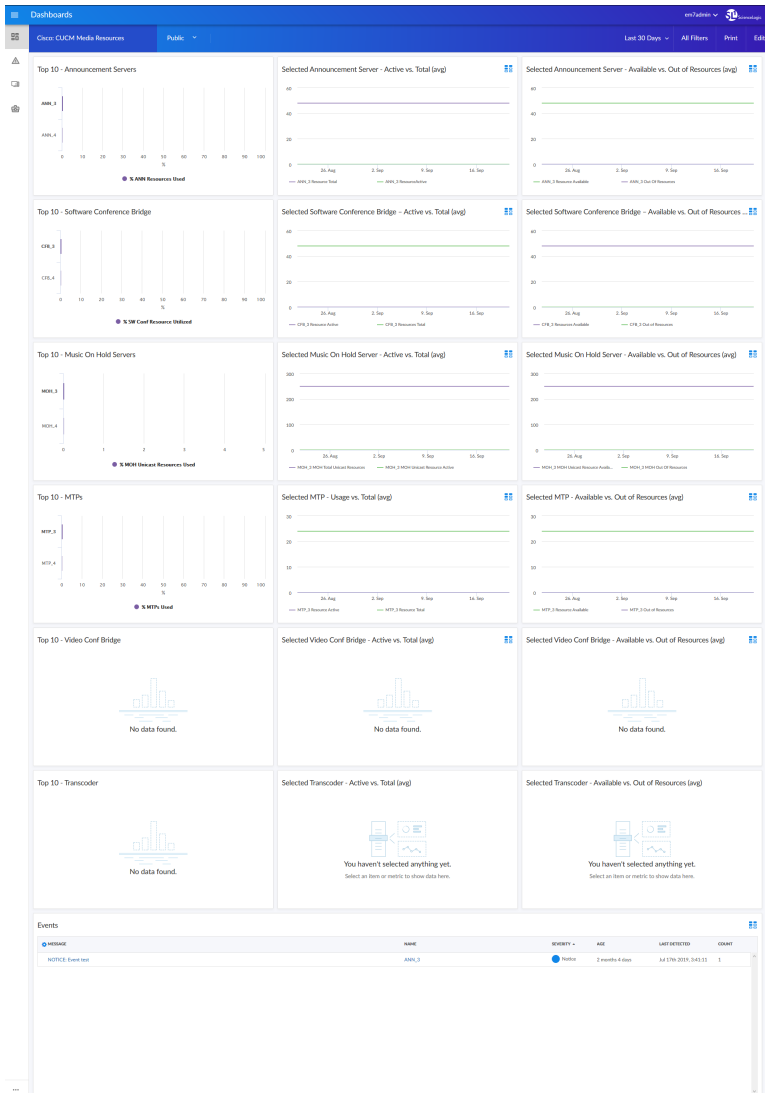


- A "Cisco: CUCM Active Calls Per Trunk" dashboard, which includes the following widgets that display data about your active CUCM calls, per trunk:
 - Top 10 - SIP Trunks by Number of Active Calls (max)
 - Selected Call Completion Rate per SIP Trunk (avg)
 - Selected Call Analysis per SIP Trunk (avg)
 - Selected Video Calls per SIP Trunk (avg)
 - Top 10 - H323 Trunks by Number of Active Calls (max)
 - Selected H323 Completion Rate per Trunk (avg)
 - Selected H323 Call Analysis per Trunk (avg)
 - Selected H323 Video Calls per Trunk (avg)



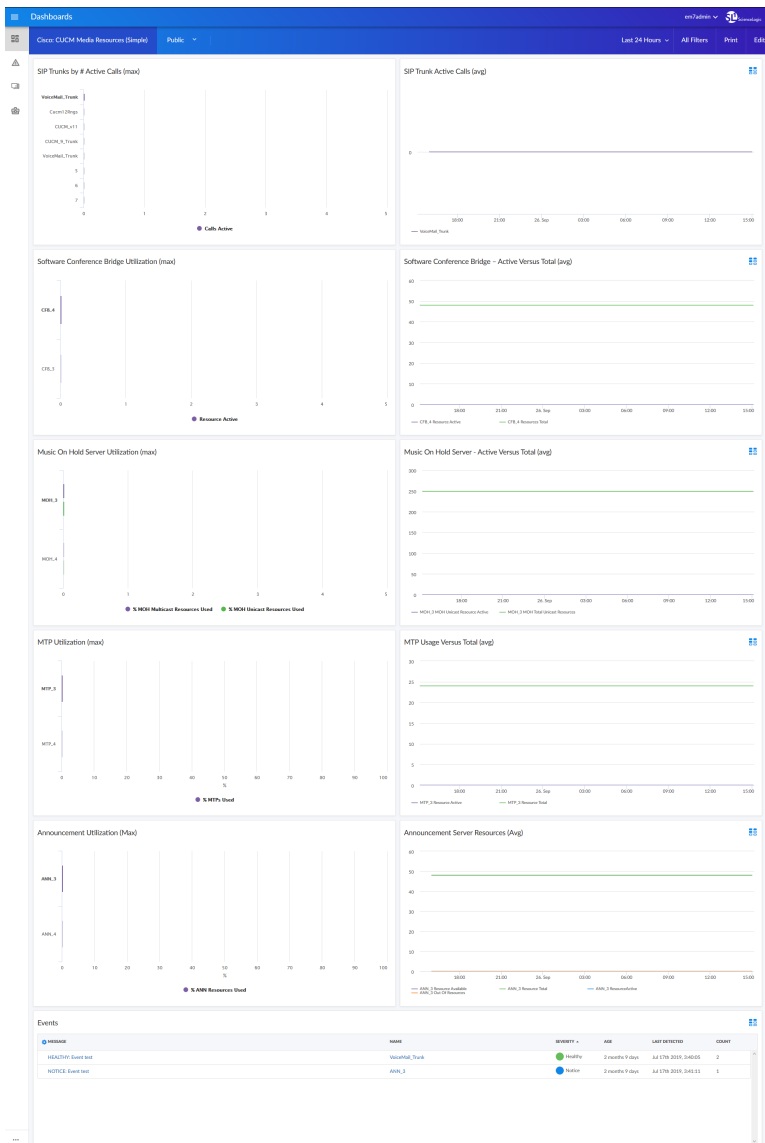
- A "Cisco: CUCM Locations LBM" dashboard, which includes the following widgets that display data about your CUCM Location Bandwidth Manager services:

- CUCM Call Manager List
- Vitals (avg)
- Out of Resources (avg)
- Events
- CPU Forecast (avg)
- Memory Utilization Forecast (avg)
- Swap Forecast (avg)
- Top 10 - Locations by Audio Bandwidth (Max)
- Selected Location Audio Bandwidth Utilization (avg)
- Bottom 10 - Locations by Available Bandwidth (Min)
- Selected Location Available Bandwidth (avg)
- Top 10 - Locations by Telepresence Bandwidth Utilization (Max)
- Selected Location Telepresence Bandwidth Utilization (avg)
- Top 10 - Locations by Video Bandwidth (Max)
- Selected Location Video Bandwidth Utilization (avg)

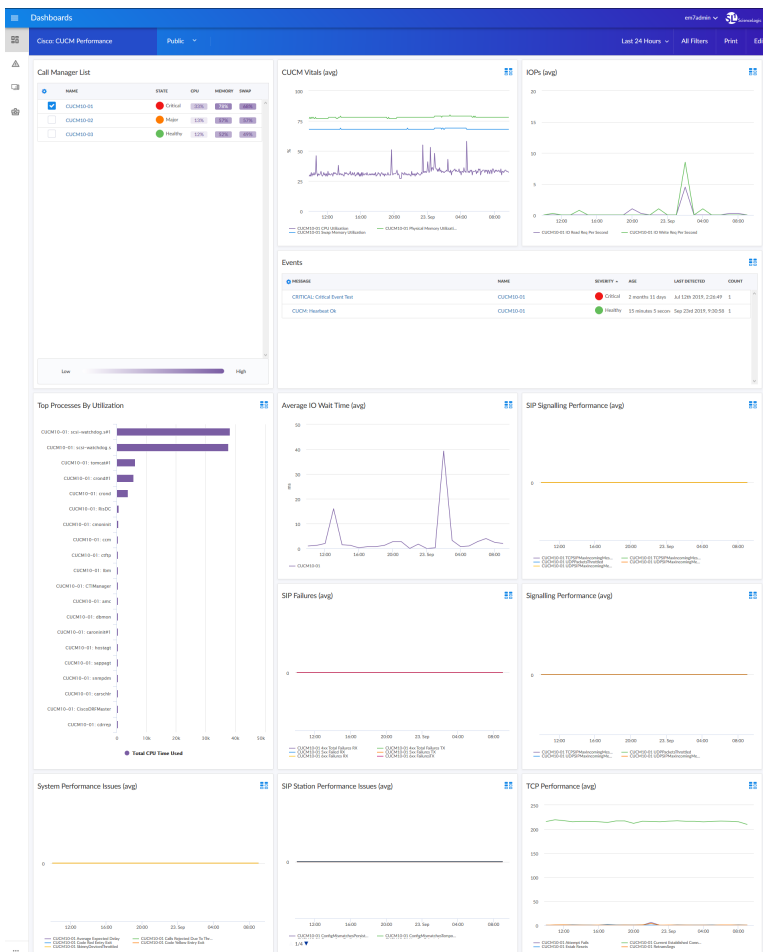


- A "Cisco: CUCM Media Resources" dashboard, which includes the following widgets that display data about your CUCM media resources:
 - Top 10 - Announcement Servers
 - Selected Announcement Server - Active vs. Total (avg)
 - Selected Announcement Server - Available vs. Out of Resources (avg)
 - Top 10 - Software Conference Bridges
 - Selected Software Conference Bridges - Active vs. Total (avg)
 - Selected Software Conference Bridges - Available vs. Out of Resources (avg)
 - Top 10 - Music On Hold Servers
 - Selected Music On Hold Servers - Active vs. Total (avg)
 - Selected Music on Hold Servers - Available vs. Out of Resources (avg)

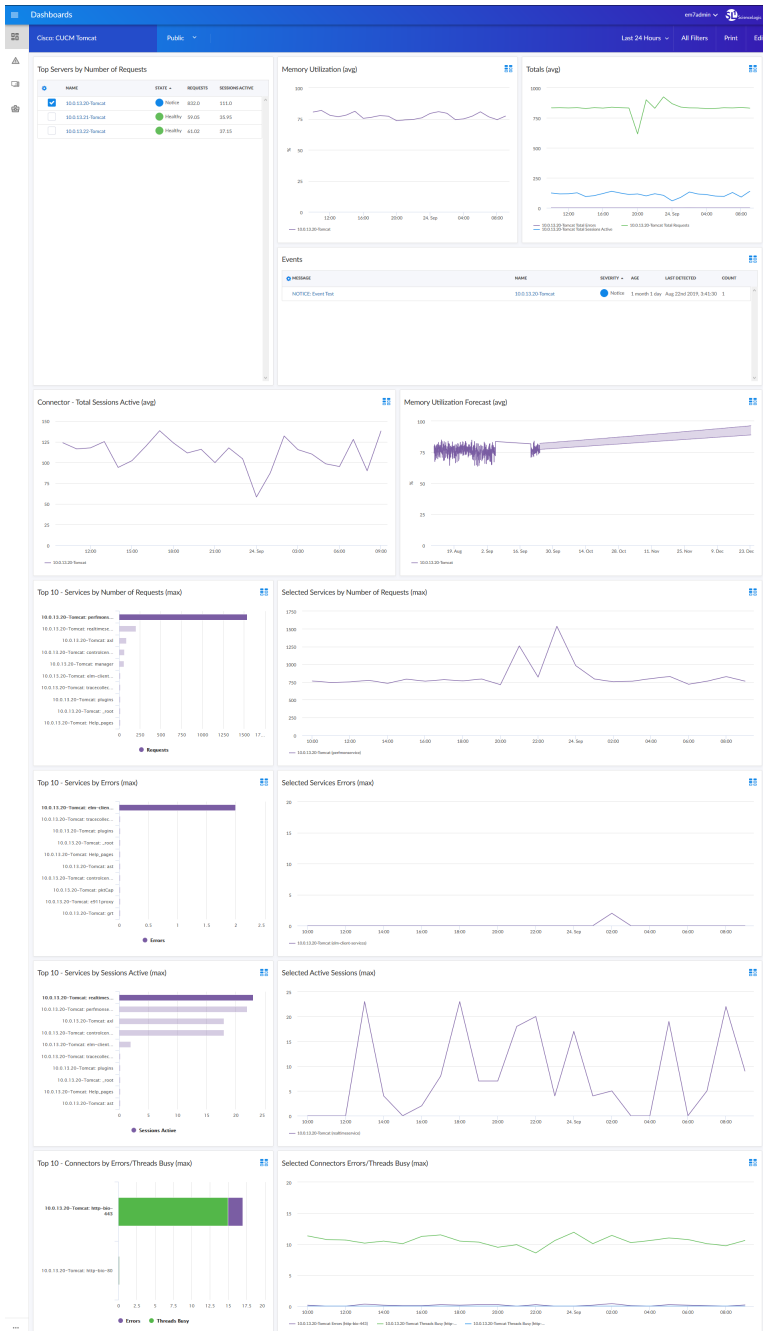
- Top 10 - MTPs
- Selected MTP - Usage vs. Total (avg)
- Selected MTP - Available vs. Out of Resources (avg)
- Top 10 - Video Conference Bridges
- Selected Video Conference Bridge - Active vs. Total (avg)
- Selected Video Conference Bridge - Available vs. Out of Resources (avg)
- Top 10 - Transcoder
- Selected Transcoder - Active vs. Total (avg)
- Selected Transcoder - Available vs. Out of Resources (avg)
- Events



- A "Cisco: CUCM Media Resources (Simple)" dashboard, which includes the following widgets that display data about your CUCM media resources:
 - SIP Trunks by Number of Active Calls (max)
 - SIP Trunk Active Calls (avg)
 - Software Conference Bridge Utilization (max)
 - Software Conference Bridge - Active Versus Total (avg)
 - Music On Hold Server Utilization (max)
 - Music On Hold Servers - Active Versus Total (avg)
 - MTP Utilization (max)
 - MTP Usage Versus Total (avg)
 - Announcement Utilization (max)
 - Announcement Server Resources (avg)
 - Events



- A "Cisco: CUCM Performance" dashboard, which includes the following widgets that display data about your CUCM devices:
 - Call Manager List
 - CUCM Vitals (avg)
 - Input/Output Per Second (avg)
 - Events
 - Top Processes by Utilization
 - Average Input/Output Wait Time (avg)
 - SIP Signaling Performance (avg)
 - SIP Failures (avg)
 - Signaling Performance (avg)
 - System Performance Issues (avg)
 - SIP Station Performance Issues (avg)
 - TCP Performance (avg)



- A "Cisco: CUCM Tomcat" dashboard, which includes the following widgets that display data about your Cisco Tomcat services:
 - Top Servers by Number of Requests
 - Memory Utilization (avg)
 - Totals (avg)
 - Events

- Connector - Total Sessions Active (avg)
- Memory Utilization Forecast (avg)
- Top 10 - Services by Number of Requests (max)
- Selected Services by Number of Requests (max)
- Top 10 - Services by Errors (max)
- Selected Services Errors (max)
- Top 10 - Services by Sessions Active (max)
- Selected Active Sessions (max)
- Top 10 - Connectors by Errors/Threads Busy (max)
- Selected Connectors Errors/Threads Busy (max)

Enhancements and Issues Addressed

The following enhancements and addressed issues are included in version 102 of the *Cisco CUCM: SL1 Dashboards PowerPack*:

- Autoselect for context-driving widgets has been enabled in all dashboards.
- The Events and Selected Hunt Lists By Active Calls widgets were added to the "Cisco: CUCM Active Calls" dashboard.
- The Events, CPU Forecast, Memory Utilization Forecast, and Swap Forecast widgets were added to the "Cisco: CUCM Locations LBM" dashboard.
- The Events widget was added to the "Cisco: CUCM Media Resources" dashboard.
- The Events widget was added to the "Cisco: CUCM Media Resources (Simple)" dashboard.
- The Events widget was added to the "Cisco: CUCM Performance" dashboard.
- The Events and Memory Utilization Forecast widgets were added to the "Cisco: CUCM Tomcat" dashboard.

© 2003 - 2019, ScienceLogic, Inc.

All rights reserved.

LIMITATION OF LIABILITY AND GENERAL DISCLAIMER

ALL INFORMATION AVAILABLE IN THIS GUIDE IS PROVIDED "AS IS," WITHOUT WARRANTY OF ANY KIND, EITHER EXPRESS OR IMPLIED. SCIENCELOGIC™ AND ITS SUPPLIERS DISCLAIM ALL WARRANTIES, EXPRESS OR IMPLIED, INCLUDING, BUT NOT LIMITED TO, THE IMPLIED WARRANTIES OF MERCHANTABILITY, FITNESS FOR A PARTICULAR PURPOSE OR NON-INFRINGEMENT.

Although ScienceLogic™ has attempted to provide accurate information on this Site, information on this Site may contain inadvertent technical inaccuracies or typographical errors, and ScienceLogic™ assumes no responsibility for the accuracy of the information. Information may be changed or updated without notice. ScienceLogic™ may also make improvements and / or changes in the products or services described in this Site at any time without notice.

Copyrights and Trademarks

ScienceLogic, the ScienceLogic logo, and EM7 are trademarks of ScienceLogic, Inc. in the United States, other countries, or both.

Below is a list of trademarks and service marks that should be credited to ScienceLogic, Inc. The ® and ™ symbols reflect the trademark registration status in the U.S. Patent and Trademark Office and may not be appropriate for materials to be distributed outside the United States.

- ScienceLogic™
- EM7™ and em7™
- Simplify IT™
- Dynamic Application™
- Relational Infrastructure Management™

The absence of a product or service name, slogan or logo from this list does not constitute a waiver of ScienceLogic's trademark or other intellectual property rights concerning that name, slogan, or logo.

Please note that laws concerning use of trademarks or product names vary by country. Always consult a local attorney for additional guidance.

Other

If any provision of this agreement shall be unlawful, void, or for any reason unenforceable, then that provision shall be deemed severable from this agreement and shall not affect the validity and enforceability of any remaining provisions. This is the entire agreement between the parties relating to the matters contained herein.

In the U.S. and other jurisdictions, trademark owners have a duty to police the use of their marks. Therefore, if you become aware of any improper use of ScienceLogic Trademarks, including infringement or counterfeiting by third parties, report them to Science Logic's legal department immediately. Report as much detail as possible about the misuse, including the name of the party, contact information, and copies or photographs of the potential misuse to: legal@sciencelogic.com



ScienceLogic

800-SCI-LOGIC (1-800-724-5644)

International: +1-703-354-1010