



F5 BIG-IP: SL1 Dashboards PowerPack Release Notes

Version 105

Table of Contents

Overview	3
Before You Install	3
Installation Process	4
Included Features	5
Enhancements and Issues Addressed	17

Overview

Version 105 of the *F5 BIG-IP: SL1 Dashboards* PowerPack includes Device Investigators that present graphical representations of the configuration data and performance metrics that are collected for a selected F5: BIG-IP device by the *F5: BIG-IP* PowerPack.

NOTE: These dashboards are intended for use only in the new SL1 user interface and will not load in the classic ScienceLogic platform user interface.

- **Minimum Required SL1 Version:** 10.2
- **Minimum Required AP2 Version:** 6.12.63
- **Minimum Required Widget Components Version:** 2.220.9
- **Minimum Required *F5 BIG-IP* PowerPack Version:** 103
- **Support Status:** Beta

This document describes:

- [Pre-install information](#)
- [The installation process for the PowerPack](#)
- [The features included in version 105](#)
- [The enhancements and issues addressed in version 105](#)

Before You Install

Before installing the *F5 BIG-IP: SL1 Dashboards* PowerPack version 105, you must first ensure that you are running version 10.2 or later of SL1, AP2 version 6.12.63 or later, and Widget Components version 2.220.9 or later.

NOTE: For details on upgrading SL1, see the appropriate SL1 [Release Notes](#).

You must also import and install the *F5 BIG-IP* PowerPack version 103 or later before installing the *F5 BIG-IP: SL1 Dashboards* PowerPack version 105.

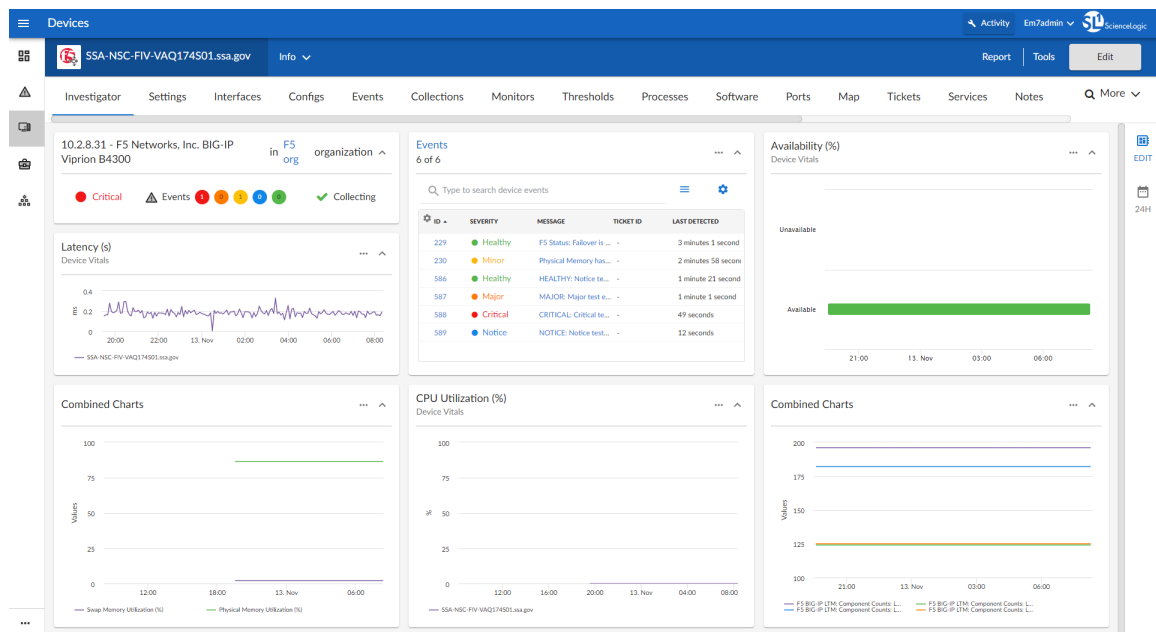
Installation Process

To install version 105 of the *F5 BIG-IP: SL1 Dashboards* PowerPack, perform the following steps:

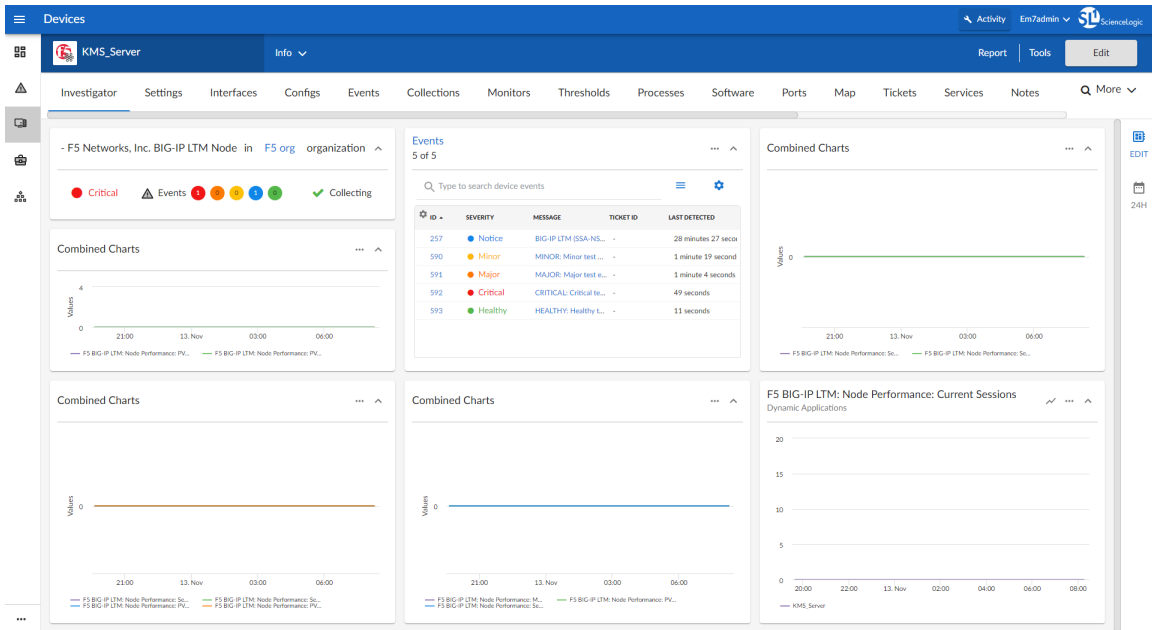
1. If you have not done so already, upgrade your SL1 system to the 10.2 or later release.
2. If you have not done so already, install the *F5 BIG-IP* PowerPack version 103 or greater.
3. Download version 105 of the *F5 BIG-IP: SL1 Dashboards* PowerPack from the Customer Portal to a local computer.
4. Go to the **PowerPack Manager** page (System > Manage > PowerPacks). Click the **[Actions]** menu and choose *Import PowerPack*. When prompted, import version 105 of the *F5 BIG-IP: SL1 Dashboards* PowerPack.
5. After importing the PowerPack, you will be prompted to install the PowerPack. Click the **[Install]** button to install the PowerPack.

Included Features

The following dashboards and device investigators are included in version 105 of the *F5 BIG-IP: SL1 Dashboards PowerPack*:

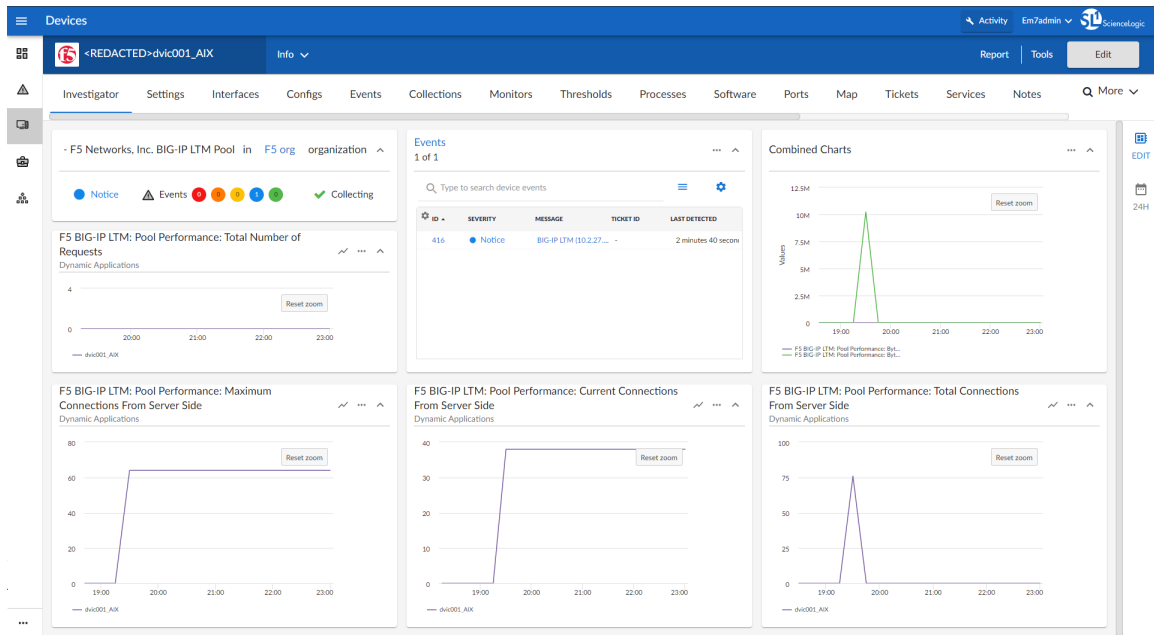


- An "F5: BIG-IP LTM Root Investigator" device investigator, which includes the following panels that display overview data about your selected F5 Big-IP LTM root:
 - Overview
 - Latency (s)
 - Events
 - Availability (%)
 - Combined Charts
 - Physical Memory Utilization
 - Swap Memory Utilization
 - CPU Utilization (%)
 - Combined Charts
 - F5 BIG-IP LTM: Component Counts: LTM Node Count
 - F5 BIG-IP LTM: Component Counts: LTM Pool Count
 - F5 BIG-IP LTM: Component Counts: LTM Virtual Server Count
 - F5 BIG-IP LTM: Component Counts: LTM Pool Member Count

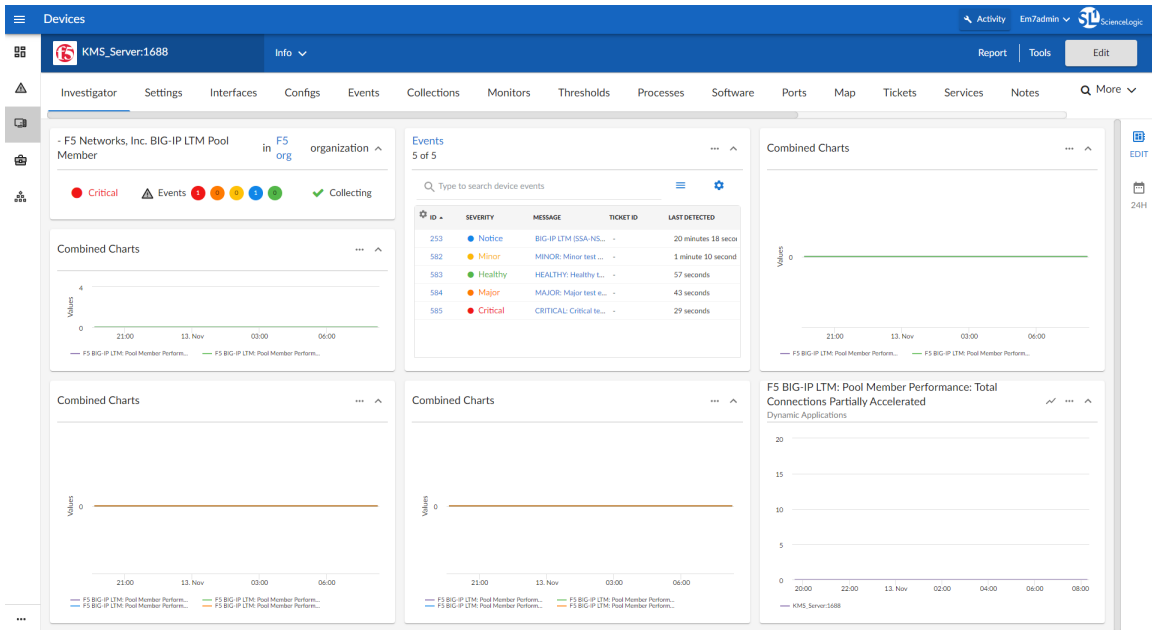


- An "F5: BIG-IP LTM Node Investigator" device investigator, which includes the following panels that display data about your selected F5 Big-IP node:
 - Overview
 - Combined Charts
 - F5 BIG-IP LTM: Node Performance: Server Side Bytes Received
 - F5 BIG-IP LTM: Node Performance: Server Side Bytes Sent
 - Events
 - Combined Charts
 - F5 BIG-IP LTM: Node Performance: PVA Bytes Received
 - F5 BIG-IP LTM: Node Performance: PVA Bytes Sent
 - Combined Charts
 - F5 BIG-IP LTM: Node Performance: Server Side Packets Received
 - F5 BIG-IP LTM: Node Performance: Server Side Packets Sent
 - F5 BIG-IP LTM: Node Performance: PVA Packets Received
 - F5 BIG-IP LTM: Node Performance: PVA Packets Sent
 - Combined Charts
 - F5 BIG-IP LTM: Node Performance: Max Connections from Server Side
 - F5 BIG-IP LTM: Node Performance: Server Side Current Connections
 - F5 BIG-IP LTM: Node Performance: PVA Current Connections

- F5 BIG-IP LTM: Node Performance: Current Sessions



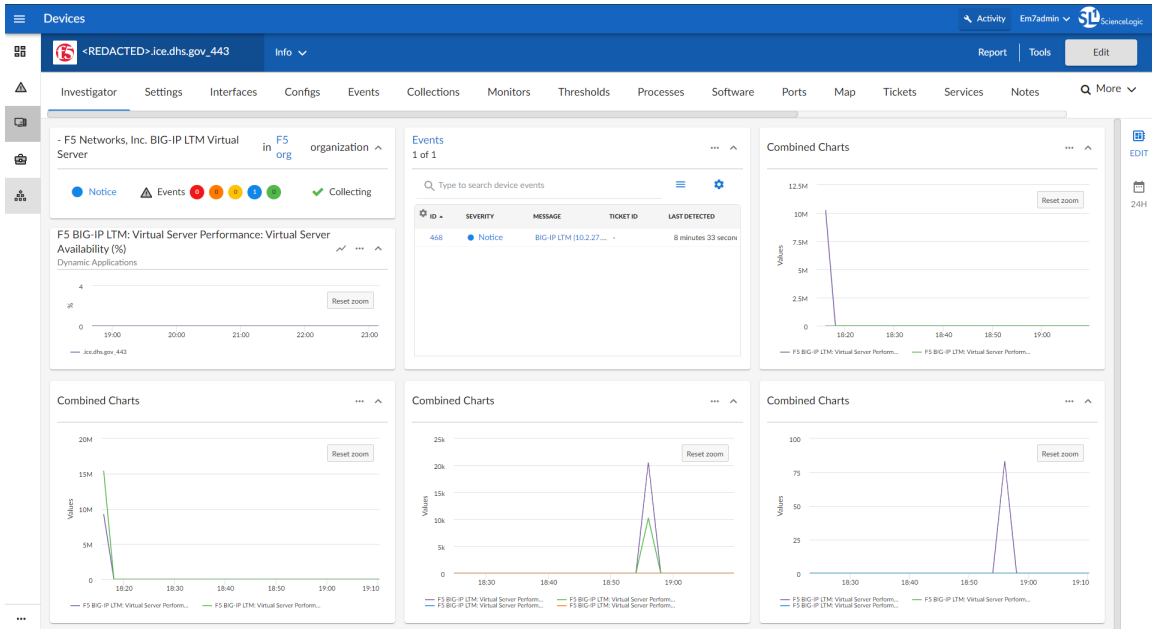
- An "F5: BIG-IP LTM Pool Investigator" device investigator, which includes the following panels that display data about your selected F5 Big-IP pool:
 - Overview
 - F5 BIG-IP LTM: Pool Performance: Total Number of Requests
 - Events
 - Combined Charts
 - F5 BIG-IP LTM: Pool Performance: Bytes Received from Server Side
 - F5 BIG-IP LTM: Pool Performance: Bytes Sent to Server Side
 - F5 BIG-IP LTM: Pool Performance: Maximum Connections from Server Side
 - F5 BIG-IP LTM: Pool Performance: Current Connections from Server Side
 - F5 BIG-IP LTM: Pool Performance: Total Connections from Server Side



- An "F5: BIG-IP LTM Pool Member Investigator" device investigator, which includes the following panels that display data about your selected F5 Big-IP pool member:

- Overview
- Combined Charts:
 - F5 BIG-IP LTM: Pool Member Performance: Server Side Bytes Received
 - F5 BIG-IP LTM: Pool Member Performance: Server Side Bytes Sent
- Events
- Combined Charts
 - F5 BIG-IP LTM: Pool Member Performance: PVA Bytes Sent
 - F5 BIG-IP LTM: Pool Member Performance: PVA Bytes Received
- Combined Charts
 - F5 BIG-IP LTM: Pool Member Performance: Server Side Packets Sent
 - F5 BIG-IP LTM: Pool Member Performance: Server Side Packets Received
 - F5 BIG-IP LTM: Pool Member Performance: PVA Packets Sent
 - F5 BIG-IP LTM: Pool Member Performance: PVA Packets Received
- Combined Charts
 - F5 BIG-IP LTM: Pool Member Performance: PVA Total Connections
 - F5 BIG-IP LTM: Pool Member Performance: PVA Current Connections
 - F5 BIG-IP LTM: Pool Member Performance: Server Side Total Connections
 - F5 BIG-IP LTM: Pool Member Performance: Server Side Current Connections

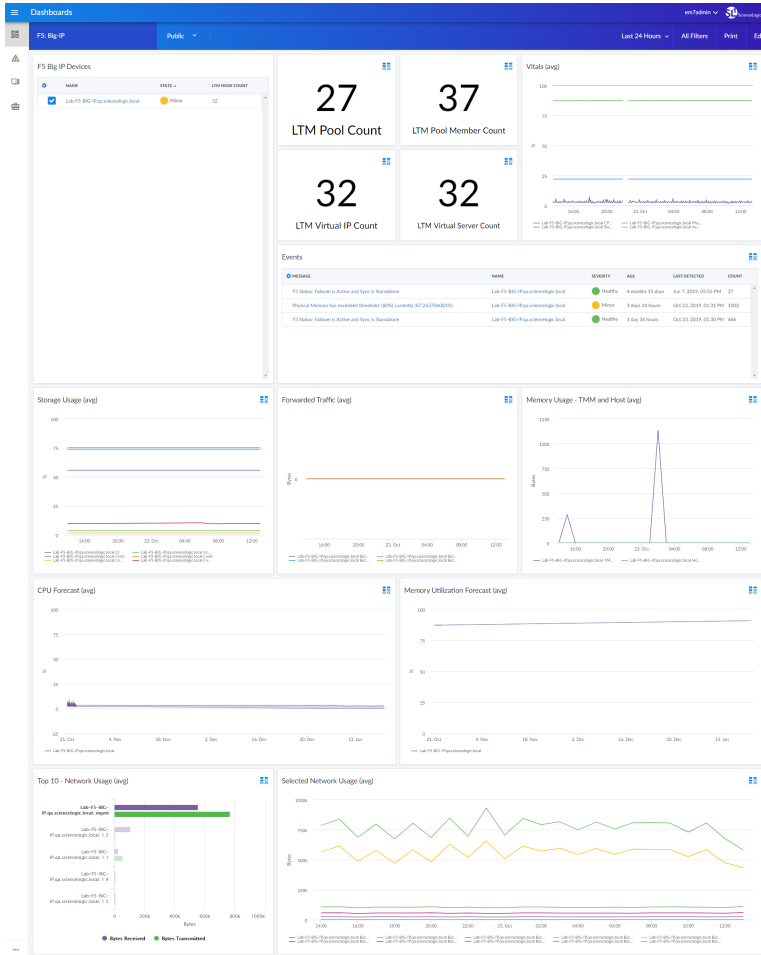
- F5 BIG-IP LTM: Pool Member Performance: Total Connections Partially Accelerated



- An "F5: BIG-IP LTM Virtual Server Investigator" device investigator, which includes the following panels that display data about your selected F5 Big-IP server:

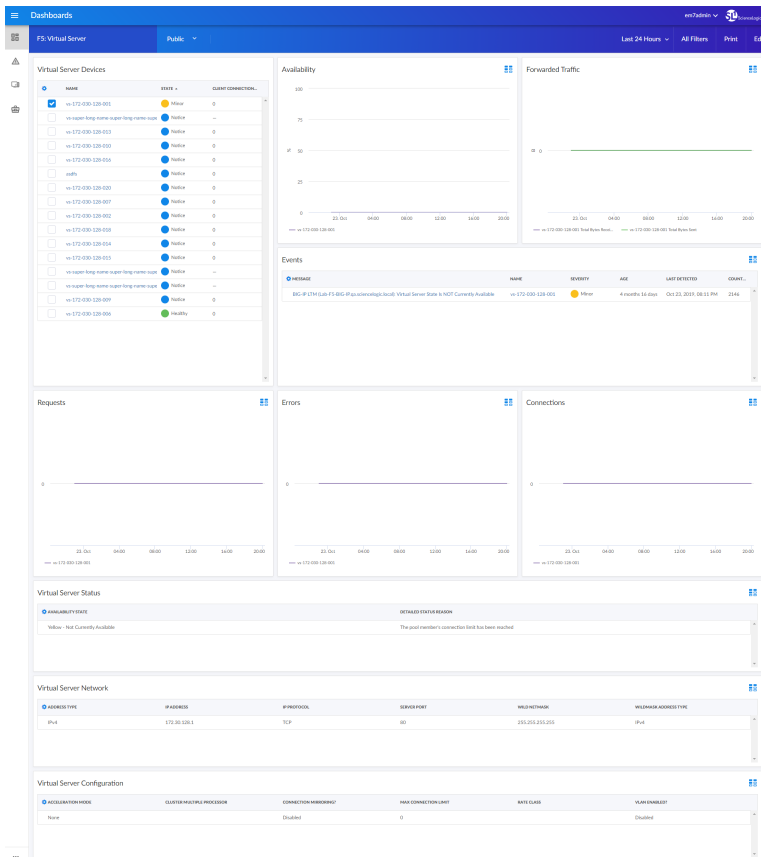
- Overview
- F5 BIG-IP LTM: Virtual Server Performance: Virtual Server Availability (%)
- Events
- Combined Charts:
 - F5 BIG-IP LTM: Virtual Server Performance: Bytes Received from Client Side
 - F5 BIG-IP LTM: Virtual Server Performance: Bytes Sent to Client
- Combined Charts:
 - F5 BIG-IP LTM: Virtual Server Performance: Total Bytes Sent
 - F5 BIG-IP LTM: Virtual Server Performance: Total Bytes Received
- Combined Charts:
 - F5 BIG-IP LTM: Virtual Server Performance: Packets Sent to Client
 - F5 BIG-IP LTM: Virtual Server Performance: Packets Received from Client Side
 - F5 BIG-IP LTM: Virtual Server Performance: Ephemeral Packets Received by Virtual Server
 - F5 BIG-IP LTM: Virtual Server Performance: Ephemeral Packets Transmitted for Virtual Server
- Combined Charts:

- F5 BIG-IP LTM: Virtual Server Performance: Current Connections from Client Side
- F5 BIG-IP LTM: Virtual Server Performance: Connections from Client Side
- F5 BIG-IP LTM: Virtual Server Performance: Ephemeral Bytes Received for Virtual Server



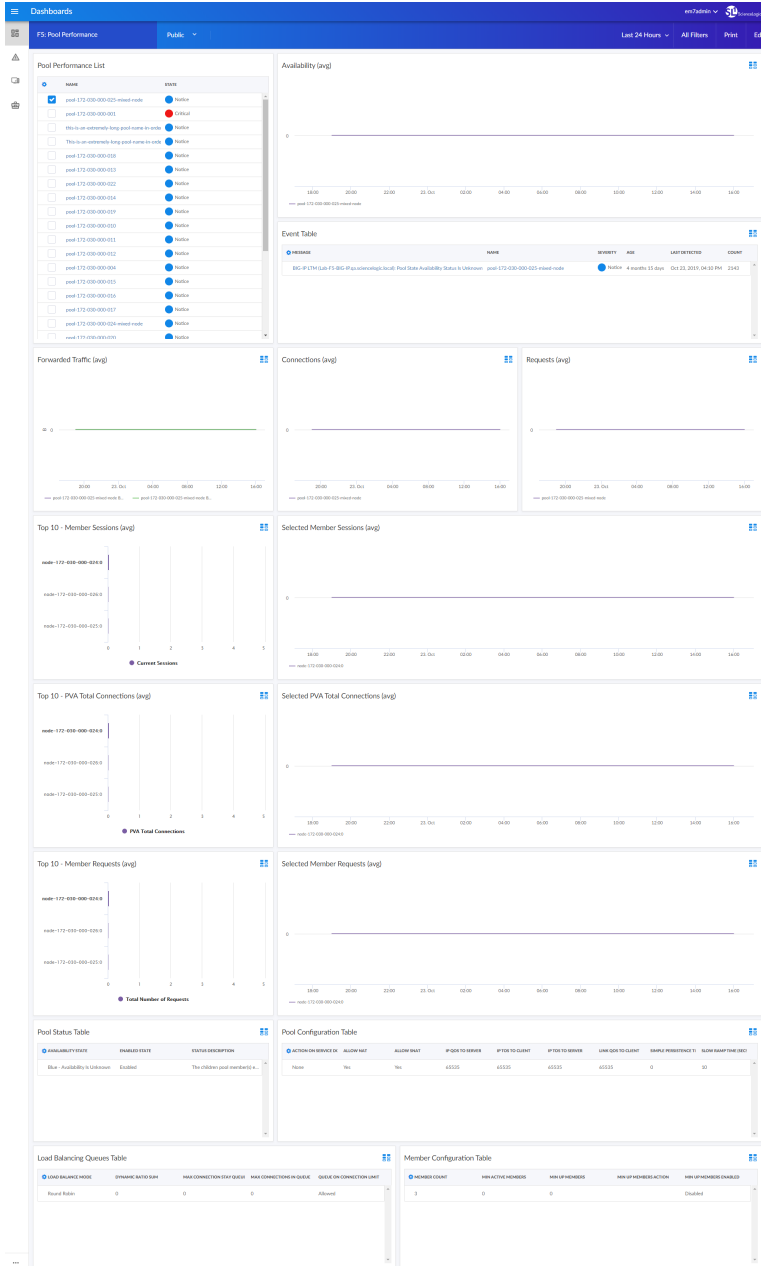
- An "F5 Big-IP" dashboard, which includes the following widgets that display overview data about your F5 Big-IP devices:
 - F5 Big IP Devices
 - LTM Pool Count
 - LTM Pool Member Count
 - LTM Virtual IP Count
 - LTM Virtual Server Count
 - Vitals (avg)
 - Events
 - Storage Usage (avg)

- Forwarded Traffic (avg)
- Memory Usage - TMM and Host (avg)
- CPU Forecast (avg)
- Memory Utilization Forecast (avg)
- Top 10 - Network Usage (avg)
- Selected Network Usage (avg)



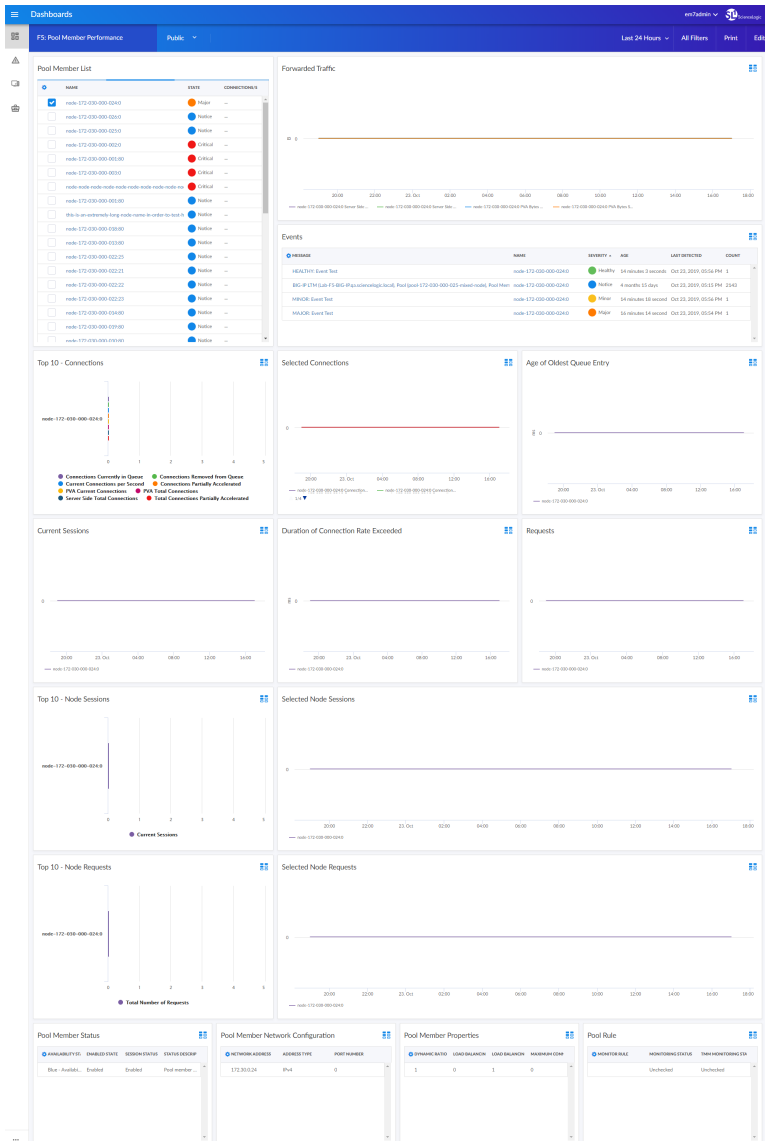
- An "F5: Virtual Server" dashboard, which includes the following widgets that display data about your F5 Big-IP virtual servers:
 - Virtual Server Devices
 - Availability
 - Forwarded Traffic
 - Events
 - Requests
 - Errors
 - Connections

- Virtual Server Status
- Virtual Server Network
- Virtual Server Configuration



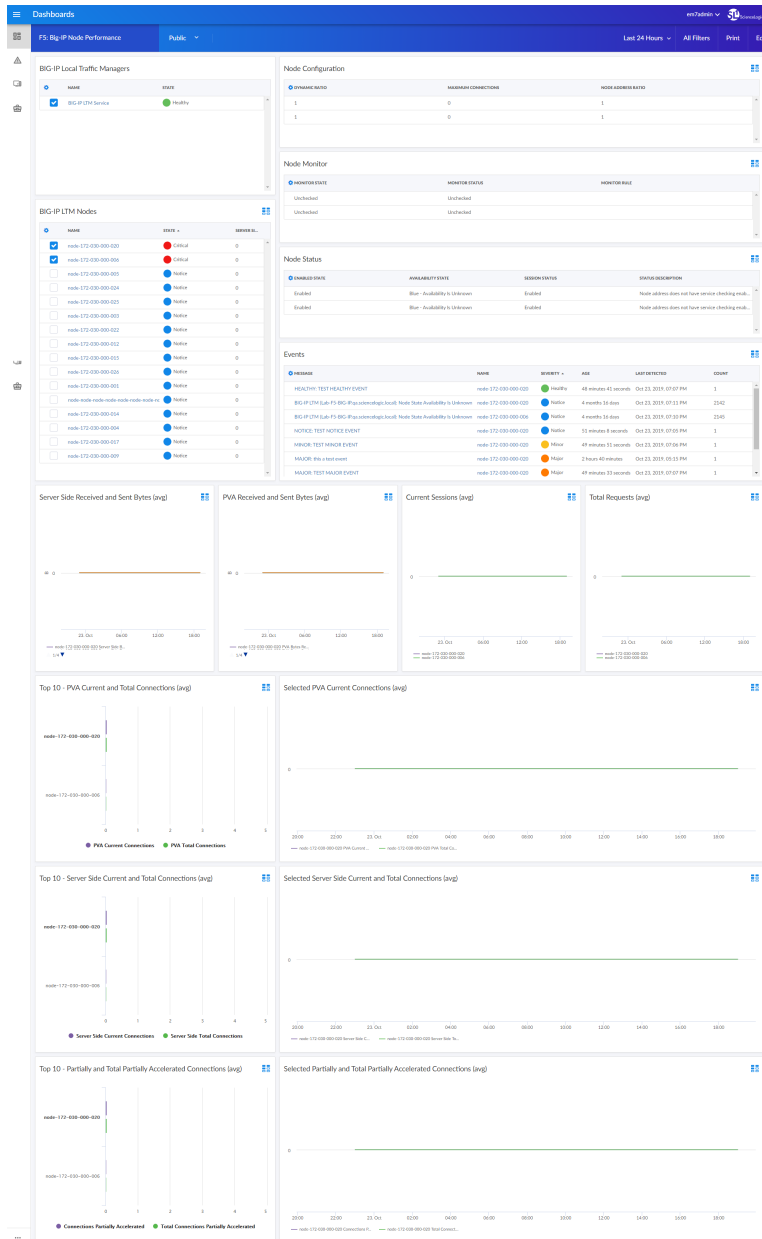
- An "F5: Pool Performance" dashboard, which includes the following widgets that display data about your F5 Big-IP pools:
 - Pool Performance List
 - Availability (avg)

- Event Table
- Forwarded Traffic (avg)
- Connections (avg)
- Requests (avg)
- Top 10 - Member Sessions (avg)
- Selected Member Sessions (avg)
- Top 10 - PVA Total Connections (avg)
- Selected PVA Total Connections (avg)
- Top 10 - Member Requests (avg)
- Selected Member Requests (avg)
- Pool Status Table
- Pool Configuration Table
- Load Balancing Queues Table
- Member Configuration Table



- An "F5: Pool Member Performance" dashboard, which includes the following widgets that display data about your F5 Big-IP pool members:
 - Pool Member List
 - Forwarded Traffic
 - Events
 - Top 10 - Connections
 - Selected Connections
 - Age of Oldest Queue Entry
 - Current Sessions
 - Duration of Connection Rate Exceeded

- Requests
- Top 10 - Node Sessions
- Selected Node Sessions
- Top 10 - Node Requests
- Selected Node Requests
- Pool Member Status
- Pool Member Network Configuration
- Pool Member Properties
- Pool Rule



- An "F5: Big-IP Node Performance" dashboard, which includes the following widgets that display data about your F5 Big-IP nodes:
 - Big-IP Local Traffic Managers
 - Big-IP LTM Nodes
 - Node Configuration
 - Node Monitor
 - Node Status
 - Events

- Server Side Received and Sent Bytes (avg)
- PVA Received and Sent Bytes (avg)
- Current Sessions (avg)
- Total Requests (avg)
- Top 10 - PVA Current and Total Connections (avg)
- Selected PVA Current Connections (avg)
- Top 10 - Server Side Current and Total Connections (avg)
- Selected Server Side Current and Total Connections (avg)
- Top 10 - Partially and Total Partially Accelerated Connections (avg)
- Selected Partially and Total Partially Accelerated Connections (avg)

Enhancements and Issues Addressed

The following enhancements and addressed issues are included in version 105 of the *F5 BIG-IP: SL1 Dashboards PowerPack*:

- The following device investigators were added to the PowerPack:
 - F5 BIG-IP LTM Root Investigator
 - F5 BIG-IP LTM Node Investigator
 - F5 BIG-IP LTM Pool Investigator
 - F5 BIG-IP LTM Pool Member Investigator
 - F5 BIG-IP LTM Virtual Server Investigator

© 2003 - 2021, ScienceLogic, Inc.

All rights reserved.

LIMITATION OF LIABILITY AND GENERAL DISCLAIMER

ALL INFORMATION AVAILABLE IN THIS GUIDE IS PROVIDED "AS IS," WITHOUT WARRANTY OF ANY KIND, EITHER EXPRESS OR IMPLIED. SCIENCELOGIC™ AND ITS SUPPLIERS DISCLAIM ALL WARRANTIES, EXPRESS OR IMPLIED, INCLUDING, BUT NOT LIMITED TO, THE IMPLIED WARRANTIES OF MERCHANTABILITY, FITNESS FOR A PARTICULAR PURPOSE OR NON-INFRINGEMENT.

Although ScienceLogic™ has attempted to provide accurate information on this Site, information on this Site may contain inadvertent technical inaccuracies or typographical errors, and ScienceLogic™ assumes no responsibility for the accuracy of the information. Information may be changed or updated without notice. ScienceLogic™ may also make improvements and / or changes in the products or services described in this Site at any time without notice.

Copyrights and Trademarks

ScienceLogic, the ScienceLogic logo, and EM7 are trademarks of ScienceLogic, Inc. in the United States, other countries, or both.

Below is a list of trademarks and service marks that should be credited to ScienceLogic, Inc. The ® and ™ symbols reflect the trademark registration status in the U.S. Patent and Trademark Office and may not be appropriate for materials to be distributed outside the United States.

- ScienceLogic™
- EM7™ and em7™
- Simplify IT™
- Dynamic Application™
- Relational Infrastructure Management™

The absence of a product or service name, slogan or logo from this list does not constitute a waiver of ScienceLogic's trademark or other intellectual property rights concerning that name, slogan, or logo.

Please note that laws concerning use of trademarks or product names vary by country. Always consult a local attorney for additional guidance.

Other

If any provision of this agreement shall be unlawful, void, or for any reason unenforceable, then that provision shall be deemed severable from this agreement and shall not affect the validity and enforceability of any remaining provisions. This is the entire agreement between the parties relating to the matters contained herein.

In the U.S. and other jurisdictions, trademark owners have a duty to police the use of their marks. Therefore, if you become aware of any improper use of ScienceLogic Trademarks, including infringement or counterfeiting by third parties, report them to Science Logic's legal department immediately. Report as much detail as possible about the misuse, including the name of the party, contact information, and copies or photographs of the potential misuse to: legal@sciencelogic.com



800-SCI-LOGIC (1-800-724-5644)

International: +1-703-354-1010