
Overview

Version 102 of the *Nutanix: SL1 Dashboards PowerPack* includes autoselect for context-driving widgets and the addition of forecast widgets to the "Nutanix: Cluster Summary" dashboard.

NOTE: These dashboards are intended for use only in the new SL1 user interface and will not load in the classic ScienceLogic platform user interface.

- **Minimum Required SL1 Version:** 8.12.1
- **Minimum Required AP2 Version:** 5.125.44
- **Minimum Required Widget Components Version:** 2.175.0
- **Minimum Required NetApp PowerPack Version:** 102
- **Support Status:** Beta

This document describes:

- [Pre-install information](#)
- [The installation process for the PowerPack](#)
- [The features included in version 102](#)
- [The enhancements and issues addressed in version 102](#)

Before You Install

Before installing the *Nutanix: SL1 Dashboards PowerPack* version 102, you must first ensure that you are running version 8.12.1 or later of SL1, AP2 version 5.125.44 or later, and Widget Components version 2.175.0 or later.

NOTE: For details on upgrading SL1, see the appropriate SL1 [Release Notes](#).

You must also import and install the *NetApp PowerPack* version 102 or later before installing the *Nutanix: SL1 Dashboards PowerPack* version 102.

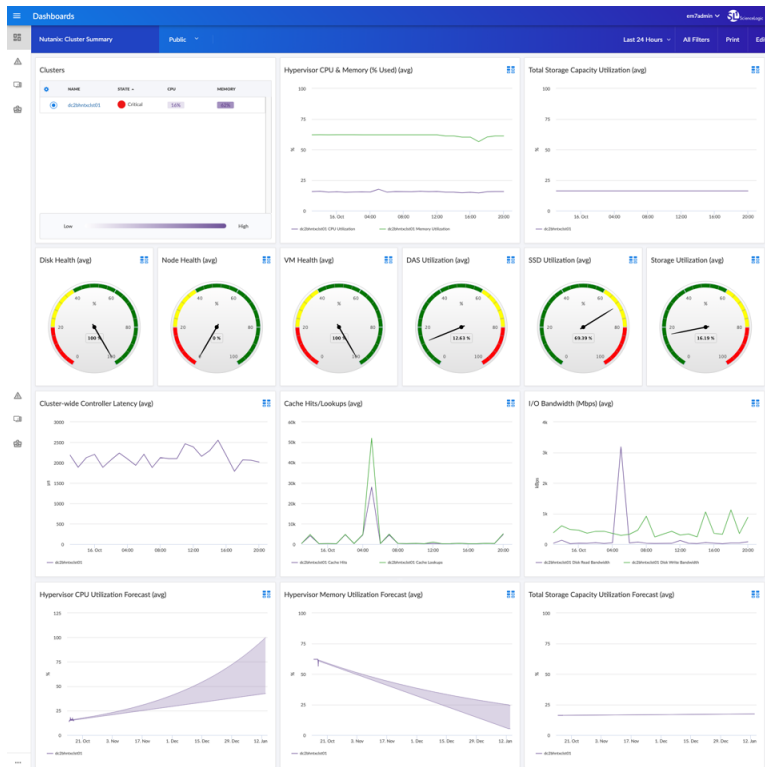
Installation Process

To install version 102 of the *Nutanix: SL1 Dashboards* PowerPack, perform the following steps:

1. If you have not done so already, upgrade your SL1 system to the 8.12.1 or later release.
2. If you have not done so already, install the *NetApp* PowerPack version 102 or greater.
3. Download version 102 of the *Nutanix: SL1 Dashboards* PowerPack from the Customer Portal to a local computer.
4. Go to the **PowerPack Manager** page (System > Manage > PowerPacks). Click the **[Actions]** menu and choose *Import PowerPack*. When prompted, import version 102 of the *Nutanix: SL1 Dashboards* PowerPack.
5. After importing the PowerPack, you will be prompted to install the PowerPack. Click the **[Install]** button to install the PowerPack.

Included Features

The following dashboards are included in version 102 of the *Nutanix: SL1 Dashboards PowerPack*:



- A "Nutanix: Cluster Summary" dashboard, which includes the following widgets that display data about your Nutanix clusters:
 - Clusters
 - Hypervisor CPU & Memory (% Used) (avg)
 - Total Storage Capacity Utilization (avg)
 - Disk Health (avg)
 - Node Health (avg)
 - VM Health (avg)
 - DAS Utilization (avg)
 - SSD Utilization (avg)
 - Storage Utilization (avg)
 - Cluster-wide Controller Latency (avg)
 - Cache Hits/Lookups (avg)
 - I/O Bandwidth (Mbps) (avg)

- Hypervisor CPU Utilization Forecast (avg)
- Hypervisor Memory Utilization Forecast (avg)
- Total Storage Capacity Utilization Forecast (avg)

Enhancements and Issues Addressed

The following enhancements and addressed issues are included in version 102 of the *Nutanix: SL1 Dashboards PowerPack*:

- Autoselect for context-driving widgets has been enabled in all dashboards.
- The Hypervisor CPU Utilization Forecast (avg), Hypervisor Memory Utilization Forecast (avg), and Total Storage Capacity Utilization Forecast (avg) widgets were added to the "Nutanix: Cluster Summary" dashboard.